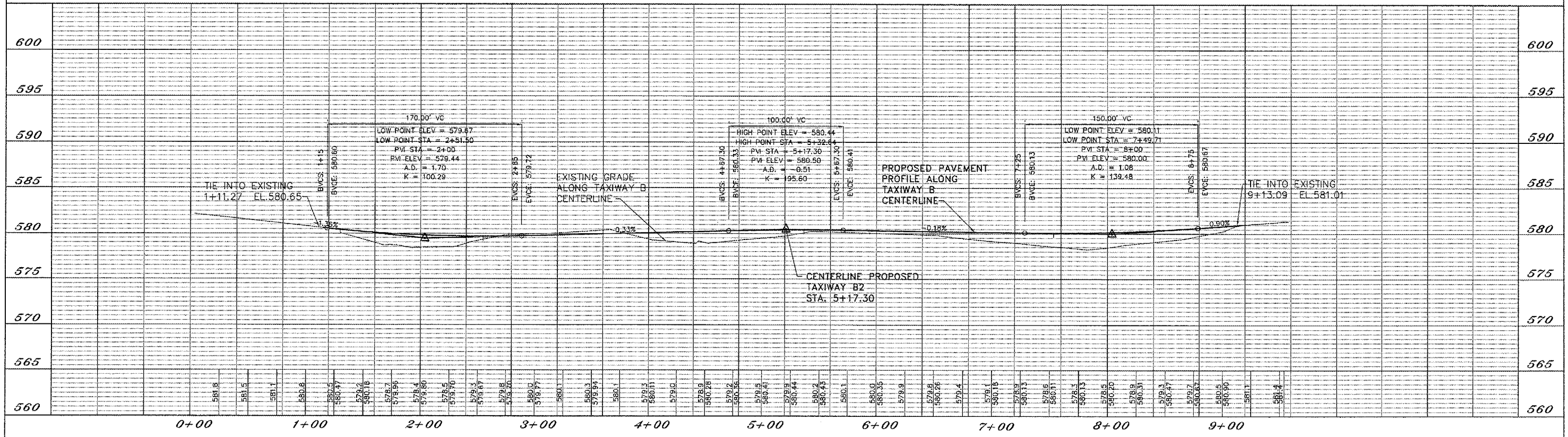
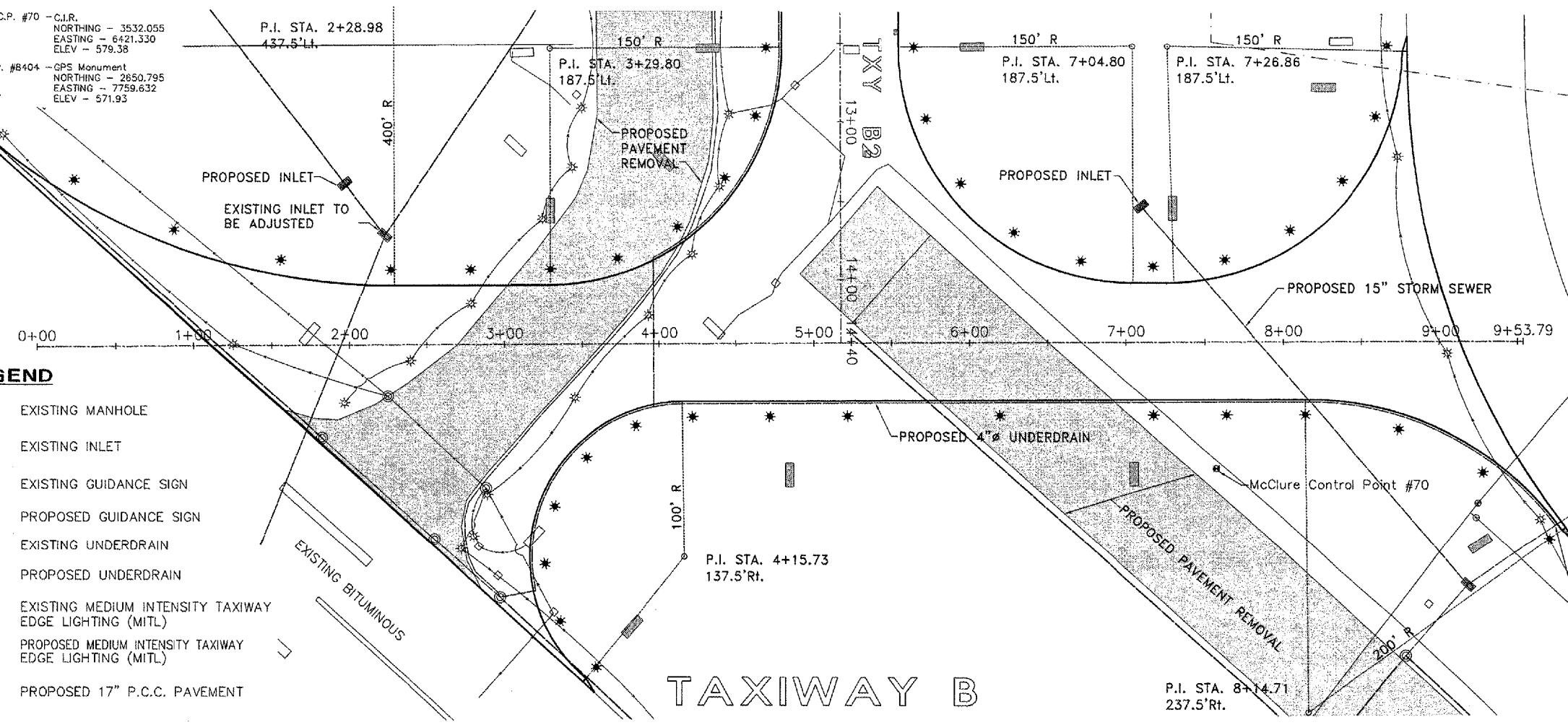


MCCLURE CONTROL POINTS:
 C.P. #10 - C.I.R. - NORTHING - 4689.611, EASTING - 6747.730, ELEV - 591.90
 C.P. #22 - C.I.R. - NORTHING - 4747.271, EASTING - 7846.487, ELEV - 585.92
 C.P. #70 - C.I.R. - NORTHING - 3532.055, EASTING - 6421.330, ELEV - 579.38
 C.P. #8404 - GPS Monument - NORTHING - 2650.795, EASTING - 7759.632, ELEV - 571.93

LEGEND

- EXISTING MANHOLE
- EXISTING INLET
- EXISTING GUIDANCE SIGN
- PROPOSED GUIDANCE SIGN
- EXISTING UNDERDRAIN
- PROPOSED UNDERDRAIN
- EXISTING MEDIUM INTENSITY TAXIWAY EDGE LIGHTING (MITL)
- PROPOSED MEDIUM INTENSITY TAXIWAY EDGE LIGHTING (MITL)
- PROPOSED 17" P.C.C. PAVEMENT



QUAD CITY INTERNATIONAL AIRPORT
 Moline, IL



REVISIONS		
NO.	ITEM	DATE

PLOTTING SCALE: 1:40
 DRAWN BY: MJK
 CHECKED BY:
 DATE: MAY 2005

McCLURE ENGINEERING ASSOCIATES, INC.
 4700 Kennedy Drive, East Moline, Illinois 61834
 (309) 792-5350, FAX (309) 792-5814
 Design Firm License: Illinois #184-000816
 Copyright 2005 by McClure Engineering Associates, Inc.

PLAN & PROFILE TAXIWAY B
 STA. 0+00 - STA. 9+53.79
 QUAD CITY INTERNATIONAL AIRPORT
 RECONSTRUCT TAXIWAYS B and B2
 MOLINE, ILLINOIS
 FILE NAME: T:\M0105.065\DWG\05065MOL.DWG
 JOB NUMBER: 01-29-05-065