

MCCLURE CONTROL POINTS:




C.P. #10 - C.I.R.
NORTHING - 4699.611
EASTING - 6747.730
ELEV - 591.90

C.P. #22 - C.I.R.
NORTHING - 4747.271
EASTING - 7846.487
ELEV - 585.92

C.P. #70 - C.I.R.
NORTHING - 3532.055
EASTING - 6421.330
ELEV - 579.38

C.P. #8404 - GPS Monument
NORTHING - 2650.795
EASTING - 7759.632
ELEV - 571.93

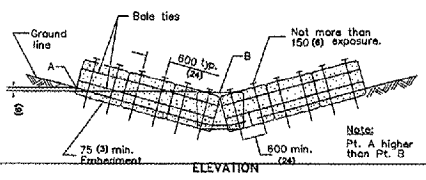
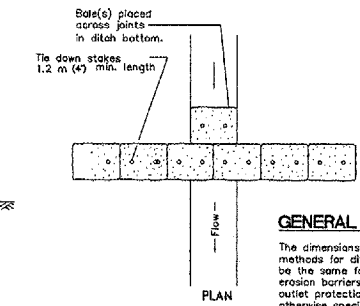
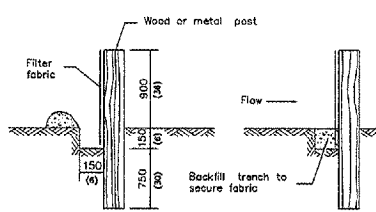
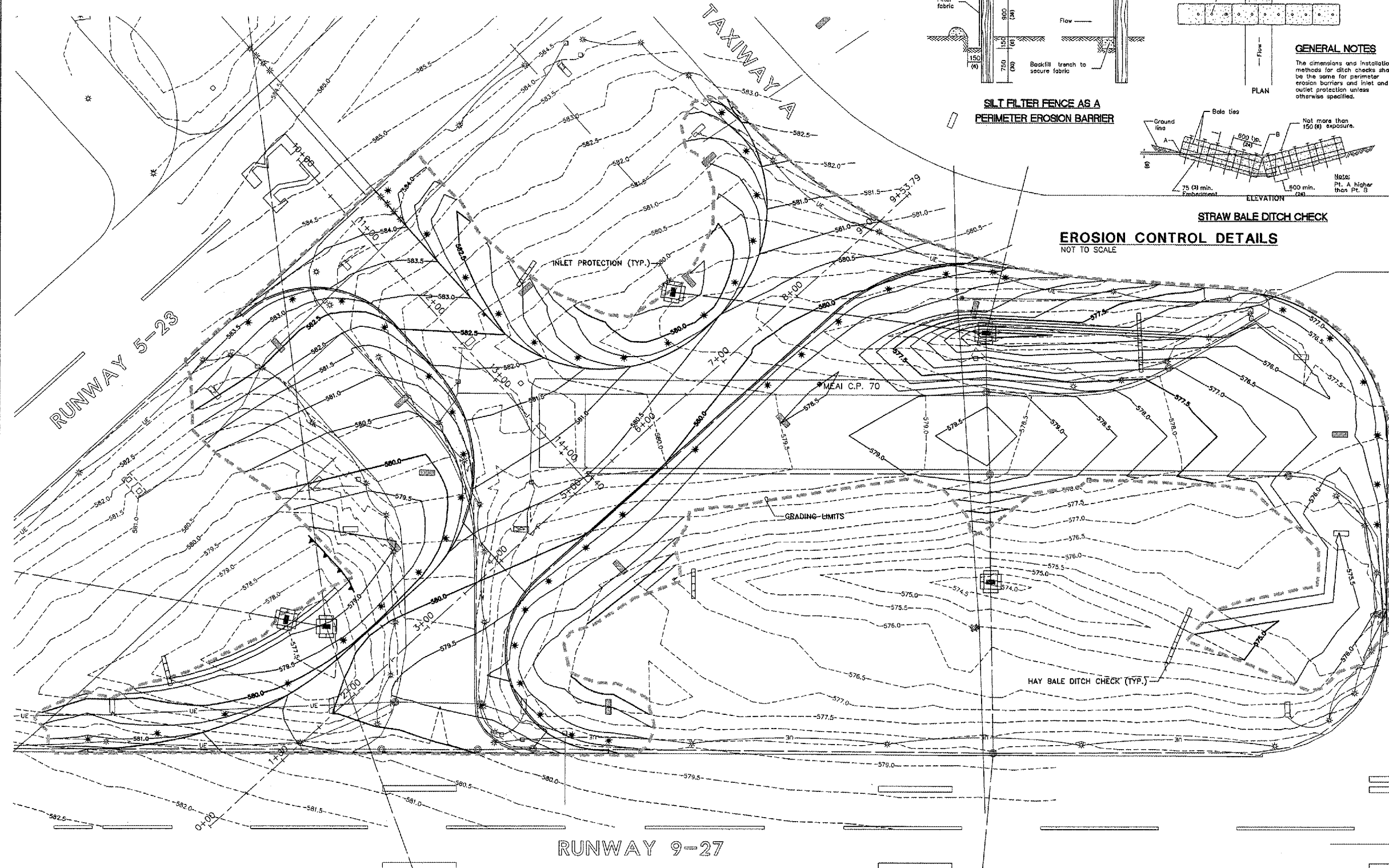
LEGEND

-  GRADING LIMITS AND SEEDING LIMITS FOR PAYMENT
-  PROPOSED SILT FENCE
-  PROPOSED HAY BALE INLET PROTECTION

QU094



Scale in Feet
0 50 100



GENERAL NOTES
The dimensions and installation methods for ditch checks shall be the same for perimeter erosion barriers and inlet and outlet protection unless otherwise specified.

EROSION CONTROL DETAILS
NOT TO SCALE

EROSION CONTROL NOTES

- 1.) DITCH CHECKS - TWO BALES HIGH SHALL BE REQUIRED PER I.D.O.T. STANDARD 2381 - TEMPORARY EROSION CONTROL SYSTEM DRAWING. THE CONTRACTOR SHALL BE RESPONSIBLE FOR INSTALLING, MAINTAINING AND REMOVING DITCH CHECKS TO THE SATISFACTION OF THE RESIDENT ENGINEER. THIS INCLUDES BUT IS NOT LIMITED TO CLEANING EROSION SOILS AS REQUIRED.
- 2.) LOCATION OF THE DITCH CHECKS SHOWN ARE APPROXIMATE. ACTUAL LOCATIONS TO BE DETERMINED AT THE TIME OF CONSTRUCTION.
- 3.) ONCE CONSTRUCTION HAS BEEN COMPLETED, THE CONTRACTOR SHALL SEED ALL AREAS DISTURBED IN ACCORDANCE WITH ITEM AR901510 WITHIN 14 DAYS OF LAST DISTURBANCE. DITCH CHECKS SHALL REMAIN IN PLACE AND BE MAINTAINED UNTIL THE CONTRACTOR ESTABLISHES A GOOD STAND OF GRASS OF UNIFORM COLOR AND DENSITY TO THE SATISFACTION OF THE RESIDENT ENGINEER.
- 4.) THE COST OF ALL MEASURES NECESSARY TO COMPLY WITH THE EROSION CONTROL PLAN SHALL BE INCLUDED IN THE TEMPORARY EROSION CONTROL LUMP SUM PRICE. SEEDING SHALL BE PAID UNDER ITEM AR901510.
- 5.) ALL AREAS DISTURBED OUTSIDE OF THE GRADING LIMITS SHALL BE RESTORED TO ORIGINAL CONDITION AT THE EXPENSE OF THE CONTRACTOR.
- 6.) THE CONTRACTOR AND THE SUBCONTRACTORS RESPONSIBLE FOR WATER POLLUTION CONTROL SHALL DESIGNATE, PRIOR TO CONSTRUCTION, A PERSON OR PERSONS WHO CAN BE CONTACTED IN AN EMERGENCY INVOLVING THEIR WATER POLLUTION CONTROL ITEMS. THESE DESIGNATED PEOPLE SHALL BE AVAILABLE TO REPAIR AND MAINTAIN THE WATER POLLUTION CONTROL DEVICES ON A 24 HOUR PER DAY BASIS.

GRADING NOTES

- 1.) TOPSOIL TO BE STRIPPED TO A MINIMUM DEPTH OF 6" AND STOCKPILED PRIOR TO GRADING OPERATIONS. TOPSOIL SHALL BE RESPREAD UPON COMPLETION OF GRADING OPERATIONS.
- 2.) THE EXPOSED SUBGRADE SHALL BE PROOF-ROLLED THOROUGHLY TO DETECT ANY UNSUITABLE AREAS. AT THE DIRECTION OF THE ENGINEER, THESE REGIONS SHALL BE STABILIZED TO MEET DENSITY REQUIREMENTS BY CORING OUT AND REPLACING WITH STABILIZATION ROCK OR OTHER METHOD ACCEPTABLE TO THE ENGINEER.
- 3.) ALL DEBRIS RESULTING FROM CONSTRUCTION OPERATIONS SHALL BE PROPERLY DISPOSED OF OFF SITE.
- 4.) SUITABLE EXCESS EXCAVATED MATERIAL SHALL BE DISPOSED OF ON AIRPORT PROPERTY (WITHIN THREE MILES) AS DIRECTED BY THE ENGINEER.

EARTHWORK VOLUMES

CUT 9,037 CY
FILL 5,270 CY

NOTES:
1.) VOLUMES CALCULATED ARE TO SUBGRADE AND ARE UNADJUSTED.

NOTE: CONTOURS ARE AT 0.5' INCREMENTS

QUAD CITY INTERNATIONAL AIRPORT
Moline, IL



REVISIONS		
NO.	ITEM	DATE

PLOTTING SCALE: 1:50
DRAWN BY: MKK
CHECKED BY:
DATE: MAY 2005

McCLURE ENGINEERING ASSOCIATES, INC.
4700 Kennedy Drive
(309) 792-8360
Econ. Moline, Illinois 61224
FAX (309) 792-8874
Design Firm License: Illinois #184-000816
Copyright 2005 by McClure Engineering Associates, Inc.

GRADING & EROSION CONTROL PLAN
QUAD CITY INTERNATIONAL AIRPORT
RECONSTRUCT TAXIWAYS B and B2
MOLINE, ILLINOIS
FILE NAME: T:\M0105.065\DWG\05065MDL.DWG
JOB NUMBER: 01-25-05-065

SHEET NO.
6
OF 28