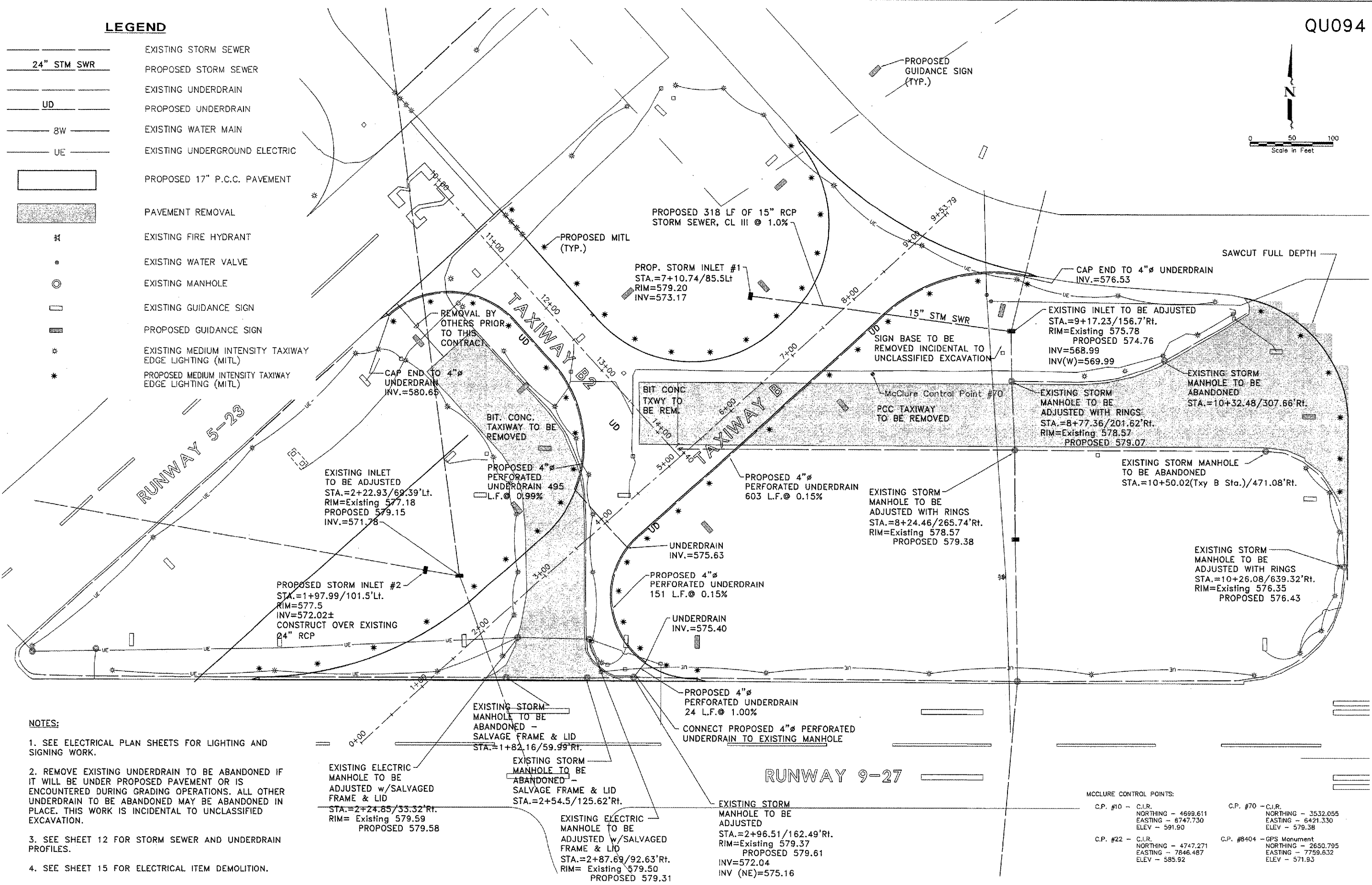


LEGEND

- 24" STM SWR
- PROPOSED STORM SEWER
- EXISTING UNDERDRAIN
- UD
- 8W
- EXISTING WATER MAIN
- UE
- EXISTING UNDERGROUND ELECTRIC
- PROPOSED 17" P.C.C. PAVEMENT
- PAVEMENT REMOVAL
- EXISTING FIRE HYDRANT
- EXISTING WATER VALVE
- EXISTING MANHOLE
- EXISTING GUIDANCE SIGN
- PROPOSED GUIDANCE SIGN
- EXISTING MEDIUM INTENSITY TAXIWAY EDGE LIGHTING (MITL)
- PROPOSED MEDIUM INTENSITY TAXIWAY EDGE LIGHTING (MITL)



NOTES:

1. SEE ELECTRICAL PLAN SHEETS FOR LIGHTING AND SIGNING WORK.
2. REMOVE EXISTING UNDERDRAIN TO BE ABANDONED IF IT WILL BE UNDER PROPOSED PAVEMENT OR IS ENCOUNTERED DURING GRADING OPERATIONS. ALL OTHER UNDERDRAIN TO BE ABANDONED MAY BE ABANDONED IN PLACE. THIS WORK IS INCIDENTAL TO UNCLASSIFIED EXCAVATION.
3. SEE SHEET 12 FOR STORM SEWER AND UNDERDRAIN PROFILES.
4. SEE SHEET 15 FOR ELECTRICAL ITEM DEMOLITION.

MCCLURE CONTROL POINTS:

C.P. #10 - C.I.R.	NORTHING - 4699.611 EASTING - 6747.730 ELEV - 591.90	C.P. #70 - C.I.R.	NORTHING - 3532.055 EASTING - 6421.330 ELEV - 579.38
C.P. #22 - C.I.R.	NORTHING - 4747.271 EASTING - 7846.487 ELEV - 585.92	C.P. #8404 - GPS Monument	NORTHING - 2650.795 EASTING - 7759.632 ELEV - 571.93



REVISIONS		
NO.	ITEM	DATE

PLOTTING SCALE:	1:50
DRAWN BY:	MAK
CHECKED BY:	
DATE:	MAY 2005

McCLURE ENGINEERING ASSOCIATES, INC.
 4700 Kennedy Drive
 (309) 792-3353
 East Moline, Illinois 61244
 FAX (309) 792-9974
 Design Firm License: Illinois #184-000818
 Copyright 2005 by McClure Engineering Associates, Inc.