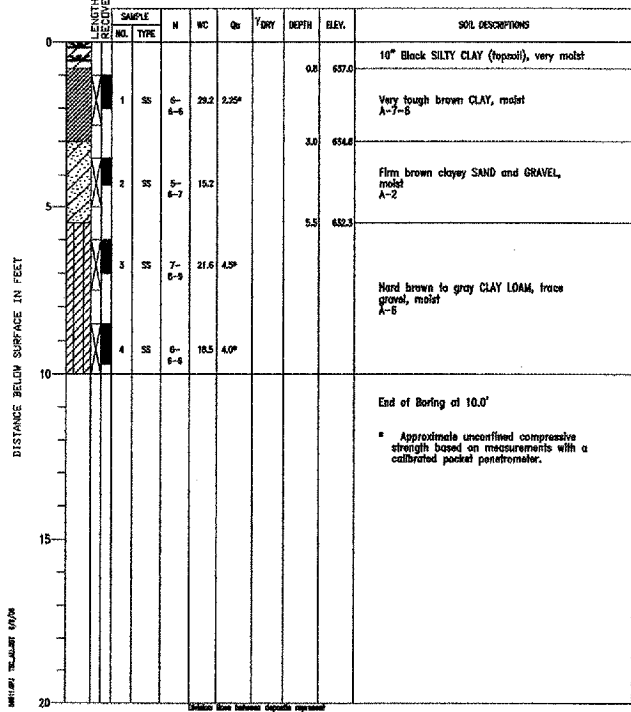
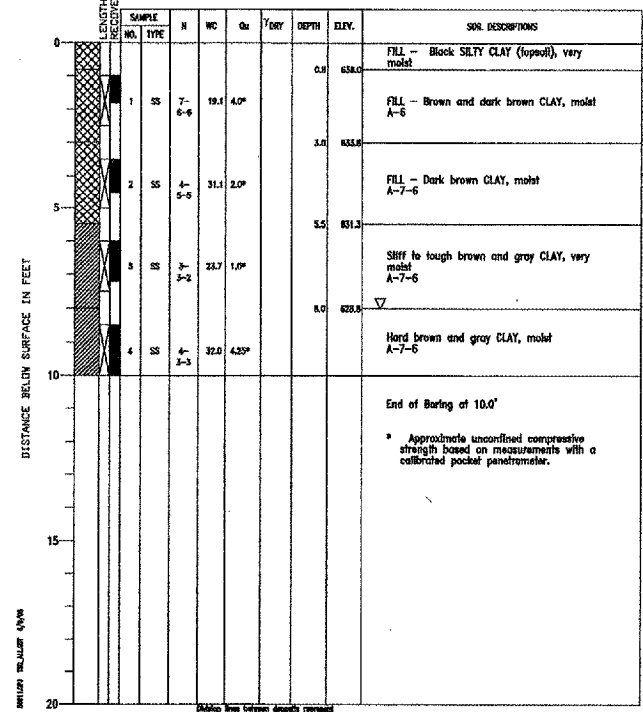


K:\Palwaukee\p\0329002\draw\steeb\FILE: eng-info2.dwg
 LAYOUT: Layout1
 UPDATE BY: johse
 SURVEY BOOK #
 DATE: Wed 6/29/05 1:55pm
 XREF DWG: hgr-Base.dwg
 tbcint.dwg

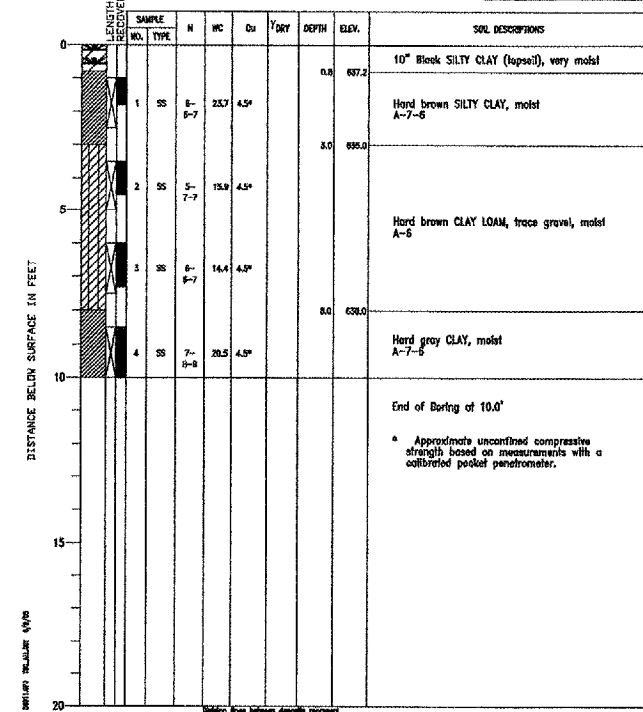
PROJECT Palwaukee Municipal Airport Perimeter Roads, Wheeling, Illinois
 CLIENT Crawford, Murphy & Tilly, Inc., Aurora, Illinois
 BORING 7 DATE STARTED 1-23-03 DATE COMPLETED 1-23-03 JOB L-56,911
 ELEVATIONS GROUND SURFACE 637.8 WATER LEVEL OBSERVATIONS Dry
 END OF BORING 627.8 AT END OF BORING Dry
 24 HOURS



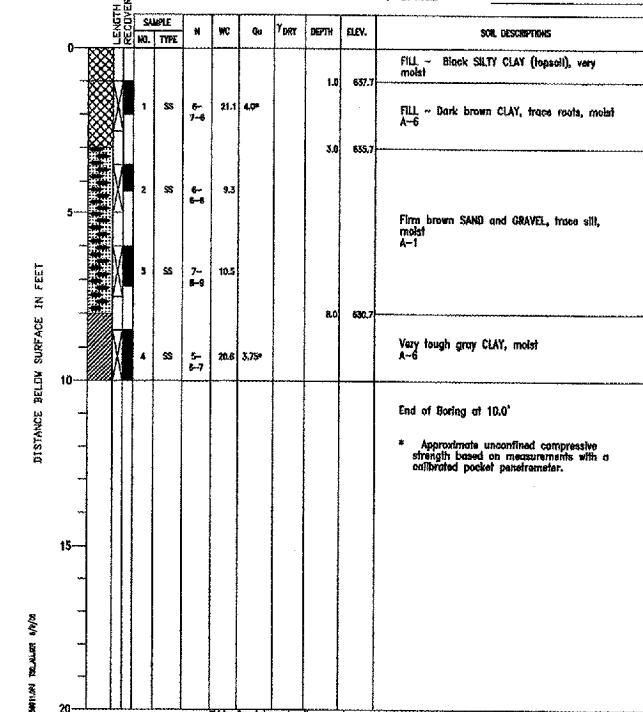
PROJECT Palwaukee Municipal Airport Perimeter Roads, Wheeling, Illinois
 CLIENT Crawford, Murphy & Tilly, Inc., Aurora, Illinois
 BORING 8 DATE STARTED 1-24-03 DATE COMPLETED 1-24-03 JOB L-56,911
 ELEVATIONS GROUND SURFACE 636.8 WATER LEVEL OBSERVATIONS 8.0'
 END OF BORING 626.8 AT END OF BORING 8.0'
 24 HOURS



PROJECT Palwaukee Municipal Airport Perimeter Roads, Wheeling, Illinois
 CLIENT Crawford, Murphy & Tilly, Inc., Aurora, Illinois
 BORING 9 DATE STARTED 1-23-03 DATE COMPLETED 1-23-03 JOB L-56,911
 ELEVATIONS GROUND SURFACE 636.0 WATER LEVEL OBSERVATIONS Dry
 END OF BORING 626.0 AT END OF BORING Dry
 24 HOURS

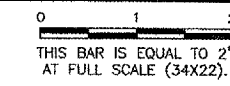


PROJECT Palwaukee Municipal Airport Perimeter Roads, Wheeling, Illinois
 CLIENT Crawford, Murphy & Tilly, Inc., Aurora, Illinois
 BORING 10 DATE STARTED 1-23-03 DATE COMPLETED 1-23-03 JOB L-56,911
 ELEVATIONS GROUND SURFACE 638.7 WATER LEVEL OBSERVATIONS Dry
 END OF BORING 628.7 AT END OF BORING Dry
 24 HOURS

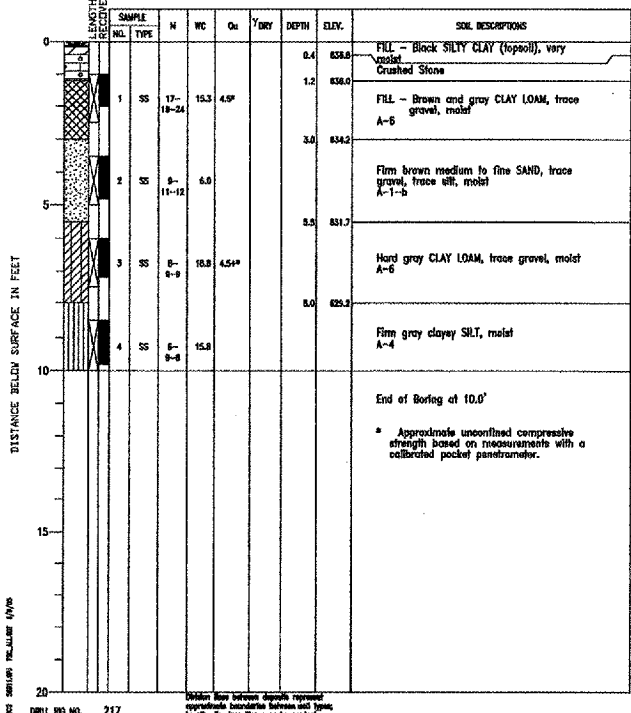


REVISIONS

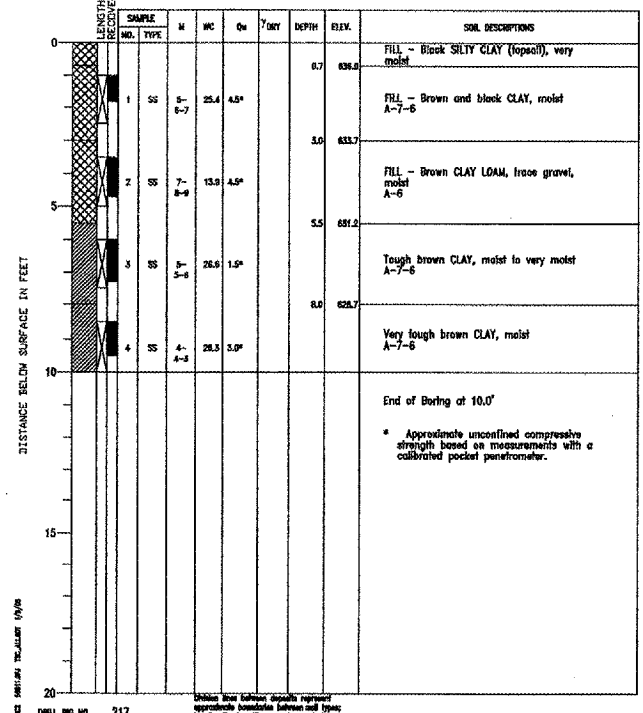
NUMBER	BY	DATE



PROJECT Palwaukee Municipal Airport Perimeter Roads, Wheeling, Illinois
 CLIENT Crawford, Murphy & Tilly, Inc., Aurora, Illinois
 BORING 11 DATE STARTED 1-24-03 DATE COMPLETED 1-24-03 JOB L-56,911
 ELEVATIONS GROUND SURFACE 637.2 WATER LEVEL OBSERVATIONS Dry
 END OF BORING 627.2 AT END OF BORING Dry
 24 HOURS

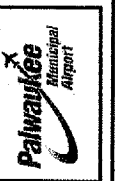


PROJECT Palwaukee Municipal Airport Perimeter Roads, Wheeling, Illinois
 CLIENT Crawford, Murphy & Tilly, Inc., Aurora, Illinois
 BORING 12 DATE STARTED 1-23-03 DATE COMPLETED 1-23-03 JOB L-56,911
 ELEVATIONS GROUND SURFACE 636.7 WATER LEVEL OBSERVATIONS Dry
 END OF BORING 626.7 AT END OF BORING Dry
 24 HOURS



PALWUKEE MUNICIPAL AIRPORT
 WHEELING / PROSPECT HEIGHTS ILLINOIS
 NORTHWEST QUADRANT SITEWORK
 ENGINEERING INFORMATION
 EAST QUADRANT SHEET 2

© Copyright CMT, Inc.
CMT
 CRAWFORD, MURPHY & TILLY, INC.
 CONSULTING ENGINEERS
 License No. 184-000513



DESIGN BY: MLK
 DRAWN BY: JRO
 CHECKED BY:
 APPROVED BY:
 DATE: 06/28/05
 JOB No: 03290-02

ILLINOIS PROJECT: PWK-3471