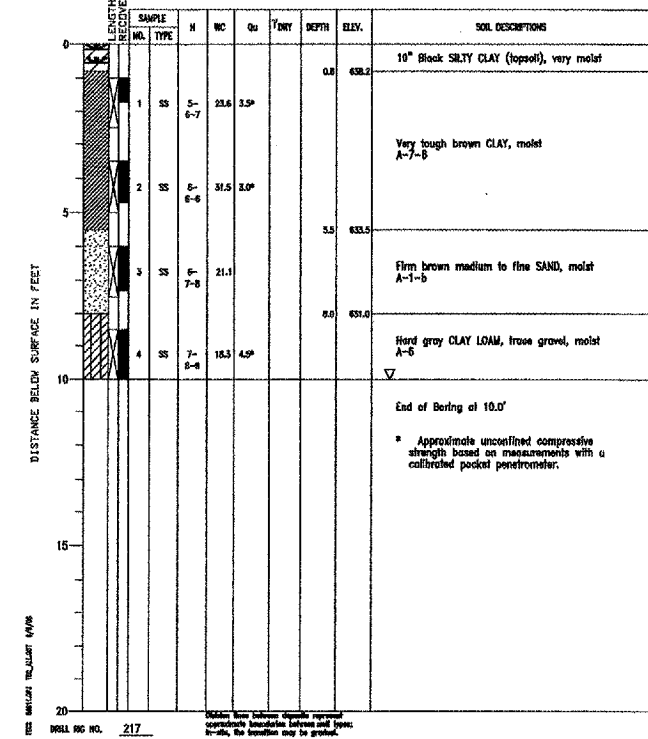
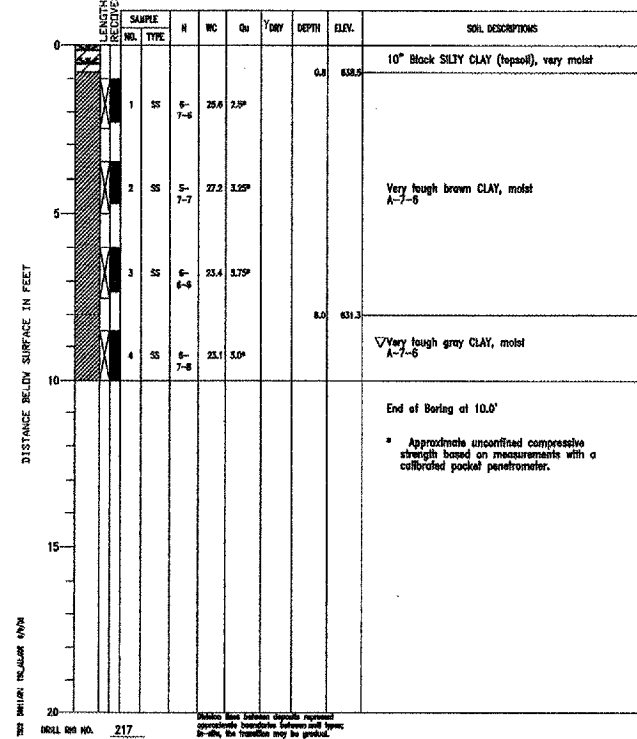


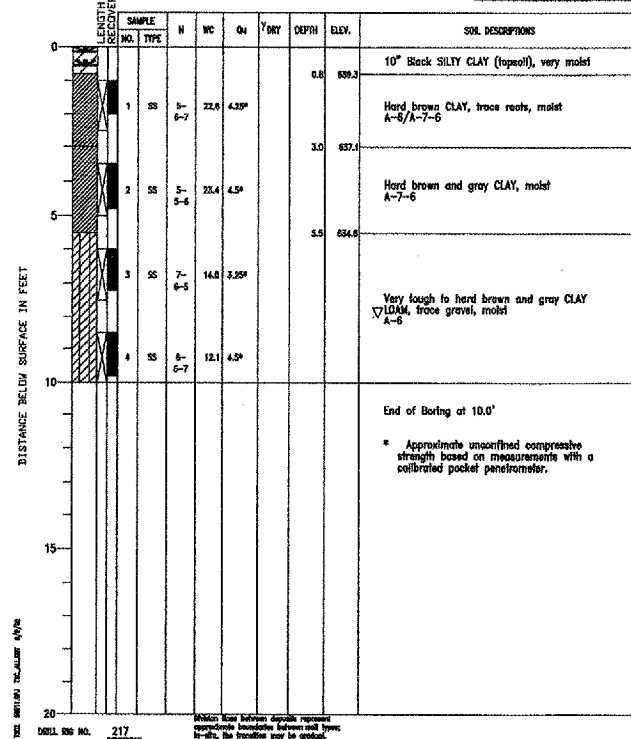
PROJECT Palwaukee Municipal Airport Perimeter Roads, Wheeling, Illinois  
 CLIENT Crawford, Murphy & Tilly, Inc., Aurora, Illinois  
 BORING 1 DATE STARTED 1-23-03 DATE COMPLETED 1-23-03 JOB L-56,911  
 ELEVATIONS GROUND SURFACE 639.0 WATER LEVEL OBSERVATIONS 10.0'  
 END OF BORING 629.0 AT END OF BORING 10.0'  
 WHILE DRILLING AT END OF BORING 24 HOURS



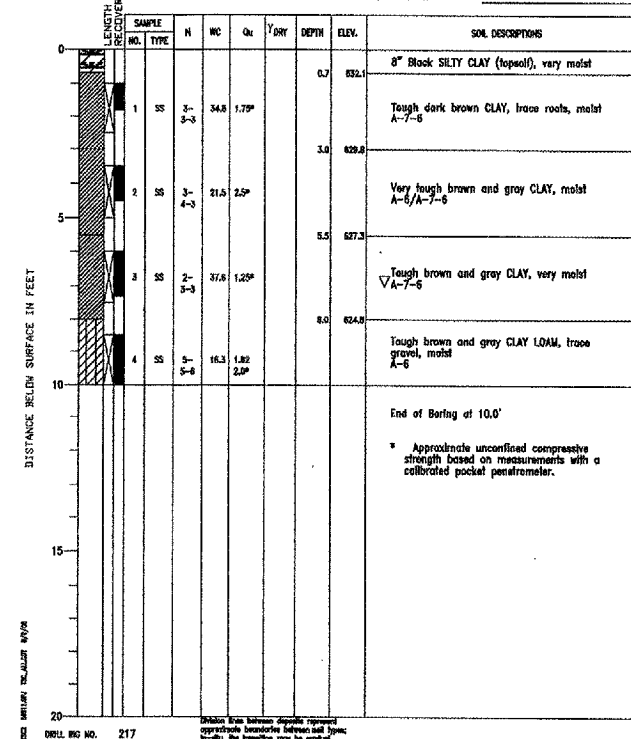
PROJECT Palwaukee Municipal Airport Perimeter Roads, Wheeling, Illinois  
 CLIENT Crawford, Murphy & Tilly, Inc., Aurora, Illinois  
 BORING 2 DATE STARTED 1-23-03 DATE COMPLETED 1-23-03 JOB L-56,911  
 ELEVATIONS GROUND SURFACE 639.3 WATER LEVEL OBSERVATIONS 8.0'  
 END OF BORING 629.3 AT END OF BORING 10.0'  
 WHILE DRILLING AT END OF BORING 24 HOURS



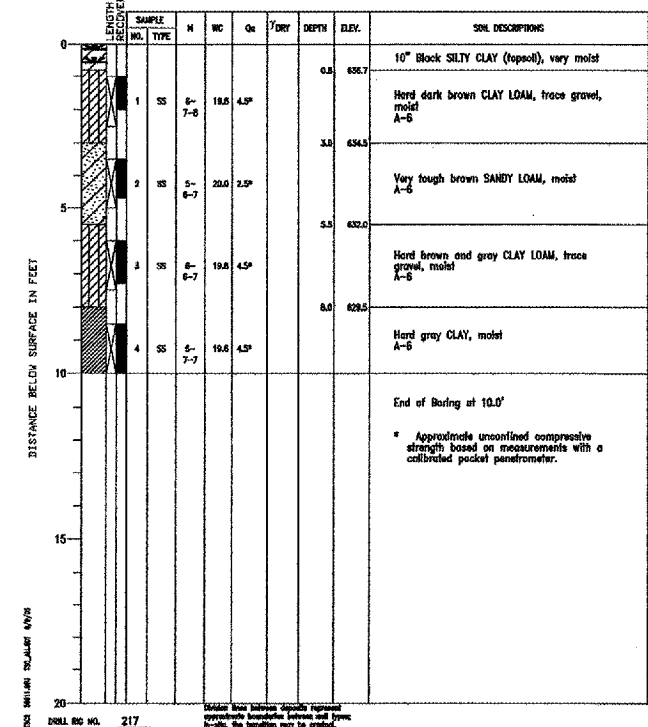
PROJECT Palwaukee Municipal Airport Perimeter Roads, Wheeling, Illinois  
 CLIENT Crawford, Murphy & Tilly, Inc., Aurora, Illinois  
 BORING 3 DATE STARTED 1-23-03 DATE COMPLETED 1-23-03 JOB L-56,911  
 ELEVATIONS GROUND SURFACE 640.1 WATER LEVEL OBSERVATIONS 8.0'  
 END OF BORING 630.1 AT END OF BORING 10.0'  
 WHILE DRILLING AT END OF BORING 24 HOURS



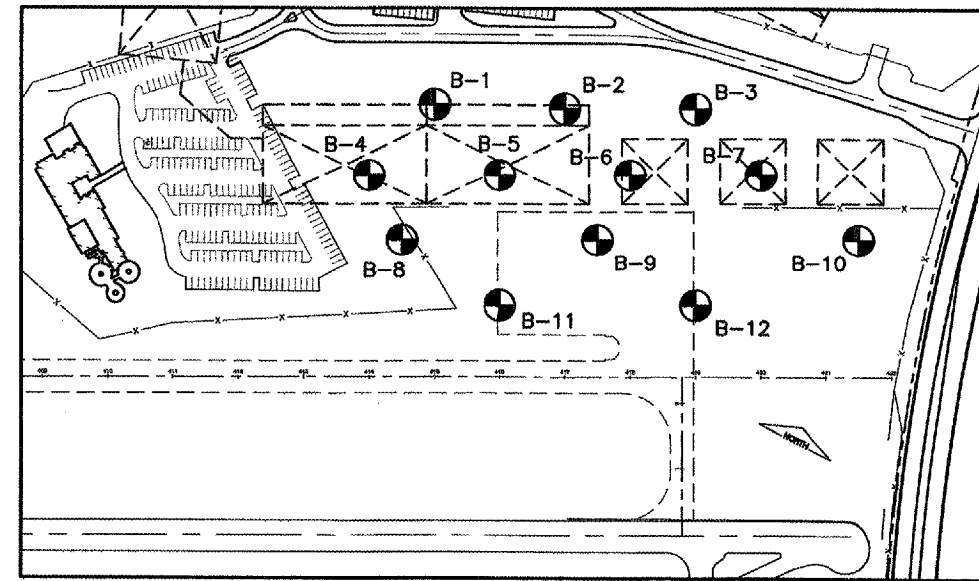
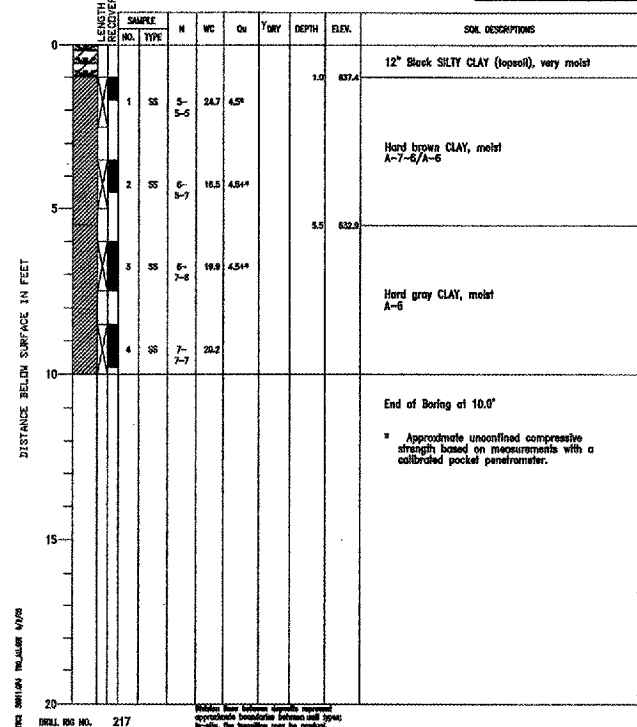
PROJECT Palwaukee Municipal Airport Perimeter Roads, Wheeling, Illinois  
 CLIENT Crawford, Murphy & Tilly, Inc., Aurora, Illinois  
 BORING 4 DATE STARTED 1-23-03 DATE COMPLETED 1-23-03 JOB L-56,911  
 ELEVATIONS GROUND SURFACE 632.8 WATER LEVEL OBSERVATIONS 8.0'  
 END OF BORING 622.8 AT END OF BORING 10.0'  
 WHILE DRILLING AT END OF BORING 24 HOURS



PROJECT Palwaukee Municipal Airport Perimeter Roads, Wheeling, Illinois  
 CLIENT Crawford, Murphy & Tilly, Inc., Aurora, Illinois  
 BORING 5 DATE STARTED 1-23-03 DATE COMPLETED 1-23-03 JOB L-56,911  
 ELEVATIONS GROUND SURFACE 637.5 WATER LEVEL OBSERVATIONS DRY  
 END OF BORING 627.5 AT END OF BORING DRY  
 WHILE DRILLING AT END OF BORING 24 HOURS



PROJECT Palwaukee Municipal Airport Perimeter Roads, Wheeling, Illinois  
 CLIENT Crawford, Murphy & Tilly, Inc., Aurora, Illinois  
 BORING 6 DATE STARTED 1-23-03 DATE COMPLETED 1-23-03 JOB L-56,911  
 ELEVATIONS GROUND SURFACE 638.4 WATER LEVEL OBSERVATIONS DRY  
 END OF BORING 628.4 AT END OF BORING DRY  
 WHILE DRILLING AT END OF BORING 24 HOURS



KEY MAP  
 GEOTECHNICAL LAYOUT TABLE

BORING	RWY 6/24 STA	OFFSET	RWY 6/24	DEPTH	NORTHING	EASTING
B1	215+00	650'	10'	10'	1985047.40	618271.35
B2	217+00	650'	10'	10'	1985138.09	618449.61
B3	219+00	650'	10'	10'	1985228.79	618627.86
B4	214+00	550'	10'	10'	1984912.93	618227.57
B5	216+00	550'	10'	10'	1985003.62	618405.83
B6	218+00	550'	10'	10'	1985094.32	618584.08
B7	220+00	550'	10'	10'	1985185.01	618762.33
B8	214+50	450'	10'	10'	1984846.47	618317.48
B9	217+50	450'	10'	10'	1984982.51	618584.86
B10	221+00	450'	10'	10'	1985163.90	618941.37
B11	216+00	350'	10'	10'	1984825.36	618496.52
B12	219+00	350'	10'	10'	1984961.41	618763.90

REVISIONS

NUMBER	BY	DATE

0 1 2  
 THIS BAR IS EQUAL TO 2" AT FULL SCALE (34X22).

PALWAKEE MUNICIPAL AIRPORT  
 WHEELING / PROSPECT HEIGHTS ILLINOIS  
 NORTH EAST QUADRANT SITEWORK  
 ENGINEERING INFORMATION  
 EAST QUADRANT SHEET 1

© Copyright CMT, Inc.  
 CMT CRAWFORD, MURPHY & TILLY, INC.  
 CONSULTING ENGINEERS  
 License No. 184-000613

DESIGN BY: MLK  
 DRAWN BY: JRO  
 CHECKED BY:  
 APPROVED BY:  
 DATE: 06/28/05  
 JOB No: 03290-02  
 ILLINOIS PROJECT: PWK-3471