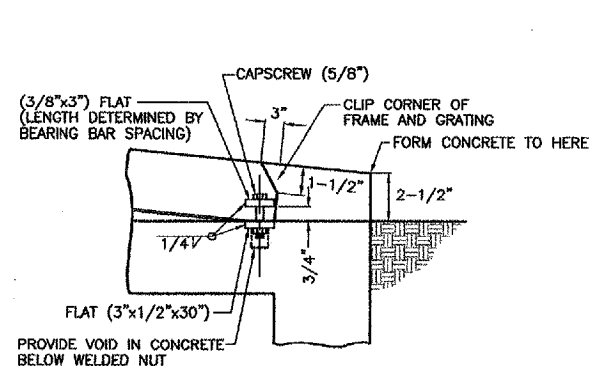
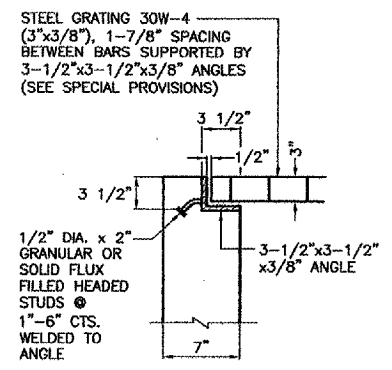


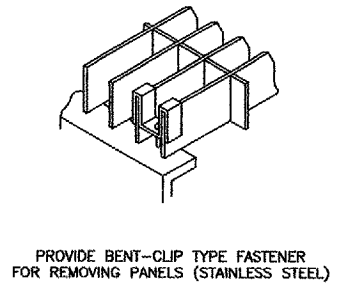
PATH: K:\0329005\draw\sheet\ FILE: sbox.dwg  
 UPDATE BY: johse  
 SURVEY BOOK #  
 XREF DWG:  
 XREF DWG:  
 DATE: Fri 5/21/04 1:57pm



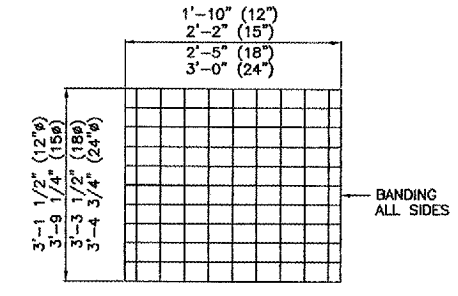
**DETAIL A**  
NO SCALE



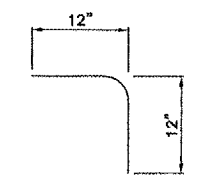
**SECTION-B**  
NO SCALE



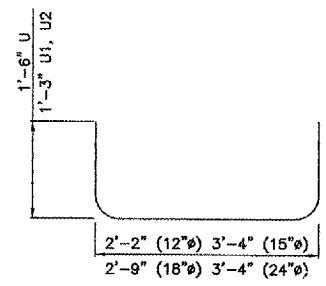
**SADDLE CLIP**  
NO SCALE



**GRATING DETAILS - PLAN VIEW**  
NO SCALE  
 ONE SECTION OF GRATING DETAILED.  
 TOTAL OF 3 SECTIONS REQUIRED FOR 12" & 15".  
 TOTAL OF 4 SECTIONS REQUIRED FOR 18".  
 TOTAL OF 5 SECTIONS REQUIRED FOR 24".  
 SEE SPECIAL PROVISIONS FOR FURTHER DETAILS.



**BAR L**  
NO SCALE



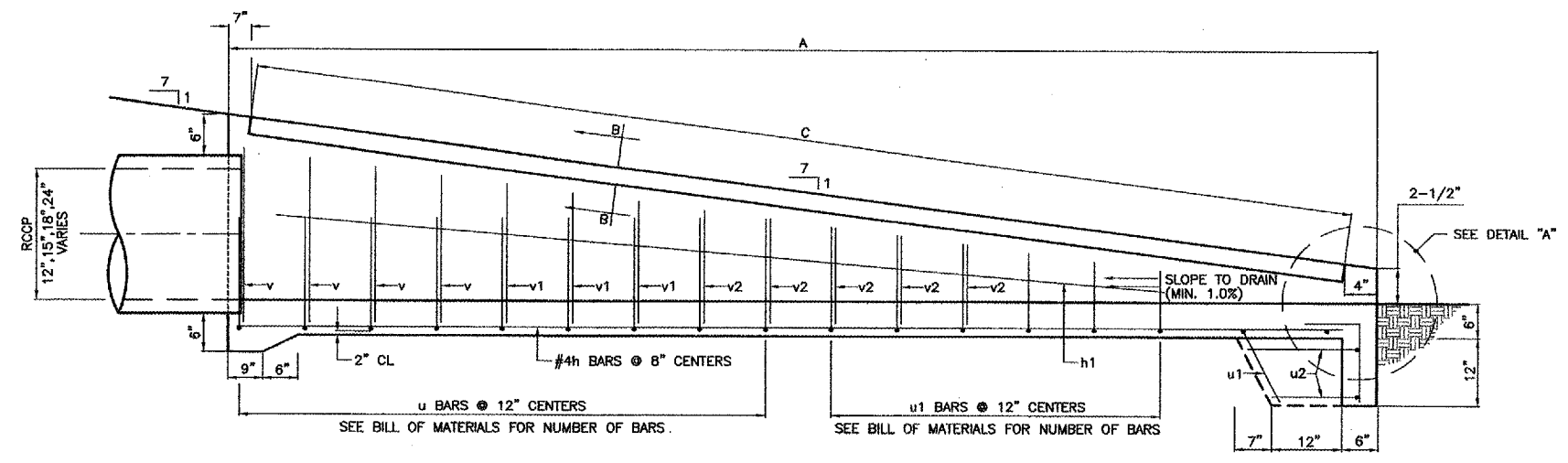
**BAR U, U1 AND U2**  
NO SCALE

**BILL OF MATERIALS**  
INLET BOX

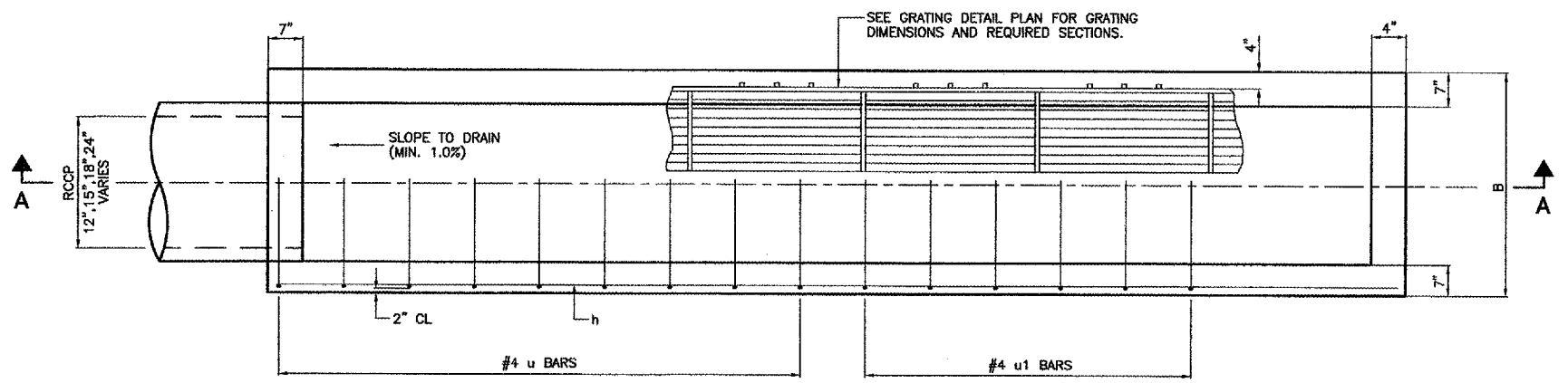
TYPE	BAR	QUANTITY	SIZE	LENGTH
12"	h	4	#4	9'-11"
15"	h	4	#4	11'-7"
18"	h	6	#4	13'-8"
24"	h	6	#4	17'-6"
12"	h1	2	#4	8'-0"
15"	h1	2	#4	10'-0"
18"	h1	2	#4	12'-0"
24"	h1	2	#4	15'-0"
12"	L	4	#4	2'-0"
15"	L	4	#4	2'-0"
18"	L	4	#4	2'-0"
24"	L	4	#4	2'-0"
12"	U	4	#4	5'-2"
15"	U	6	#4	5'-6"
18"	U	8	#4	5'-9"
24"	U	12	#4	6'-4"
12"	U1	4	#4	4'-8"
15"	U1	3	#4	5'-0"
18"	U1	4	#4	5'-3"
24"	U1	4	#4	5'-10"
12"	U2	2	#4	4'-8"
15"	U2	2	#4	5'-0"
18"	U2	2	#4	5'-3"
24"	U2	2	#4	5'-10"
12"	V	4	#4	1'-4"
15"	V	4	#4	1'-8"
18"	V	6	#4	1'-10"
24"	V	6	#4	2'-5"
12"	V1	-	#4	-
15"	V1	4	#4	1'-4"
18"	V1	6	#4	1'-5"
24"	V1	6	#4	2'-0"
12"	V2	-	#4	-
15"	V2	-	#4	-
18"	V2	-	#4	-
24"	V2	8	#4	1'-6"
<b>CONCRETE STRUCTURES</b>				
12"Ø		CU.YD.	2	
15"Ø		CU.YD.	2	
18"Ø		CU.YD.	3	
24"Ø		CU.YD.	3	
<b>REINFORCEMENT BARS</b>				
12"Ø		POUND	85	
15"Ø		POUND	100	
18"Ø		POUND	145	
24"Ø		POUND	200	
<b>GRATING</b>				
12"Ø		SQ.FT.	18	
15"Ø		SQ.FT.	25	
18"Ø		SQ.FT.	32	
24"Ø		SQ.FT.	51	

**TABLE OF DIMENSIONS**

DIMENSION	12"Ø	15"Ø	18"Ø	24"Ø
A	10'-3"	12'-1"	14'-0"	17'-10"
B	2'-6"	2'-10"	3'-1"	3'-8"
C	9'-5"	11'-4"	13'-3"	17'-1"



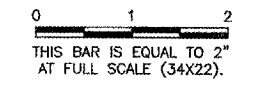
**SECTION A-A**  
NO SCALE



**PLAN**  
NO SCALE

REVISIONS

NUMBER	BY	DATE



**PALWAUKEE MUNICIPAL AIRPORT**  
**WHEELING / PROSPECT HEIGHTS ILLINOIS**  
**NORTHEAST QUADRANT SITEWORK**  
**SLOPE BOX INLET DETAILS**

© Copyright CMT, Inc.  
**CMT**  
 CRAWFORD, MURPHY & TILLY, INC.  
 CONSULTING ENGINEERS  
 License No. 184-000618



DESIGN BY: ATI  
 DRAWN BY: JRO  
 CHECKED BY:  
 APPROVED BY:  
 DATE: 06/28/05  
 JOB No: 03290-02  
 ILLINOIS PROJECT: PWK-3471