


| DATE | REVISION |
|------|----------|
| | |
| | |
| | |
| | |
| | |
| | |
| | |
| | |
| | |

LITCHFIELD MUNICIPAL AIRPORT
LITCHFIELD, ILLINOIS

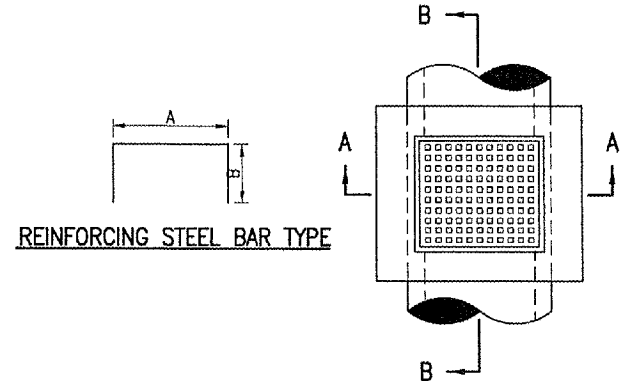
IL PROJ.: 3LF-2774

| | | |
|-----------------------|--------------------|---------------|
| Project No. 814-05THD | Drawn R-531DRN.DWG | Date 03/28/05 |
| Scale NOT TO SCALE | Drawn JMB | Reviewed JMB |
| Date 03/28/05 | Drawn JMB | Reviewed CAH |
| LAYOUT | JMB | 03/28/05 |
| DRAWN | JMB | 03/28/05 |
| REVIEWED | CAH | xx/xx/xx |



Hanson Professional Services Inc.
1026 South Sixth Street
Springfield, Illinois 62703-2885
Offices Nationwide

T-HANGAR
SITE DEVELOPMENT
PROPOSED
DRAINAGE
DETAILS



| REINFORCING BARS SCHEDULE | | | | | |
|---------------------------|--------------------|------------|-------|------|------------------------------|
| TYPE | QUANTITY PER INLET | DIMENSIONS | | SIZE | APPROX. WT. OF BARS IN INLET |
| | | A | B | | |
| A | 2 | 3'-4" | 2'-4" | #5 | 16.7 |

INLET NOTES

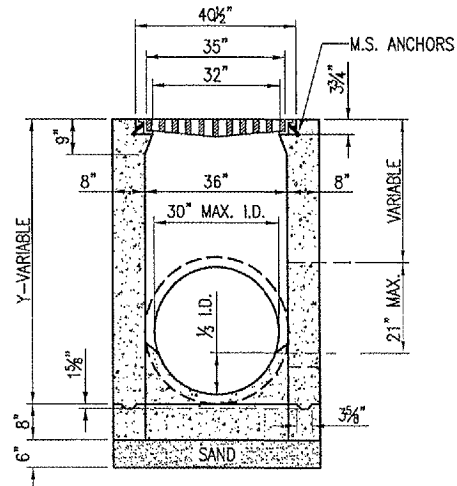
INLET TO BE CONSTRUCTED OF STRUCTURAL P.C. CONCRETE. THE CONTRACT UNIT PRICE PER INLET SHALL INCLUDE THE FRAME, GRATE AND STEPS IN PLACE AND COMPLETE PER UNIT.

1/2" CHAMFER TO BE USED ON ALL EXPOSED CORNERS OF INLETS. BARS TO BE INSTALLED 2" FROM FACE OF WALLS.

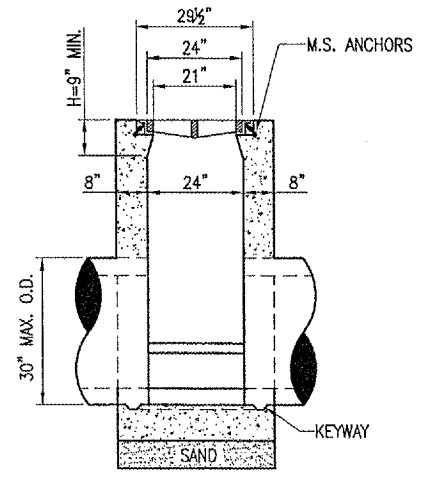
THE FRAME AND GRATE SHALL BE NEENAH R-3475-E, DEETER 2425-E.

"H" SHALL BE EQUAL TO THE PROPOSED PAVEMENT THICKNESS AND NOT LESS THAN THE ATTACHED MINIMUMS. TYPE A _____ 9" MINIMUM.

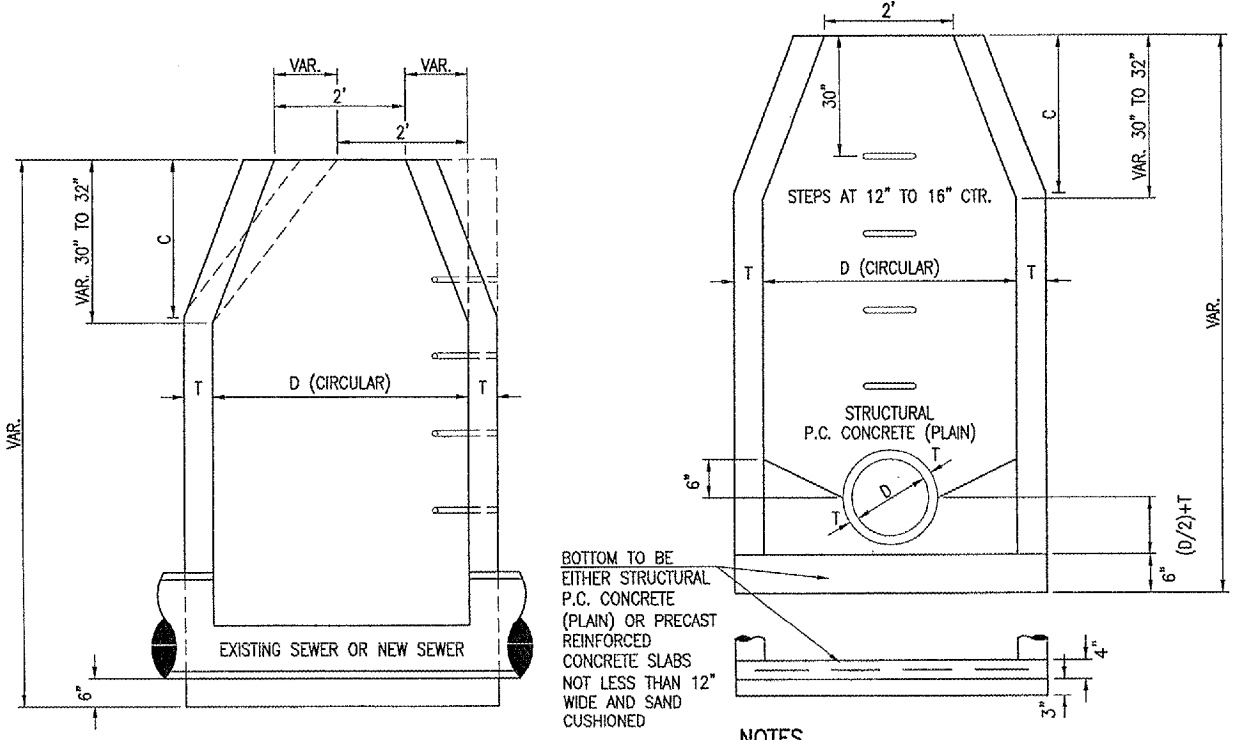
INLET STEPS SHALL BE NEENAH R-1980-1. 12" TO 15" C.C. STEPS TO BE INSTALLED WHEN Y IS GREATER THAN 5'. THE COST OF THE STEPS SHALL BE INCLUDED IN THE CONTRACT UNIT PRICE FOR EACH INLET.



SECTION A-A



SECTION B-B



BOTTOM TO BE EITHER STRUCTURAL P.C. CONCRETE (PLAIN) OR PRECAST REINFORCED CONCRETE SLABS NOT LESS THAN 12" WIDE AND SAND CUSHIONED

NOTES

CAST IRON STEPS SHALL BE NEENAH R-1980-1, DEETER 16/3, EAST JORDAN 8502 OR EQUAL.

THE CONTRACT UNIT PRICE FOR MANHOLE HOLE TYPE A, SHALL INCLUDE THE FRAME AND LID.

THE CONE OF THE MANHOLE SHALL BE CONSTRUCTED AS SHOWN BY THE DOTTED LINES.

| ALT. MATERIAL FOR WALLS | D | C | T |
|--------------------------------|----|-------|----|
| PRECAST REINFORCED CONC. RINGS | 4' | 2'-6" | 5" |
| MONOLITHIC CONCRETE | 4' | 2'-6" | 6" |

MANHOLE TYPE A
NOT TO SCALE