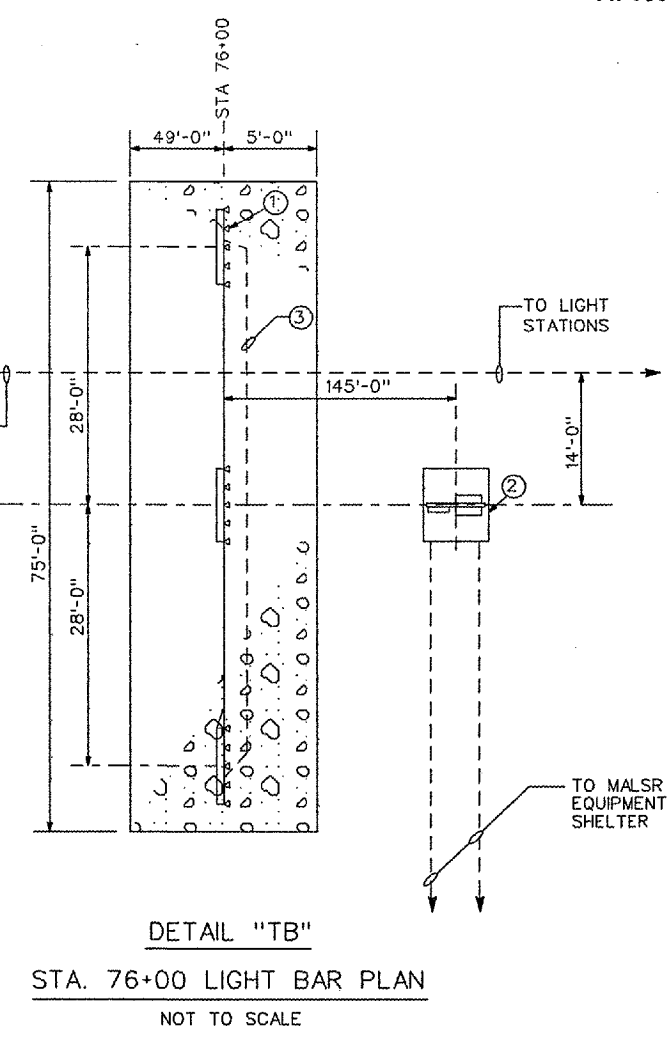
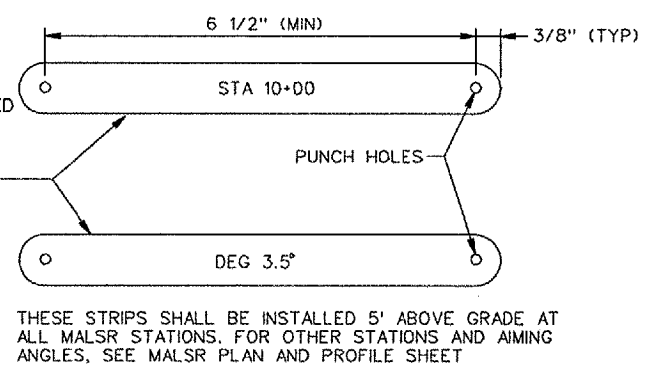
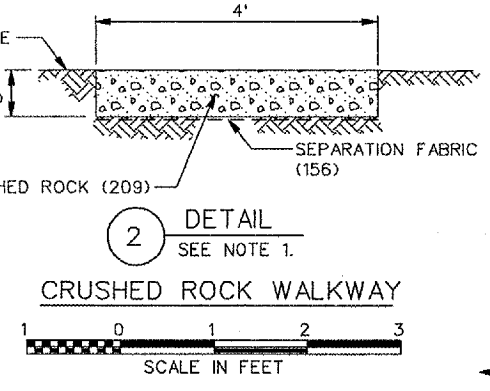
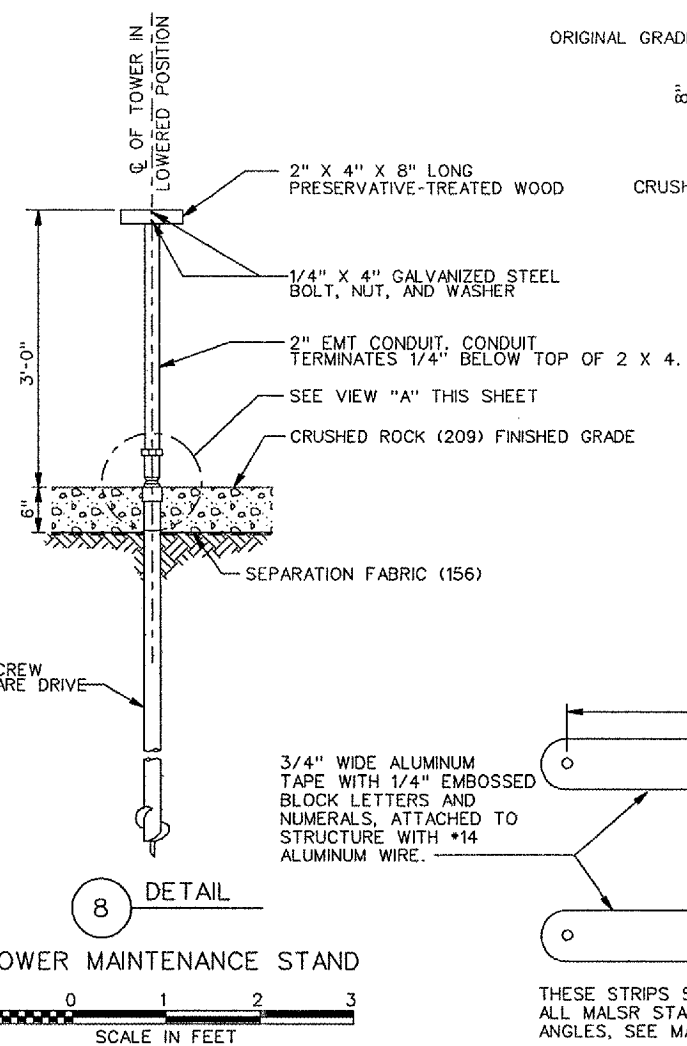
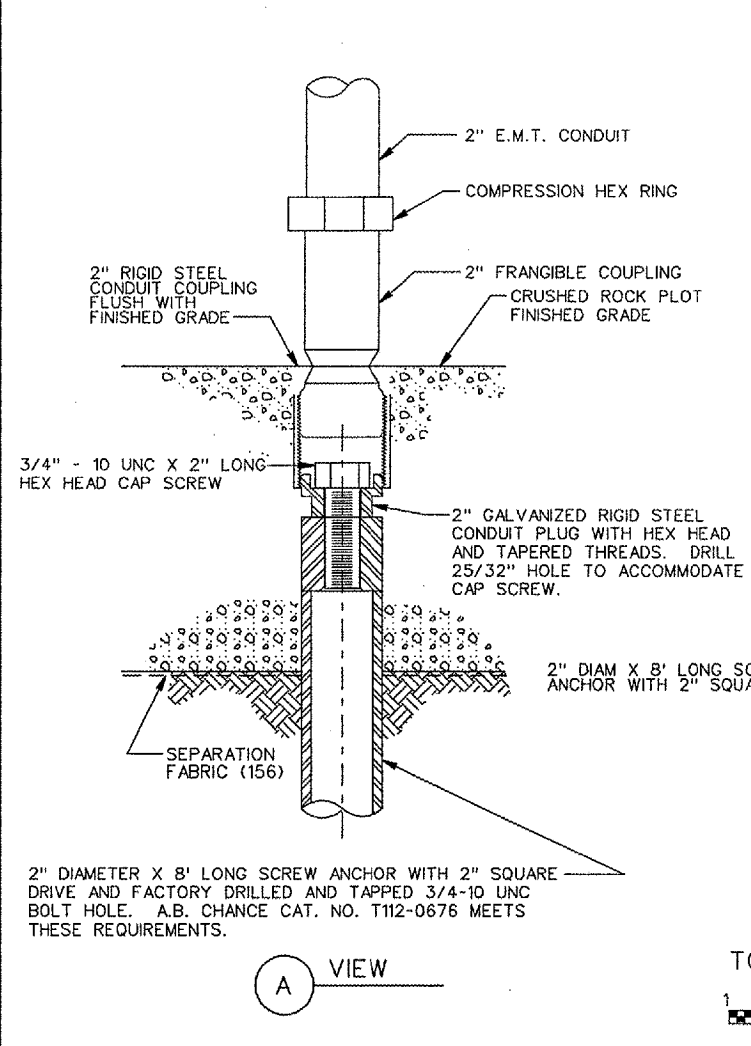
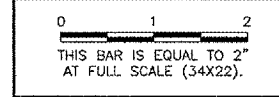
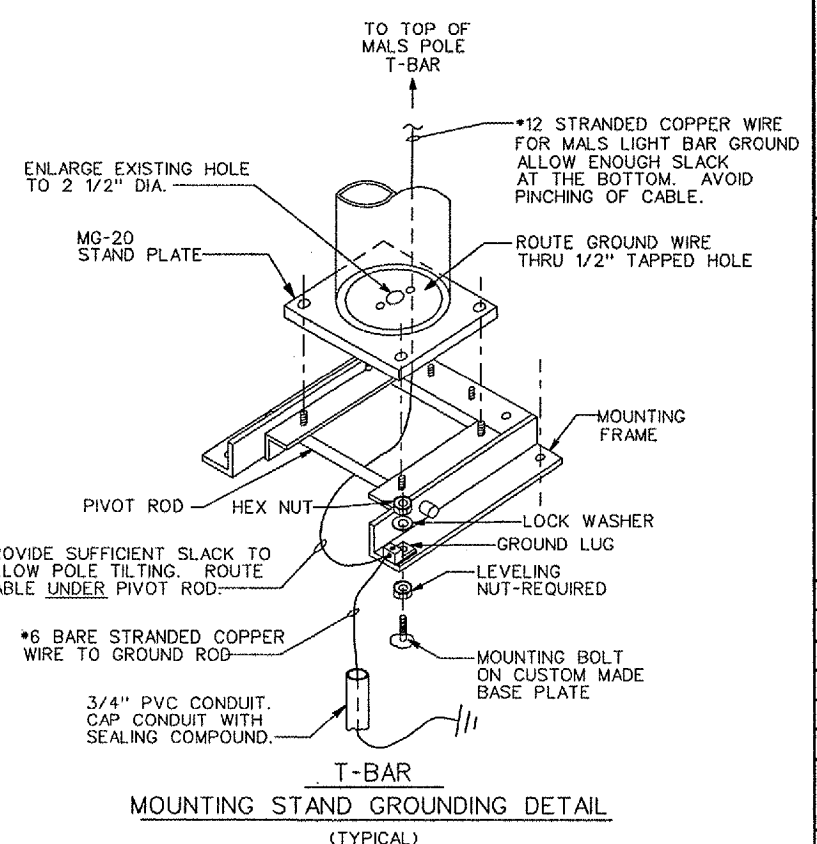
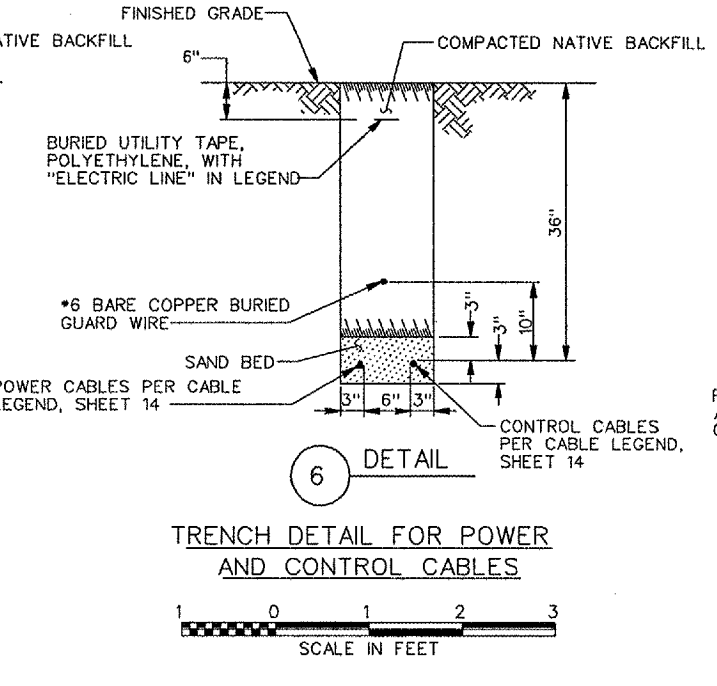
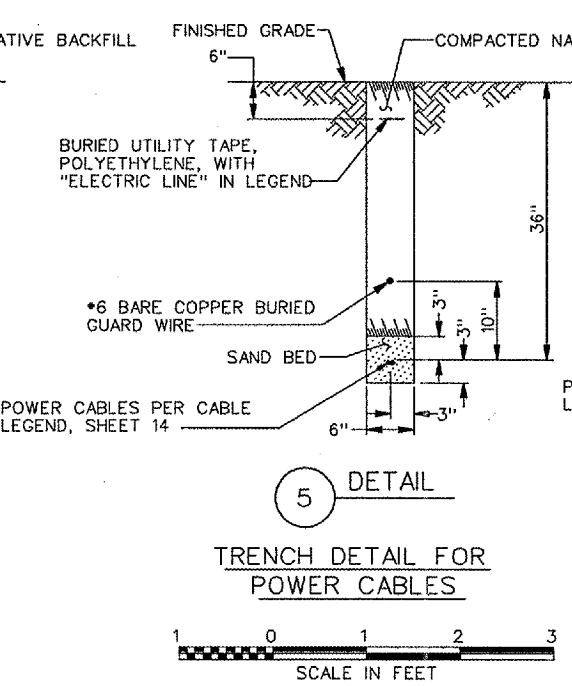
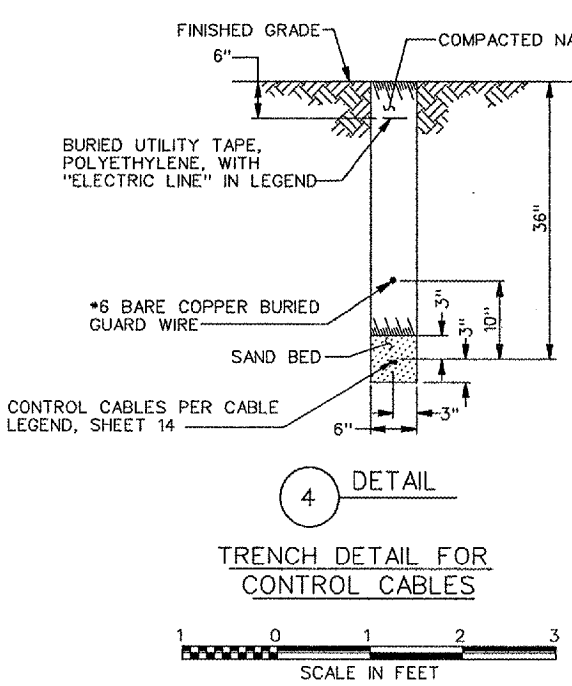


REVISIONS		
NUMBER	BY	DATE

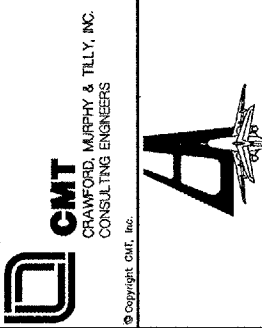


- NUMBERED LEGEND:**
- ① MALS LIR MG-20 T-BAR TOWER SHEET 19.
  - ② MALS DISTRIBUTION AND MONITORING RACK PER SHEET 16.
  - ③ POWER CABLES PER SHEETS 14 AND 15.

- NOTE:**
1. IN THE CRUSHED ROCK PLOT AREA, TOPSOIL IS REMOVED "TO A DEPTH OF 8", SEPARATION FABRIC IS PLACED OVER THE EXCAVATED AREA, AND A MINIMUM DEPTH OF CRUSHED ROCK IS PLACED AND COMPACTED. THE FINISHED CRUSHED ROCK SURFACE SHALL HAVE NO WATER-RETAINING DEPRESSIONS.
  2. WHERE SPECIFIC MANUFACTURERS OF EQUIPMENT ARE GIVEN, THE CONTRACTOR MAY SUBMIT ALTERNATE EQUIPMENT EQUAL TO THAT PROPOSED FOR CONSIDERATION BY THE ENGINEER.



**FREERPORT - ALBERTUS AIRPORT  
 FREERPORT, ILLINOIS**  
 ILLINOIS PROJECT: FEP-3132 / A.I.P. PROJECT: 3-17-0045-B16  
**MISCELLANEOUS DETAILS**



DESIGN BY:	
DRAWN BY:	
CHECKED BY:	
APPROVED BY:	
DATE:	06/17/05
JOB No:	02294-08
SHEET 25 OF 34 SHEETS	