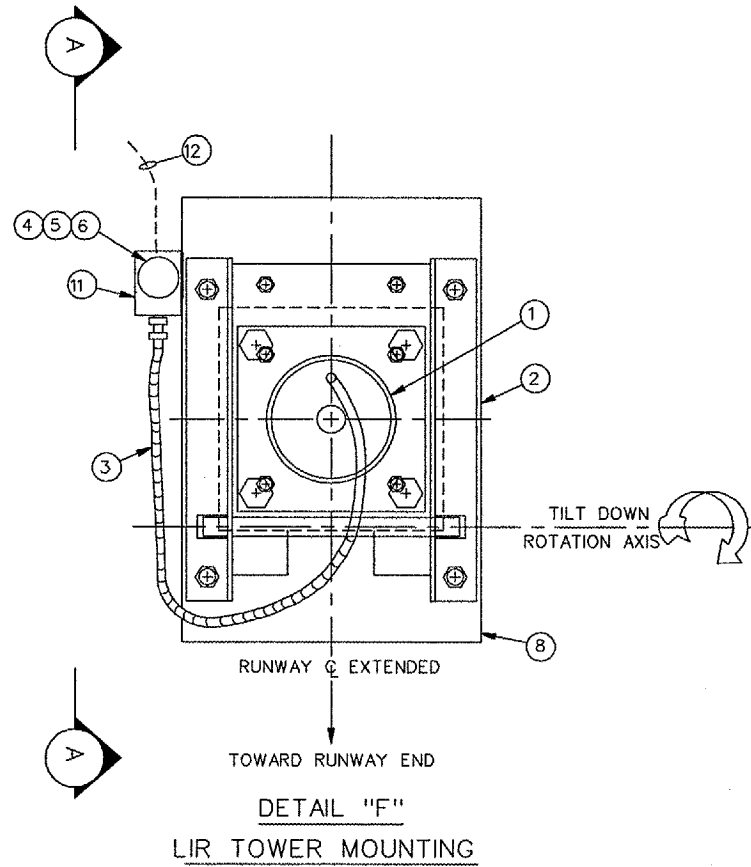
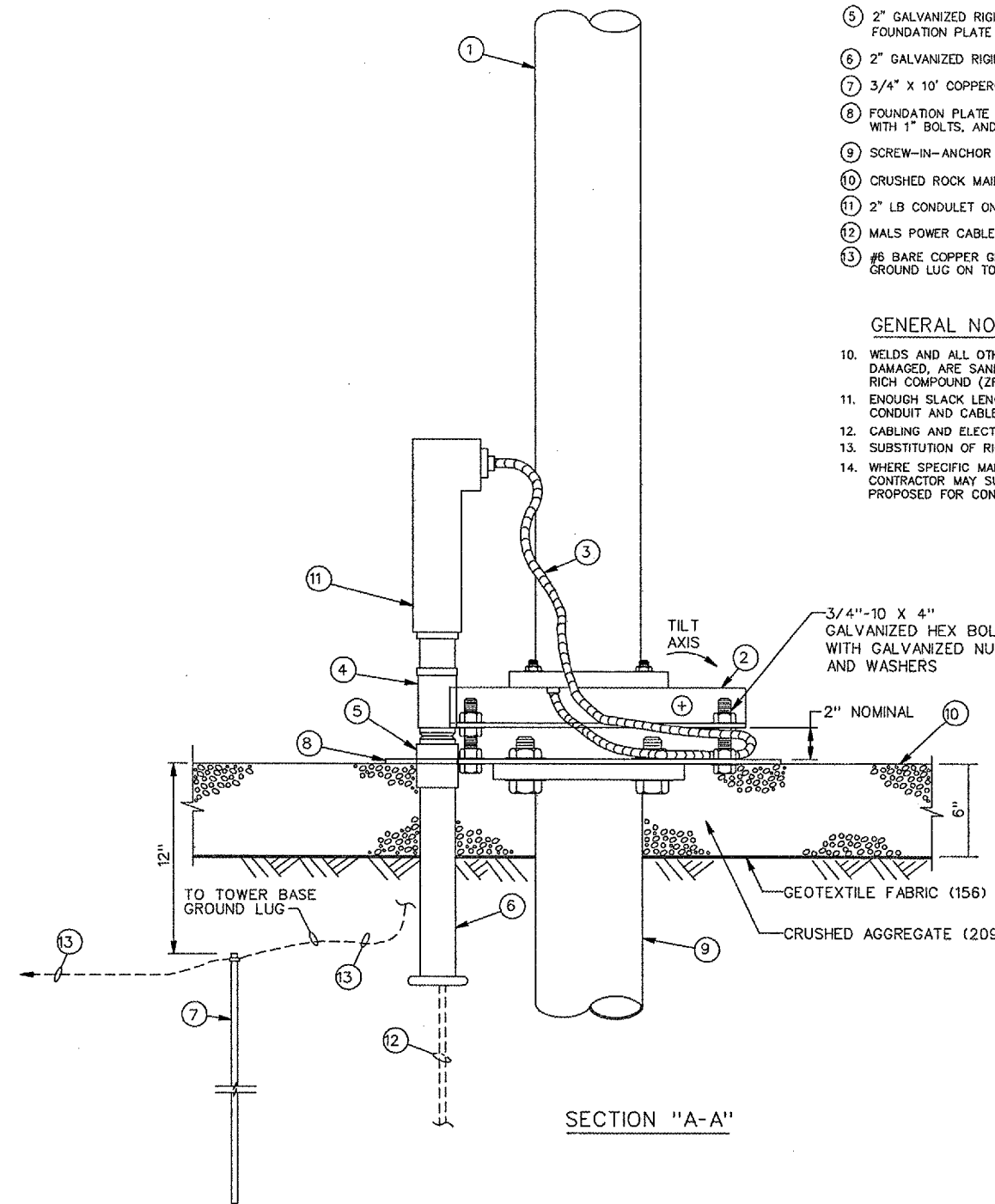


DETAIL "E"
 FOUNDATION PLATE

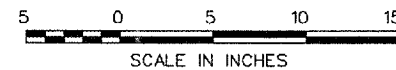


DETAIL "F"
 LIR TOWER MOUNTING

SEE SHEET 1 FOR CONTINUATION



SECTION "A-A"



NUMBERED LEGEND:

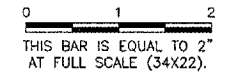
- ① FRANGIBLE LIR T-BAR TOWER.
- ② TOWER BASE ASSEMBLY.
- ③ 1/2" LIQUID-TIGHT FLEXIBLE CONDUIT. SEE NOTE 11.
- ④ 2" FRANGIBLE COUPLING.
- ⑤ 2" GALVANIZED RIGID STEEL CONDUIT COUPLING WELDED TO FOUNDATION PLATE (8). SEE NOTE 10.
- ⑥ 2" GALVANIZED RIGID STEEL CONDUIT WITH GROUNDING BUSHING.
- ⑦ 3/4" X 10' COPPERCLAD STEEL GROUNDING ELECTRODE.
- ⑧ FOUNDATION PLATE PER DETAIL "E", ATTACHED TO ANCHOR FOUNDATION WITH 1" BOLTS, AND FLUSH WITH CRUSHED ROCK FINISHED GRADE.
- ⑨ SCREW-IN-ANCHOR FOUNDATION, A.B. CHANCE CAT. NO. T112-0262.
- ⑩ CRUSHED ROCK MAINTENANCE AREA PER DETAIL "J", ON SHEET 3.
- ⑪ 2" LB CONDULET ON FRANGIBLE COUPLING PER DETAIL "B", SHEET 1.
- ⑫ MALS POWER CABLES PER SHEET 1.
- ⑬ #6 BARE COPPER GROUND WIRE. GROUND WIRE IS CONNECTED TO GROUND LUG ON TOWER BASE PER DETAIL "C", SHEET 1.

GENERAL NOTES: (CONTINUATION) CONSTRUCT THE MALS SUCH THAT:

10. WELDS AND ALL OTHER PLACES WHERE THE ZINC COATING HAS BEEN DAMAGED, ARE SANDED TO BRIGHT METAL AND COATED WITH ZINC RICH COMPOUND (ZRC), PER SPECIFICATIONS.
11. ENOUGH SLACK LENGTH IS PROVIDED TO PREVENT STRAIN ON THE CONDUIT AND CABLES, WHEN THE TOWER IS TILTED UP AND DOWN.
12. CABLING AND ELECTRICAL CONNECTIONS ARE PER SHEET 26.
13. SUBSTITUTION OF RIGID CONDUIT FOR EMT IS NOT ALLOWED.
14. WHERE SPECIFIC MANUFACTURERS OF EQUIPMENT ARE GIVEN, THE CONTRACTOR MAY SUBMIT ALTERNATE EQUIPMENT EQUAL TO THAT PROPOSED FOR CONSIDERATION BY THE ENGINEER.

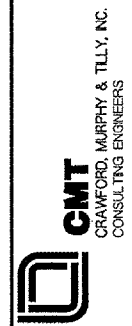
REVISIONS

NUMBER	BY	DATE



**FREERPORT - ALBERTUS AIRPORT
 FREERPORT, ILLINOIS**

ILLINOIS PROJECT: FEP-3152 / A.I.P. PROJECT: 3-17-0045-B16
**MALS LIR MG-20 T-BAR TOWER
 SHEET 2**



DESIGN BY:

DRAWN BY:

CHECKED BY:

APPROVED BY:

DATE: 06/17/05

JOB No: 02294-08