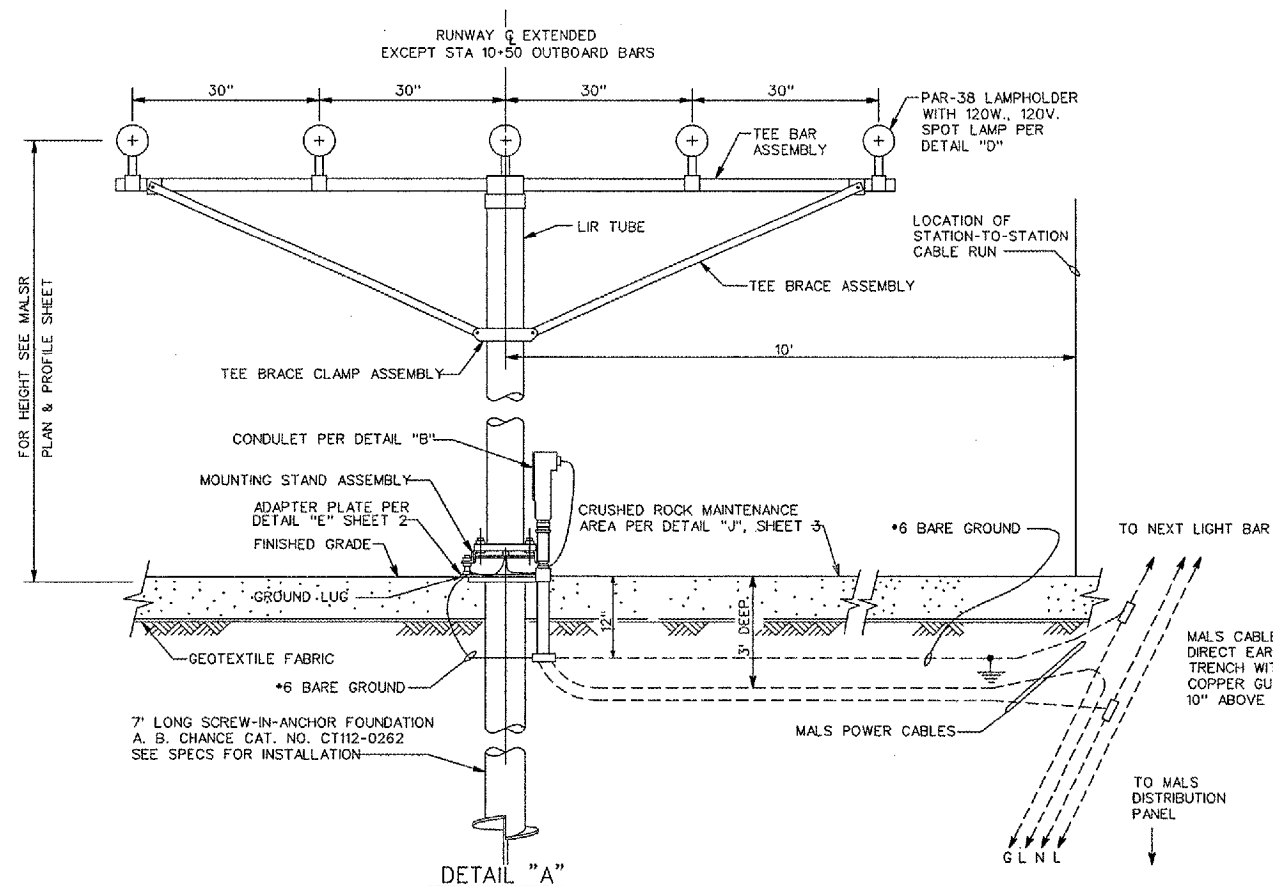
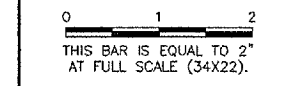


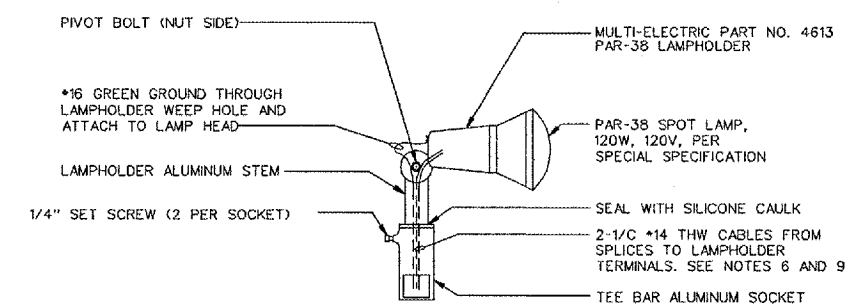
GENERAL NOTES:

1. GROUNDING CONDUCTORS ARE ATTACHED TO GROUNDING ELECTRODES WITH EXOTHERMIC WELDING KITS. AT STATION 10+50 THE THREE GROUNDING CONDUCTORS FROM THE LIGHT BARS ARE ATTACHED TO THE SINGLE COMMON GROUNDING CONDUCTOR. BACKFILL TO ALLOW FOR PROPER DRAINAGE.
2. LOWER CABLE ASSEMBLIES ARE 2-1/C #10 TYPE U.S.E. CABLES AND AMERACE RECEPTACLE CONNECTOR, STYLE 90R-B6. THE RECEPTACLE CONNECTOR IS HELD IN PLACE PER DETAIL "B".
3. UPPER CABLE ASSEMBLIES ARE 2-1/C #12 THW CABLES AND AMERACE PLUG CONNECTOR, STYLE, 90P-56.
4. SPLICES ARE MADE WITH 3M SPLICING KITS AND CRIMPIT CONNECTORS.
5. CIRCUITRY IS PER SHEET 14.
6. CAUTION IS EXERCISED TO PREVENT SOCKET RETENTION BOLTS FROM DAMAGING CABLE INSULATION.
7. THE #10 SLOTTED HEX HEAD STAINLESS STEEL SCREWS (3 EACH COME WITH EACH TUBE CAP) ARE USED TO JOIN GROUND WRES. ALSO USE THE SCREWS WITH CLAMPS, TO CLAMP BUNDLES OF CABLES TO THE INSIDE OF THE TUBE.
8. LIR STRUCTURE IS ASSEMBLED PER SHEET 23.
9. EACH POWER CABLE OR GROUND WIRE CONNECTED TO A PAR-38 LAMPHOLDER HAS AT LEAST 3" OF SLACK, FOR EASE OF MAINTENANCE.
10. WHERE SPECIFIC MANUFACTURERS OF EQUIPMENT ARE GIVEN, THE CONTRACTOR MAY SUBMIT ALTERNATE EQUIPMENT EQUAL TO THAT PROPOSED FOR CONSIDERATION BY THE ENGINEER.

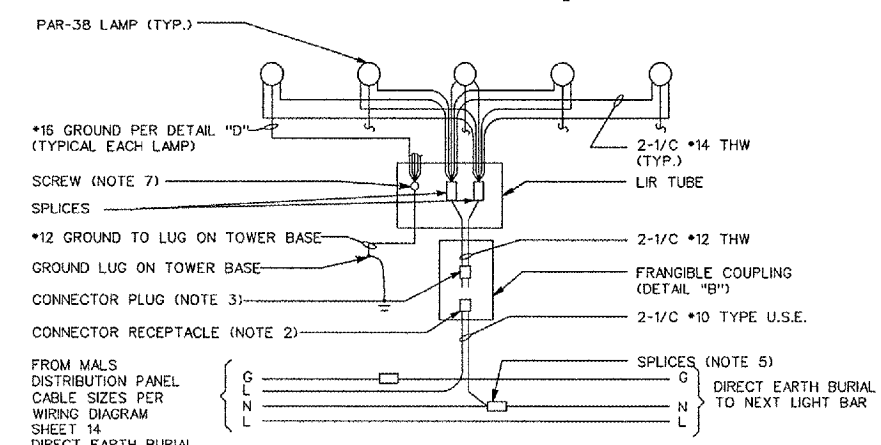
REVISIONS		
NUMBER	BY	DATE



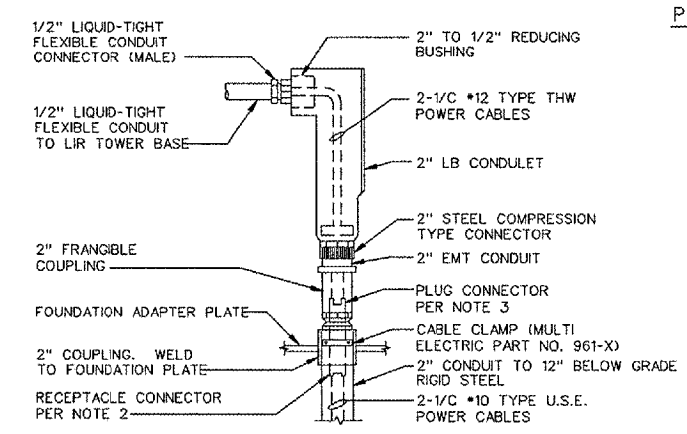
DETAIL "A"
 TILT-DOWN MALS BAR
 STATIONS 68+06, 70+00, 72+00,
 74+00, 76+00, 78+00, 80+00
 (LOOKING PARALLEL TO RUNWAY G)



DETAIL "D"
 PAR-38 LAMPHOLDER MOUNTING
 N.T.S.



DETAIL "C"
 CONNECTIONS FOR FRANGIBLE LIR LIGHT BAR
 STATIONS THROUGH
 N.T.S.



DETAIL "B"
 MALS BAR CONDULET
 STA THROUGH
 N.T.S.

**FREEPORT - ALBERTUS AIRPORT
 FREEPORT, ILLINOIS**
 ILLINOIS PROJECT: FEP-3192 / A.I.P. PROJECT: 3-17-0046-B16
**MALS LIR MG-20 T-BAR TOWER
 SHEET 1**

CMT
 CRAWFORD, MURPHY & TILLY, INC.
 CONSULTING ENGINEERS
 Copyright CMT, Inc.

DESIGN BY:	
DRAWN BY:	
CHECKED BY:	
APPROVED BY:	
DATE:	06/17/05
JOB No:	02294-08
SHEET 19 OF 34 SHEETS	