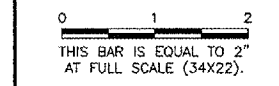


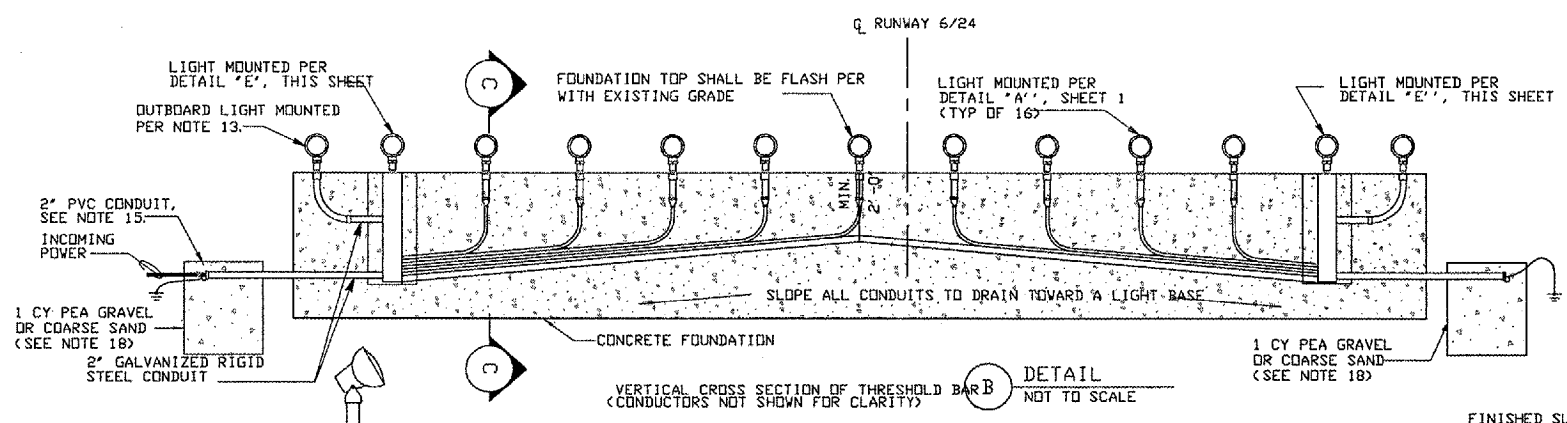
Table with 3 columns: NUMBER, BY, DATE. Title: REVISIONS



FREEPORT - ALBERTUS AIRPORT
FREEPORT, ILLINOIS
ILLINOIS PROJECT: FEP-3132 / A.I.P. PROJECT: 3-17-0045-B16
MALS FRANGIBLE THRESHOLD BAR
SHEET 2

CMT CONSULTING ENGINEERS logo and name.

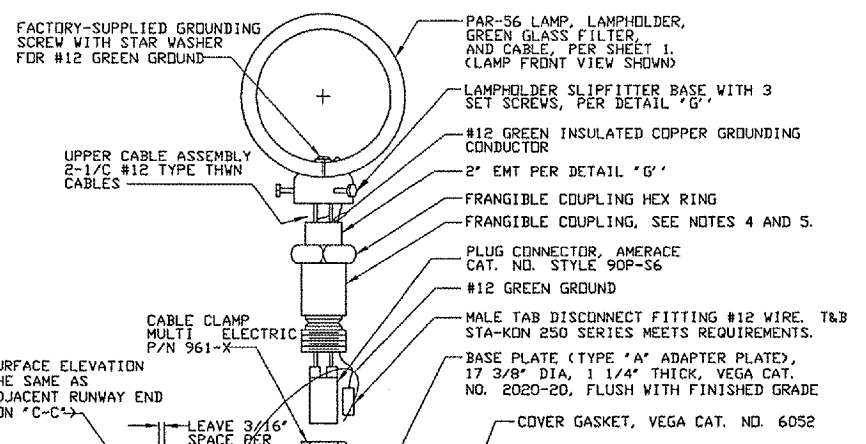
Table with 2 columns: Field (DESIGN BY, DRAWN BY, CHECKED BY, APPROVED BY, DATE, JOB No.) and Value.



VERTICAL CROSS SECTION OF THRESHOLD BAR B
DETAIL
(CONDUIT NOT SHOWN FOR CLARITY)
NOT TO SCALE

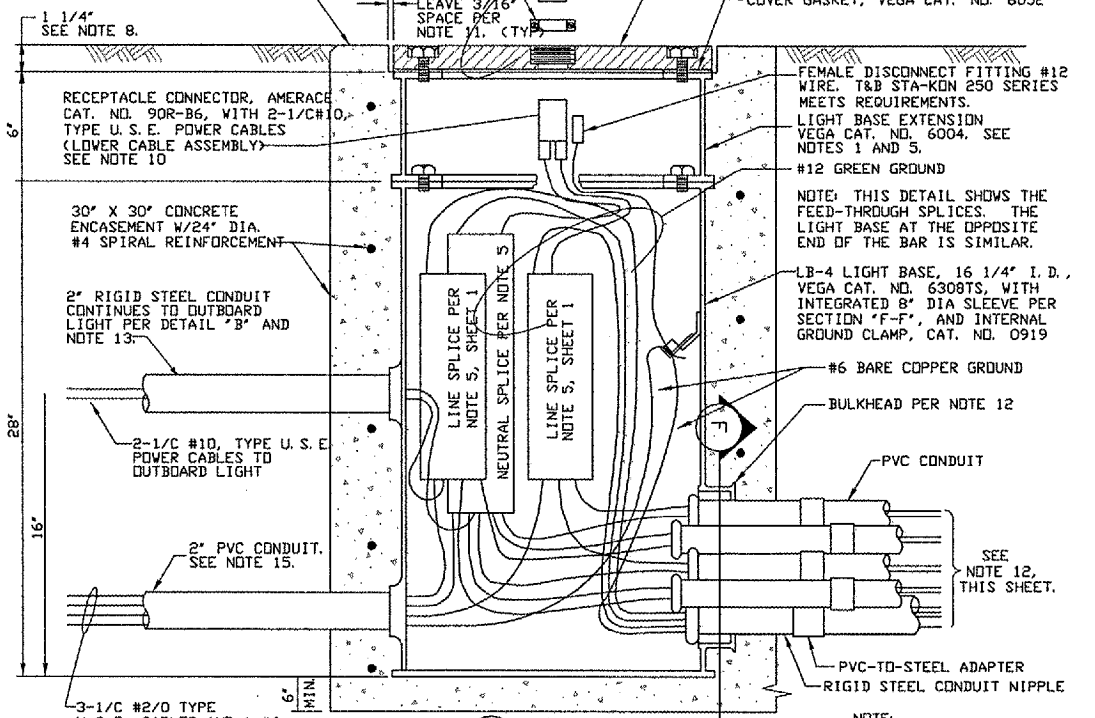
NOTES (CONTINUED FROM SHEET 1)

- 12. AT THE SOUTH LIGHT BASE HOLDING THE FEED-THROUGH SPLICES...
13. THE OUTBOARD LIGHTS ARE MOUNTED PER DETAIL 'A', SHEET 1...
14. TEMPORARY PLYWOOD COVERS PROVIDED WITH THE LIGHT BASES...
15. 2" SCH 40 PVC CONDUIT TERMINATES 18" OUTSIDE EDGE OF THRESHOLD BAR...
16. ALL LIGHT BASES SHALL BE GROUNDED AS SHOWN IN DETAIL 'E'...
17. A HOLE IS DRILLED IN THE CABLE CLAMP, AND THE #12 GREEN INSULATED...
18. THE TOP OF PEA GRAVEL SHALL BE NOT MORE THAN 2" ABOVE...
19. WHERE SPECIFIC MANUFACTURERS OF EQUIPMENT ARE GIVEN...



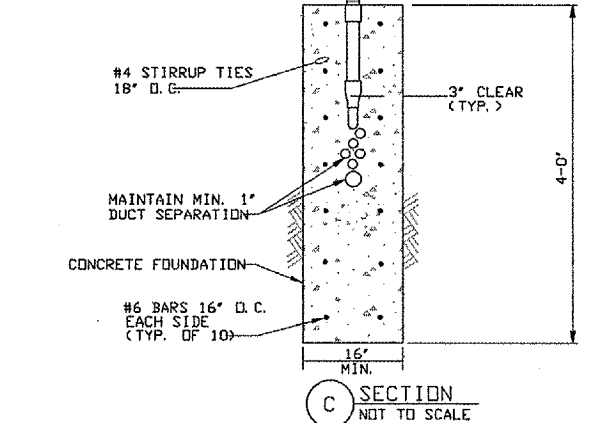
FACTORY-SUPPLIED GROUNDING SCREW WITH STAR WASHER FOR #12 GREEN GROUND
UPPER CABLE ASSEMBLY 2-1/2" #12 TYPE THWN CABLES
CABLE CLAMP MULTI ELECTRIC P/N 961-X
FINISHED SURFACE ELEVATION SHALL BE THE SAME AS EXISTING ADJACENT RUNWAY END (SEE SECTION 'C-C')

- PAR-56 LAMP, LAMPHOLDER, GREEN GLASS FILTER AND CABLE, PER SHEET 1. (CLAMP FRONT VIEW SHOWN)
LAMPHOLDER SLIPFITTER BASE WITH 3 SET SCREWS, PER DETAIL 'G'
#12 GREEN INSULATED COPPER GROUNDING CONDUCTOR
2" EMT PER DETAIL 'G'
FRANGIBLE COUPLING HEX RING
FRANGIBLE COUPLING, SEE NOTES 4 AND 5.
PLUG CONNECTOR, AMERACE CAT. NO. STYLE 90P-S6
#12 GREEN GROUND
MALE TAB DISCONNECT FITTING #12 WIRE. T&B STA-KON 250 SERIES MEETS REQUIREMENTS.
BASE PLATE (TYPE 'A' ADAPTER PLATE), 17 3/8" DIA, 1 1/4" THICK, VEGA CAT. NO. 2020-20, FLUSH WITH FINISHED GRADE
COVER GASKET, VEGA CAT. NO. 6052

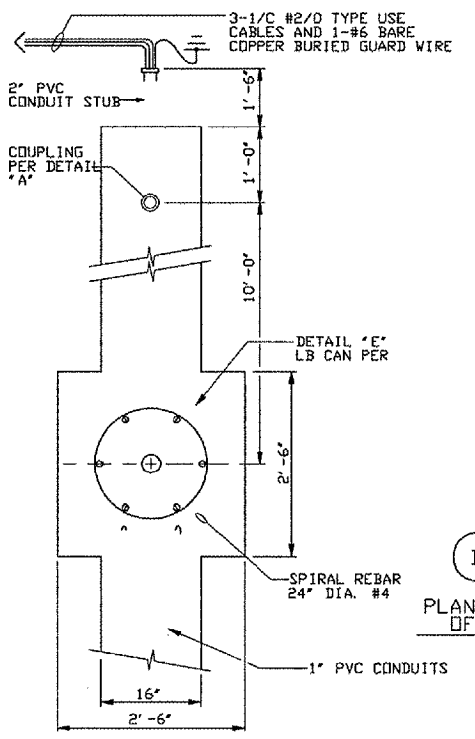


RECEPTACLE CONNECTOR, AMERACE CAT. NO. 90R-B6, WITH 2-1/2" DIA. TYPE U.S.E. POWER CABLES (LOWER CABLE ASSEMBLY) SEE NOTE 10
30" X 30" CONCRETE ENCASUREMENT W/24" DIA. #4 SPIRAL REINFORCEMENT
2" RIGID STEEL CONDUIT CONTINUES TO OUTBOARD LIGHT PER DETAIL 'B' AND NOTE 13.
2-1/2" #10, TYPE U.S.E. POWER CABLES TO OUTBOARD LIGHT
2" PVC CONDUIT, SEE NOTE 15.
3-1/2" #2/0 TYPE U.S.E. CABLES AND 1-#6 BARE COPPER GROUND WIRE FROM INTERFACE JUNCTION BOX
LINE SPLICE PER NOTE 5, SHEET 1
NEUTRAL SPLICE PER NOTE 5
LINE SPLICE PER NOTE 5, SHEET 1
FEMALE DISCONNECT FITTING #12 WIRE. T&B STA-KON 250 SERIES MEETS REQUIREMENTS. LIGHT BASE EXTENSION VEGA CAT. NO. 6004. SEE NOTES 1 AND 5.
#12 GREEN GROUND
NOTE: THIS DETAIL SHOWS THE FEED-THROUGH SPLICES. THE LIGHT BASE AT THE OPPOSITE END OF THE BAR IS SIMILAR.
LB-4 LIGHT BASE, 16 1/4" I.D., VEGA CAT. NO. 6308TS, WITH INTEGRATED 8" DIA SLEEVE PER SECTION 'F-F', AND INTERNAL GROUND CLAMP, CAT. NO. 0919
#6 BARE COPPER GROUND
BULKHEAD PER NOTE 12
PVC CONDUIT
SEE NOTE 12, THIS SHEET.
PVC-TO-STEEL ADAPTER RIGID STEEL CONDUIT NIPPLE
NOTE: FOR CLARITY, THE CABLE COMPLEMENT SHOWN IN DETAIL 'E' IS PARTIAL, AND THE CABLE SLACK LOOPS ARE NOT SHOWN.

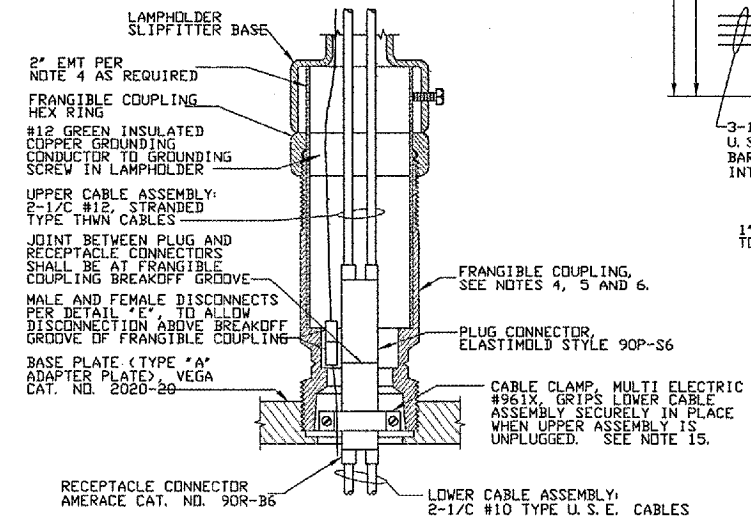
E DETAIL
NOT TO SCALE
LIGHT BASE INSTALLATION (SOUTH LIGHT BASE SHOWN)



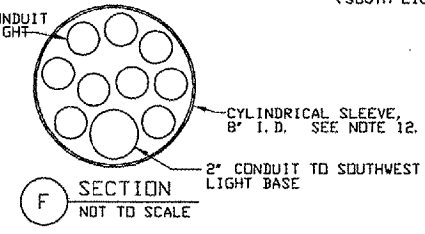
C SECTION
NOT TO SCALE



D DETAIL
PLAN-OUTBOARD END OF FOUNDATION
NOT TO SCALE



G DETAIL
FRANGIBLE COUPLING MOUNTING IN ADAPTER PLATE
NOT TO SCALE



F SECTION
NOT TO SCALE
CYLINDRICAL SLEEVE, 8" I.D. SEE NOTE 12.
2" CONDUIT TO SOUTHWEST LIGHT BASE

IMAGE FILES: