

THE LOCATION, SIZE AND TYPE OF MATERIAL OF EXISTING UNDERGROUND UTILITIES INDICATED ON THE PLANS IS NOT REPRESENTED AS BEING ACCURATE, SUFFICIENT OR COMPLETE. IT SHALL BE THE CONTRACTOR'S RESPONSIBILITY TO DETERMINE THE ACTUAL LOCATION OF ALL SUCH FACILITIES, INCLUDING SERVICE CONNECTIONS TO UNDERGROUND UTILITIES. PRIOR TO CONSTRUCTION, THE CONTRACTOR SHALL NOTIFY THE UTILITY COMPANIES OF HIS OPERATIONAL PLANS AND SHALL OBTAIN FROM THE RESPECTIVE UTILITY COMPANIES DETAILED INFORMATION AND ASSISTANCE RELATIVE TO THE LOCATION OF THEIR FACILITIES AND THE WORKING SCHEDULE OF THE COMPANIES FOR REMOVAL OR ADJUSTMENT WHERE REQUIRED. IN THE EVENT AN UNEXPECTED UTILITY INTERFERENCE IS ENCOUNTERED DURING CONSTRUCTION, THE CONTRACTOR SHALL IMMEDIATELY NOTIFY THE UTILITY COMPANY OF JURISDICTION. THE ENGINEER SHALL ALSO BE IMMEDIATELY NOTIFIED. ANY SUCH MAINS AND SERVICES SHALL BE RESTORED TO SERVICE AT ONCE AND PAID FOR BY THE CONTRACTOR AT NO ADDITIONAL COST TO THE CONTRACT.

CALL J.U.L.I.E. FOR UTILITY INFORMATION AT 1-800-892-0123. CONTACT AIRPORT PERSONNEL FOR ASSISTANCE IN LOCATING AIRPORT CABLES. CONTACT FAA FOR ASSISTANCE IN LOCATING FAA CABLES



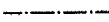


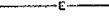
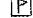
SUMMARY OF PROPOSED QUANTITIES (THIS SHEET)			
ITEM NUMBER	DESCRIPTION	UNIT	QUANTITY
AR107408	L-806 WIND CONE 8' LIGHTED	EA	2
AR108656	3/C #6 600V UG CABLE IN UD	L.F.	3,550
AR110014	4" DIRECTIONAL BORE	L.F.	170
AR800580	ELECTRIC SERVICE FOR RWY 24 AND RWY 30 WIND CONES	L.S.	1

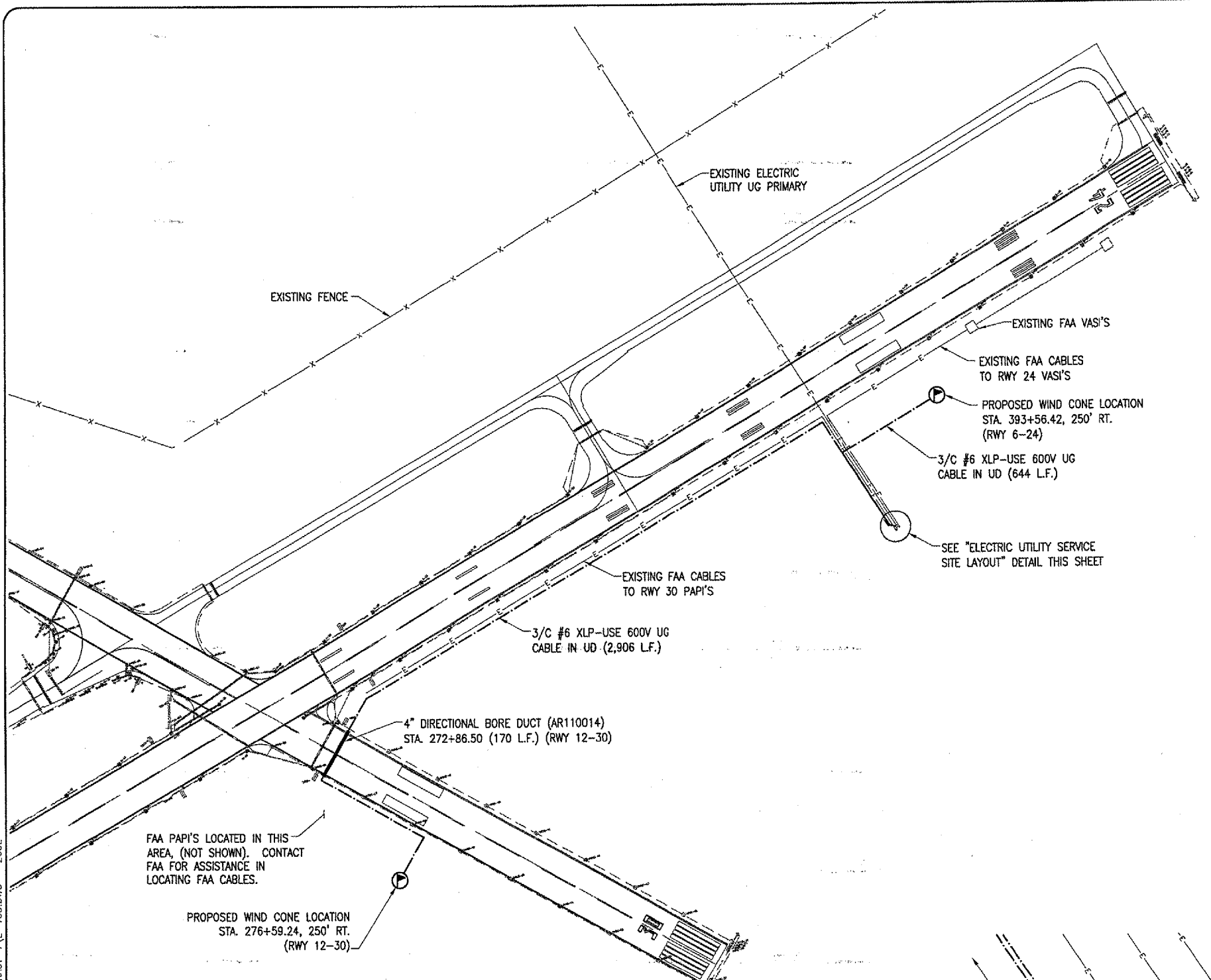
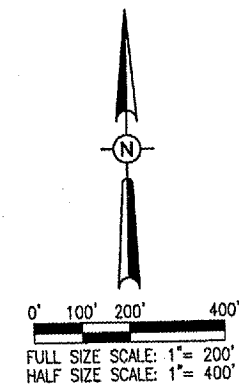
WIND CONE NOTES

THE PROPOSED WIND CONES SHALL BE INSTALLED AS SHOWN ON THIS SHEET & THE "WIND CONE ELEVATION DETAIL" SHEET, AND IN ACCORDANCE WITH THE SPECIAL PROVISIONS.

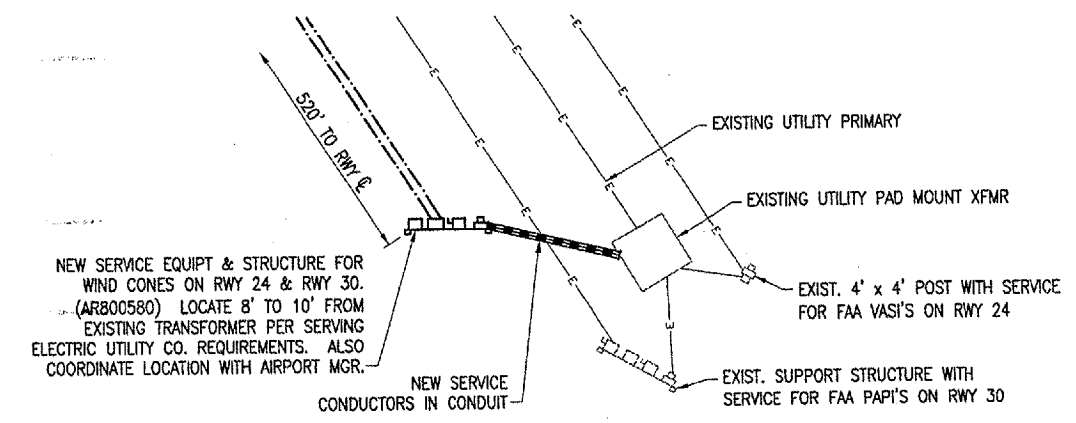
COORDINATE NEW ELECTRIC SERVICE WITH THE SERVING ELECTRIC UTILITY COMPANY (AMEREN IP, 2480 N. JASPER ST. MC H-15, DECATUR, IL 62526, ATTN MS. TAMMIE HAUGERUD, SENIOR ENGINEERING REP, PHONE: 217-425-6032, CELL PHONE: 217-412-6455, FAX: 217-424-7012)

LEGEND

-  EXISTING PAVEMENT
-  PROPOSED DUCT
-  PROPOSED 3/C #6 XLP-USE 600V UG CABLE IN UD - AR108656
-  PROPOSED SUPPLEMENTAL WIND CONE
-  EXISTING ELECTRICAL CABLES
-  EXISTING UNDERGROUND ELECTRICAL CABLES (FAA, UTILITY, ETC.)
-  EXISTING WIND CONE



**ELECTRICAL SITE PLAN FOR
RWY 24 & RWY 30 WIND CONES**



**ELECTRIC UTILITY SERVICE SITE LAYOUT
N.T.S.**

DATE	REVISION

DECATUR AIRPORT
DECATUR, ILLINOIS

IL. PROJ.: DEC-3414
A.I.P. PROJ.: 3-17-0033-28

DATE	BY	REVISION
04/22/05	KNL	LAYOUT
04/25/05	MY	DRAWN
06/07/06	CAH	REVIEWED

HANSON
Engineers, Architects, Scientists
1626 South Sixth Street
Springfield, Illinois 62761-2886
Office: Nationwide

TAXIWAY G WIDENING
PHASE II
ELECTRICAL SITE PLAN
RUNWAY 24 & RUNWAY 30
WIND CONES

JUN 10, 2005 12:52 PM CCC
I:\AIRPORTS\DECATUR\802-04TXD\AIRPORT\PROJECTS\CONTRACT-1\E-103.DWG - 2006