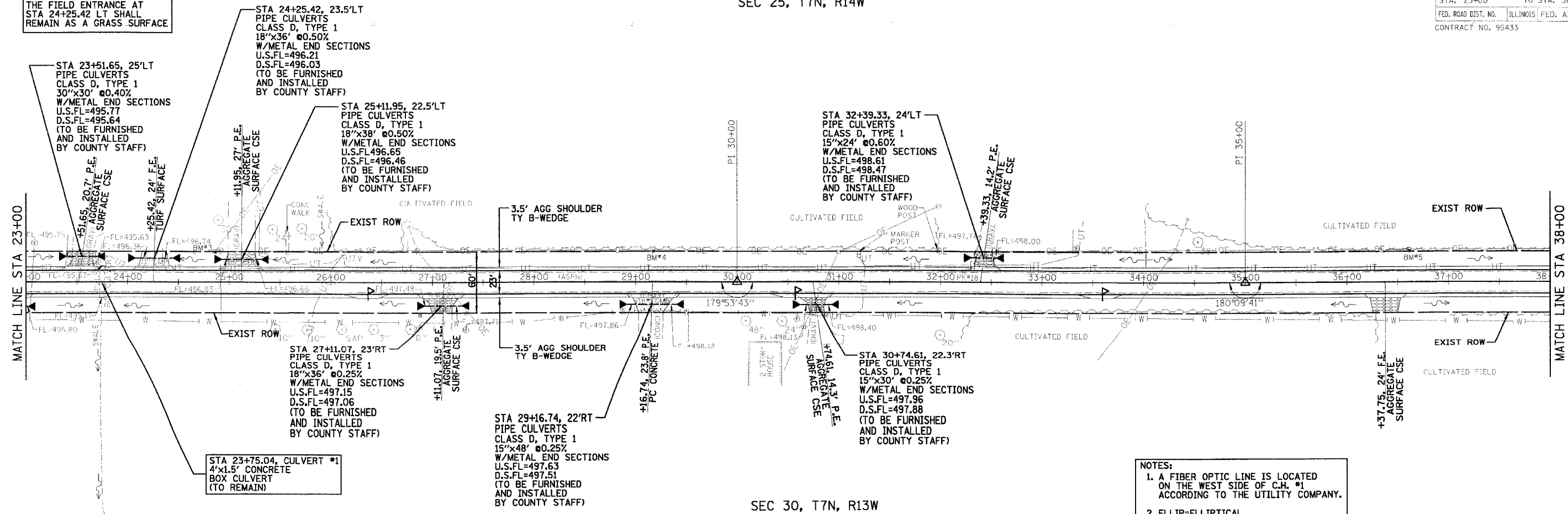


SEC 25, T7N, R14W

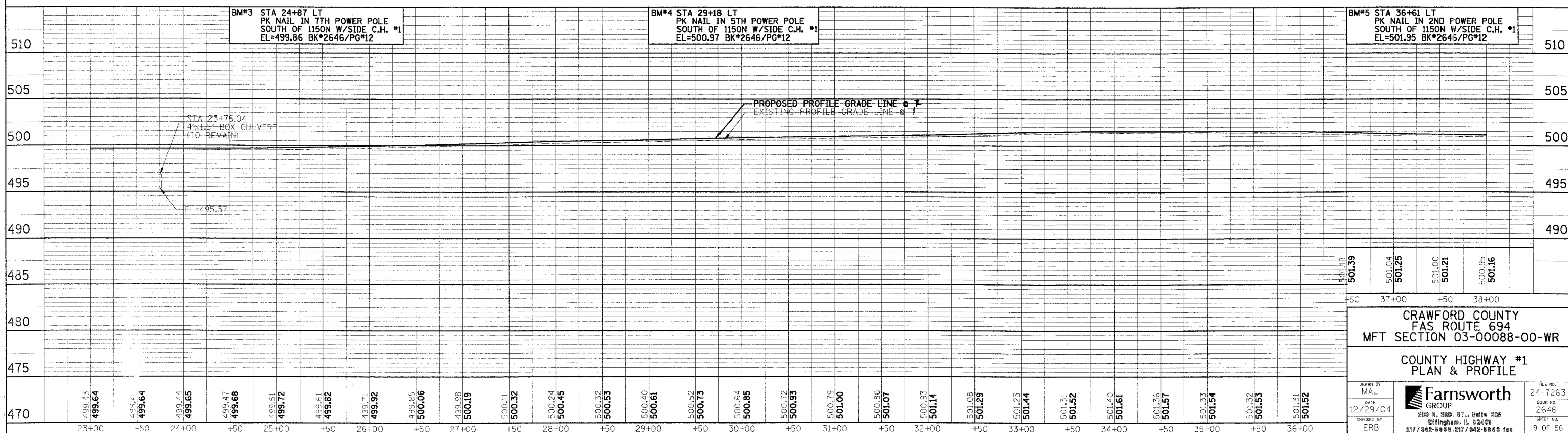
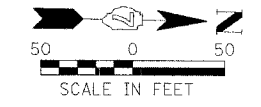
NOTE:
THE FIELD ENTRANCE AT STA 24+25.42 LT SHALL REMAIN AS A GRASS SURFACE



SEC 30, T7N, R13W

COUNTY HIGHWAY #1 (200E)

- NOTES:
- A FIBER OPTIC LINE IS LOCATED ON THE WEST SIDE OF C.H. #1 ACCORDING TO THE UTILITY COMPANY.
 - ELLIP=ELLIPTICAL
ERS=EQUIVALENT ROUND SIZE
PRC=PRECAST REINFORCED CONCRETE
FES=FLARED END SECTIONS
 - SEE CROSS SECTIONS FOR LOCATIONS WHERE THE CONTRACTOR SHALL GRADE DITCHES.



BM#3 STA 24+87 LT
PK NAIL IN 7TH POWER POLE
SOUTH OF 1150N W/SIDE C.H. #1
EL=499.86 BK#2646/PG#12

BM#4 STA 29+18 LT
PK NAIL IN 5TH POWER POLE
SOUTH OF 1150N W/SIDE C.H. #1
EL=500.97 BK#2646/PG#12

BM#5 STA 36+61 LT
PK NAIL IN 2ND POWER POLE
SOUTH OF 1150N W/SIDE C.H. #1
EL=501.95 BK#2646/PG#12

STA 23+75.04
4'x1.5' BOX CULVERT
(TO REMAIN)

PROPOSED PROFILE GRADE LINE
EXISTING PROFILE GRADE LINE

501.18	501.39	501.04	501.25	501.00	501.21	500.95	501.16
-50	37+00	+50	38+00				

CRAWFORD COUNTY
FAS ROUTE 694
MFT SECTION 03-00088-00-WR

COUNTY HIGHWAY #1
PLAN & PROFILE

DRAWN BY MAL DATE 12/29/04 CHECKED BY ERB	Farnsworth GROUP 200 N. 3RD. ST., Suite 206 Birmingham, IL 62401 217/942-6888, 217/942-8888 fax	FILE NO. 24-7263 BOOK NO. 2646 SHEET NO. 9 OF 56
--	---	---