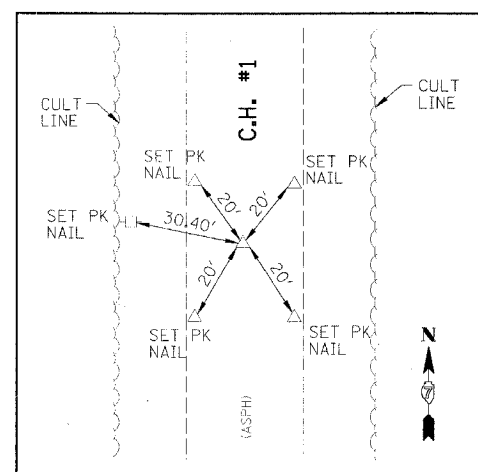
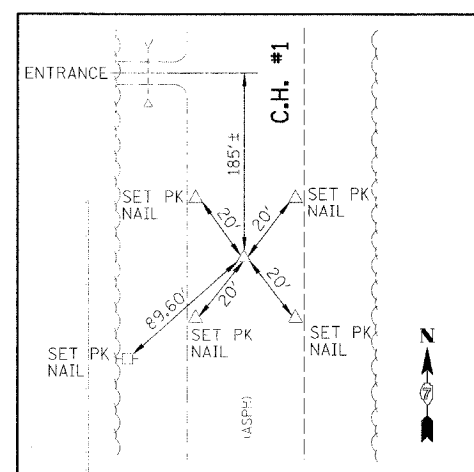


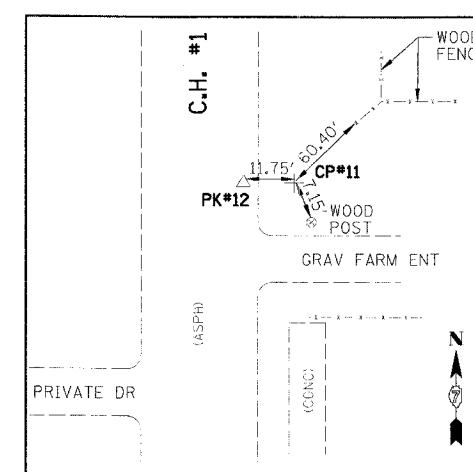
STA 10+00 (PI)
SPINDLE



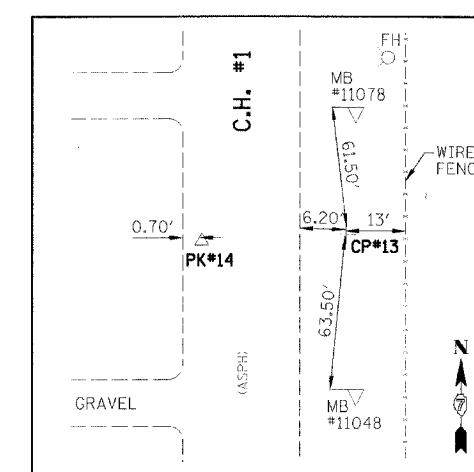
STA 60+00 (PI)
PK NAIL



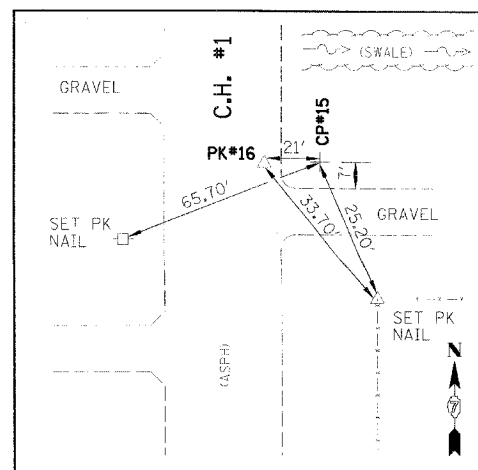
STA 123+00 (PI)
PK NAIL



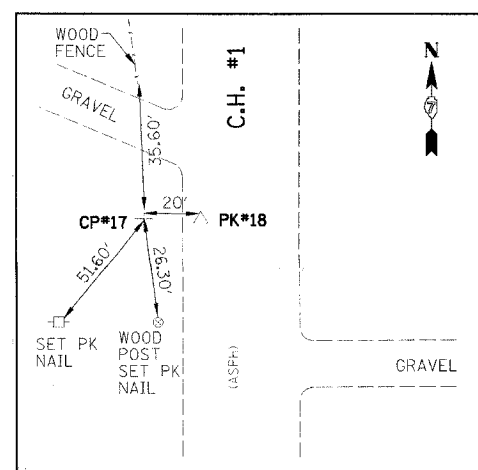
STA 9+51
CP#11 (IR) & PK#12



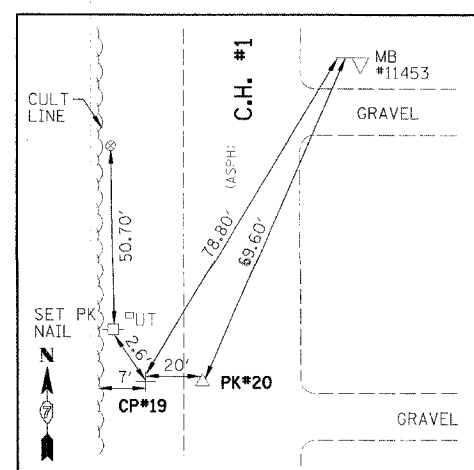
STA 17+07
CP#13 (IR) & PK#14



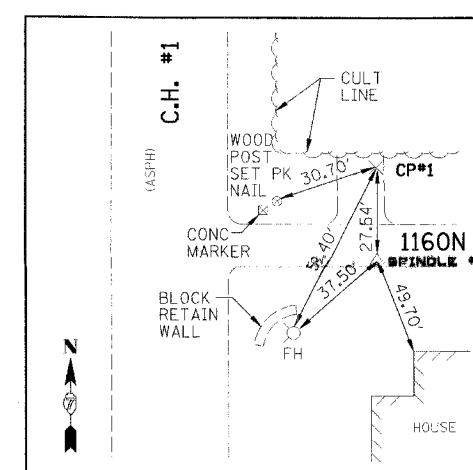
STA 22+99
CP#15 (IR) & PK#16



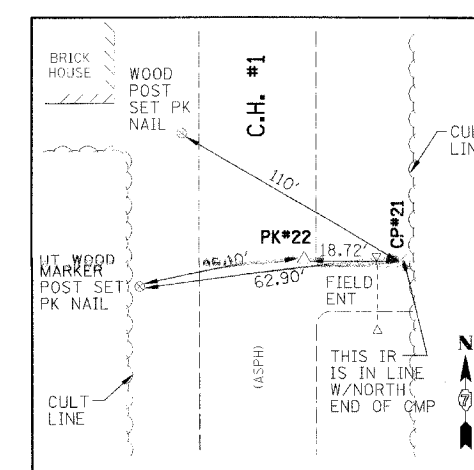
STA 32+24
CP#17 (IR) & PK#18



STA 46+10
CP#19 (IR) & PK#20



BASE STATION
CP#1 (IR), CPS #2 & SPINDLE #2



STA 65+37
CP#21 (IR) & PK#22

LEGEND
 PI =POINT OF INFLECTION
 CULT =CULTIVATION
 CP =CONTROL POINT
 IR =IRON ROD

CRAWFORD COUNTY
 FAS ROUTE 694
 MFT SECTION 03-00088-00-WR

CONTROL & SURVEY TIES

DRAWN BY MAL	 300 N. 209. ST., Suite 206 Effingham, IL 62401 217/348-8888, 217/348-8888 fax	FILE NO. 24-7263
DATE 12/29/04		BOOK NO. 2646
CHECKED BY ERB		SHEET NO. 6 OF 56