



DESIGN RESOURCES INC.

CIVIL ENGINEERING AND LAND SURVEYING

1475 S. PERRYVILLE ROAD
ROCKFORD, ILLINOIS 61108
(815) 484-4300
(815) 484-4303 FAX

PROJECT NAME
OWNER'S NAME

**MULFORD RD./
RIVERSIDE BLVD
INTERSECTION**
03-00334-00-8P

WINNEBAGO COUNTY
HIGHWAY DEPARTMENT
424 N SPRINGFIELD AVENUE
ROCKFORD, IL 61101
(815) 965-9431

CONSULTANTS

SEAL / SIGNATURE

ISSUED FOR	DATE
AGENCY REVIEW	03.04.05
AGENCY REVIEW	05.18.05

REVISIONS

NO.	ITEM	DATE

DRAWN MWT
CHECKED JTS

PROJECT NUMBER

04227

SHEET TITLE

**QUANTITIES,
DETAILS, AND
WALL
PROFILES**

SHEET NUMBER

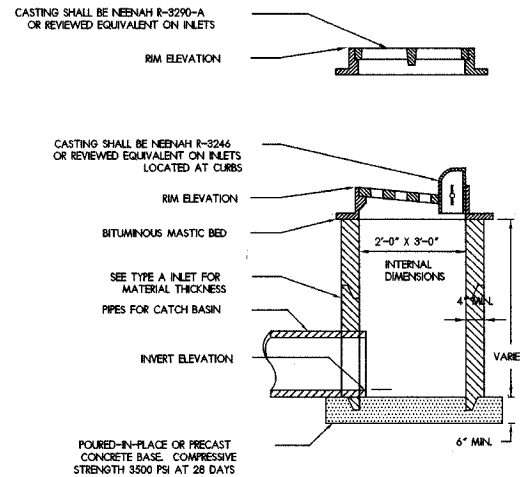
3 of x

SUMMARY OF QUANTITIES

J000-2A

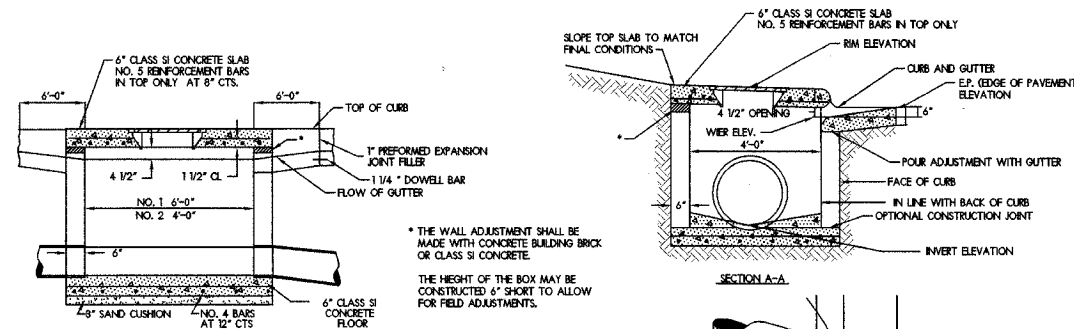
20100110	TREE REMOVAL (6 TO 15 UNITS DIAMETER)	UNIT	32
20100700	TREE REMOVAL (UNDER 6 INCH DIAMETER)	IN DIA	8
20200100	EARTH EXCAVATION	CU YD	800
25200100	SODDING	SQ YD	1100
25200200	SUPPLEMENTAL WATERING	UNIT	20
28000400	PERIMETER EROSION BARRIER	FOOT	850
28000500	INLET AND PIPE PROTECTION	EACH	8
31101200	SUB-BASE GRANULAR MATERIAL, TYPE B 4"	SQ YD	1510
35102400	AGGREGATE BASE COURSE, TYPE B, 12"	SQ YD	250
40600100	BITUMINOUS MATERIALS (PRIME COAT)	GAL	75
X4066614	BITUMINOUS CONCRETE BINDER COURSE, SUPERPAVE, IL-PA, N50	TON	25
X40666424	BITUMINOUS CONCRETE SURFACE COURSE, SUPERPAVE, MIX "D", N50	TON	25
42000300	PORTLAND CEMENT CONCRETE PAVEMENT 8"	SQ YD	1125
42400100	PORTLAND CEMENT CONCRETE SIDEWALK 4 INCH	SQ FT	460
44000100	PAVEMENT REMOVAL	SQ YD	275
44000200	DRIVEWAY PAVEMENT REMOVAL	SQ YD	410
44000500	COMBINATION CURB AND GUTTER REMOVAL	FOOT	1250
44000600	SIDEWALK REMOVAL	SQ FT	495
50100100	REMOVAL OF EXISTING STRUCTURES	EACH	1
55100200	STORM SEWER REMOVAL 6"	FOOT	6
55100500	STORM SEWER REMOVAL 12"	FOOT	11
60262900	INLETS TO BE RECONSTRUCTED WITH NEW TYPE 1 FRAME, OPEN LID	EACH	2
60603800	COMBINATION CONCRETE CURB AND GUTTER, TYPE B-6.12	FOOT	240
60605000	COMBINATION CONCRETE CURB AND GUTTER, TYPE B-6.24	FOOT	915
70103700	TRAFFIC CONTROL COMPLETE	LSUM	1
* 78001100	PAINT PAVEMENT MARKING - LETTERS AND SYMBOLS	SQ FT	177
* 78001130	PAINT PAVEMENT MARKING - LINE 6"	FOOT	750
* 78001180	PAINT PAVEMENT MARKING - LINE 24"	FOOT	40
* 87301255	ELECTRIC CABLE IN CONDUIT, SIGNAL NO. 14 7C	FOOT	1062
* 89502200	MODIFY EXISTING CONTROLLER	EACH	1
X0323144	MODULAR SEGMENTAL BLOCK RETAINING WALL	SQ FT	210
* X8801395	SIGNAL HEAD, POLYCARBONATE, LED, 1-FACE, 5-SECTION, BRACKET MOUNTED	EACH	4
XX000968	INLET TYPE 700	EACH	3
XX005067	PORTLAND CEMENT CONCRETE DRIVEWAY PAVEMENT 8" (HIGH EARLY CONCRETE)	SQ YD	324
60242600	INLET SPECIAL NO. 2	EACH	1
XX006347	STORM MANHOLE TYPE A - 3' DIA. W/MEDIAN DRAIN FR & GR W/ FLAT SLAB TOP	EACH	1
42400800	DETECTABLE WARNING	SQ FT	80
67100100	MOBILIZATION	LSUM	1
XX004007	BITUMINOUS DRIVEWAY PAVEMENT	SQ YD	160
XX006356	RECONSTRUCT INLET SPECIAL NO. 1	EACH	1

* SPECIALTY ITEMS



1 INLET 700

NO SCALE



NOTES

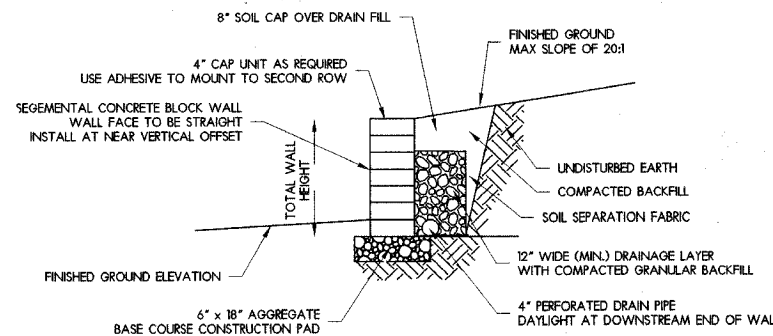
THE INLET SHALL BE CAST IN PLACE OR PRECAST, EXCEPT AS NOTED HEREON INLET SPECIAL NO. 8 SHALL BE CONSTRUCTED IN ACCORDANCE WITH SECTION 602 OF THE STANDARD SPECIFICATIONS.

THE CONTRACT UNIT PRICE EACH FOR INLET SPECIAL NO. 3 SHALL INCLUDE THE COST OF REINFORCEMENT BARS, FLOOR AND TOP SLABS, FINISHING AND INSTALLING THE FRAME, LID, THE CURB AND GUTTER WILL BE PAID FOR SEPARATELY AND WILL BE MEASURED THROUGH THE INLET.

THE CURB AND GUTTER ADJACENT TO AND 6 FT. ON EITHER SIDE OF THE INLET SHALL BE CONSTRUCTED AS SHOWN WITH NO ADDITIONAL COMPENSATION FOR THE TRANSITION.

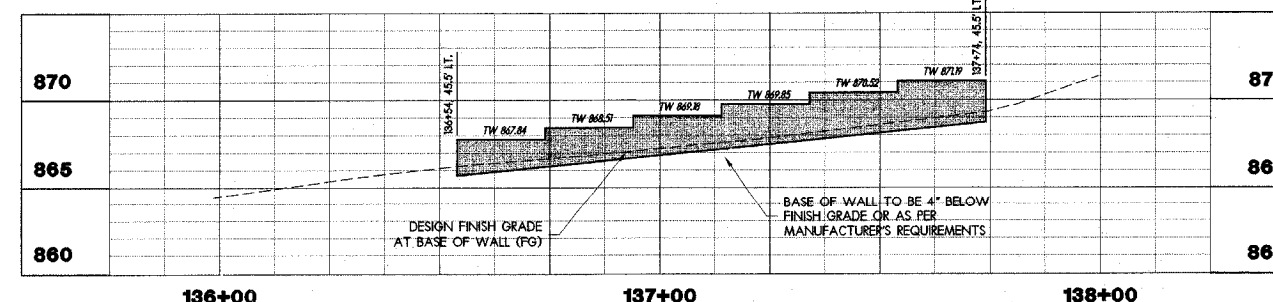
1A INLET SPECIAL NO. 2

NO SCALE



2 MODULAR BLOCK RETAINING WALL

NO SCALE



3 DETAIL OF SEGMENTAL CONCRETE BLOCK WALLS

SCALE: 1" = 20' HORIZONTAL
1" = 5' VERTICAL