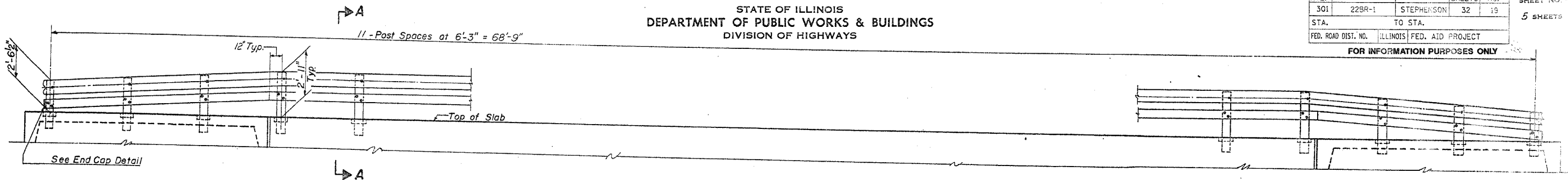


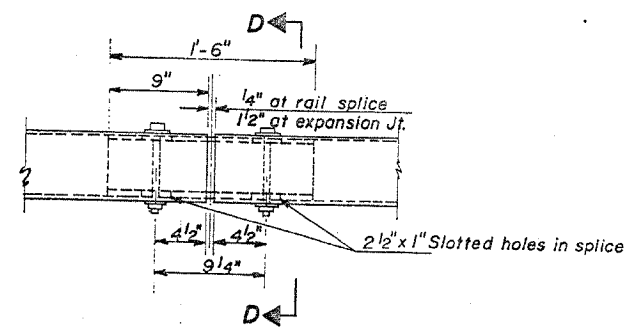
STATE OF ILLINOIS
DEPARTMENT OF PUBLIC WORKS & BUILDINGS
DIVISION OF HIGHWAYS

CONTRACT NO. 64B04				
F.A.P. RTE.	SECTION	COUNTY	TOTAL SHEETS	SHEET NO.
301	22BR-1	STEPHENSON	32	19
STA.		TO STA.		
FED. ROAD DIST. NO.		ILLINOIS FED. AID PROJECT		

FOR INFORMATION PURPOSES ONLY



ELEVATION
Showing inside face of railing



RAIL SPLICE

NOTES

Hollow structural steel tubing shall conform to the requirements of ASTM designation A 501 "Hot Formed Welded and Seamless Carbon Steel Structural Tubing". All other steel shapes and plates shall conform to the requirements of ASTM designation A 441 or A 36.

Bolting materials, bolts, cap screws, and nuts shall conform to the requirement of ASTM designation A 307.

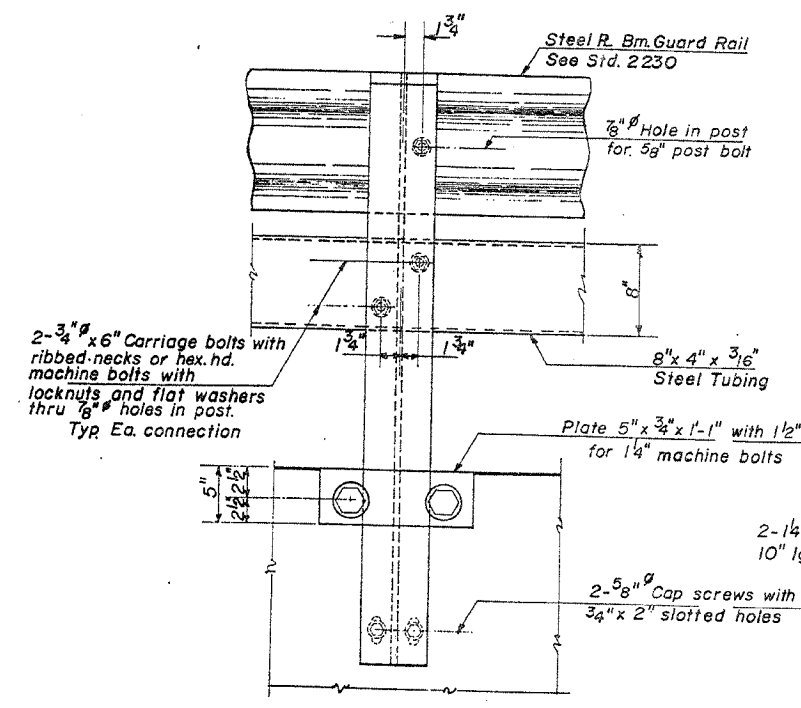
All bolts, nuts, cap screws, washers, and lock washers shall be galvanized in accordance with ASTM designation A-153.

All posts, railing, and rail splices shall be galv. after shop fabrication in accordance with ASTM designation A-123 and A-385.

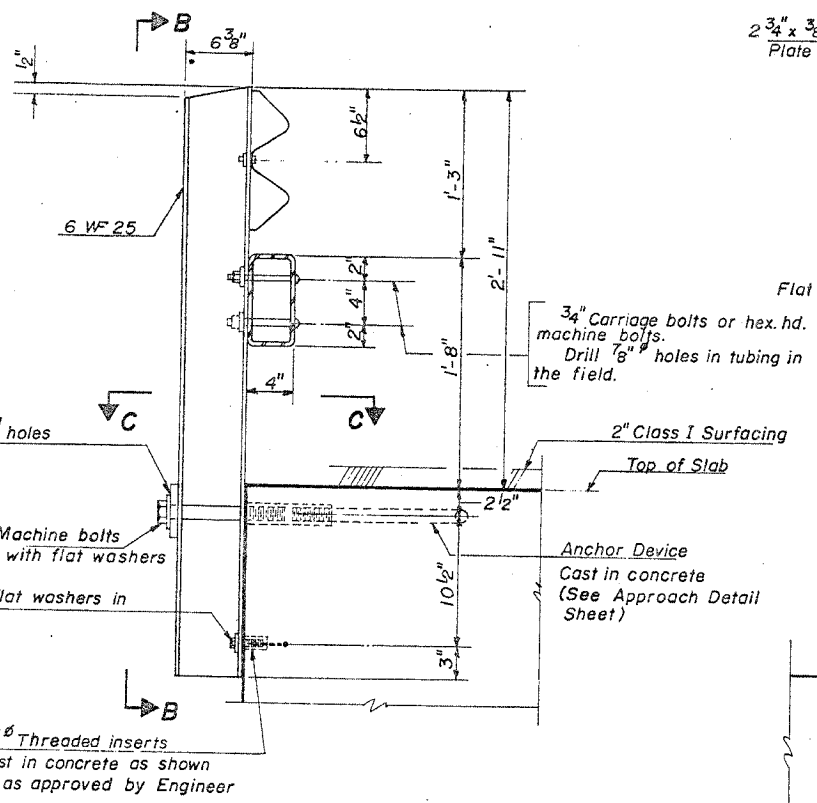
Railing shall be in accordance with Section 508 of the Standard Specifications, except as noted, and shall be paid for at the contract unit price per lineal foot for STEEL RAILING, TYPE W.

All field drilled holes shall be coated with an approved zinc rich paint before erection.

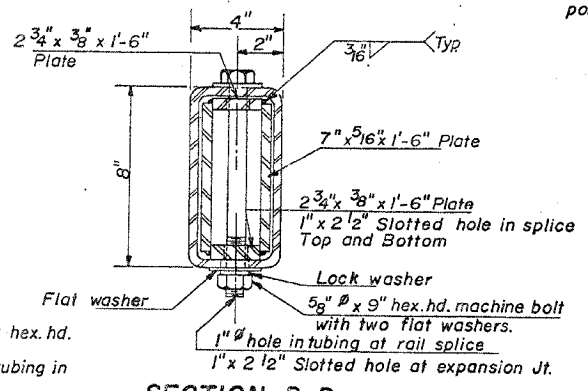
The lower portion of the post flange in contact with concrete shall receive two coats of asphalt paint conforming to Section 714.08 Type B or place 1/2" fabric bearing pad between the post and concrete.



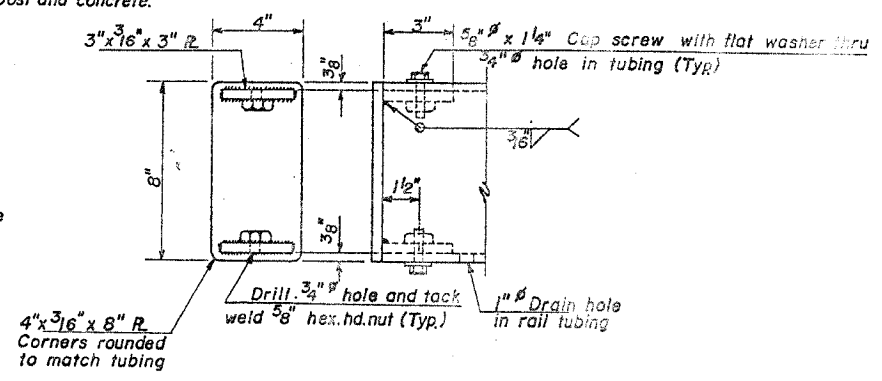
VIEW B-B



SECTION A-A

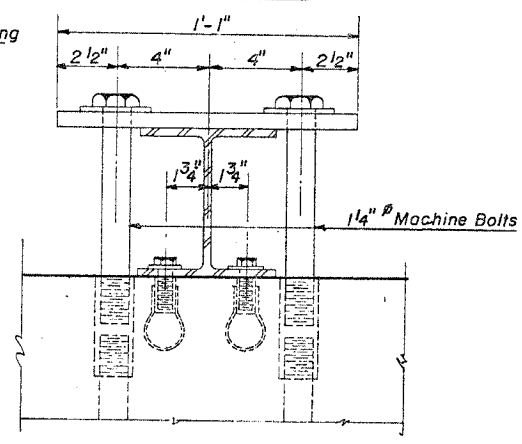


SECTION D-D



END CAP DETAIL

4 - Required



SECTION C-C

BILL OF MATERIAL

Item	Unit	Quantity
STEEL RAILING, TYPE W	Lin. Ft.	138

**TYPE W
STEEL RAILING**

S.B.I. RT. 5 SEC. 22 BR
STEPHENSON COUNTY
STA. 391 + 45

DESIGNED	James Pence	EXAMINED	Aug. 8 1969
CHECKED	Jack Armstrong	PASSED	W. P. Baumann
DRAWN	A. Barraza	APPROVED	Richard H. Goltzman
CHECKED	JP		