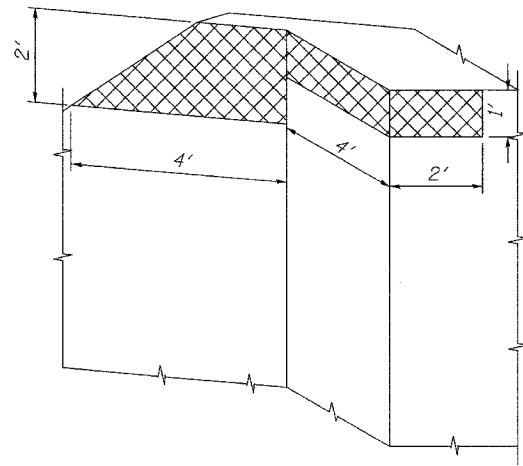


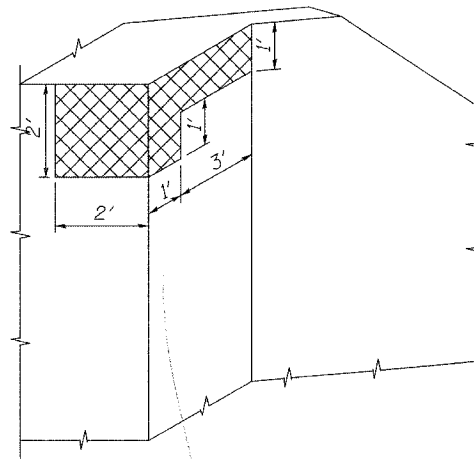
STATE OF ILLINOIS
DEPARTMENT OF TRANSPORTATION

ROUTE NO.	SECTION	COUNTY	TOTAL SHEETS	SHEET NO.	SHEET NO. 5
F.A.P. 301	*	Stephenson	x	15	5 SHEETS
FED. ROAD DIST. NO. 7	ILLINOIS	FED. AID PROJECT-			

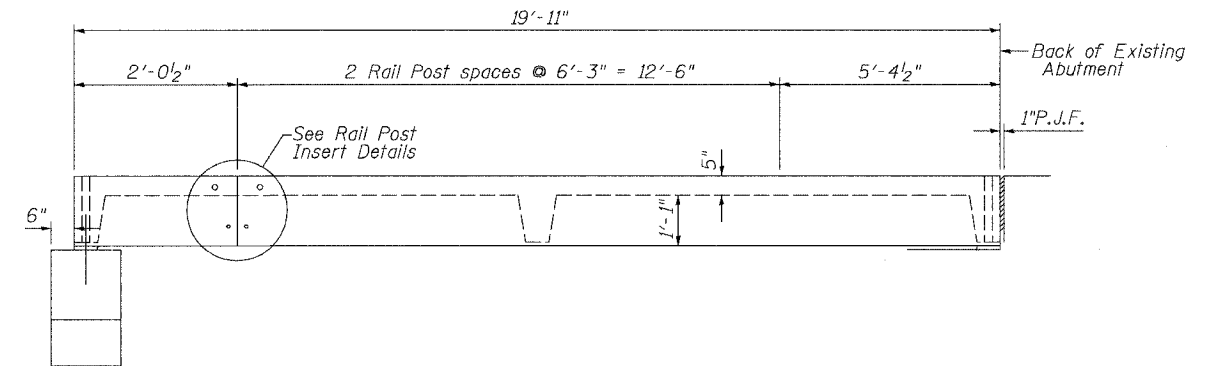
* Section 22 BR-1 Contract #64B04



N.E. ABUTMENT CORNER ELEV.

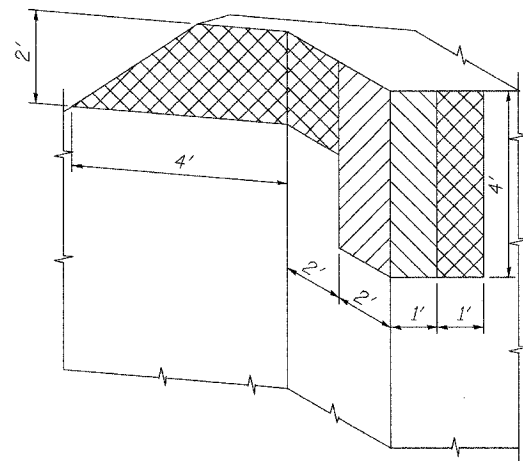


S.E. ABUTMENT CORNER ELEV.

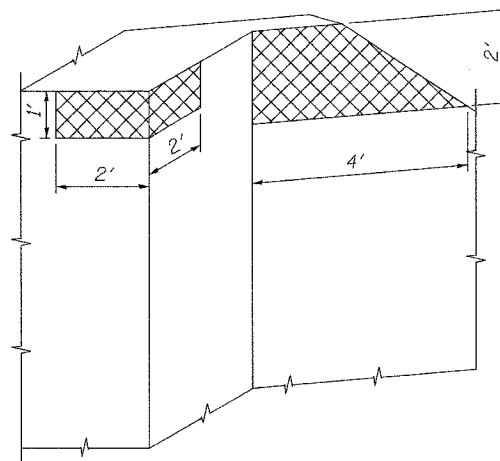


EXISTING APPROACH SLAB SIDE ELEVATION

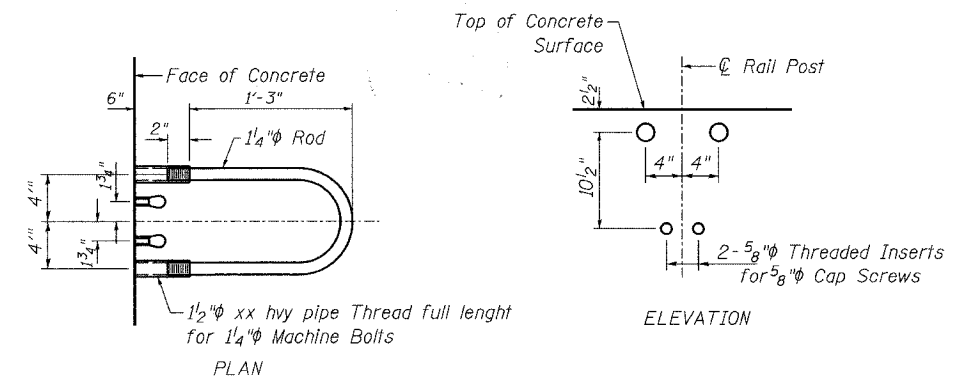
(For Information Only)



S.W. ABUTMENT CORNER ELEV.



N.W. ABUTMENT CORNER ELEV.



EXISTING APPROACH SLAB
RAIL POST INSERT DETAILS

(For Information Only)

DESIGNED	SB, DP
CHECKED	SB
DRAWN	BH, BS
CHECKED	SB



BILL OF MATERIAL

ITEM	UNIT	TOTAL
Formed Concrete Repair (Depth Equal to or Less Than 5 Inches)	Sq. Ft.	45
Formed Concrete Repair (Depth Greater Than 5 Inches)	Sq. Ft.	12

CONCRETE REPAIR DETAILS
F.A.P. 301 (U.S. 20)
OVER YELLOW CREEK
SECTION 22BR-1
STEPHENSON COUNTY
STR. NO. 089-0002