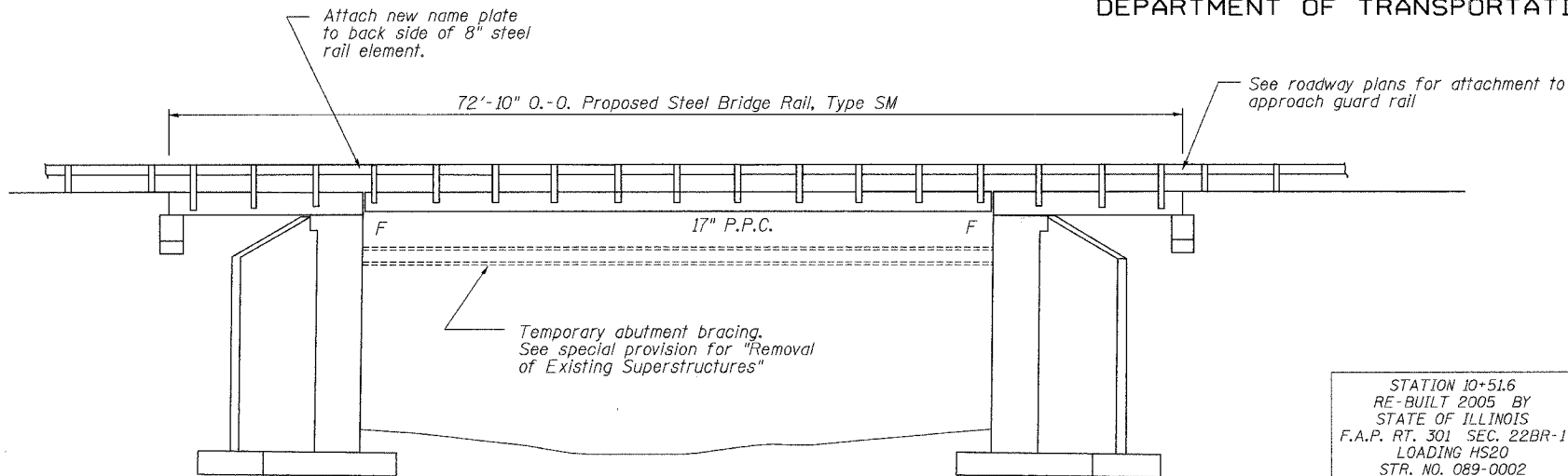


STATE OF ILLINOIS
DEPARTMENT OF TRANSPORTATION

ROUTE NO.	SECTION	COUNTY	TOTAL SHEETS	SHEET NO.
F.A.P. 301	*	Stephenson	x	1
SHEET NO. 1 OF 5 SHEETS				
* Section 22 BR-1			Contract #64B04	

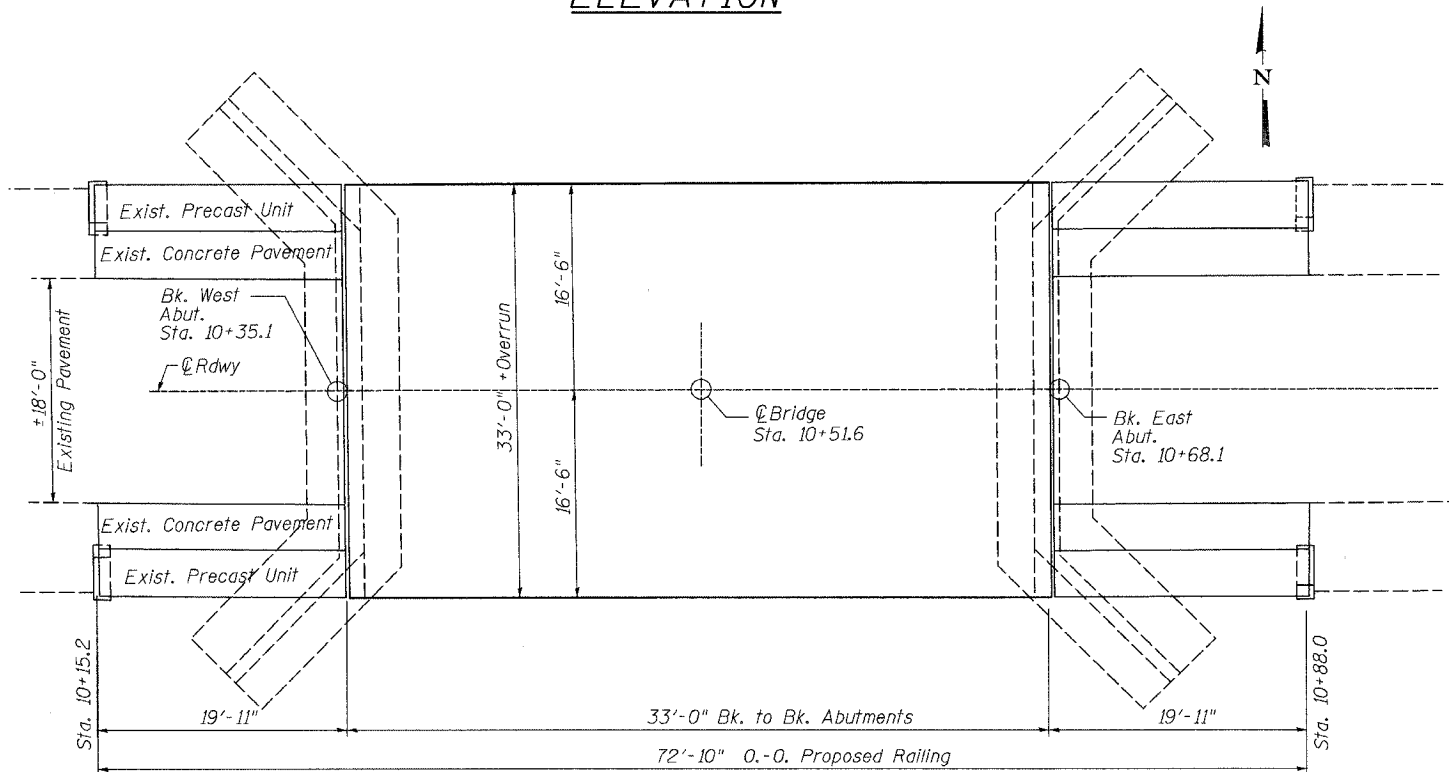


ELEVATION

STATION 10+51.6
RE-BUILT 2005 BY
STATE OF ILLINOIS
F.A.P. RT. 301 SEC. 22BR-1
LOADING HS20
STR. NO. 089-0002

LETTERING FOR NAME PLATE

SEE STD. 515001



PLAN

WENDLER ENGINEERING SERVICES, INC.
Illinois Professional Design
Firm No. 184-000848
Bridge plan sheets
1 thru 5 Only

SCOTT A. BROWN
081-005981
STATE OF ILLINOIS

Scott A. Brown
DATE

SCOTT A. BROWN
DIXON, ILLINOIS
ILLINOIS LICENSED STRUCTURAL
ENGINEER NO. 081-005981
EXPIRES 11-30-2006

GENERAL NOTES

Reinforcement bars shall conform to the requirements of AASHTO M-31, or M-322, Grade 60.

Plan dimensions and details relative to existing structure have been taken from existing plans and are subject to nominal construction variations. It shall be the Contractor's responsibility to verify such dimensions and details in the field and make necessary approved adjustments prior to construction or ordering of materials. Such variations shall not be cause for additional compensation for a change in the scope of work; however, the Contractor will be paid for the quantity actually furnished at the unit price bid for the work.

Existing structure construction plans and subsequent repair plans are available from the IDOT District office by written request. The contractor shall be responsible for obtaining and reviewing the plans prior to construction.

The minimum thickness of the Concrete overlay shall be 5" and varies as required to adjust for the new profile grade and beam camber.

A concrete sealer meeting the requirements of Section 587 of the Standard Specifications shall be applied to the fascia deck beam on the side exposed to view, and the adjacent side underneath for a distance extending 9 in. Cost included with PPC Deck Beams (17").

The exposed strands at each deck beam end shall be given two coats of zinc dust spray or paint according to the manufacturer's specifications and meeting the requirements of ASTM A780. Cost included with PPC Deck Beams (17").

All construction joints shall be bonded.

No instream work will be allowed on this project.

The contractor is advised that the existing PPC Deck Beams are in a deteriorated condition with reduced load carrying capacity. It is the contractor's responsibility to account for the condition of the beams when developing construction procedures for removal and replacement of the superstructure.

The contractor is advised that due to the lack of vertical reinforcement in the back of the abutment walls a temporary bracing system must be provided prior to the removal of the existing PPC deck beams in order to ensure stability of the abutments. The details must be submitted to the Engineer for his approval. Cost to be included with Removal of Existing Superstructures. (See Special Provisions)

TOTAL BILL OF MATERIAL

ITEM	UNIT	TOTAL
Removal of Existing Superstructures	Each	1
Bridge Deck Grooving	Sq Yd	114
Concrete Wearing Surface	Sq Yd	115
Precast Prestressed Concrete Deck Beams (17" Depth)	Sq. Ft.	1084
Reinforcement Bars, Epoxy Coated	Pound	1400
Steel Bridge Rail, Type SM	Foot	146
Formed Concrete Repair (Depth Equal to or Less Than 5 Inches)	Sq. Ft.	45
Formed Concrete Repair (Depth Greater Than 5 Inches)	Sq. Ft.	12
Name Plates	Each	1

LOADING HS20-44 (New Construction)

NO ALLOWANCE FOR FUTURE WEARING SURFACE

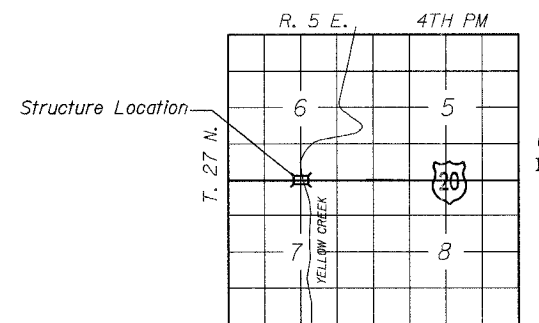
DESIGN SPECIFICATIONS (New Construction)

2002 AASHTO

DESIGN STRESSES

FIELD UNITS	PRECAST PRESTRESSED UNITS
$f'_c = 3,500$ p.s.i.	$f'_c = 5,000$ p.s.i.
$f_y = 60,000$ p.s.i. (Reinforcement)	$f'_{ci} = 4,000$ p.s.i.
	$f'_s = 270,000$ p.s.i. (1/2" Low Lax Strands)
	$f'_{si} = 201,960$ p.s.i. (1/2" Low Lax Strands)

DESIGNED	SB
CHECKED	RB
DRAWN	DB, BS
CHECKED	SB



LOCATION SKETCH

GENERAL PLAN AND ELEVATION
F.A.P. 301 (U.S. 20)
OVER YELLOW CREEK
SECTION 22BR-1
STEPHENSON COUNTY
STR. NO. 089-0002