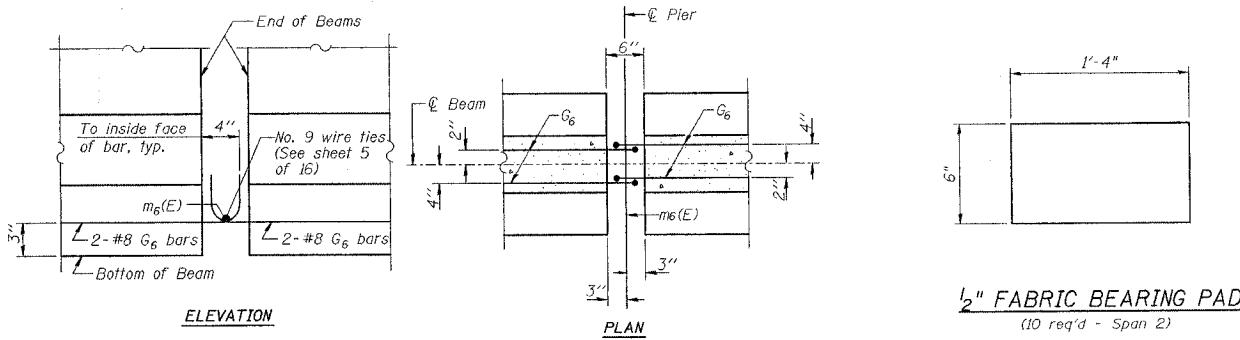
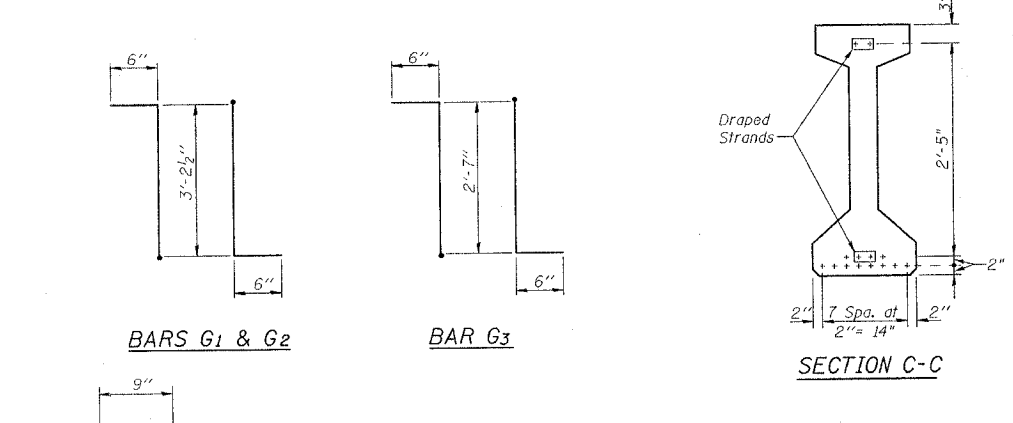
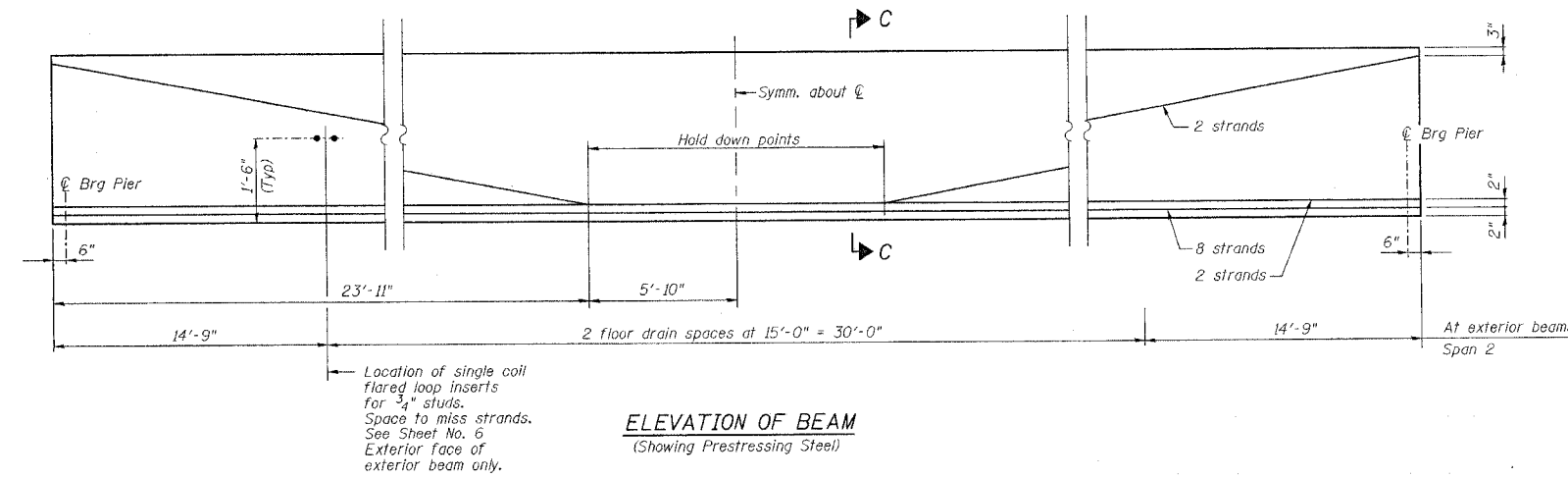
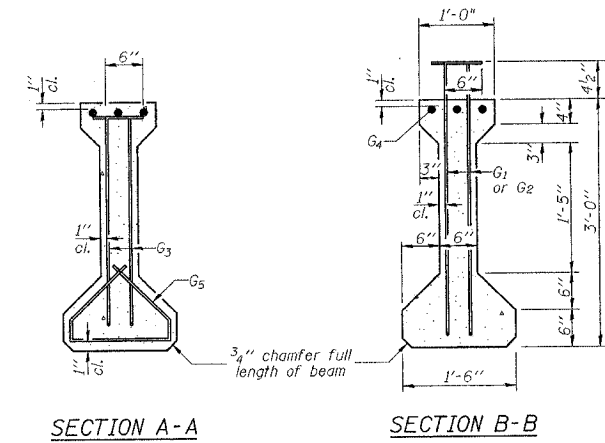
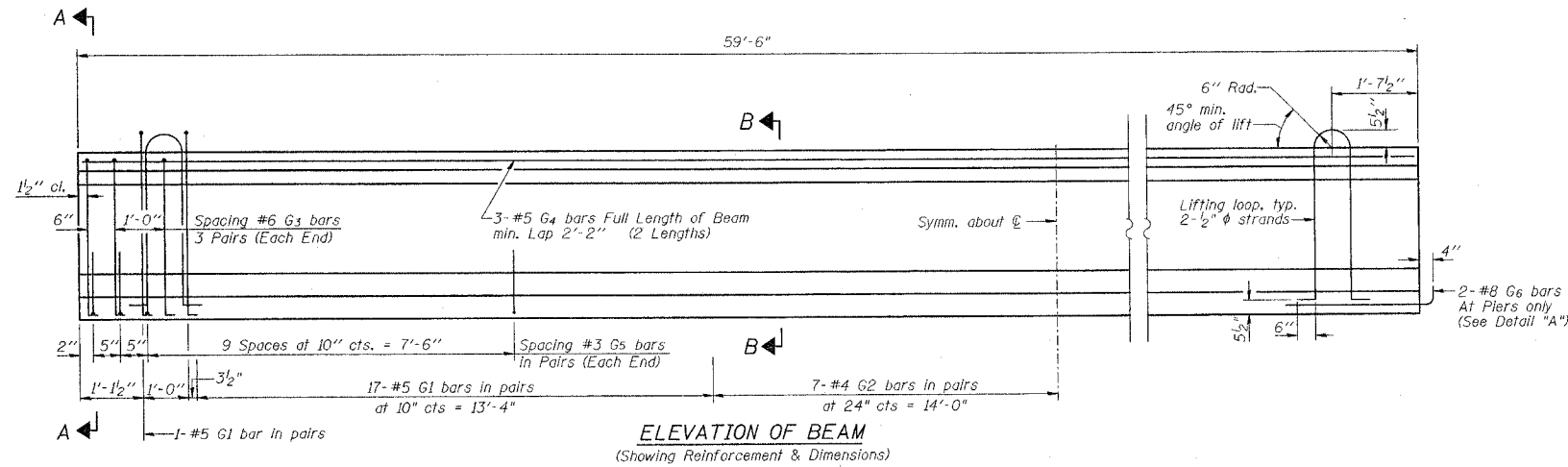


STATE OF ILLINOIS
DEPARTMENT OF TRANSPORTATION

Sheet No. 8
of 16 Sheets

ROUTE NO.	SECTION	COUNTY	TOTAL SHEETS	SHEET NO.
SBI 88	103C-BR	BUREAU	51	19
FED. ROAD DIST. NO.	ILLINOIS	PROJECT	CONTRACT #64423	



1/2" FABRIC BEARING PAD
(10 req'd - Span 2)

***BAR LIST**

Bar	No.	Size	Length	Shape
G1	72	#5	4'-2 1/2"	TL
G2	28	#4	4'-2 1/2"	TL
G3	12	#6	3'-7"	TL
G4	6	#5	30'-9"	—
G5	48	#3	2'-7"	—
G6	4	#8	3'-6"	—

*For one beam only.

BILL OF MATERIAL

Item	Unit	Total
Furnishing and Erecting Precast Prestressed Concrete I-Beams, 36'	Fl.	297.5

NOTES

Inserts for 3/4" ϕ threaded dowel rods are to be two strut, coil type for interior I-Beams and single coil, flared loop type for exterior I-Beams. Prestressing steel shall be uncoated high strength, low relaxation 7-wire strand, Grade 270. The nominal diameter shall be 1/2" and the nominal cross-sectional area shall be 0.153 sq. in. Non-prestressing steel shall conform to AASHTO designation M-31 or M-322 Grade 60. Lifting loops shall be 2-1/2" ϕ 270 ksi strands, as shown. Required release strength, f'cl, shall be 5000 psi. Reinforcement bars designated (E) shall be epoxy coated. See Sheet No. 2 for moment tables.

NEW BEDFORD ROAD OVER GREEN RIVER

BEAM DETAILS - SPAN 2

REVISIONS	STATE OF ILLINOIS DEPARTMENT OF TRANSPORTATION DIVISION OF HIGHWAYS	DRAWN BY DATE R King 4/04
1	SBI 88 SPUR	CHECKED BY DATE CMV 4/04
2	SECTION 103C-BR	QA/QC BY DATE CWC 4/04
3	SN 006-0163	BOOK NUMBER
4	STA 29+25.34	BUREAU COUNTY
5	HOMER L. CHASTAIN & ASSOCIATES, LLP	PROJECT NO. 4858-1
6	CONSULTING ENGINEERS	SHEET NO.
7	184-001397	