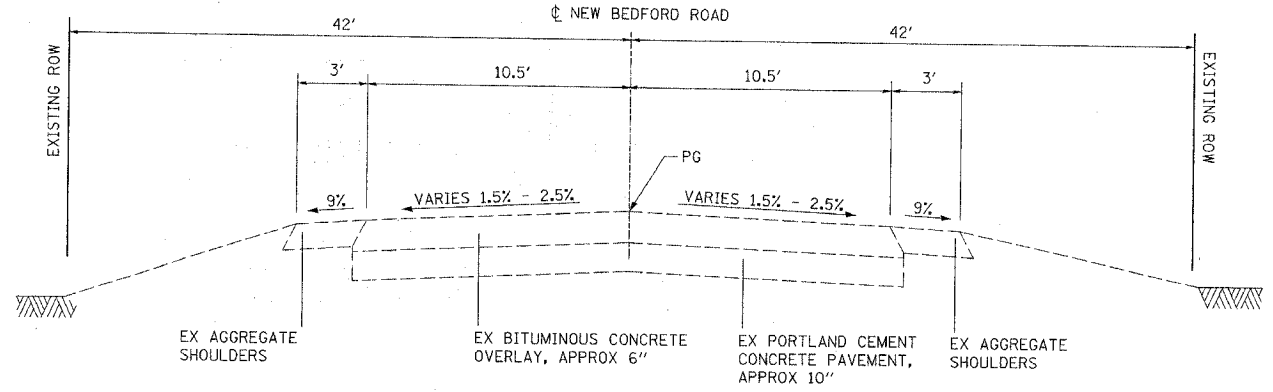


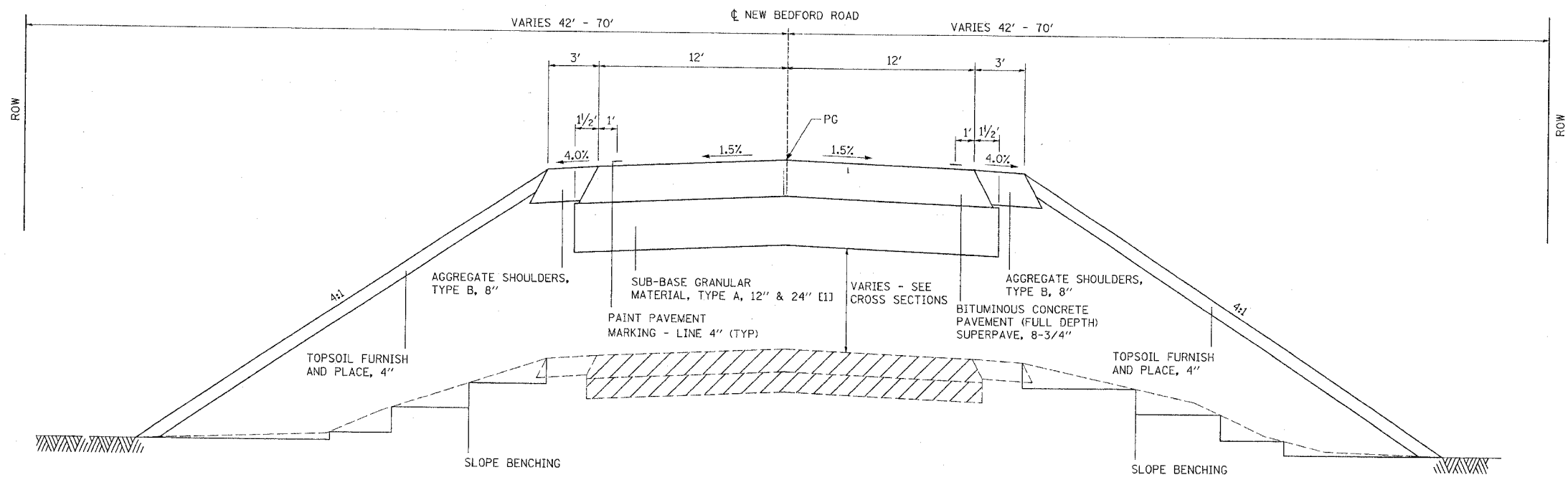
64423

SBI	SECTION	COUNTY	TOTAL SHEETS	SHEET NO.
88	103C-BR	BUREAU	51	3
STA. 19+00		TO STA. 39+00		
EXISTING CONDITIONS:				



EXISTING TYPICAL ROADWAY SECTION

STA 19+00.0 TO STA 28+66.5
 STA 28+66.5 TO STA 29+84.1 BRIDGE OMISSION
 STA 29+84.1 TO STA 39+00.0




PROPOSED TYPICAL ROADWAY SECTION

STA 19+00.00 RT TO STA 26+54.09 RT
 STA 19+00.00 LT TO STA 26+79.09 LT
 STA 31+71.94 RT TO STA 39+00.00 RT
 STA 31+97.09 LT TO STA 39+00.00 LT

APPLICATION RATES

AGGREGATE SHOULDERS, TYPE B	2.05 TONS/CU YD
AGGREGATE SURFACE COURSE, TYPE B	2.05 TONS/CU YD
SUB-BASE GRANULAR MATERIAL, TYPE A	2.05 TONS/CU YD
BITUMINOUS CONCRETE BINDER COURSE	115 LBS/SQ YD IN
BITUMINOUS CONCRETE SURFACE COURSE	112 LBS/SQ YD IN
INCIDENTAL BITUMINOUS SURFACING	112 LBS/SQ YD IN

 PAVEMENT REMOVAL - STA 19+00.00 TO 22+50.00
 STA 28+30.00 TO 28+66.55
 STA 29+84.10 TO 30+20.00
 STA 35+50.00 TO 39+00.00

PAVEMENT BREAKING - STA 22+50.00 TO 28+30.00
 STA 30+20.00 TO 35+50.00

NOTE:

- BITUMINOUS CONCRETE PAVEMENT (FULL DEPTH), SUPERPAVE 8-3/4" CONSISTS OF BITUMINOUS CONCRETE SURFACE COURSE, SUPERPAVE, MIX "C", N50 2" AND BITUMINOUS CONCRETE BINDER COURSE, SUPERPAVE, IL-19.0, N50 6-3/4"
- EXISTING SLOPES SHALL BE BENCHED AS SHOWN. DEEP BENCHING IS REQUIRED TO INSURE THE REMOVAL OF UNSTABLE SLOPE MATERIAL FROM THE SLOPE FAILURE PLANE. EXCAVATED MATERIALS AS A RESULT OF BENCHING SHALL BE USED IN EMBANKMENT. THE COST OF BENCHING SHALL NOT BE PAID FOR SEPARATELY, BUT SHALL BE INCLUDED IN THE COST OF THE VARIOUS EARTHWORK PAY ITEMS.

REVISIONS	
NAME	DATE

ILLINOIS DEPARTMENT OF TRANSPORTATION
 SBI 88 (NEW BEDFORD ROAD)
 SECTION 103C-BR
 BUREAU COUNTY

TYPICAL SECTIONS

DRAWN BY: HLC

DATE	
REVISED	
APPROVED	
ALIGNED	
CHECKED	
NO.	
FILE NAME	

8/12/2004
 8:08:05 AM
 D05699TYP.dgn