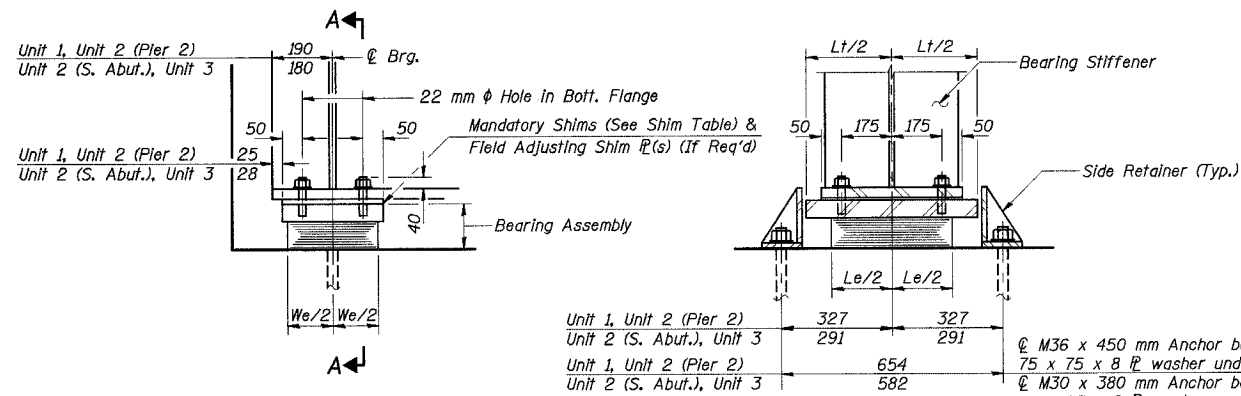


STATE OF ILLINOIS  
DEPARTMENT OF TRANSPORTATION

ROUTE NO.	SECTION	COUNTY	TOTAL SHEETS	SHEET NO.	SHEET NO. 37
F. A. 1-80/94		COOK	90	52	42 SHEETS
FED. ROAD DIST. NO. 1		ILLINOIS	FED. AID PROJECT-		
2004-133F		CONTRACT NO. 62898			



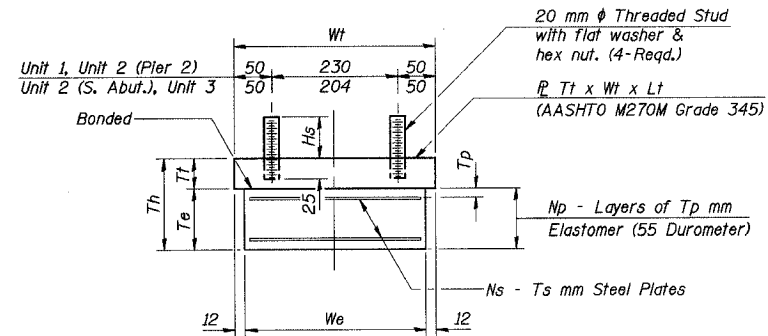
**ELEVATION AT S. ABUT., ABUT. F & PIER 2**

(Looking West)  
(Bearings at Abutments shown, Bearings at Piers similar)

**SECTION A-A**

**TYPE I ELASTOMERIC EXP. BRG.**

(S. Abut., Abut. F, Pier 2)



**BEARING ASSEMBLY**

Note: Shim plates shall not be placed under Bearing Assembly.

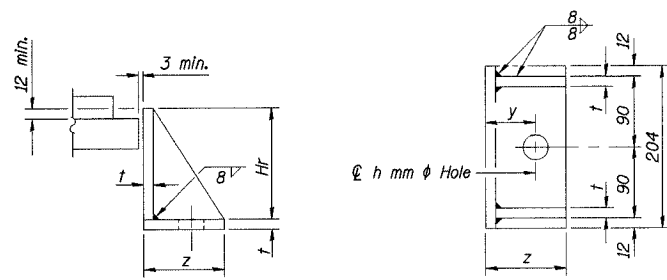
Notes: Anchor bolts at fixed bearings may be built into the masonry. See sheet No. 42 of 42 sheets for Anchor Bolt Installation. All dimensions are in millimeters (mm) except as noted.

**TYPE I ELASTOMERIC EXP. BRG. LOCATIONS**

Unit	Location	No. of Brgs. Req'd
1	Pier 2	12
2	S. Abut.	6
2	Pier 2	6
3	Abut. F	6
3	Pier 2	6

**SHIM TABLE**

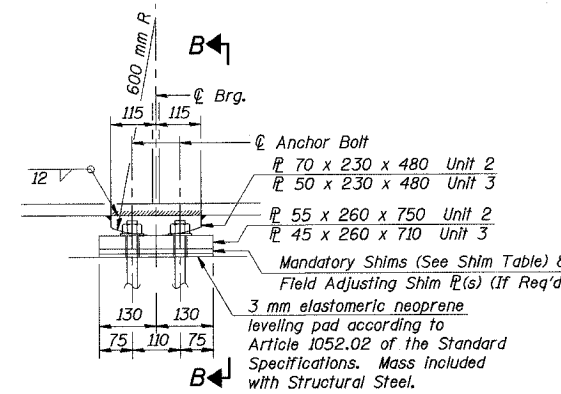
Unit	Location	Shim
1	Pier 2, G5	16
1	Pier 2, G7	18
1	Pier 2, G8	8
1	Pier 2, G9	2
1	Pier 2, G12	3
2	Pier 2, G1	22
2	Pier 2, G2	11
2	Pier 2, G3	3
2	Pier 2, G6	4
3	Pier F1, G6	11
3	Pier 2, G5	3



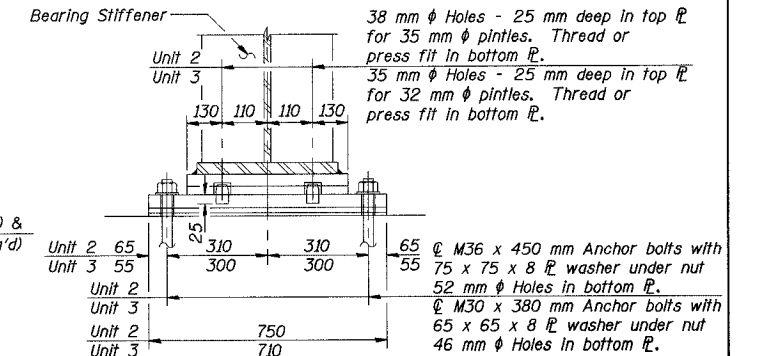
**SIDE RETAINER**

Equivalent rolled angle with stiffeners will be allowed in lieu of welded plates. Mass included with Furnishing Structural Steel for Units 1 and 2. Mass included with Furnishing Elastomeric Bearing Type I (800 In<sup>3</sup> < V < 1000 In<sup>3</sup>) for Unit 3.

DESIGNED	TRL
CHECKED	JJK
DRAWN	LK
CHECKED	JJK



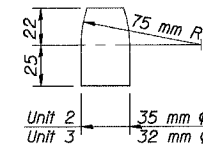
**ELEVATION AT PIERS 1 & F1**



**SECTION B-B**

**FIXED BEARING**

(Pier 1, Pier F1)  
(Structural Steel AASHTO M 270M Grade 345, Mass Included with Furnishing Structural Steel)



**PINTLE**

**LOW PROFILE FIXED BRG. LOCATIONS**

Unit	Location	No. of Brgs. Req'd
2	Pier 1	6
3	Pier F1	6

**ELASTOMERIC BEARING ASSEMBLY DIMENSIONS**

Member	Dimension	Unit				
		1 Pier 2	2 S. Abut.	2 Pier 2	3 Abut. F	3 Pier 2
Top Plate	Lt	508	456	508	456	456
	Wt	330	304	330	304	304
	Tt	55	50	50	50	50
Bearing	Le	458	406	458	406	406
	We	306	280	306	280	280
	Te	128	93	109	77	77
	Tp	14	13	14	13	13
	Np	7	6	6	5	5
	Ts	5	3	5	3	3
	Ns	6	5	5	4	4
Side Retainer	Th	183	143	159	127	127
	y	70	60	70	60	60
	z	140	120	140	120	120
	t	16	14	16	14	14
	h	44	38	44	38	38
Threaded Stud	Hr	179	141	155	125	125
	Hs	76	71	71	91	91

**BILL OF MATERIAL**

Item	Unit	Quantity
Furnishing Elastomeric Bearing Assembly, Type I	Each	24
Furnishing Elastomeric Bearing Type I (800 In <sup>3</sup> < V < 1000 In <sup>3</sup> )	Each	12

ILLINOIS DEPARTMENT OF TRANSPORTATION  
I-94 EAST BOUND / IL 394 SOUTH BOUND  
**ELASTOMERIC EXP. BRGS. TYPE I & LOW PROFILE FIXED BRGS.**  
SB IL ROUTE 394 / RAMP F OVER THORN CREEK  
F.A.P. 332 SECTION 2004-133F  
COOK COUNTY  
STA. 440+704.350 STRUCTURE NO. 016-2800/2845  
DATE 05/16/05  
SCALE ---

**HNTB**

L:\keltre\EA\34562\CADD\1\SN\_2800\cadd\CTR\_29\_2800\br\19022.as\_2800.dgn  
16-JUN-2005 10:54