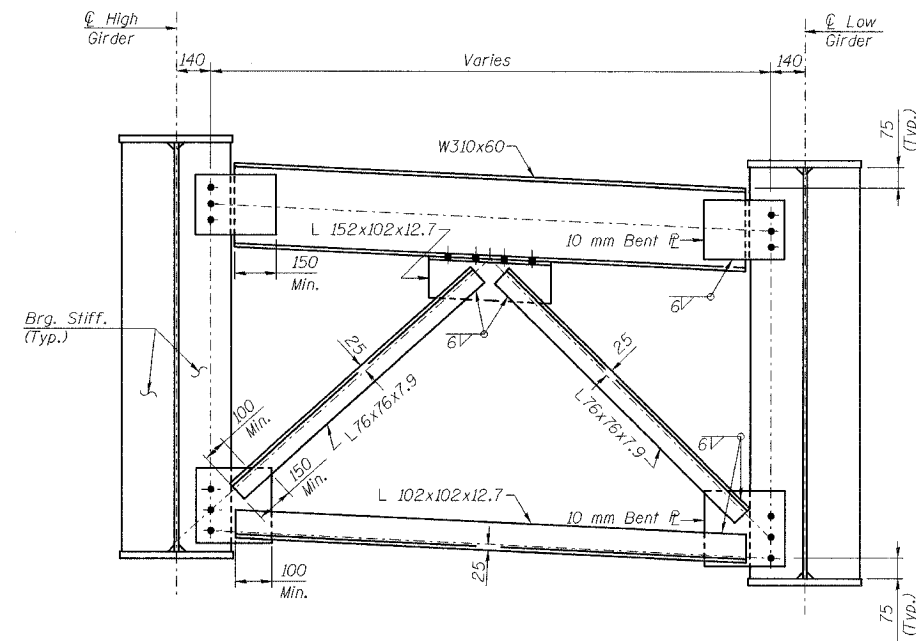
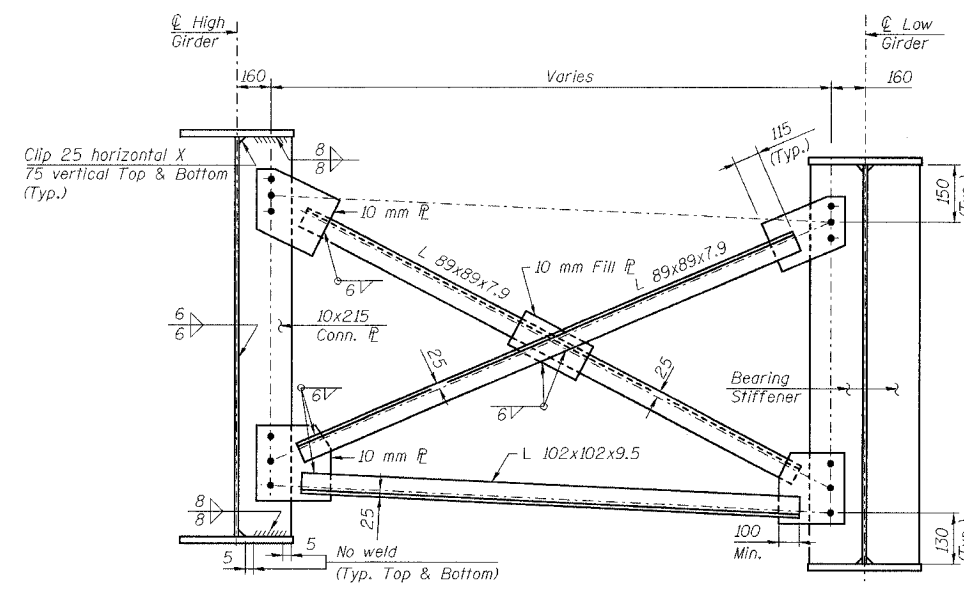


STATE OF ILLINOIS
DEPARTMENT OF TRANSPORTATION

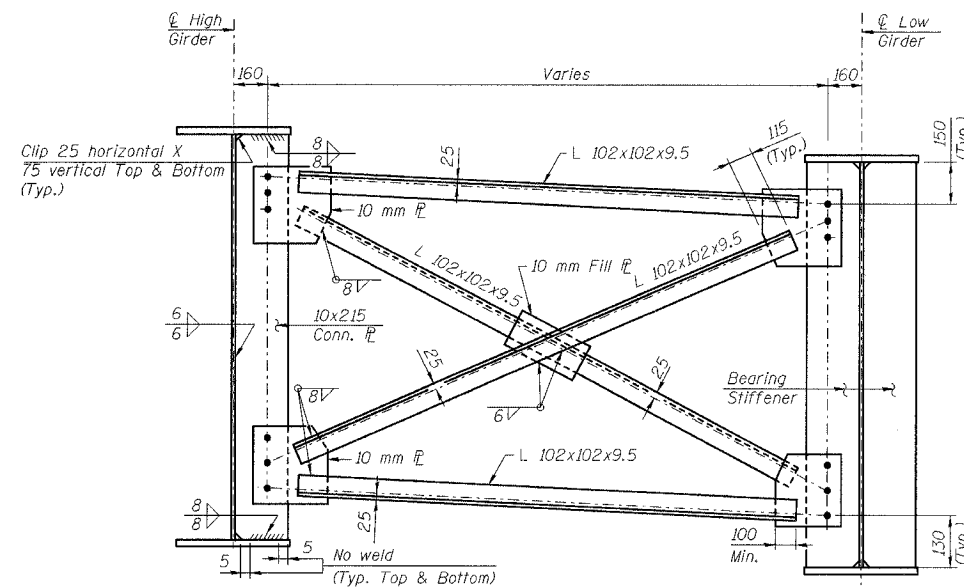
ROUTE NO.	SECTION	COUNTY	TOTAL SHEETS	SHEET NO.	SHEET NO. 27 42 SHEETS
F. A. I. 80/94		COOK	90	42	
FED. ROAD DIST. NO. 1		ILLINOIS	FED. AID PROJECT-		
2004-133F		CONTRACT NO. 62898			



END CROSS FRAME D1
(All Materials AASHTO M270M Grade 345, N.T.R.)



AT CONNECTION PLATE **AT BEARING STIFFENER**
INTERIOR CROSS FRAME D2
(For Straight Girders)
(All Materials AASHTO M270M Grade 345, N.T.R. except Fill PL)



AT CONNECTION PLATE **AT BEARING STIFFENER**
INTERIOR CROSS FRAME D3
(For Curved Girders)
(All Material AASHTO M270M Grade 345, N.T.R. except Fill PL)

- Notes:
- All dimensions are in millimeters (mm) except as noted.
 - All cross frame connections to have 28 mm ϕ oversized holes for all M22 H.S. Bolts.
 - Two hardened washers shall be required over each oversized hole.
 - See Sheet No. 25 of 42 for bearing stiffener details.
 - N.T.R. denotes members to which notch toughness requirements are applicable.

jk\elite
 et\34562\CADD\1\SNL_2800\cads\CTR_2\2800\F191114s_2800.dgn
 13-MAY-2005 09:51

DESIGNED	JY
CHECKED	MEA
DRAWN	LK
CHECKED	MEA

ILLINOIS DEPARTMENT OF TRANSPORTATION
I-94 EAST BOUND / IL 394 SOUTH BOUND
CROSS FRAMING DETAILS
SPANS 3-5 - UNIT 1
SB IL ROUTE 394 OVER THORN CREEK
F.A.P. 332 SECTION 2004-133F
COOK COUNTY
STA. 440+704.350 STRUCTURE NO. 016-2800
DATE 05/16/05
SCALE ---

HNTB