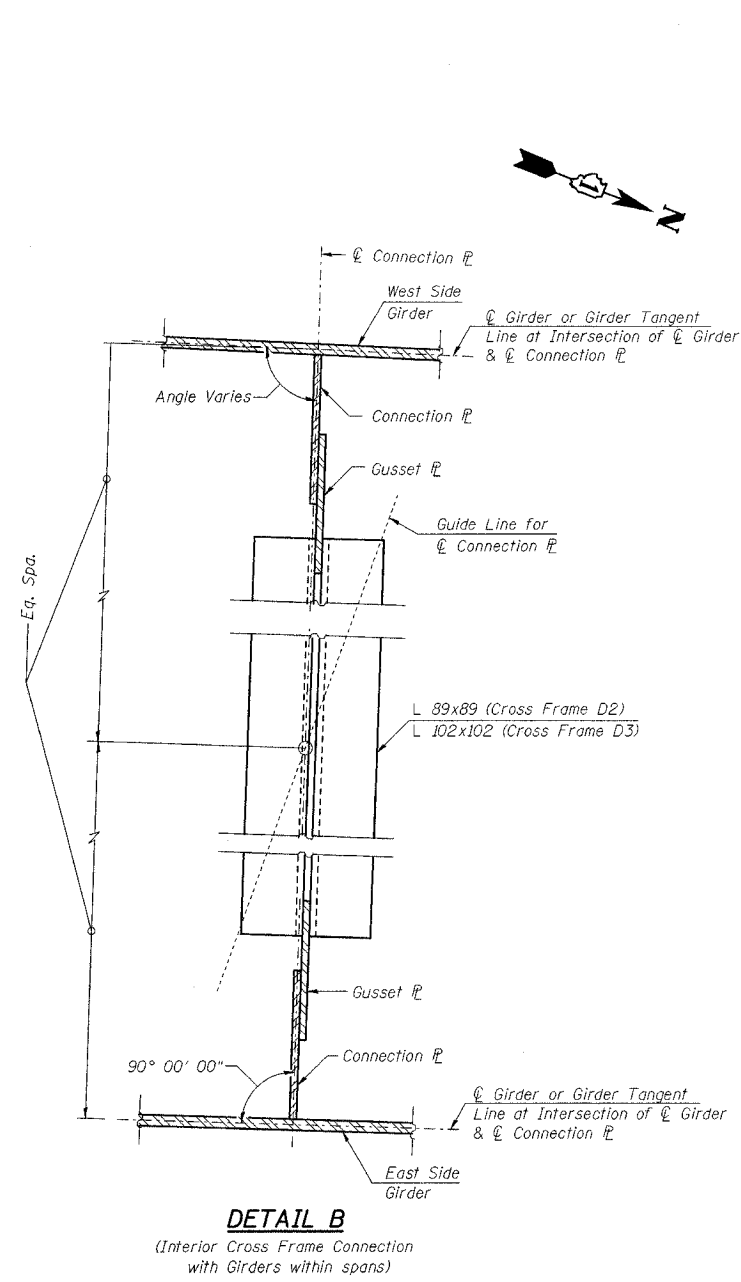
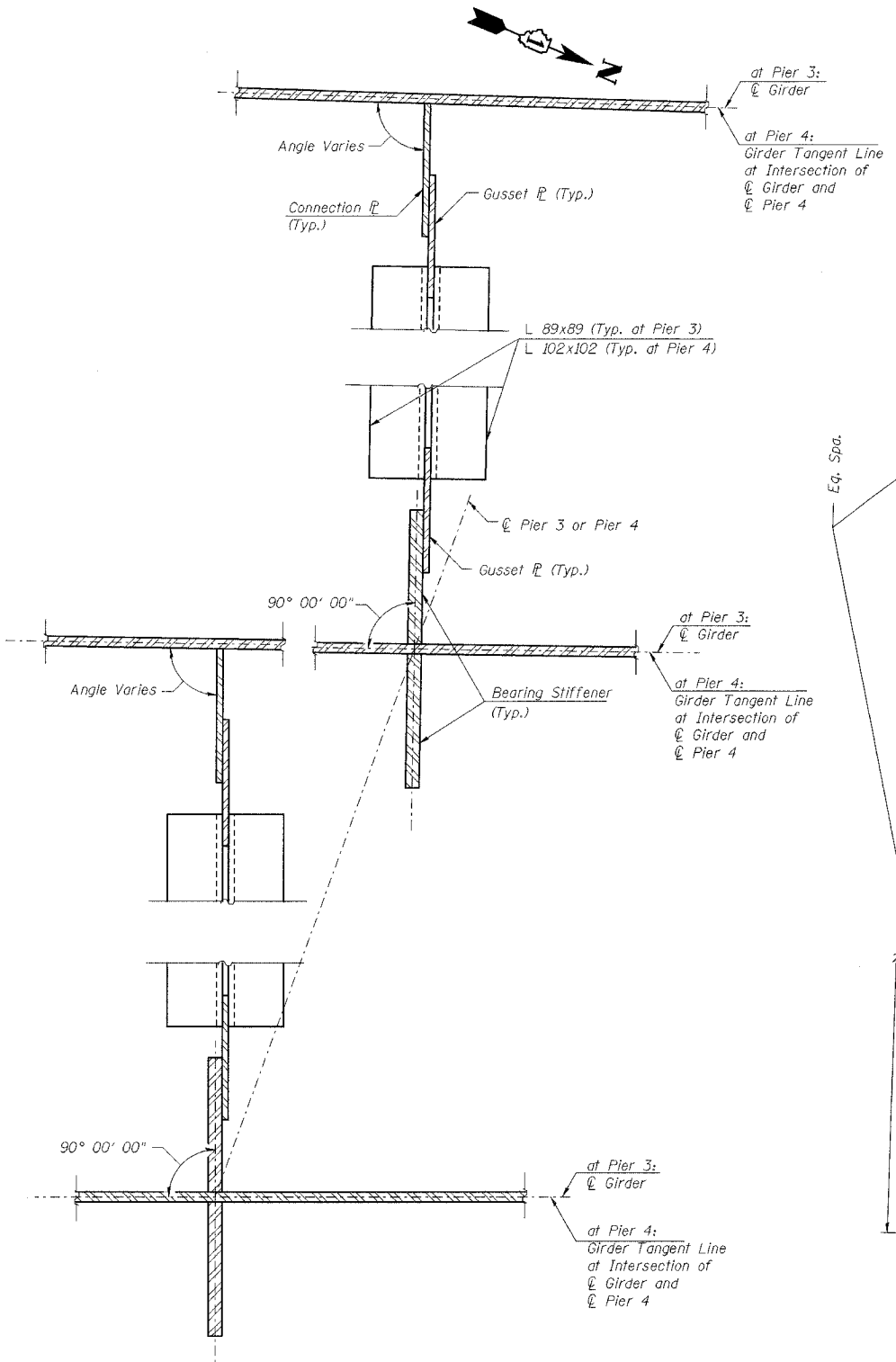


STATE OF ILLINOIS  
DEPARTMENT OF TRANSPORTATION

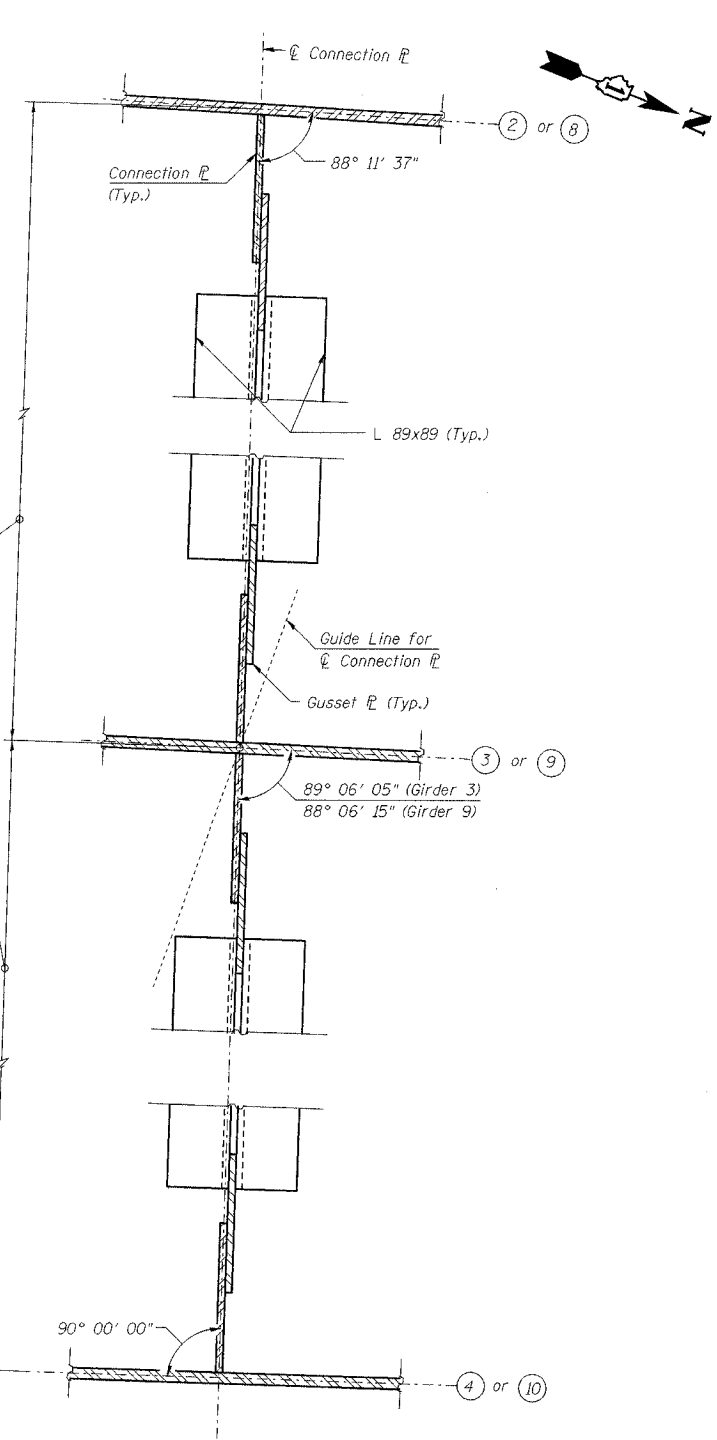
ROUTE NO.	SECTION	COUNTY	TOTAL SHEETS	SHEET NO.	SHEET NO. 26 42 SHEETS
F. A. I. 80/94	*	COOK	90	41	
FED. ROAD DIST. NO. 1		ILLINOIS FED. AID PROJECT-		CONTRACT NO. 62898	
2004-133F					



**DETAIL B**  
(Interior Cross Frame Connection with Girders within spans)



**DETAIL C**  
(Interior Cross Frame Connection with Girders at Pier 3 & Pier 4)



**DETAIL D**  
(Interior Cross Frame Connection with Girders 3 & 9 only within spans)

- Notes:
1. Work this sheet with sheet No. 19, 21 & 23 of 42.
  2. See sheet 27 of 42 for Cross Frame Details.

I:\e\12\2004\133F\12-MR-2895-1523.dgn  
 E:\3\052\CAD\DWG\12-MR-2895-1523.dwg  
 12-MR-2895-1523

DESIGNED	JY
CHECKED	MEA
DRAWN	LK
CHECKED	MEA

ILLINOIS DEPARTMENT OF TRANSPORTATION  
I-94 EAST BOUND / IL 394 SOUTH BOUND  
CONNECTION DETAILS - 2  
SPANS 3-5 - UNIT 1  
SB IL ROUTE 394 OVER THORN CREEK  
F.A.P. 332 SECTION 2004-133F  
COOK COUNTY  
STA. 440+704.350 STRUCTURE NO. 016-2800  
DATE 05/16/05  
SCALE ---

