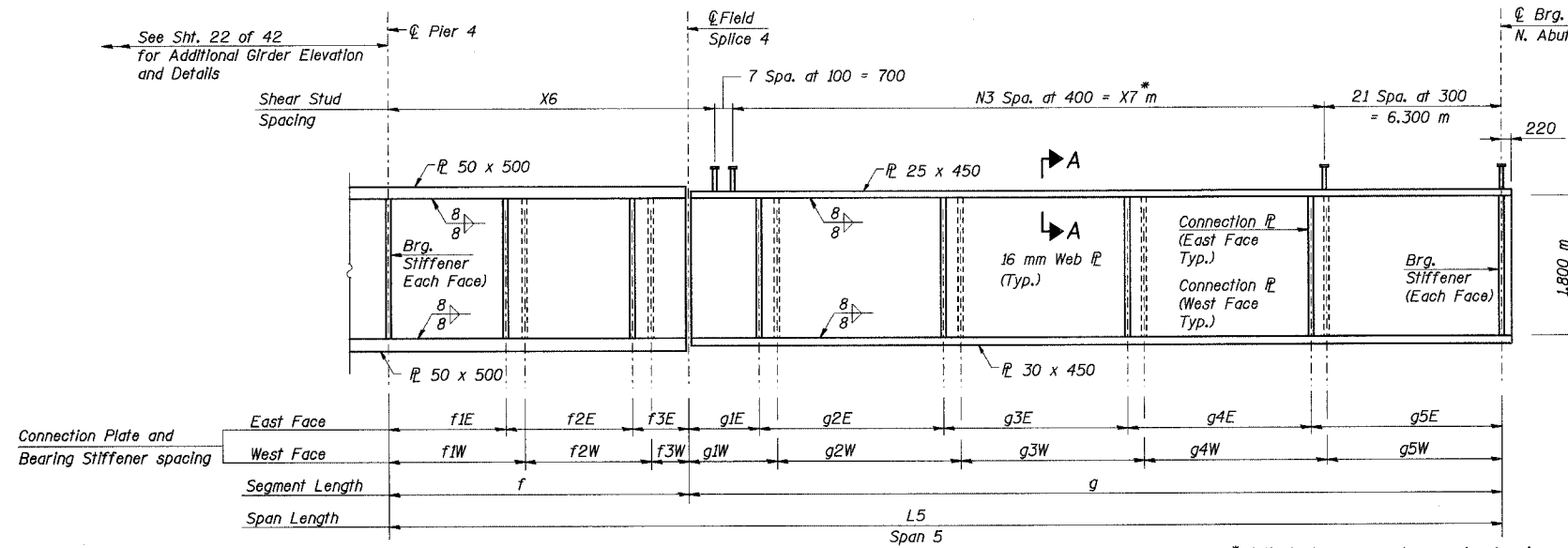


STATE OF ILLINOIS
DEPARTMENT OF TRANSPORTATION

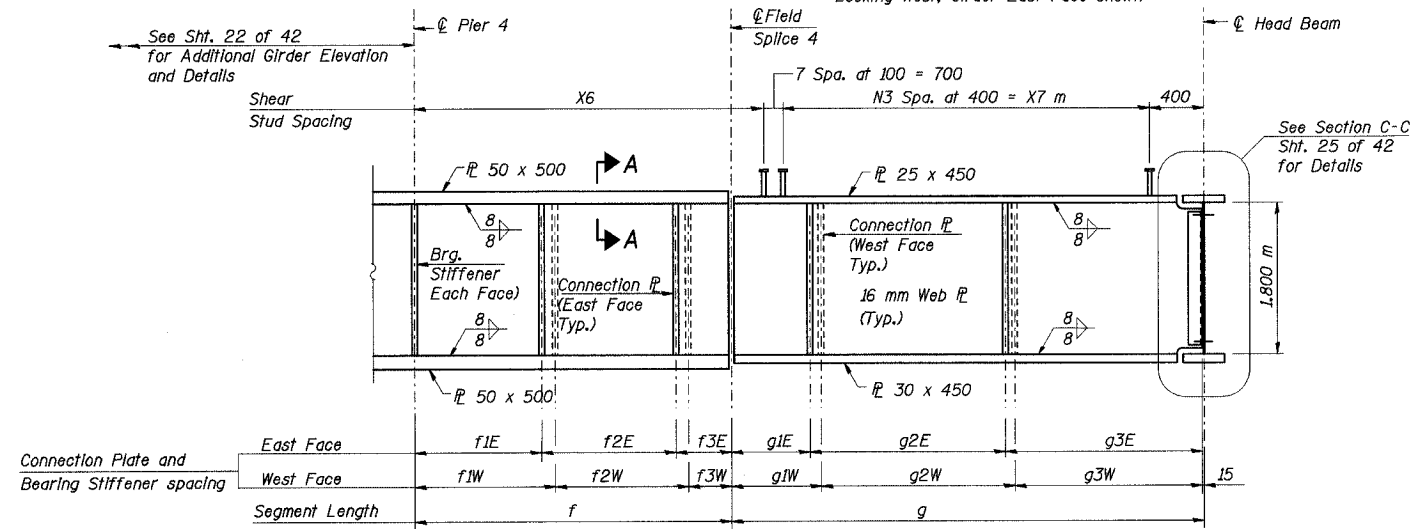
ROUTE NO.	SECTION	COUNTY	TOTAL SHEETS	SHEET NO.	SHEET NO. 24
F. A. I. 80/94	.	COOK	90	39	42 SHEETS
FED. ROAD DIST. NO. 1	ILLINOIS	FED. AID PROJECT-			
* 2004-133F			CONTRACT NO. 62898		



ELEVATION - GIRDERS 1 THRU 12 EXCEPT 3, 5 & 9

(All Plates AASHTO M270M Grade 345, N.T.R.)
Looking West, Girder East Face shown

* Adjust shear connector spacing to miss top connection pl. to head beams at Girder 4 & Girder 6.



ELEVATION - GIRDER 5

(All Plates AASHTO M270M Grade 345, N.T.R.)
Looking West, Girder East Face shown

GIRDER CONNECTION PLATE & BEARING STIFFENER SPACING (Meters)

Girder No.	Girder East Side							Girder West Side								
	f1E	f2E	f3E	g1E	g2E	g3E	g4E	g5E	f1W	f2W	f3W	g1W	g2W	g3W	g4W	g5W
1	4.526	4.820	2.061	2.752	7.022	7.009	6.997	7.206	-	-	-	-	-	-	-	-
2	4.600	4.820	1.991	2.820	7.018	7.004	6.991	7.167	5.112	4.803	1.496	3.301	6.999	6.986	6.973	6.741
3	-	-	-	-	-	-	-	-	-	-	-	-	-	-	-	-
4	4.556	4.837	2.010	2.811	7.028	6.812	7.093	7.155	5.039	4.800	1.564	3.229	6.989	6.972	6.957	6.752
5	4.599	4.857	2.010	2.844	7.069	7.173	-	-	5.090	4.821	1.555	3.250	7.006	6.830	-	-
6	4.552	4.880	2.110	2.764	7.112	7.100	7.088	7.294	5.120	4.845	1.577	3.265	7.055	7.223	6.971	6.844
7	4.519	4.887	2.168	2.713	7.124	7.113	7.102	7.419	5.211	4.869	1.494	3.369	7.097	7.085	7.074	6.846
8	4.612	4.886	2.077	2.801	7.117	7.103	7.089	7.365	5.257	4.876	1.442	3.430	7.109	7.098	7.087	6.751
9	-	-	-	-	-	-	-	-	-	-	-	-	-	-	-	-
10	4.518	4.886	2.158	2.717	7.109	7.090	7.072	7.341	5.163	4.871	1.528	3.335	7.094	7.078	7.063	6.759
11	4.517	4.888	2.164	2.715	7.114	7.095	7.077	7.350	5.257	4.867	1.445	3.413	7.083	7.064	7.046	6.745
12	-	-	-	-	-	-	-	-	5.263	4.870	1.442	3.419	7.088	7.069	7.052	6.745

DESIGNED	JY
CHECKED	MEA
DRAWN	LK
CHECKED	MEA

SHEAR CONNECTOR NUMBERS

"NOT IN CONTRACT"

Girder No.	N3
1	57
2	57
3	-
4	53
5	27
6	51
7	57
8	58
9	-
10	58
11	58
12	58

SHEAR CONNECTOR LOCATIONS (Meters)

"NOT IN CONTRACT"

Girder No.	X6	X7
1	12.593	22.800
2	12.611	22.800
3	-	-
4	14.102	21.200
5	16.667	10.800
6	15.500	20.400
7	13.245	22.800
8	12.850	23.200
9	-	-
10	12.691	23.200
11	12.720	23.200
12	12.748	23.200

Notes:

- All dimensions are in millimeters (mm) except as noted.
- See Sht. No. 25 of 42 for Section A-A.
- See Sht. No. 17 of 42 for Dimensions f, g and L5.
- Work this sheet with Sheet Nos. 23, 28 - 30 of 42.
- N.T.R. denotes notch toughness requirements are applicable.

ILLINOIS DEPARTMENT OF TRANSPORTATION
I-94 EAST BOUND / IL 394 SOUTH BOUND
GIRDER ELEVATION AND DETAILS
SPAN 5
SB IL ROUTE 394 OVER THORN CREEK
F.A.P. 332 SECTION 2004-133F
COOK COUNTY
STA. 440+704.350 STRUCTURE NO. 016-2800
DATE 05/16/05
SCALE ---

HNTB

L:\Kaito EA\34562\CADD\1\SN_2800\cadd\CTR_29_2800\Fpl\9184e_2800.dgn
16-JUN-2005 10:54