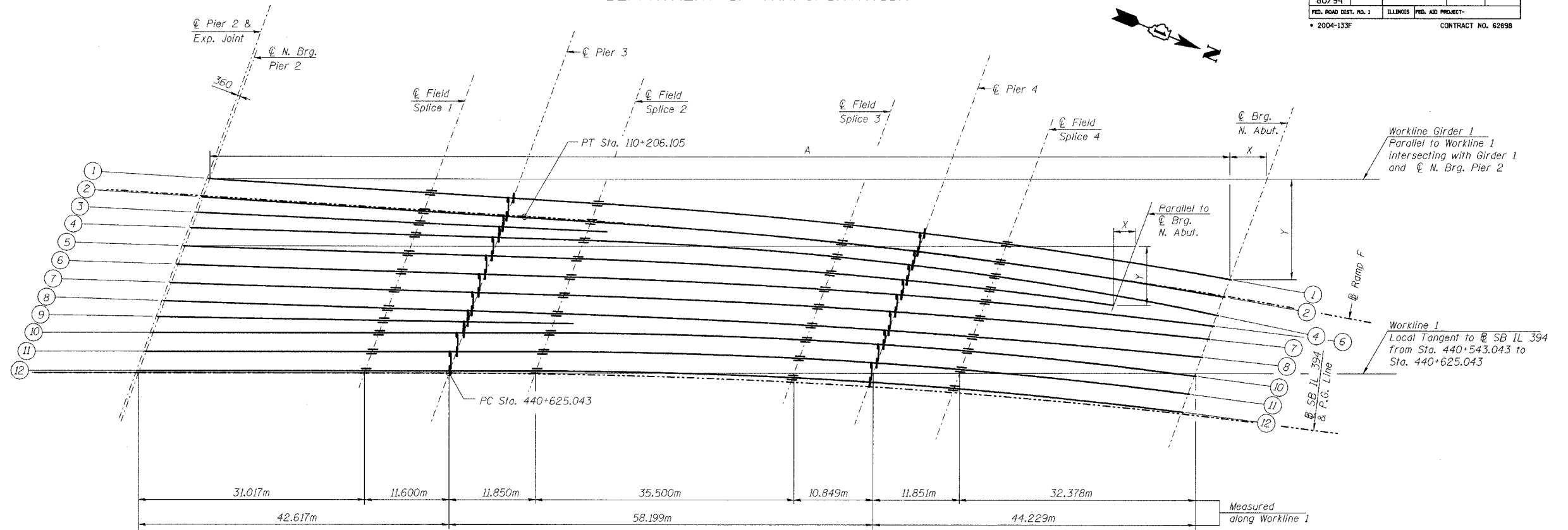


STATE OF ILLINOIS
DEPARTMENT OF TRANSPORTATION

| | | | | | |
|-----------------------|---------|----------------------------|--------------|--------------------|---------------------------|
| ROUTE NO. | SECTION | COUNTY | TOTAL SHEETS | SHEET NO. | SHEET NO. 18 42 SHEETS |
| F. A. I. 80/94 | | COOK | 90 | 33 | |
| FED. ROAD DIST. NO. 1 | | ILLINOIS FED. AID PROJECT- | | CONTRACT NO. 62898 | |
| 2004-133F | | | | | |



GIRDER LAYOUT

LAYOUT DIMENSIONS (Length in Meters)

| Girder | Station** | N. Brg. Pier 2 Sta. 440+582.426 | | | FS 1 Sta. 440+613.443 | | | Pier 3 Sta. 440+625.043 | | | FS 2 Sta. 440+636.866 | | | FS 3 Sta. 440+671.980 | | | Pier 4 Sta. 440+682.627 | | | FS 4 Sta. 440+694.217 | | | Brg. N. Abut. or End of G5 Sta. 440+725.679 | | |
|--------|-----------|------------------------------------|-------|-------|--------------------------|-------|-------|----------------------------|-------|-------|--------------------------|-------|-------|--------------------------|-------|-------|----------------------------|-------|-------|--------------------------|-------|-------|--|-------|--------|
| | | A | X | Y | A | X | Y | A | X | Y | A | X | Y | A | X | Y | A | X | Y | A | X | Y | A | X | Y |
| 1 | 750.377 | 0.000 | 0.000 | 0.000 | 31.017 | 0.697 | 1.914 | 42.617 | 0.957 | 2.630 | 54.467 | 1.224 | 3.362 | 89.967 | 2.305 | 6.332 | 100.816 | 2.746 | 7.545 | 112.667 | 3.287 | 9.032 | 145.045 | 5.072 | 13.935 |
| 2 | 768.670 | 0.000 | 0.000 | 0.000 | 31.017 | 0.697 | 1.914 | 42.617 | 0.957 | 2.630 | 54.467 | 1.224 | 3.362 | 89.967 | 2.298 | 6.313 | 100.816 | 2.735 | 7.514 | 112.667 | 3.270 | 8.983 | 145.045 | 5.030 | 13.819 |
| 3 | - | 0.000 | 0.000 | 0.000 | 31.017 | 0.524 | 1.441 | 42.617 | 0.721 | 1.979 | - | - | - | - | - | - | - | - | - | - | - | - | - | - | - |
| 4 | 503.863 | 0.000 | 0.000 | 0.000 | 31.017 | 0.352 | 0.967 | 42.617 | 0.484 | 1.329 | 54.467 | 0.618 | 1.698 | 89.967 | 1.452 | 3.990 | 100.816 | 1.875 | 5.151 | 112.667 | 2.424 | 6.659 | 145.045 | 4.377 | 12.026 |
| 5 | 661.475 | 0.000 | 0.000 | 0.000 | 31.017 | 0.352 | 0.967 | 42.617 | 0.484 | 1.329 | 54.467 | 0.618 | 1.698 | 89.967 | 1.351 | 3.712 | 100.816 | 1.704 | 4.682 | 112.667 | 2.157 | 5.927 | 127.465 | 2.966 | 8.150 |
| 6 | 993.453 | 0.000 | 0.000 | 0.000 | 31.017 | 0.352 | 0.967 | 42.617 | 0.484 | 1.329 | 54.467 | 0.618 | 1.698 | 89.967 | 1.242 | 3.412 | 100.816 | 1.520 | 4.175 | 112.667 | 1.868 | 5.133 | 145.045 | 3.062 | 8.412 |
| 7 | 1233.121 | 0.000 | 0.000 | 0.000 | 31.017 | 0.352 | 0.967 | 42.617 | 0.484 | 1.329 | 54.467 | 0.618 | 1.698 | 89.967 | 1.199 | 3.295 | 100.816 | 1.447 | 3.977 | 112.667 | 1.755 | 4.823 | 145.045 | 2.792 | 7.671 |
| 8 | 1242.425 | 0.000 | 0.000 | 0.000 | 31.017 | 0.352 | 0.967 | 42.617 | 0.484 | 1.329 | 54.467 | 0.618 | 1.698 | 89.967 | 1.198 | 3.292 | 100.816 | 1.445 | 3.970 | 112.667 | 1.752 | 4.813 | 145.045 | 2.784 | 7.648 |
| 9 | - | 0.000 | 0.000 | 0.000 | 31.017 | 0.176 | 0.482 | 42.617 | 0.241 | 0.663 | - | - | - | - | - | - | - | - | - | - | - | - | - | - | - |
| 10 | 672.128 | 0.000 | 0.000 | 0.000 | 31.017 | 0.000 | 0.000 | 42.617 | 0.000 | 0.000 | 54.467 | 0.000 | 0.000 | 89.967 | 0.335 | 0.921 | 100.816 | 0.568 | 1.561 | 112.667 | 0.891 | 2.600 | 145.045 | 2.128 | 5.845 |
| 11 | 690.950 | 0.000 | 0.000 | 0.000 | 31.017 | 0.000 | 0.000 | 42.617 | 0.000 | 0.000 | 54.467 | 0.000 | 0.000 | 89.967 | 0.326 | 0.896 | 100.816 | 0.553 | 1.519 | 112.667 | 0.867 | 2.383 | 145.045 | 2.072 | 5.692 |
| 12 | 709.488 | 0.000 | 0.000 | 0.000 | 31.017 | 0.000 | 0.000 | 42.617 | 0.000 | 0.000 | 54.467 | 0.000 | 0.000 | 89.967 | 0.318 | 0.873 | 100.816 | 0.539 | 1.481 | 112.667 | 0.845 | 2.322 | 145.045 | 2.020 | 5.549 |

* Girder 3 and 9 are straight Girders. All the remaining Girders are straight from Pier 2 to Field Splice 2 and curved from Field Splice 2 to N. Abut. with their Radii shown in the table.

** Station along @ SB IL 394.

Note:

- Coordinate system shown for Girder 1. Typical for all Girders with parallel worklines with Workline 1 intersecting with @ Girders and @ N. Brg. Pier 2.
- Work this sheet with Sheet No. 17 of 42.

| | |
|----------|-----|
| DESIGNED | JY |
| CHECKED | MEA |
| DRAWN | LK |
| CHECKED | MEA |

I:\projects\2004\11\11-2800\11-2800.ctb\11-2800.ctb\11-2800.ctb\11-2800.ctb
 12-MAY-2005 15:25

ILLINOIS DEPARTMENT OF TRANSPORTATION
I-94 EAST BOUND / IL 394 SOUTH BOUND
GIRDER LAYOUT
SPANS 3-5 - UNIT 1
SB IL ROUTE 394 OVER THORN CREEK
F.A.P. 332 SECTION 2004-133F
COOK COUNTY
STA. 440+704.350 STRUCTURE NO. 016-2800
DATE 05/16/05
SCALE ---
HNTB