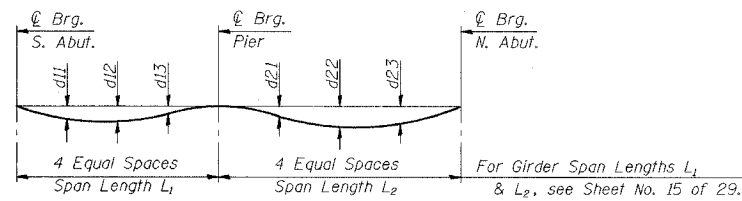


STATE OF ILLINOIS
DEPARTMENT OF TRANSPORTATION

ROUTE NO.	SECTION	COUNTY	TOTAL SHEETS	SHEET NO.	SHEET NO. 5
F. A. I-80/34		COOK	90	6	29 SHEETS
FED. ROAD DIST. NO. 1	ILLINOIS	FED. AID PROJECT-			
*2004-133F			CONTRACT NO. 62898		

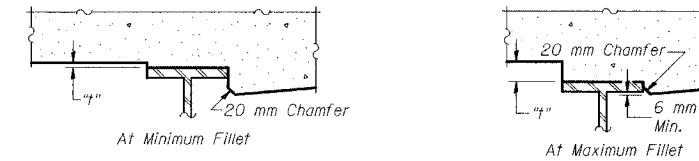


DEAD LOAD DEFLECTION DIAGRAM
(Includes weight of concrete only)

DEFLECTION TABLE

Girder	Span 1			Span 2		
	d11	d12	d13	d21	d22	d23
1 & 6	36	38	15	17	42	38
2-5	41	43	17	19	48	43

Note: The above deflections are not to be used in the field if the engineer is working from the grade elevations adjusted for dead load deflections as shown in the "Top of Slab Elevations" tables.

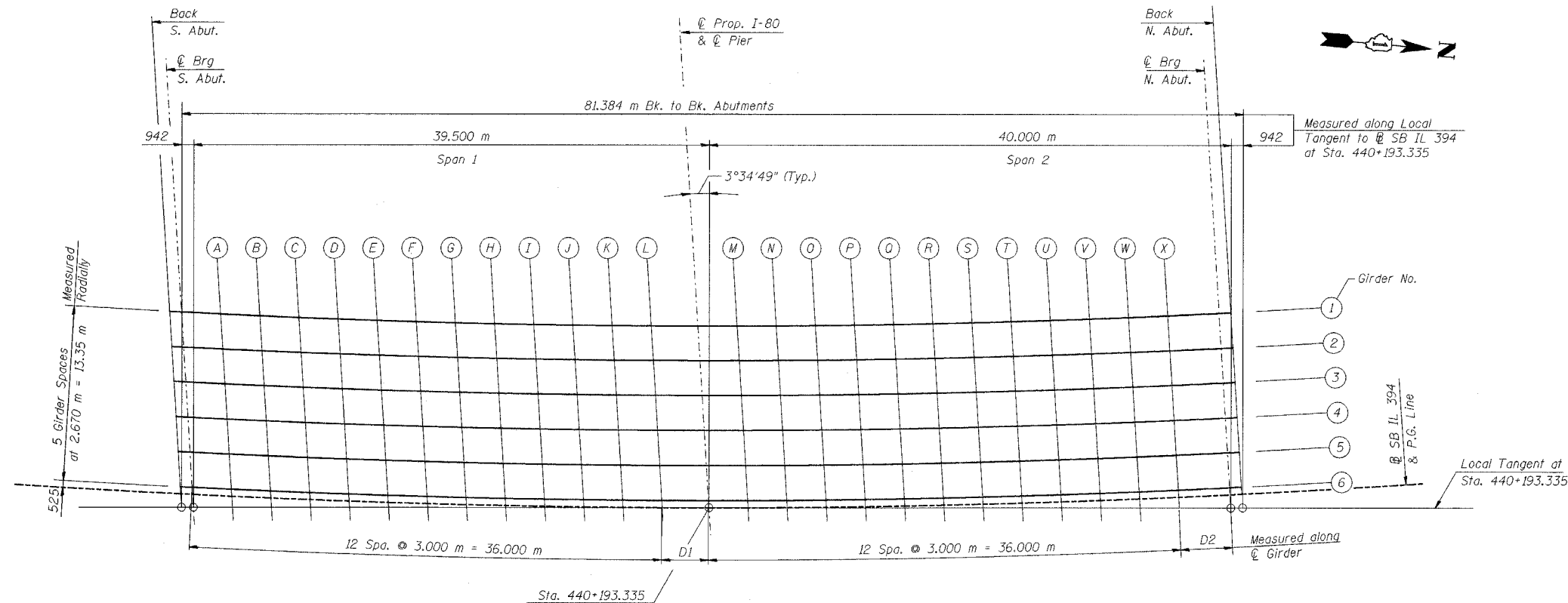


To determine "t": After all structural steel has been erected, elevations of the top flanges of the girders shall be taken at intervals shown in the elevation tables. These elevations subtracted from the "Theoretical Grade Elevations Adjusted for Dead Load Deflection" shown in the elevation tables, minus slab thickness, equals the fillet heights "t" above top flange of girders.

FILLET HEIGHTS

END OF SPAN DIMENSIONS (Meters)

Girder	D1	D2
1	3.583	3.955
2	3.582	3.955
3	3.581	3.955
4	3.580	3.954
5	3.579	3.954
6	3.578	3.954
Ø/PGL	3.578	3.954



ELEVATION GRID

**THIS SHEET FOR
INFORMATION ONLY**

DESIGNED	MEA
CHECKED	MAS/PY
DRAWN	LK
CHECKED	MAS/PY

- Notes:
1. Work this Sheet with Nos. 6-8 of 29 sheets.
 2. All offsets & elevations shown in the "Top of Slab Elevations" tables are in meters (m).
 3. All dimensions are in millimeters (mm) except as noted.

ILLINOIS DEPARTMENT OF TRANSPORTATION
I-94 EAST BOUND / IL 394 SOUTH BOUND
TOP OF SLAB ELEVATION GRID AND DETAILS
SB ILLINOIS ROUTE 394 OVER INTERSTATE 80
F.A.P. 332 SECTION 2004-133F
COOK COUNTY
STA. 440+193.335 STRUCTURE NO. 016-2796
DATE 05/16/05
SCALE ---

HNTB

I:\k11to EA\34562\CADD\B1\SN_2796\CDS\CTR_29_2796\sp_90014e_2796.dgn 12-MAY-2005 15:34