

ROUTE	SECTION	COUNTY	TOTAL SHEETS	SHEET NUMBER
FAP 343	531-4HBK-I-2	COOK	10	1

FOR INDEX OF SHEETS SEE SHEET 2

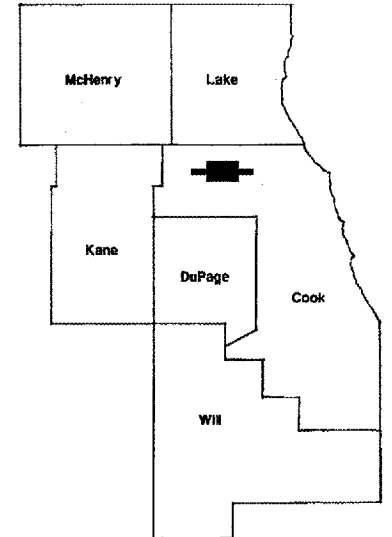
**STATE OF ILLINOIS  
DEPARTMENT OF TRANSPORTATION  
DIVISION OF HIGHWAYS  
DISTRICT ONE  
PROPOSED HIGHWAY PLANS**

**CONTRACT NO. 62865**

D-91-042-05

**IMPROVEMENT IS  
LOCATED IN THE VILLAGE  
OF PALATINE**

FAP 343: ILLINOIS ROUTE 68  
OVER ILLINOIS ROUTE 53  
SECTION: 531-4HBK-I-2  
BEAM REPLACEMENT  
COOK COUNTY  
C-91-042-05



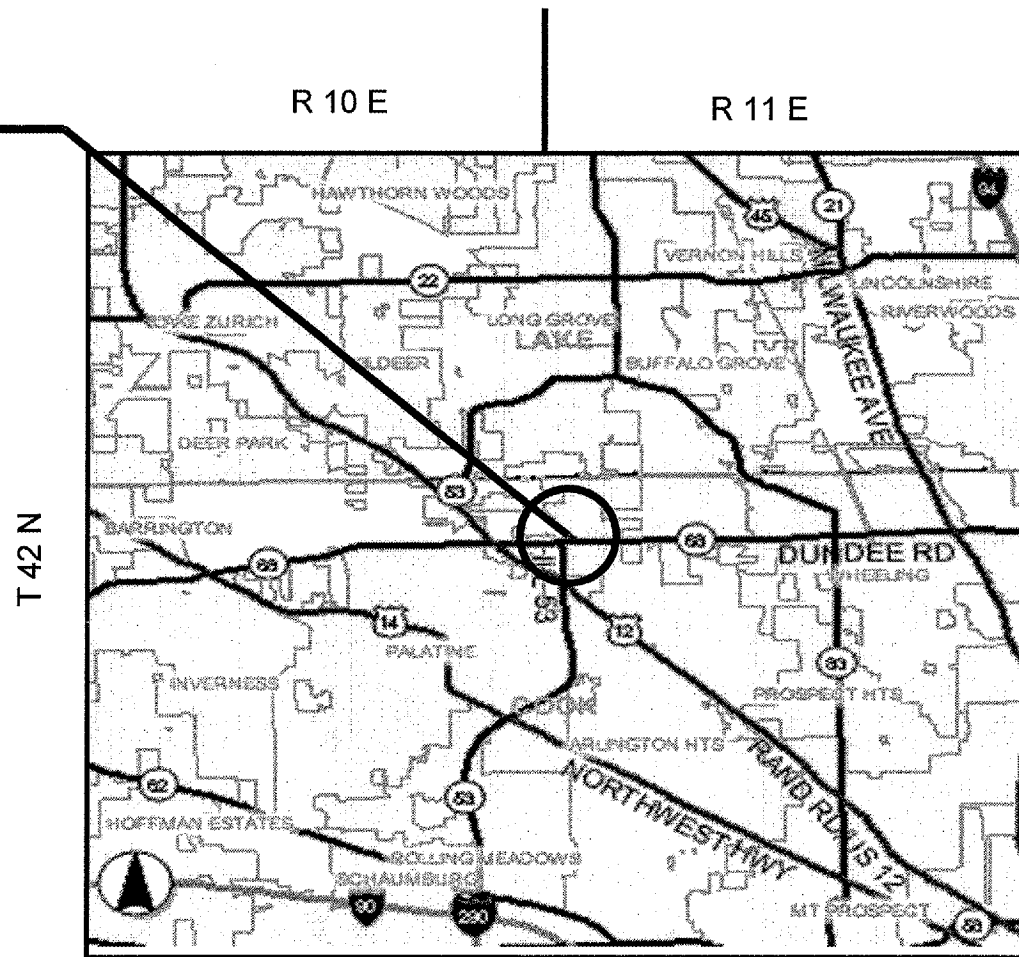
LOCATION OF IMPROVEMENT INDICATED THUS:

**LOCATION OF  
IMPROVEMENT AT  
S.N.: 016-0961**

**TRAFFIC DATA:**

IL RTE. 53:  
SPEED LIMIT = 55 MPH  
2003 ADT = 93,400

IL RTE. 68:  
SPEED LIMIT = 45 MPH  
2003 ADT = 38,800



DISTRICT ONE - DESIGN - PLAN PREPARATION ENGINEER:  
KEN ENG / ROBERT BORO (847) 705-4178

**CONTRACT NO. 62865**

**STATE OF ILLINOIS  
DEPARTMENT OF TRANSPORTATION  
DIVISION OF HIGHWAYS**

SUBMITTED: March 23, 20 05  
Dina O'Keefe / PP  
DEPUTY DIRECTOR OF HIGHWAYS, REGION ENGINEER

May 13, 2005  
Mike Hine / PD  
ENGINEER OF DESIGN AND ENVIRONMENT

May 13, 2005  
Victor Moders / PD  
DIRECTOR, DIVISION OF HIGHWAYS

**PRINTED BY THE AUTHORITY  
OF THE STATE OF ILLINOIS**

**J.U.L.I.E.: JOINT UTILITY LOCATION  
INFORMATION FOR EXCAVATION  
(312) 744-7000**

ROUTE	SECTION	COUNTY	TOTAL SHEETS	SHEET NUMBER
FAP 343	531-4HBK-I-2	COOK	10	2

**CONTRACT NO. 62865**

**INDEX OF SHEETS**

**GENERAL NOTES**

- 1 TITLE SHEET
- 2 INDEX OF SHEETS, STATE STANDARDS AND GENERAL NOTES
- 3 - 4 SUMMARY OF QUANTITIES
- 5 - 7 BRIDGE REPAIR PLANS
- 8 TRAFFIC CONTROL PLANS
- 9 TRAFFIC CONTROL FOR SHOULDER CLOSURES AND PARTIAL RAMP CLOSURES
- 10 TRAFFIC CONTROL AND PROTECTION FOR SIDE ROADS, INTERSECTIONS AND DRIVEWAYS

BEFORE STARTING ANY EXCAVATION, THE CONTRACTOR SHALL CALL "J.U.L.I.E." (JOINT UTILITY LOCATION INFORMATION FOR EXCAVATION) AT (800) 892-0123 FOR FIELD LOCATIONS OF BURIED ELECTRIC, TELEPHONE AND GAS UTILITIES. (48 HOURS NOTIFICATION IS REQUIRED).

THE CONTRACTOR WILL NOT BE ALLOWED TO SET UP A YARD OR FIELD OFFICE ON STATE PROPERTY WITHOUT WRITTEN PERMISSION FROM THE DEPARTMENT.

IT SHALL BE THE CONTRACTOR'S RESPONSIBILITY TO VERIFY ALL DIMENSIONS AND CONDITIONS EXISTING IN THE FIELD PRIOR TO CONSTRUCTION AND ORDERING OF MATERIALS.

THE CONTRACTOR SHALL CONTACT THE DISTRICT ONE TRAFFIC CONTROL SUPERVISOR AT (847) 705-4470 A MINIMUM OF 72 HOURS IN ADVANCE OF BEGINNING WORK.

THE CONTRACTOR SHALL BE REQUIRED TO PROVIDE ACCESS TO ABUTTING PROPERTY AT ALL TIMES DURING THE CONSTRUCTION OF THIS PROJECT.

DO NOT SCALE PLANS FOR CONSTRUCTION DIMENSIONS.

THE CONTRACTOR SHALL COORDINATE CONSTRUCTION ACTIVITIES WITH UTILITY COMPANIES.

CONTRACTORS SHALL BE RESPONSIBLE FOR THE NOTIFICATION OF ALL EMERGENCY SERVICES, SCHOOL DISTRICTS, I.D.O.T.'S COMMUNICATIONS CENTER, SPRINGFIELD TRUCK PERMIT SECTION AND OTHER AGENCIES AFFECTED BY THE CLOSURE. THE CONTRACTOR SHALL ALSO BE RESPONSIBLE FOR POSTING SIGNS THAT WILL INDICATE THE DATE THE CLOSURE WILL BE IN PLACE.

WHEN ARTIFICIAL LIGHTING IS USED IN NIGHT OPERATIONS, THE CONTRACTOR SHALL EXERCISE THE UPMOST PRECAUTIONS IN PREVENTING ADVERSE VISIBILITY TO THE MOTORING PUBLIC AND ADJOINING RESIDENTIAL AREAS.

**STATE STANDARDS**

<u>STANDARDS</u>	<u>DESCRIPTION</u>
701101-01	OFF-ROAD OPERATIONS, MULTILANE, 4.5 m (15') TO 600 mm (24") FROM PAVEMENT EDGE
701301-02	LANE CLOSURE, 2L, 2W SHORT TIME OPERATIONS
701400-02	APPROACH TO LANE CLOSURE, FREEWAY / EXPRESSWAY
701401-03	LANE CLOSURE, FREEWAY / EXPRESSWAY
701411-03	LANE CLOSURE, MULTILANE, AT ENTRANCE OR EXIT RAMP, FOR SPEDS ≥ 45 MPH
701446	TWO LANE CLOSURE, FREEWAY / EXPRESSWAY
701601-04	URBAN LANE CLOSURE, MULTILANE, 1W OR 2W WITH NONTRAVERSABLE MEDIAN
702001-05	TRAFFIC CONTROL DEVICES
704001-02	TEMPORARY CONCRETE BARRIER

ILLINOIS DEPARTMENT OF TRANSPORTATION

**INDEX OF SHEETS  
STATE STANDARDS  
GENERAL NOTES**

	ROUTE	SECTION	COUNTY	TOTAL SHEETS	SHEET NUMBER
	FAP 343	531-4HBK-I-2	COOK	10	3

SUMMARY OF QUANTITIES			URBAN TOTAL QUANTITIES	CONTRACT 62865						
CODE NO	ITEM	UNIT		CONSTRUCTION TYPE CODE: SFTY - 2A						
				COOK COUNTY						
				SN 016-0961						
50102400	CONCRETE REMOVAL	CU YD	16.1	16.1						
50300255	CONCRETE SUPERSTRUCTURE	CU YD	16.1	16.1						
50500405	FURNISHING AND ERECTING STRUCTURAL STEEL	POUND	8000	8000						
50500505	STUD SHEAR CONNECTORS	EACH	129	129						
50501110	STRUCTURAL STEEL REMOVAL	POUND	8000	8000						
50800205	REINFORCEMENT BARS, EPOXY COATED	POUND	3480	3480						
50900905	REMOVING AND RE-ERECTING EXISTING RAILING	FOOT	65	65						
67000400	ENGINEER'S FIELD OFFICE, TYPE A	CAL MO	3	3						
67100100	MOBILIZATION	L SUM	1	1						
70102630	TRAFFIC CONTROL AND PROTECTION, STANDARD 701601	L SUM	1	1						
X0322467	TEMPROARY INFORMATION SIGNING FOR LANE CLOSURE	SQ FT	48	48						
X7011015	TRAFFIC CONTROL AND PROTECTION (EXPRESSWAYS)	L SUM	1	1						

ILLINOIS DEPARTMENT OF  
TRANSPORTATION  
SUMMARY OF QUANTITIES

ROUTE	SECTION	COUNTY	TOTAL SHEETS	SHEET NUMBER
FAP 343	531-4HBK-I-2	COOK	10	4

SUMMARY OF QUANTITIES			URBAN TOTAL QUANTITIES	CONTRACT 62865						
CODE NO	ITEM	UNIT		CONSTRUCTION TYPE CODE: SFTY - 2A						
			COOK COUNTY							
			SN 016-0961							
70400100	TEMPORARY CONCRETE BARRIER	FOOT	250	250						
Δ Z0030240	IMPACT ATTENUATORS, TEMPORARY (NON-REDIRECTIVE) TEST LEVEL 2	EACH	1	1						
Z0047300	PROTECTIVE SHIELD	SQ YD	90	90						
Z0073300	TEMPORARY SHORING AND CRIBBING	L SUM	1	1						

STATE OF ILLINOIS  
DEPARTMENT OF TRANSPORTATION

ROUTE NO.	SECTION	COUNTY	TOTAL SHEETS	SHEET NO.
F.A. 61	531-4HB	COOK	10	5
FED. ROAD DIST. NO. 7		BALANCE	FED. AID PROJECT	

SHEET NO. 1  
3 SHEETS

Contract No. 62865

**GENERAL NOTES**

All structural steel shall conform to AASHTO Classification M-270 Gr. 36, unless otherwise noted.

Plan dimensions and details relative to existing structure have been taken from existing plans and are subject to nominal construction variations. It shall be the Contractor's responsibility to verify such dimensions and details in the field and make necessary approved adjustments prior to construction or ordering of materials. Such variations shall not be cause for additional compensation for a change in the scope of the work, however, the Contractor will be paid for the quantity actually furnished at the unit price bid for the work.

Existing structural steel that will be in contact with new structural steel shall be cleaned and painted prior to erection as required by the Special Provision "Cleaning and Painting Contact Surface Areas of Existing Steel Structures".

The inorganic zinc rich primer/acrylic/acrylic paint system shall be used for shop and field painting of new structural steel except where otherwise noted. The color of the acrylic finish coat shall be Interstate Green, Munsell No. 7.5G 4/8. See Special Provision "Cleaning and Painting New Metal Structures".

The cost of removal and/or re-installation of all members necessary to complete the work as detailed on the plans and as specified in the Special Provisions shall be included in the cost of Furnishing & Erecting Structural Steel.

Any reinforcement bars that are damaged during concrete removal shall be replaced with an approved bar splicer or anchorage system. Cost shall be included in the cost of "Concrete Removal".

Reinforcement bars shall conform to the requirements of AASHTO M 31 or M 322 Grade 60.

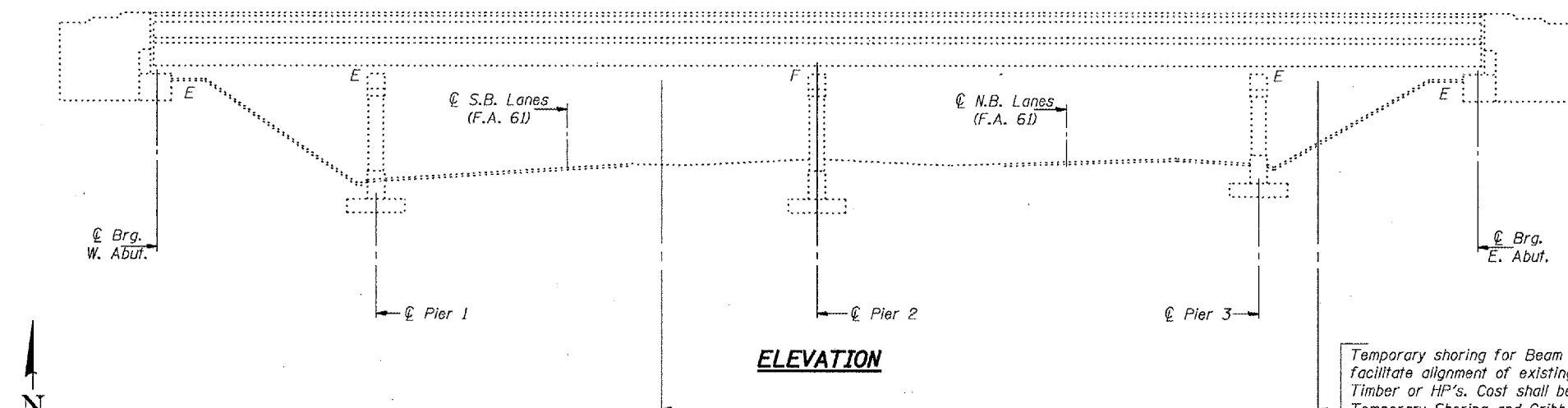
Prior to pouring the new concrete deck, all loose rust, loose mill scale and other loose potentially detrimental foreign material shall be removed from the surfaces of the beams or girders in contact with concrete. The cost of this work will be included in the pay item covering removal of the existing concrete. All heavy rust and other tightly adhered potentially detrimental foreign matter shall also be removed from the surfaces of the beams or girders in contact with concrete. Tightly adhered paint may remain unless otherwise noted. This removal shall be accomplished by methods that will not damage the steel. The cost of this work will be paid for according to Article 109.04 of the Standard Specifications.

The deck surface shall have its final finish tined according to Article 420.11(e)(1) of the Standard Specifications. Cost included with Concrete Superstructure.

**TOTAL BILL OF MATERIAL**

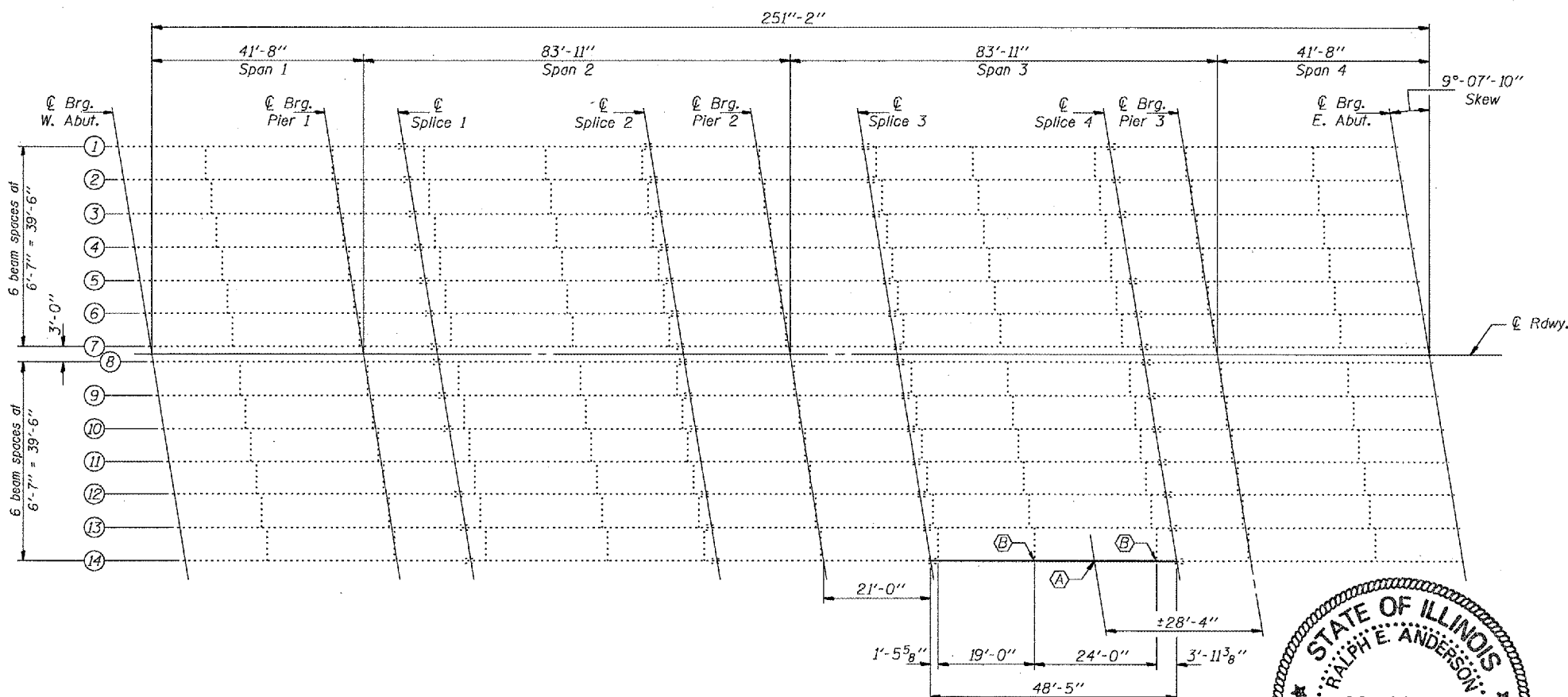
ITEM	UNIT	QUANTITY
Concrete Removal	Cu. Yd.	16.1
Concrete Superstructure	Cu. Yd.	16.1
Reinforcement Bars (Epoxy Coated)	Pound	3480
Structural Steel Removal	Pound	8000
Furnishing & Erecting Structural Steel	Pound	8000
Stud Shear Connectors	Ea.	129
Temporary Shoring & Cribbing	L.S.	1
Removing & Re-Erecting Existing Railing	Foof	65
Protective Shield	Sq. Yd.	90

**BRIDGE REPAIRS**  
**IL. RT. 68 (DUNDEE RD.) OVER**  
**F.A. RTE. 61 (IL. RT. 53) SEC. 531-4HB**  
**COOK COUNTY**  
**S.N. 016-0961**



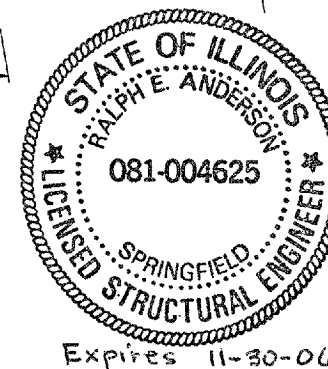
**ELEVATION**

Temporary shoring for Beam 14 may be required to facilitate alignment of existing splices. Use 12" x 12" Timber or HP's. Cost shall be included in the cost of Temporary Shoring and Cribbing. The shoring shall be removed as soon as possible after the splice has been completed to minimize traffic control in the South Bound Lanes.



**FRAMING PLAN**

- (A) Existing Beam to be replaced.
- (B) Remove and replace bottom clip angle

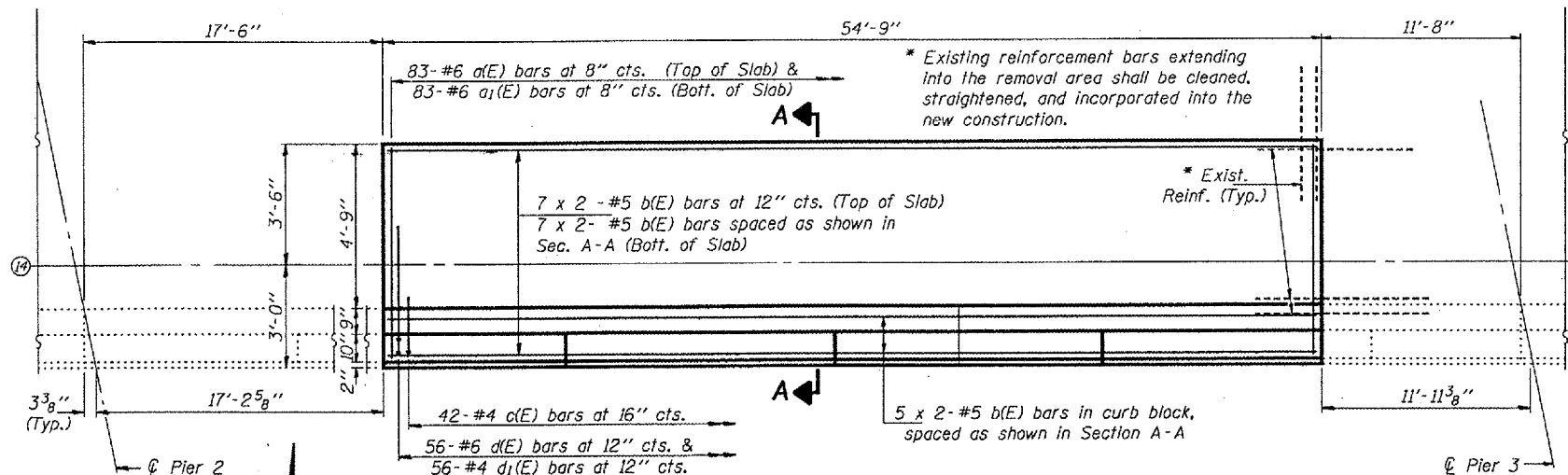


DESIGNED	Victor H. Veliz
CHECKED	[Signature]
DRAWN	baliva
CHECKED	VHV MJT

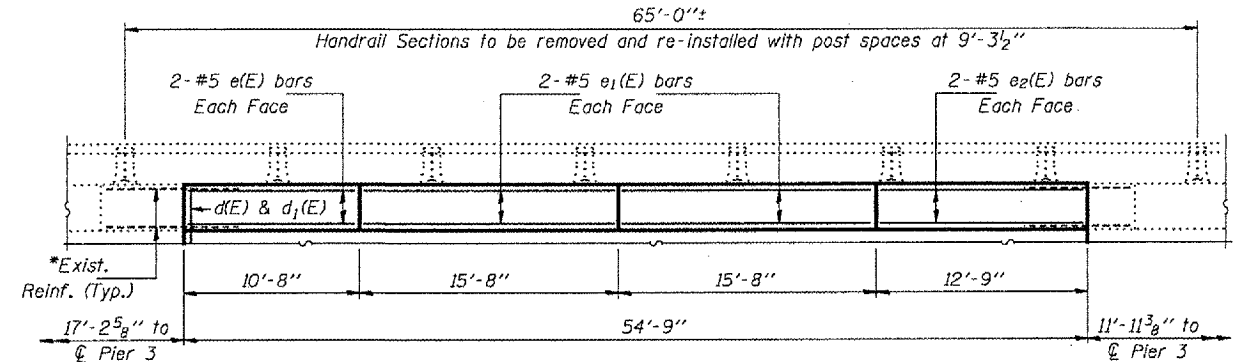
APRIL 11, 2005  
EXAMINED John A. Morris  
ENGINEER OF STRUCTURAL SERVICES  
PASSED Ralph E. Anderson  
ENGINEER OF BRIDGES AND STRUCTURES

STATE OF ILLINOIS  
DEPARTMENT OF TRANSPORTATION

ROUTE NO.	SECTION	COUNTY	TOTAL SHEETS	SHEET	SHEET NO. 2
F.A. 61	531-4HB	COOK	10	4	3 SHEETS
FED. ROAD DIST. NO. 7		ILLINOIS		FED. AID PROJECT-	
Contract No. 62865					

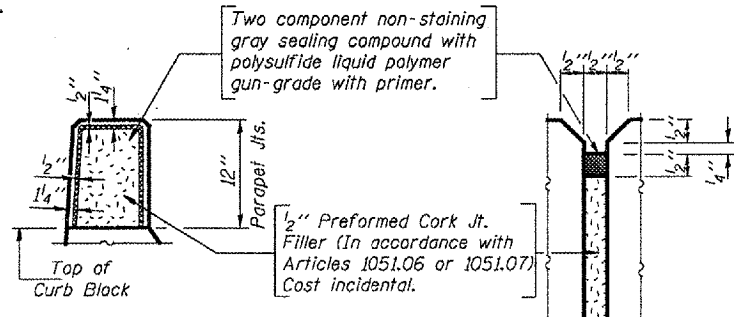


**PARTIAL PLAN  
CONCRETE REMOVAL & REPLACEMENT**  
Perimeters of concrete removal areas shall be saw cut  $\frac{3}{4}$ " into existing  $7\frac{1}{2}$ " deck prior to the removal of concrete.

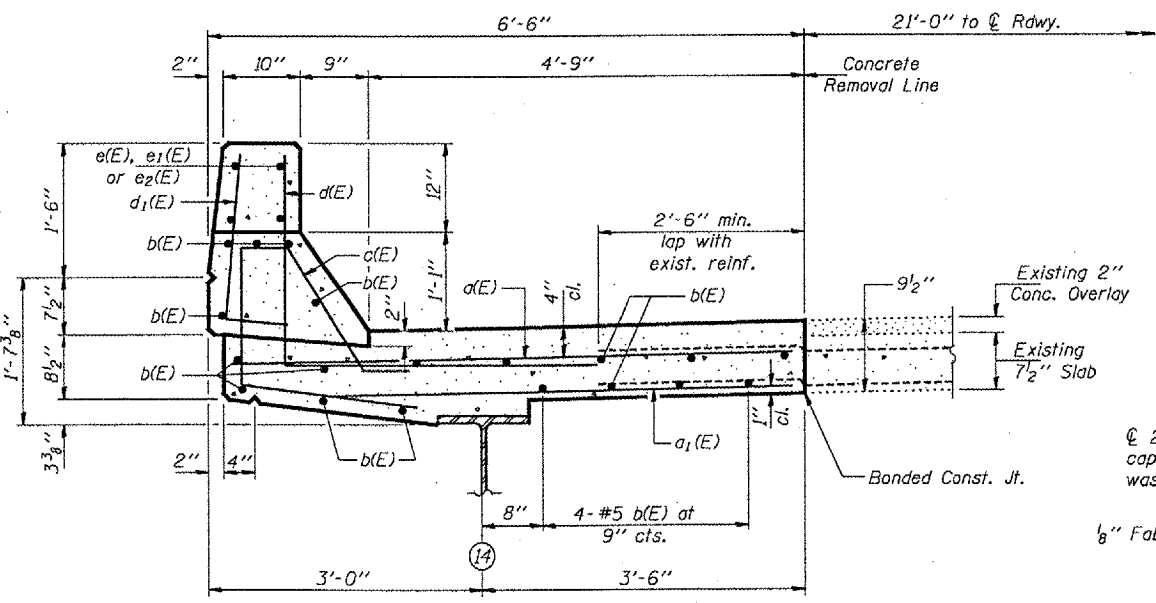


**PARTIAL OUTSIDE ELEVATION  
PARAPET REMOVAL & REPLACEMENT**

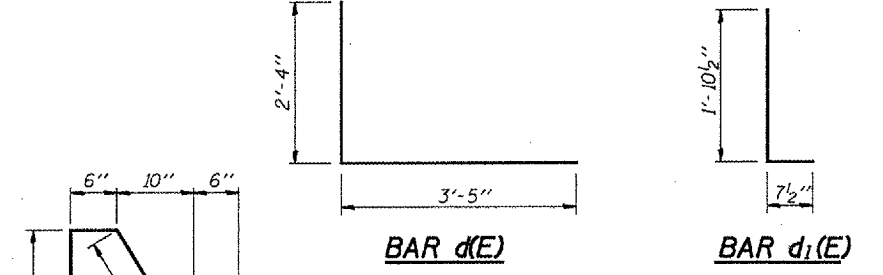
**MIN. BAR LAPS**  
#5 Bar = 1'-8"  
#6 Bar = 1'-8"



**SECTION AT PARAPET**



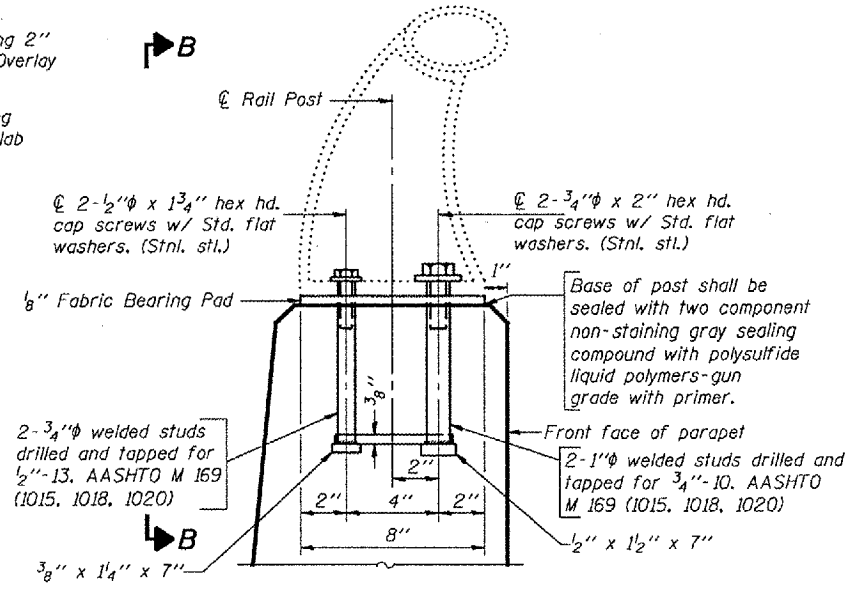
**SECTION A-A**



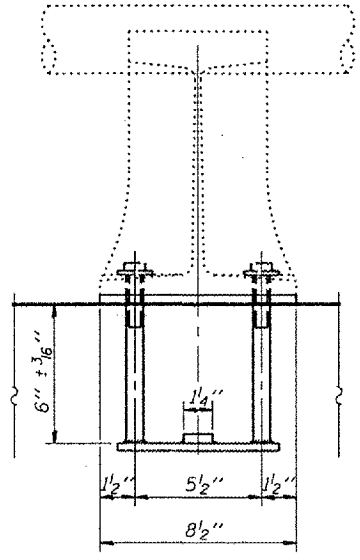
**BILL OF MATERIAL**

Bar	No.	Size	Length	Shape
d(E)	83	#6	6'-2"	—
a1(E)	83	#6	5'-0"	—
b(E)	38	#5	28'-4"	—
c(E)	42	#4	6'-0"	⤴
d(E)	56	#6	5'-9"	L
d1(E)	56	#4	2'-6"	L
e(E)	4	#5	10'-5"	—
e1(E)	8	#5	15'-5"	—
e2(E)	4	#5	12'-6"	—

Concrete Removal Cu. Yd. 16.1  
Concrete Superstructure Cu. Yd. 16.1  
Reinforcement Bars, Epoxy Coated Lbs. 3480  
Reinforcement bars designated (E) shall be epoxy coated.  
Bars indicated thus 1 x 2-#5 etc. indicates 1 line of bars with 2 lengths per line.



**RAIL POST ANCHOR DETAIL**  
(6 Required)



**VIEW B-B**

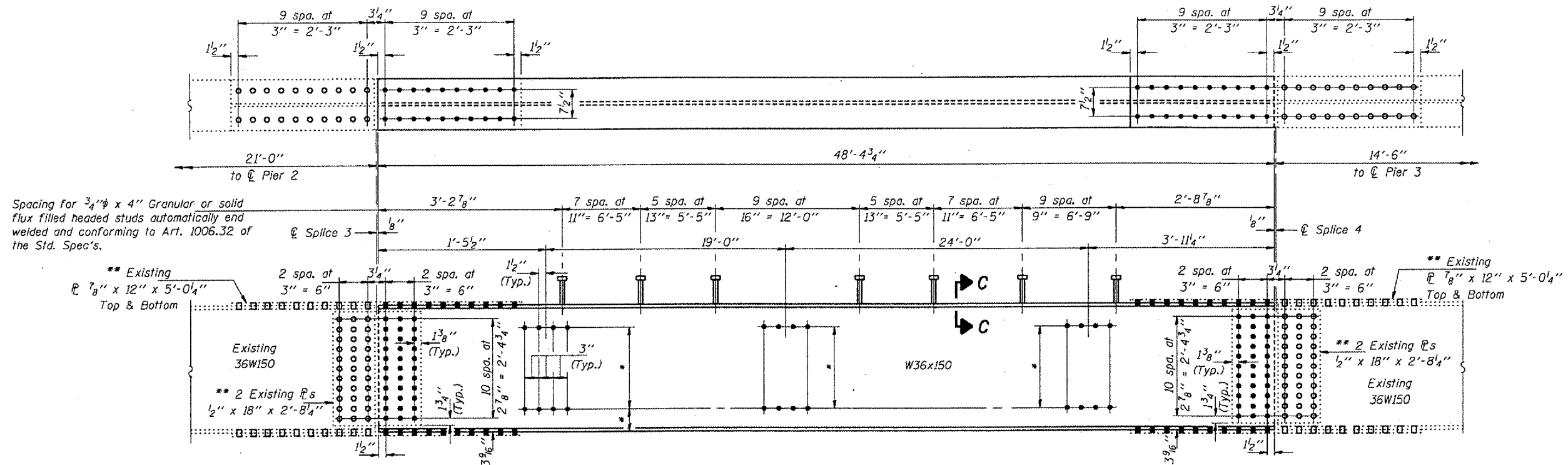
**BRIDGE REPAIRS  
CONCRETE REMOVAL & REPLACEMENT DETAILS  
IL. RT. 68 (DUNDEE RD.) OVER  
F.A. RTE. 61 (IL. RT. 53) SEC. 531-4HB  
COOK COUNTY  
S.N. 016-0961**

DESIGNED	VHV	APRIL 11, 2005
CHECKED	MJT	EXAMINED <i>John A. Morris</i> ENGINEER OF STRUCTURAL SERVICES
DRAWN	baliva	PASSED <i>Ralph E. Anderson</i> ENGINEER OF BRIDGES AND STRUCTURES
CHECKED	VHV MJT	

STATE OF ILLINOIS  
DEPARTMENT OF TRANSPORTATION

ROUTE NO.	SECTION	COUNTY	TOTAL SHEETS	SHEET NO.
F.A. 61	531-4HB	COOK	10	7
FED. ROAD DIST. NO. 7	ILLINOIS	FED. AID PROJECT-	Contract No. 62865	

SHEET NO. 3  
3 SHEETS



Spacing for 3/4" x 4" Granular or solid flux filled headed studs automatically end welded and conforming to Art. 1006.32 of the Std. Spec's.

\*\* Existing 7/8" x 12" x 5'-0 1/4" Top & Bottom

Existing 36W150

\*\* 2 Existing R's 1/2" x 18" x 2'-8 1/4"

\*\* Existing 7/8" x 12" x 5'-0 1/4" Top & Bottom

\*\* 2 Existing R's 1/2" x 18" x 2'-8 1/4"

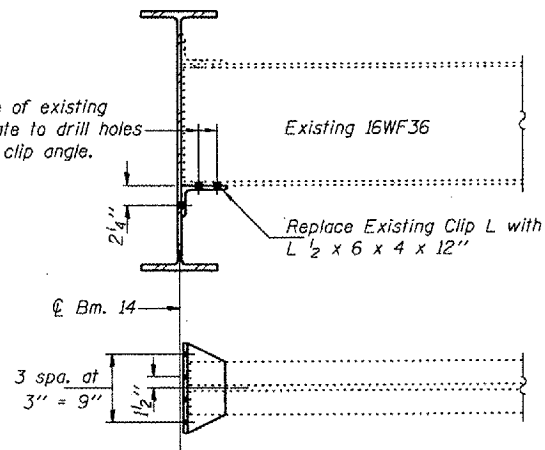
Existing 36W150

ELEVATION BEAM 14

\*\* Exist. R's to be matched marked, removed and reused.

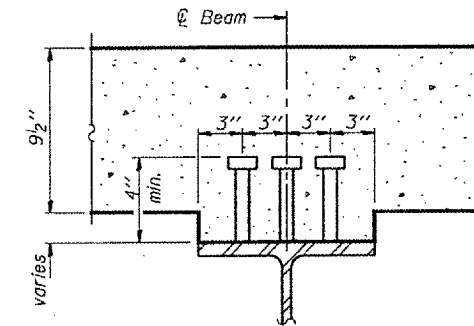
\* Holes to be located and drilled in field.

Use bottom flange of existing diaphragm as template to drill holes in horizontal leg of clip angle.



REPAIR B

No. Req'd.: Two (2) Clip L's



SECTION C-C

Notes: Natural camber of new beam shall be placed upward for fabrication. Fasteners shall be high strength bolts. Flange splice holes shall be 1 5/16" for 7/8" bolts. Web splice holes shall be 3/16" for 3/4" bolts. Diaphragm connection holes shall be 5/16" for 3/4" bolts. Two hardened washers shall be required at diaphragm connections.

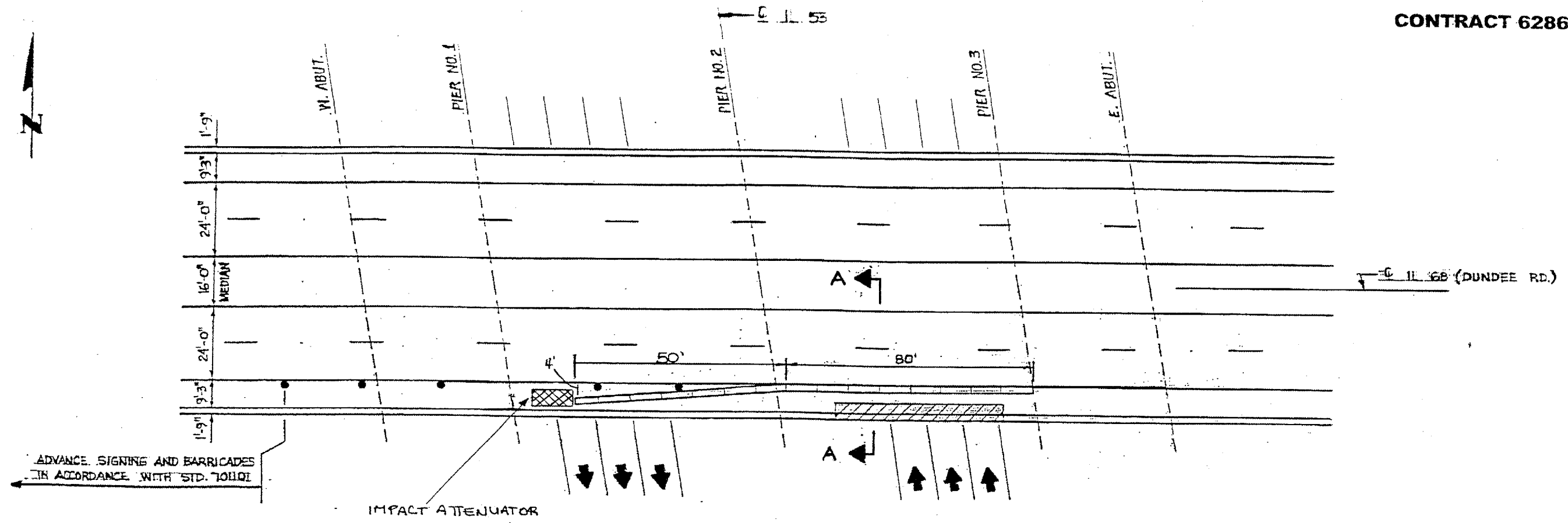
DESIGNED	VHV
CHECKED	MJT
DRAWN	baliva
CHECKED	VHV MJT

APRIL 11, 2005  
EXAMINED *John A. Morris*  
ENGINEER OF STRUCTURAL SERVICES  
PASSED *Ralph E. Anderson*  
ENGINEER OF BRIDGES AND STRUCTURES

BRIDGE REPAIRS  
IL. RT. 68 (DUNDEE RD.) OVER  
F.A. RTE. 61 (IL. RT. 53) SEC. 531-4HB  
COOK COUNTY  
S.N. 016-0961

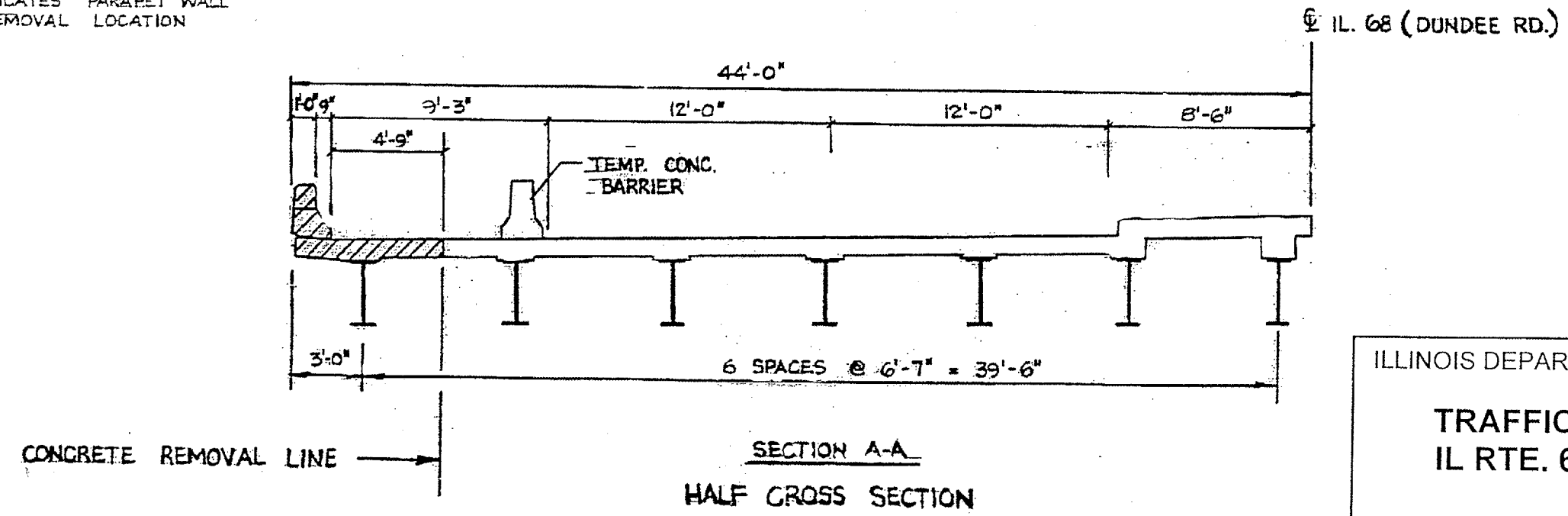
ROUTE	SECTION	COUNTY	TOTAL SHEETS	SHEET NUMBER
FAP 343	531-4HBK-I-2	COOK	10	8

CONTRACT 62865



- INDICATES PARAPET WALL REMOVAL LOCATION

PLAN



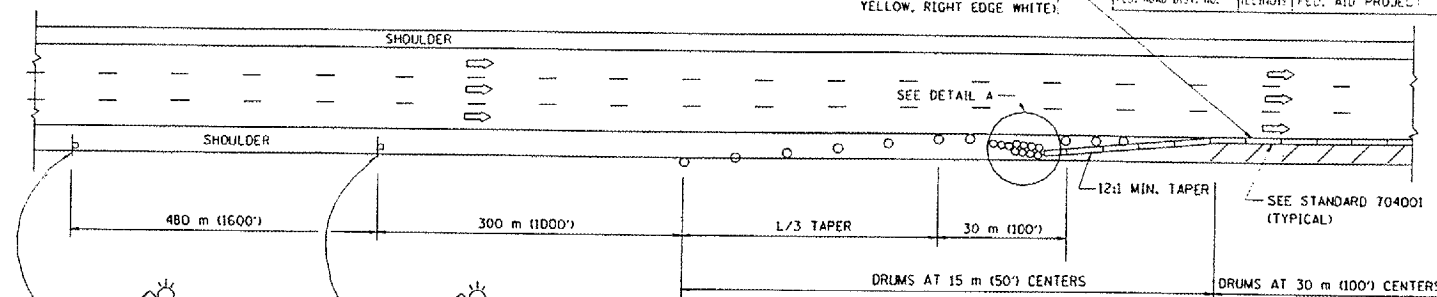
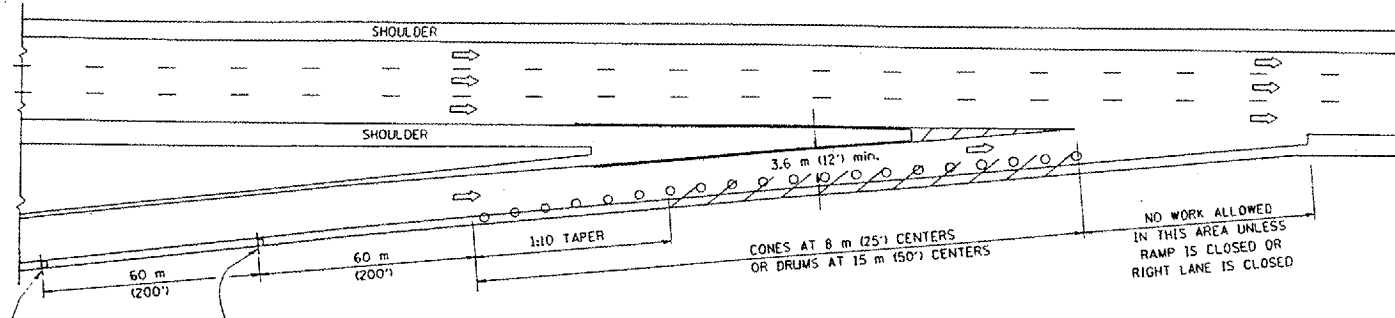
ILLINOIS DEPARTMENT OF TRANSPORTATION  
TRAFFIC CONTROL PLANS  
IL RTE. 68 OVER IL RTE. 53



F.A. BTE.	SECTION:	COUNT:	TOTAL SHEETS	SHEET NO.
			10	9
STA.	TO STA.			
FED. ROAD DIST. NO.	ILLINOIS	FED. AID PROJECT		

PARTIAL RAMP CLOSURE DETAILS

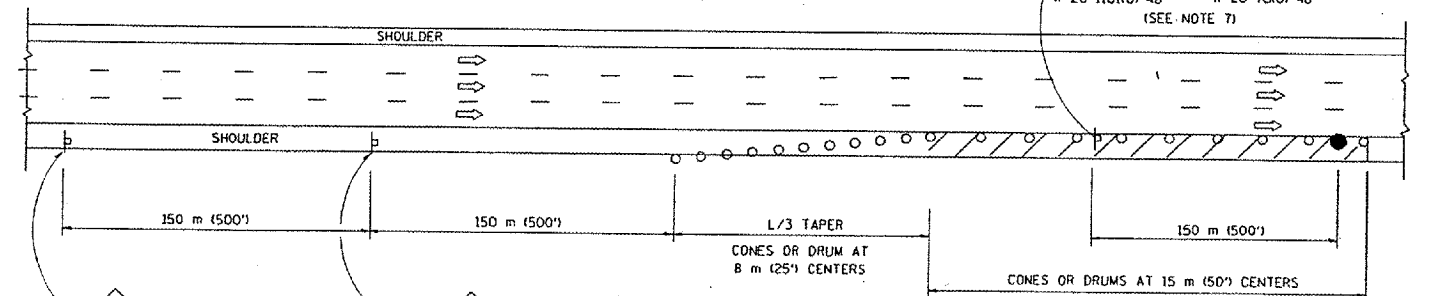
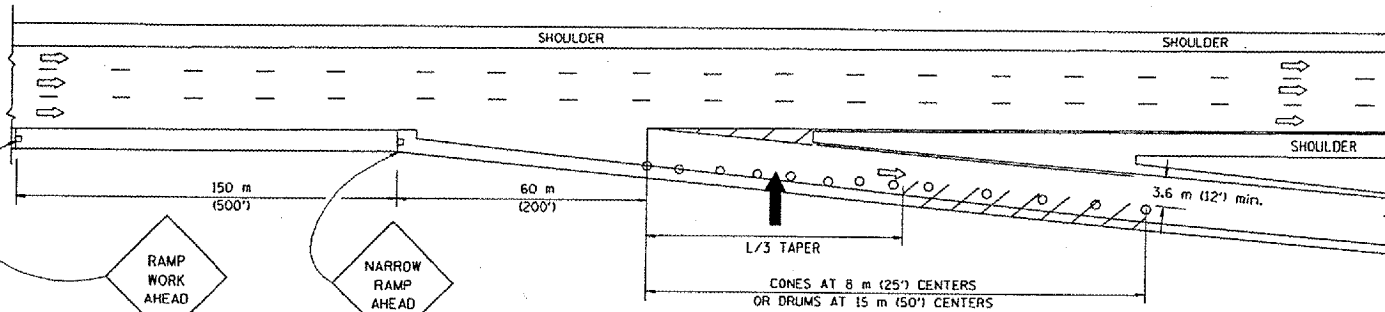
SHOULDER CLOSURE DETAILS



TYPICAL ENTRANCE RAMP

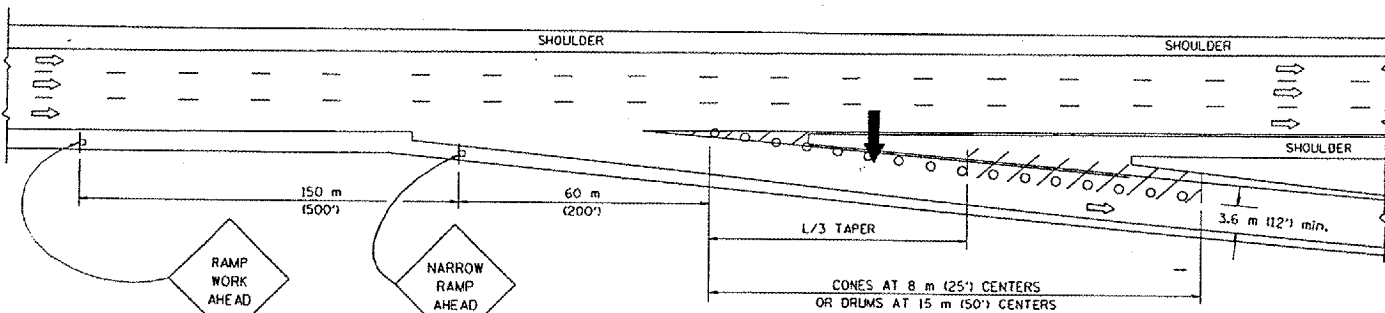
PERMANENT SHOULDER CLOSURE

OR WHEN SPECIFIED INSTALL TEMPORARY CONCRETE BARRIER WALL WITH BARRIER WALL REFLECTORS PER STANDARD 701402, DETAIL A.



TYPICAL EXIT RAMP

DAYTIME SHOULDER CLOSURE



TYPICAL EXIT RAMP

SYMBOLS

- ARROWBOARD
- WORK AREA
- SIGN ON PORTABLE OR PERMANENT SUPPORT
- FLAGGER WITH CONTROL SIGN
- DRUM WITH MONO-DIRECTIONAL STEADY BURNING LIGHT
- CONES - 700 (28) IN HEIGHT

GENERAL NOTES

1. THE "L" DISTANCE EQUALS:  

SPEED LIMIT	FORMULAS
80 km/h (45 mph) OR GREATER:	METRIC ENGLISH
	$L=0.65(WX)S$ $L=(WXS)$
W = WIDTH OF OFFSET IN METERS (FEET)	
S = NORMAL POSTED SPEED KM/H (MPH)	
2. PLASTIC DRUMS WITH HIGH PERFORMANCE REFLECTIVE SHEETING AND STEADY BURNING LIGHTS ARE REQUIRED FOR ALL NIGHTTIME CLOSURES.
3. ALL SIGNS SHALL BE POST MOUNTED IF THE CLOSURE TIME EXCEEDS FOUR DAYS.
4. FLASHING LIGHTS SHALL BE USED DURING THE HOURS OF DARKNESS AND SHALL BE INSTALLED ABOVE THE FIRST TWO SETS OF SIGNS.

5. THE IMPACT ATTENUATOR, TEMPORARY IS NOT REQUIRED WHEN THE TEMPORARY CONCRETE BARRIER WALL IS OUTSIDE THE CLEAR ZONE OR IS TIED INTO THE EXISTING GUARDRAIL. IF OFFSET IS LESS THAN 5 FEET USE "TRAFFIC BARRIER TERMINAL, TYPE III, TEMPORARY" DEVICE TO MEET NCHRP350 FOR POSTED SPEED.
6. AUTHORIZATION FROM THE DISTRICT'S BUREAU OF TRAFFIC IS REQUIRED FOR ALL FREEWAY CLOSURES.
7. THE FLAGGER AND FLAGGER SIGN ARE REQUIRED AT THE ABOVE WORK SITES WHEN:
  - a. FOUR OR MORE WORK VEHICLES ENTER THE TRAFFIC LANES IN A ONE HOUR PERIOD.
  - d. THE WORK ACTIVITY REQUIRES FREQUENT ENCRDACHMENT INTO THE LANE OPEN TO TRAFFIC.
 THE FLAGGER SHALL BE STATIONED APPROXIMATELY 30 m (100') TO 60 m (200') IN ADVANCE OF THE WORKERS.

ARRAY DESIGN PER MANUFACTURER TO BE NCHRP 350 COMPLIANT FOR POSTED SPEED.

DETAIL "A"  
IMPACT ATTENUATOR, TEMPORARY  
(SEE NOTE 5)

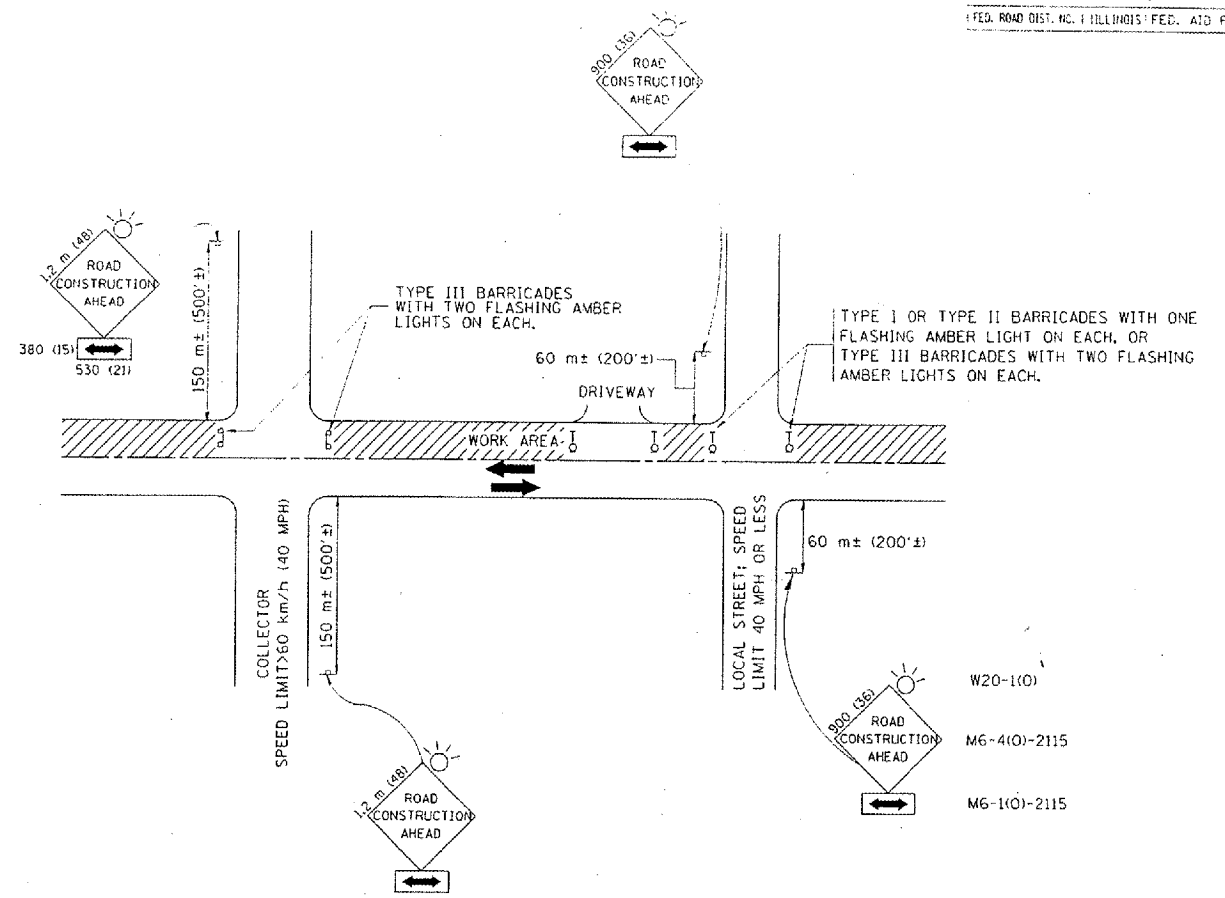
ALL DIMENSIONS ARE IN MILLIMETERS (INCHES) UNLESS OTHERWISE SHOWN.

ILLINOIS DEPARTMENT OF TRANSPORTATION

TRAFFIC CONTROL DETAILS FOR FREEWAY SHOULDER CLOSURES PARTIAL RAMP CLOSURES

REVISIONS	
NAME	DATE
DWS	11/96
JAF	12/02
NCHRP 350	04/03

SCALE: NONE  
DATE: 05/06/2003  
DRAWN BY: DESIGNED BY: DWS  
CHECKED BY: TC-17



TRAFFIC CONTROL AND PROTECTION FOR SIDE ROADS, INTERSECTIONS, AND DRIVEWAYS

NOTES:

A. FOR NO LANE RESTRICTION ON THE SIDE ROAD OR DRIVEWAYS

- SIDE ROAD WITH A SPEED LIMIT OF 60 km/h (40 MPH) OR LESS AS SHOWN ON THE DRAWING AND AS DIRECTED BY THE ENGINEER:
  - ONE ROAD CONSTRUCTION AHEAD SIGN 900x900 (36x36) WITH A FLASHER AND FLAG MOUNTED ON IT APPROXIMATELY 60 m (200') IN ADVANCE OF THE MAIN ROUTE.
  - THE CLOSED PORTION OF THE MAIN ROUTE SHALL BE PROTECTED BY BLOCKING WITH TYPE I, TYPE II OR TYPE III BARRICADES, 1/3 OF THE CROSS SECTION OF THE CLOSED PORTION.
- SIDE ROAD WITH A SPEED LIMIT GREATER THAN 60 km/h (40 MPH) AS SHOWN ON THE DRAWING AND AS DIRECTED BY THE ENGINEER:
  - ONE ROAD CONSTRUCTION AHEAD SIGN 1.2 m x 1.2 m (48x48) WITH A FLASHER MOUNTED ON IT APPROXIMATELY 150 m (500') IN ADVANCE OF THE MAIN ROUTE.
  - THE CLOSED PORTION OF THE MAIN ROUTE SHALL BE PROTECTED BY BLOCKING WITH TYPE III BARRICADES, 1/2 OF THE CROSS SECTION OF THE CLOSED PORTION.
- WHEN THE SIDE ROAD LIES BETWEEN THE BEGINNING OF THE MAINLINE SIGNING AND THE WORK ZONE, A SINGLE HEADED ARROW (M6-1) SHALL BE USED IN LIEU OF THE DOUBLE HEADED ARROW (M6-4).

B. FOR A LANE CLOSURE ON A SIDE ROAD OR DRIVEWAY:

- USE APPLICABLE PORTIONS OF THE TYPICAL APPLICATION OF TRAFFIC CONTROL DEVICES (STD. 701501, STD. 701606 OR THE APPROPRIATE STANDARD). THE SPACING OF SIGNS AND BARRICADES SHALL BE ADJUSTED FOR FIELD CONDITIONS AS DIRECTED BY THE ENGINEER. THE DIRECTIONAL ARROW SHALL BE COVERED OR REMOVED WHEN NO LONGER CONSISTENT WITH THE SIDE ROAD LANE CLOSURE.
- C. ADVANCE WARNING SIGNS ARE TO BE OMITTED ON DRIVEWAY UNLESS OTHERWISE NOTED.
- D. THE TRAFFIC CONTROL AND PROTECTION FOR SIDE ROADS, INTERSECTIONS, AND DRIVEWAYS SHALL BE INCIDENTAL TO THE COST OF SPECIFIED TRAFFIC CONTROL STANDARDS OR ITEMS.

REVISIONS	
NAME	DATE
LHA	6/89
T. RAMMACHER	09/08/94
J. OBERLE	10/18/95
A. HOUSEH	03/06/96
A. HOUSEH	10/15/96
T. RAMMACHER	01/06/00

ILLINOIS DEPARTMENT OF TRANSPORTATION  
 TRAFFIC CONTROL AND PROTECTION  
 FOR  
 SIDE ROADS, INTERSECTIONS, AND  
 DRIVEWAYS

SCALE: VERT. \_\_\_\_\_  
 HORIZ. \_\_\_\_\_  
 DATE 10/15/2002

DRAWN BY \_\_\_\_\_  
 CHECKED BY \_\_\_\_\_  
 TC-10