

62807

F. A. RTE	SECTION	COUNTY	TOTAL SHEETS	SHEET NO
90/94	*	COOK	37	22
STA. 151+70	TO STA. 161+10			
FED. ROAD DIST NO. 1	ILLINOIS	FED AID PROJECTS		

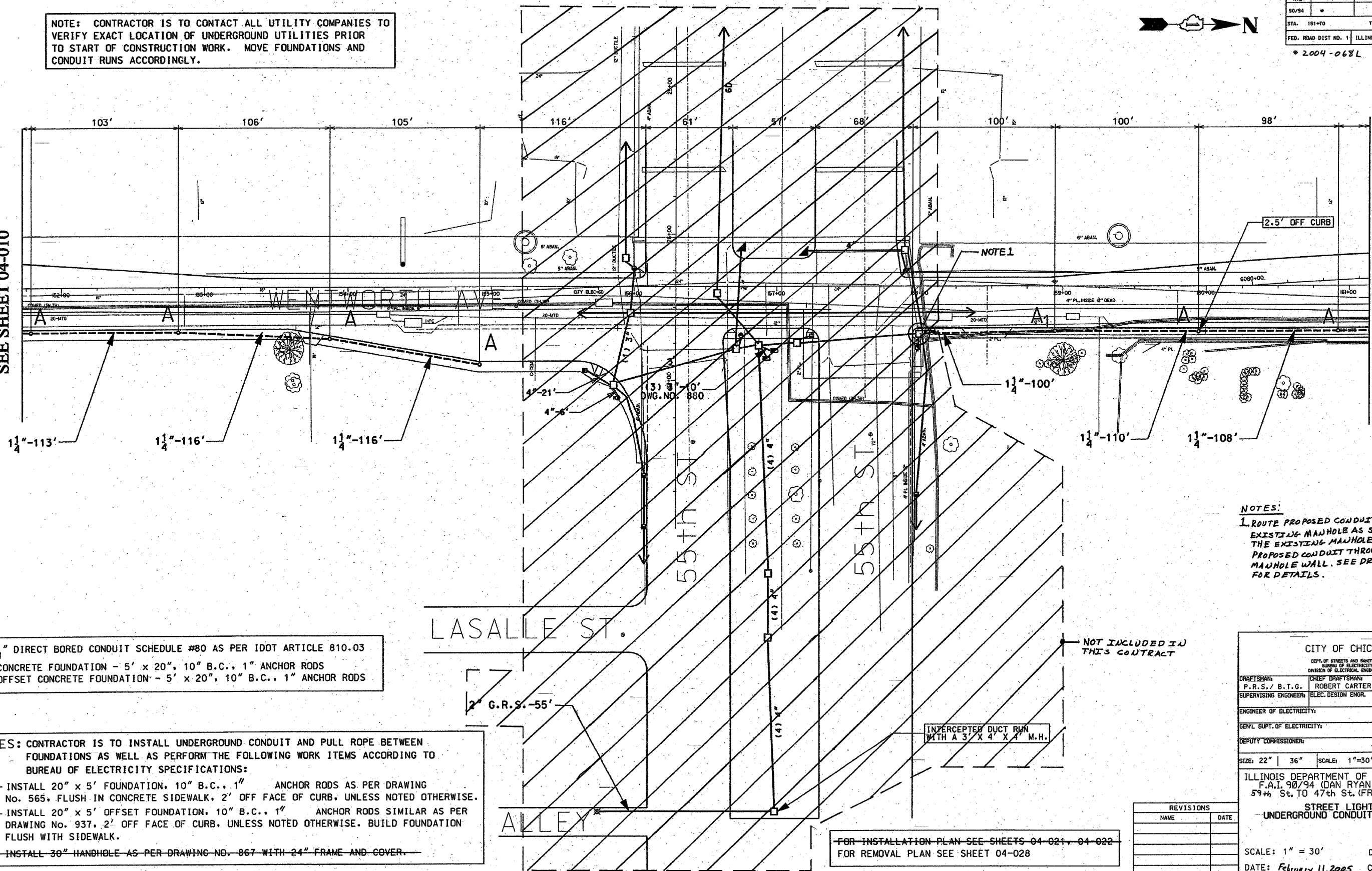
\* 2004-068L

NOTE: CONTRACTOR IS TO CONTACT ALL UTILITY COMPANIES TO VERIFY EXACT LOCATION OF UNDERGROUND UTILITIES PRIOR TO START OF CONSTRUCTION WORK. MOVE FOUNDATIONS AND CONDUIT RUNS ACCORDINGLY.



MATCH LINE  
STATION 151+70  
SEE SHEET 04-010

MATCH LINE  
STATION 161+10  
SEE SHEET 04-012



1 1/4" DIRECT BORED CONDUIT SCHEDULE #80 AS PER IDOT ARTICLE 810.03  
 CONCRETE FOUNDATION - 5' x 20", 10" B.C., 1" ANCHOR RODS  
 OFFSET CONCRETE FOUNDATION - 5' x 20", 10" B.C., 1" ANCHOR RODS

NOTES: CONTRACTOR IS TO INSTALL UNDERGROUND CONDUIT AND PULL ROPE BETWEEN FOUNDATIONS AS WELL AS PERFORM THE FOLLOWING WORK ITEMS ACCORDING TO BUREAU OF ELECTRICITY SPECIFICATIONS:  
 "A"- INSTALL 20" x 5' FOUNDATION, 10" B.C., 1" ANCHOR RODS AS PER DRAWING No. 565, FLUSH IN CONCRETE SIDEWALK, 2' OFF FACE OF CURB, UNLESS NOTED OTHERWISE.  
 "A<sub>1</sub>"- INSTALL 20" x 5' OFFSET FOUNDATION, 10" B.C., 1" ANCHOR RODS SIMILAR AS PER DRAWING No. 937, 2' OFF FACE OF CURB, UNLESS NOTED OTHERWISE. BUILD FOUNDATION FLUSH WITH SIDEWALK.  
 "B"- INSTALL 30" HANDBOLE AS PER DRAWING NO. 867 WITH 24" FRAME AND COVER.

NOTES:  
 1. ROUTE PROPOSED CONDUIT RUN TO THE EXISTING MANHOLE AS SHOWN. DRILL THE EXISTING MANHOLE AND INSTALL PROPOSED CONDUIT THROUGH THE MANHOLE WALL. SEE DRAWING BOE-2 FOR DETAILS.

NOT INCLUDED IN THIS CONTRACT

INTERCEPTED DUCT RUN WITH A 3' X 4' X 4' M.H.

FOR INSTALLATION PLAN SEE SHEETS 04-021, 04-022  
 FOR REMOVAL PLAN SEE SHEET 04-028

CITY OF CHICAGO			
DEPT. OF STREETS AND SANITATION			
BUREAU OF ELECTRICITY			
DIVISION OF ELECTRICAL ENGINEERING			
DRAFTSMAN:	CHIEF DRAFTSMAN:	ENGINEER:	
P.R.S./ B.T.G.	ROBERT CARTER	P.R.S./ B.T.G.	
SUPERVISING ENGINEER:	ELEC. DESIGN ENGR.	DWG. NO.	
ENGINEER OF ELECTRICITY:		04-011	
GEN'L SUPT. OF ELECTRICITY:		DEPUTY COMMISSIONER:	
SIZE: 22"   36"	SCALE: 1"=30'	DATE: 1/20/04	

ILLINOIS DEPARTMENT OF TRANSPORTATION  
 F.A.I. 90/94 (DAN RYAN EXPRESSWAY)  
 59th St. TO 47th St. (FRONTAGE ROADS)

STREET LIGHTING  
 UNDERGROUND CONDUIT FACILITIES  
 SCALE: 1" = 30'  
 DATE: February 11, 2005  
 DRAWN BY: B.T.G.  
 CHECKED BY: O.L.

REVISIONS	
NAME	DATE