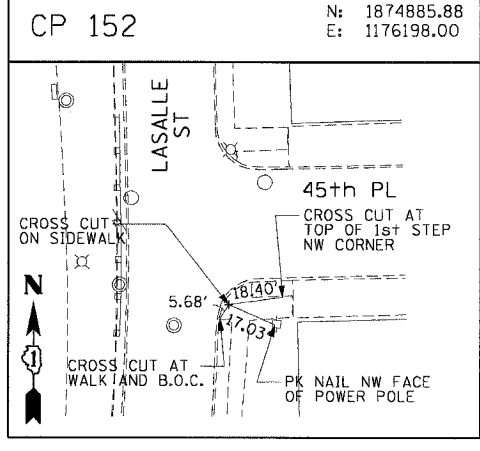
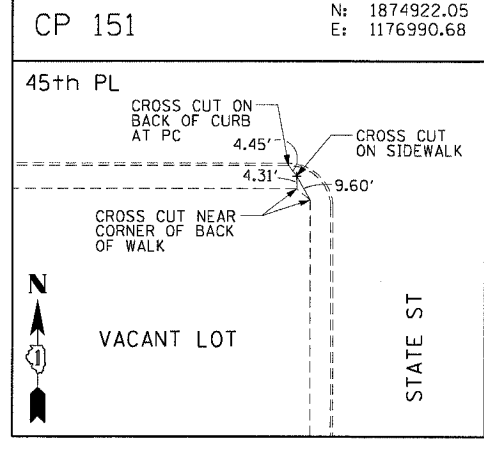
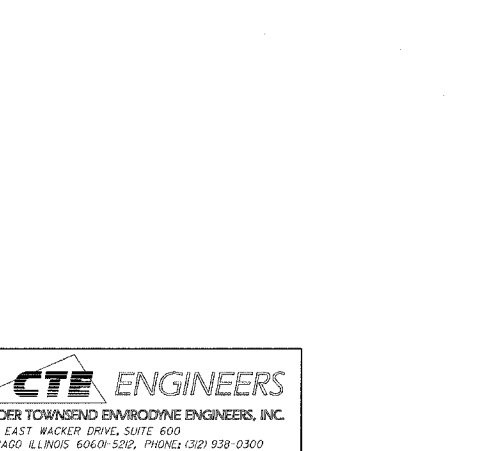
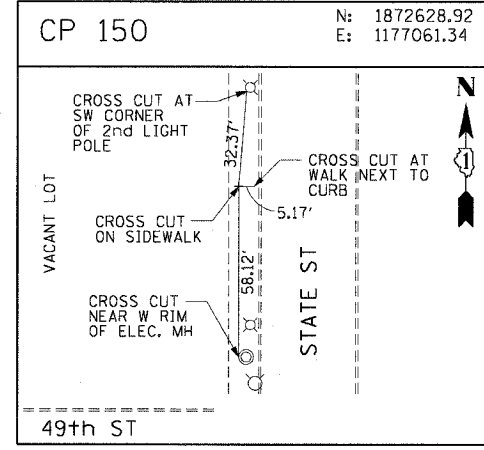
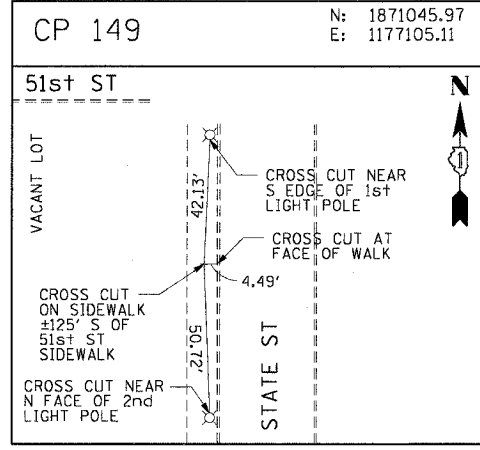
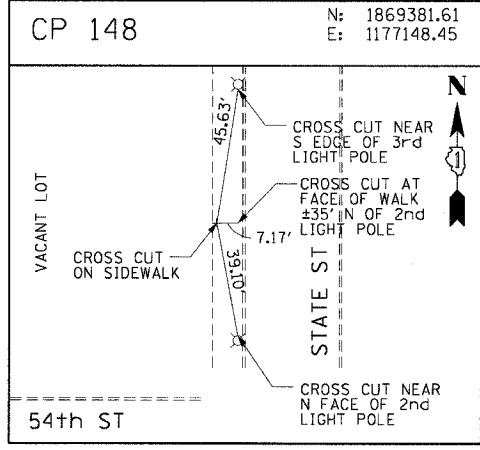
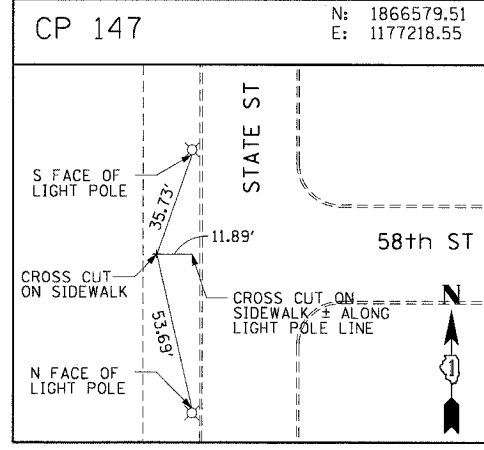
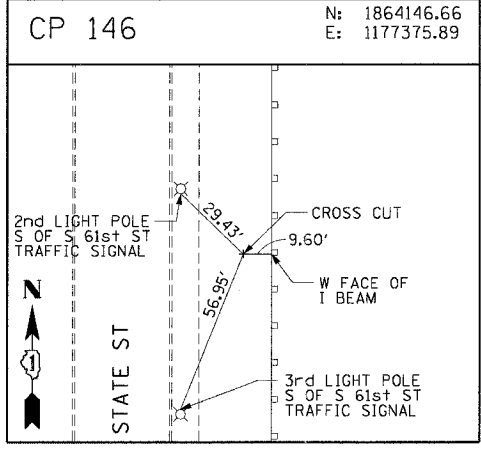
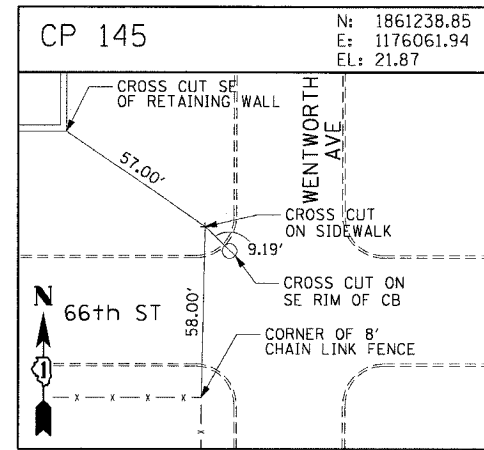
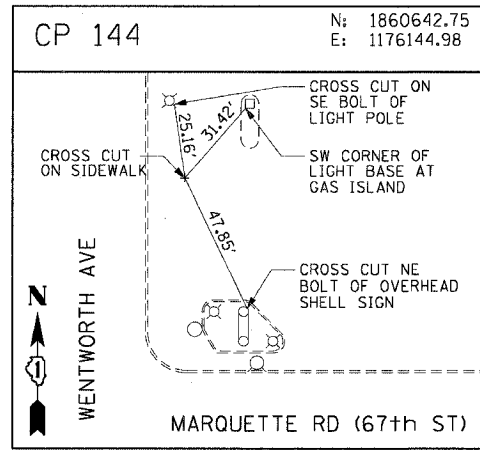
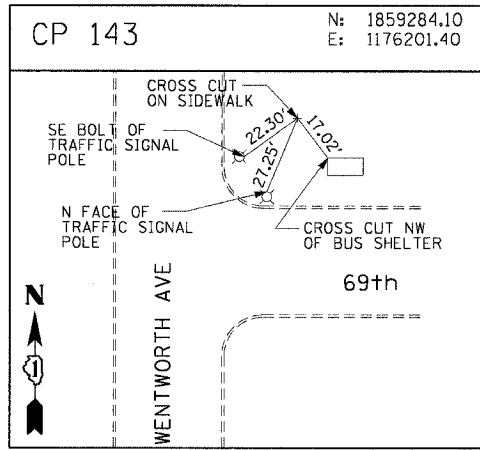
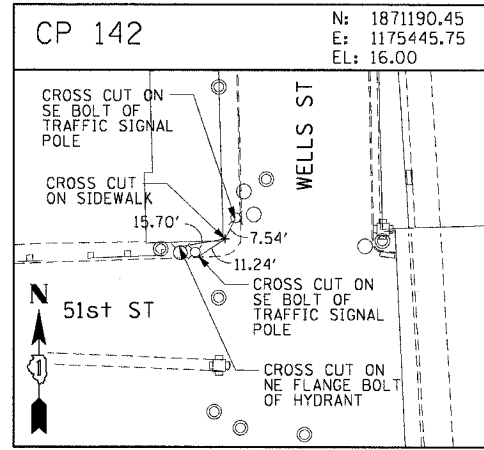
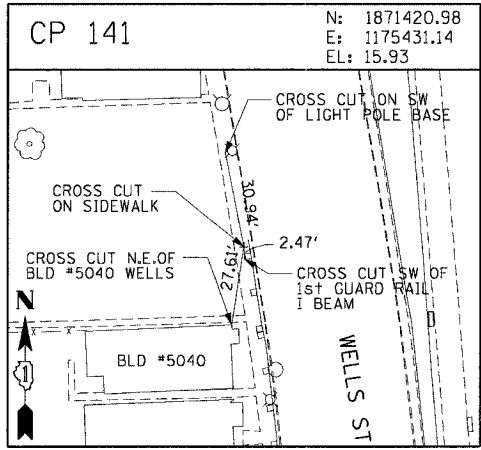
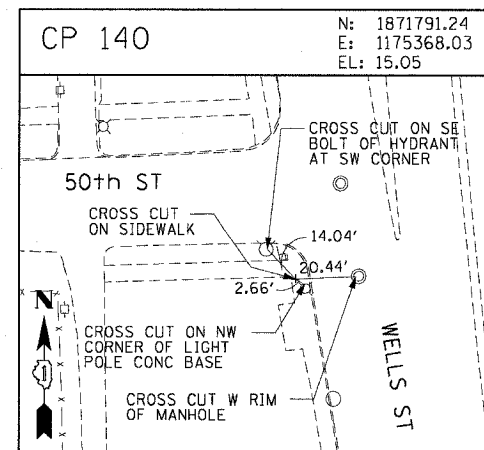
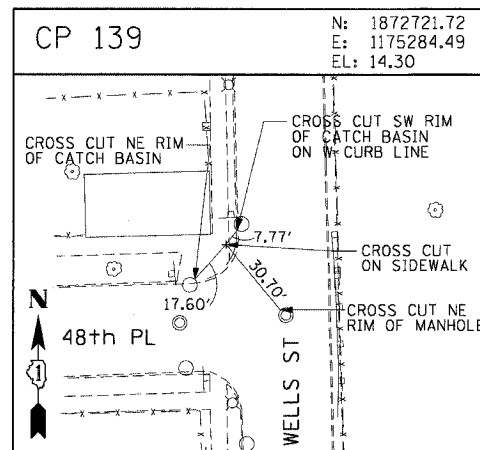
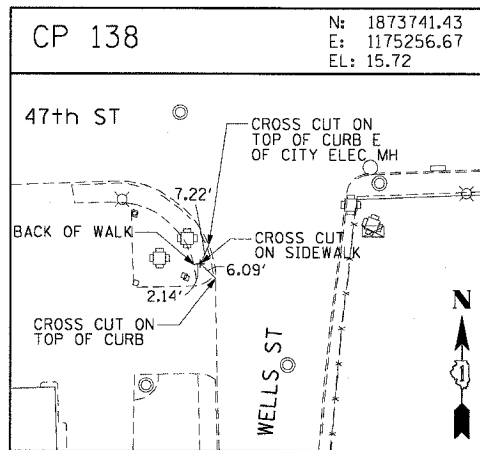
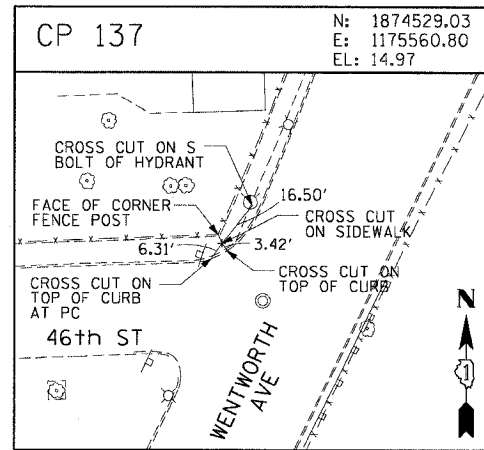
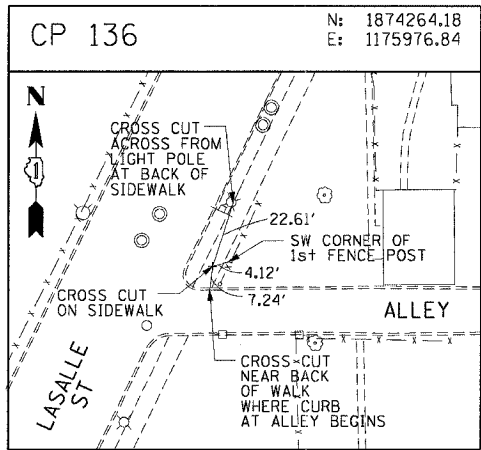


F.A.I. RTE.	SECTION	COUNTY	TOTAL SHEETS	SHEET NO.
90/94	2004-06BL	COOK	37	18
STA.	TO STA.			
FED. ROAD DIST. NO. 1 ILLINOIS FED. AID PROJECT				
62807				



REVISIONS	
NAME	DATE

ILLINOIS DEPARTMENT OF TRANSPORTATION  
 F.A.I. 90/94 (DAN RYAN EXPRESSWAY)  
 59th ST TO 47th ST (FRONTAGE ROAD)  
 CITY OF CHICAGO LIGHTING CONDUIT & FOUNDATIONS  
 WENTWORTH AVENUE

**SURVEY TIES AND CONTROL POINTS**

SCALE: 1"=30'  
 DATE: February 11, 2005  
 DRAWN BY: MRK  
 CHECKED BY: JAL

\utrecht\m\1\040468\040468\electrical\contract\90\3\0909\90302a.dwg 09/09/06 AM