

FAU	SECTION	COUNTY	TOTAL SHEETS	SHEET NO.
3578	1314 RS-3	COOK	23	1

CONTRACT 62673

STATE OF ILLINOIS
DEPARTMENT OF TRANSPORTATION
DIVISION OF HIGHWAYS

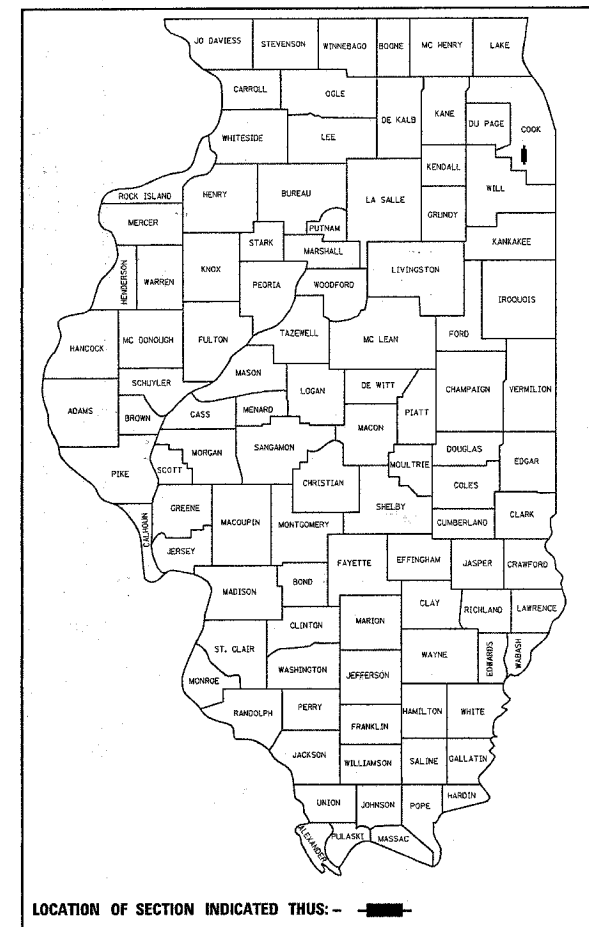
PLANS FOR PROPOSED HIGHWAY

FAU 3578: SOUTHWEST HWY
IL 43 (HARLEM AVE) TO RIDGELAND AVE
SECTION: 1314 RS-3
RESURFACING (MAINTENANCE)
COOK COUNTY
C-91-036-04

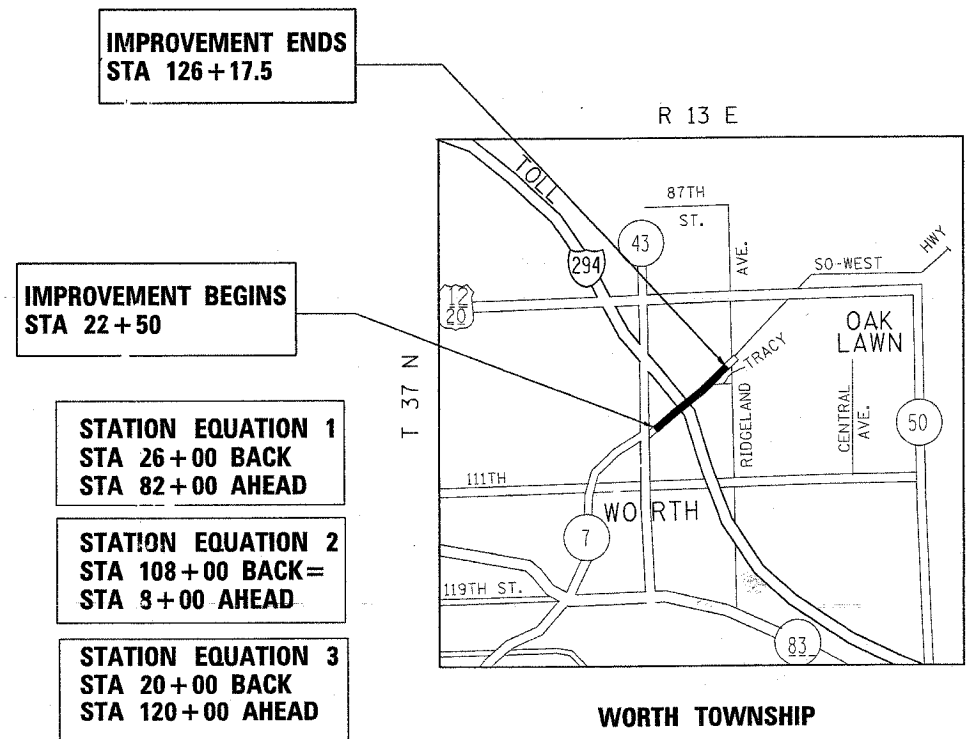
FOR INDEX OF SHEETS, SEE SHEET NO. 2

THE IMPROVEMENT IS LOCATED IN THE VILLAGES OF CHICAGO RIDGE AND WORTH

D-91-036-04



LOCATION OF SECTION INDICATED THUS: - ■ -



IMPROVEMENT ENDS
STA 126+17.5

IMPROVEMENT BEGINS
STA 22+50

STATION EQUATION 1
STA 26+00 BACK
STA 82+00 AHEAD

STATION EQUATION 2
STA 108+00 BACK =
STA 8+00 AHEAD

STATION EQUATION 3
STA 20+00 BACK
STA 120+00 AHEAD

TRAFFIC DATA

2002 ADT = 27400
POSTED SPEED LIMIT = 40 MPH

STATE OF ILLINOIS
DEPARTMENT OF TRANSPORTATION
DIVISION OF HIGHWAYS

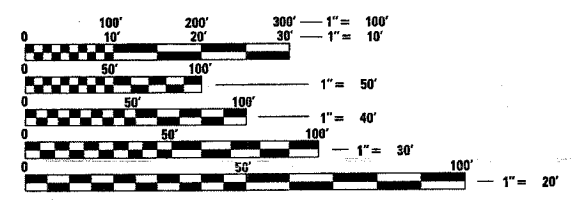
SUBMITTED March 29, 20 05
Dina O'Keefe
DEPUTY DIRECTOR OF HIGHWAYS, REGION ENGINEER

May 13, 20 05
Mike Hine
ENGINEER OF DESIGN AND ENVIRONMENT

May 13, 20 05
Victor Modesto
DIRECTOR OF HIGHWAYS, CHIEF ENGINEER

PRINTED BY THE AUTHORITY
OF THE STATE OF ILLINOIS

GROSS AND NET LENGTH OF IMPROVEMENT = 4768 FEET = 0.90 MILES



FULL SIZE PLANS HAVE BEEN PREPARED USING STANDARD ENGINEERING SCALES. REDUCED SIZED PLANS WILL NOT CONFORM TO STANDARD SCALES. IN MAKING MEASUREMENTS ON REDUCED PLANS, THE ABOVE SCALES MAY BE USED.

J.U.L.I.E.
JOINT UTILITY LOCATION INFORMATION FOR EXCAVATION
1-800-892-0123

CONTRACT NO. 62673

DISTRICT ONE DESIGN PLAN PREPARATION ENGINEER:
KEN ENG/JENPAI CHANG (847)705-4432