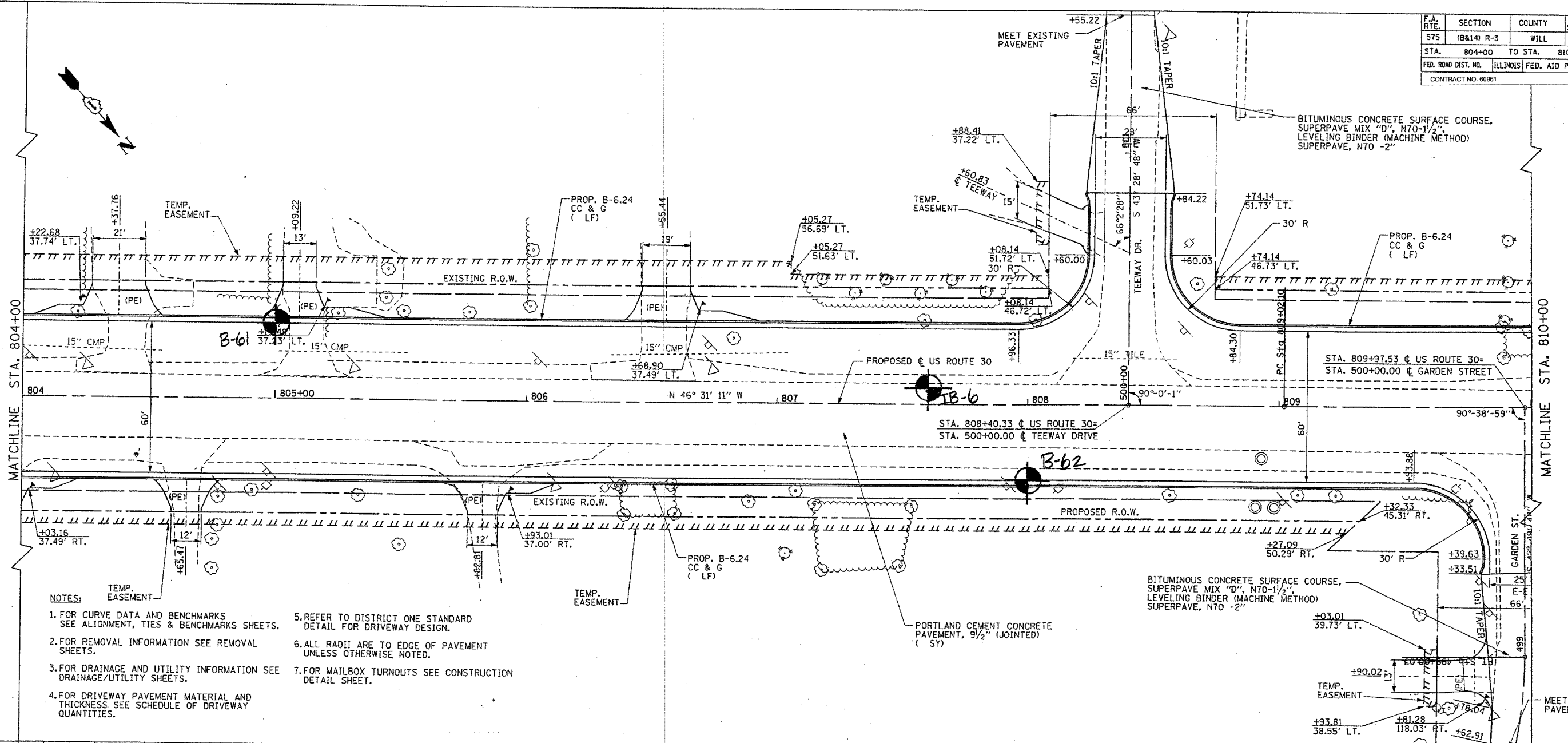


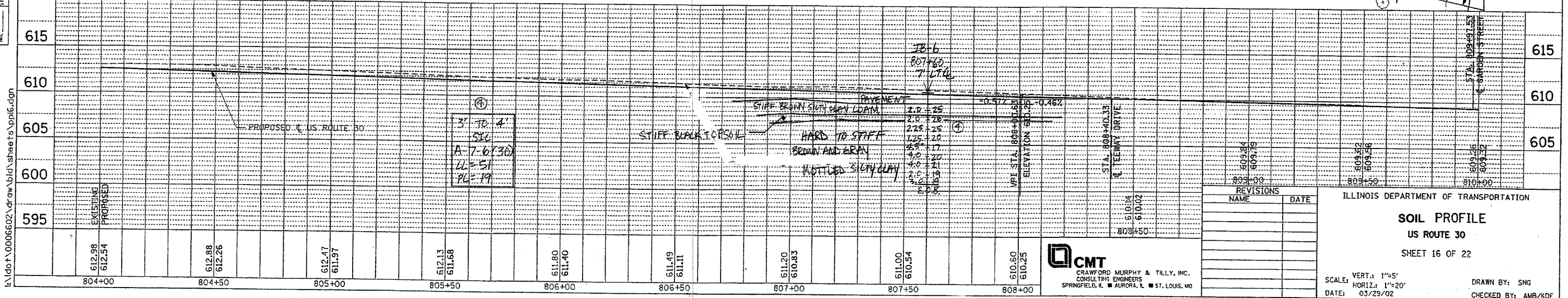
PLAN	DATE	BY
DATE		
BY		
CHECKED		
DATE		
BY		
NO.		

DATE	BY

F.A. RTE.	SECTION	COUNTY	TOTAL SHEETS	SHEET NO.
575	(B&I) R-3	WILL	390	380
STA.	804+00	TO STA.	810+00	
FED. ROAD DIST. NO.	ILLINOIS	FED. AID PROJECT		
CONTRACT NO. 60961				



- NOTES:
- 1. FOR CURVE DATA AND BENCHMARKS SEE ALIGNMENT, TIES & BENCHMARKS SHEETS.
 - 2. FOR REMOVAL INFORMATION SEE REMOVAL SHEETS.
 - 3. FOR DRAINAGE AND UTILITY INFORMATION SEE DRAINAGE/UTILITY SHEETS.
 - 4. FOR DRIVEWAY PAVEMENT MATERIAL AND THICKNESS SEE SCHEDULE OF DRIVEWAY QUANTITIES.
 - 5. REFER TO DISTRICT ONE STANDARD DETAIL FOR DRIVEWAY DESIGN.
 - 6. ALL RADII ARE TO EDGE OF PAVEMENT UNLESS OTHERWISE NOTED.
 - 7. FOR MAILBOX TURNOUTS SEE CONSTRUCTION DETAIL SHEET.



ILLINOIS DEPARTMENT OF TRANSPORTATION

SOIL PROFILE
US ROUTE 30
SHEET 16 OF 22

SCALE: VERT.: 1"=5'
HORIZ.: 1"=20'
DATE: 03/29/02

DRAWN BY: SNG
CHECKED BY: AMB/KDF

REVISIONS	NAME	DATE

CMT
CRAWFORD MURPHY & TILLY, INC.
CONSULTING ENGINEERS
SPRINGFIELD, IL ■ AURORA, IL ■ ST. LOUIS, MO

I:\dot\0006602\draw\bid\sheet\pp06.dgn