

CODE NO.	ITEM	UNIT	URBAN TOTAL QUANTITY	CONSTR. CODE	
				80% FEDERAL 20% STATE BRIDGE 0047 S.N. 016-2533	
* 66900200	NON-SPECIAL WASTE DISPOSAL	CU YD	20	20	
* 66900530	SOIL DISPOSAL ANALYSIS	EACH	2	2	
* 66901001	REGULATED SUBSTANCES PRE-CONSTRUCTION PLAN	L SUM	1	1	
* 66901003	REGULATED SUBSTANCES FINAL CONSTRUCTION REPORT	L SUM	1	1	
* 66901006	REGULATED SUBSTANCES MONITORING	CAL DA	2	2	
67100100	MOBILIZATION	L SUM	1	1	
70107025	CHANGEABLE MESSAGE SIGN	CAL DA	90	90	
70300100	SHORT TERM PAVEMENT MARKING	FOOT	384	384	
70300150	SHORT TERM PAVEMENT MARKING REMOVAL	SQ FT	1701	1701	
70300251	TEMPORARY PAVEMENT MARKING - LINE 8" - PAINT	FOOT	350	350	
70300241	TEMPORARY PAVEMENT MARKING - LINE 6" - PAINT	FOOT	350	350	
70307100	TEMPORARY PAVEMENT MARKING LETTERS AND SYMBOLS - TYPE IV TAPE	SQ FT	104	104	
70307120	TEMPORARY PAVEMENT MARKING - LINE 4" - TYPE IV TAPE	FOOT	2515	2515	
70307130	TEMPORARY PAVEMENT MARKING - LINE 6" - TYPE IV TAPE	FOOT	653	653	
70307160	TEMPORARY PAVEMENT MARKING - LINE 12" - TYPE IV TAPE	FOOT	114	114	
70307210	TEMPORARY PAVEMENT MARKING - LINE 24" - TYPE IV TAPE	FOOT	95	95	

* SPECIALTY ITEMS



MODEL: Default
FILE NAME: C:\SPR\WHKS & CO\Jobs-Spring - Projects\DOT D-18793.21 IL 72 Deck Overlay (WQ-42)\CAD\DOT Sheets\DOT18793-sh-500.dgn

design firm
no. 184001036
whks
engineers + planners + land surveyors

USER NAME = gjameson	DESIGNED - BJJ	REVISED -
PLOT SCALE = 1200.0.0000 '"/ft.	DRAWN - GSJ	REVISED -
PLOT DATE = 4/27/2023	CHECKED - CWC	REVISED -
	DATE - 4/27/2023	REVISED -

**STATE OF ILLINOIS
DEPARTMENT OF TRANSPORTATION**

**SUMMARY OF QUANTITIES
IL 72 (HIGGINS ROAD) OVER WILLOW CREEK**

SCALE: 1" = 50' SHEET 3 OF 7 SHEETS STA. TO STA.

F.A.U. RTE.	SECTION	COUNTY	TOTAL SHEETS	SHEET NO.
1350	FAU 1350 22 BJ	COOK	56	5
ILLINOIS FED. AID PROJECT			CONTRACT NO. 62T39	

REVISOR: [Symbol] REVISED SHEET 7/19/2023

CODE NO.	ITEM	UNIT	URBAN TOTAL QUANTITY	CONSTR. CODE
				80% FEDERAL 20% STATE BRIDGE 0047 S.N. 016-2533
70400100	TEMPORARY CONCRETE BARRIER	FOOT	175	175
70400200	RELOCATE TEMPORARY CONCRETE BARRIER	FOOT	175	175
70600255	IMPACT ATTENUATORS, TEMPORARY (FULLY REDIRECTIVE, NARROW), TEST LEVEL 2	EACH	2	2
70600322	IMPACT ATTENUATORS, RELOCATE (FULLY REDIRECTIVE, NARROW), TEST LEVEL 2	EACH	2	2
* 72501000	TERMINAL MARKER - DIRECT APPLIED	EACH	2	2
* 78000100	THERMOPLASTIC PAVEMENT MARKING - LETTERS AND SYMBOLS	SQ FT	104	104
* 78000200	THERMOPLASTIC PAVEMENT MARKING - LINE 4"	FOOT	2875	2875
* 78000400	THERMOPLASTIC PAVEMENT MARKING - LINE 6"	FOOT	653	653
* 78000600	THERMOPLASTIC PAVEMENT MARKING - LINE 12"	FOOT	114	114
* 78000650	THERMOPLASTIC PAVEMENT MARKING - LINE 24"	FOOT	95	95
* 78004635	PREFORMED PLASTIC PAVEMENT MARKING, TYPE D - STANDARD - LINE 7"	FOOT	20	20
* 78004620	PREFORMED PLASTIC PAVEMENT MARKING, TYPE D - STANDARD - LINE 4"	FOOT	97	97
* 78009004	MODIFIED URETHANE PAVEMENT MARKING - LINE 4"	FOOT	97	97
* 78011025	GROOVING FOR RECESSED PAVEMENT MARKING 5"	FOOT	97	97
* 78011040	GROOVING FOR RECESSED PAVEMENT MARKING 8"	FOOT	20	20
* 78100100	RAISED REFLECTIVE PAVEMENT MARKER	EACH	82	82
* 78100300	REPLACEMENT REFLECTOR	EACH	78	78
* 78100300	REPLACEMENT REFLECTOR	EACH	78	78
* SPECIALTY ITEMS				



MODEL: Default
 FILE NAME: C:\SWHKS & CO\Jobs\Spring - Projects\DOT D-118793.21 IL 72 Deck Overlay (WQ-42)\CAD\CAD_Sheets\162739-sh-500.dgn

design firm
 no. 184001036


 engineers + planners + land surveyors

USER NAME = gjameson	DESIGNED - BJJ	REVISED -
PLOT SCALE = 1200.0:0000 '"/ft.	DRAWN - GSJ	REVISED -
PLOT DATE = 4/27/2023	CHECKED - CWC	REVISED -
	DATE - 4/27/2023	REVISED -

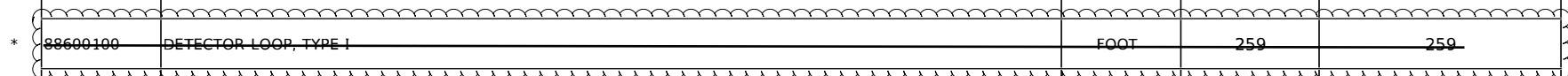
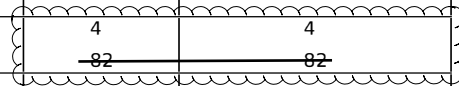
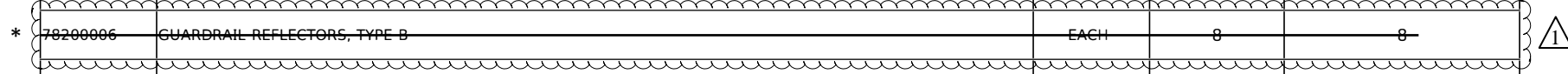
STATE OF ILLINOIS
DEPARTMENT OF TRANSPORTATION

SUMMARY OF QUANTITIES			
IL 72 (HIGGINS ROAD) OVER WILLOW CREEK			
SCALE: 1" = 50'	SHEET 4	OF 7 SHEETS	STA. TO STA.

FAU RTE. 1350	SECTION FAU 1350 22 BJ	COUNTY COOK	TOTAL SHEETS 56	SHEET NO. 6
CONTRACT NO. 62T39				
ILLINOIS FED. AID PROJECT				


 REVISED SHEET 7/19/2023

CODE NO.	ITEM	UNIT	URBAN TOTAL QUANTITY	CONSTR. CODE	
				80% FEDERAL	
				20% STATE	
				BRIDGE	
0047					
S.N. 016-2533					
* 78200006	GUARDRAIL REFLECTORS, TYPE B	EACH	8	8	
* 78200011	BARRIER WALL REFLECTORS, TYPE C	EACH	14	14	
78300200	RAISED REFLECTIVE PAVEMENT MARKER REMOVAL	EACH	4	4	
			82	82	
78300202	PAVEMENT MARKING REMOVAL - WATER BLASTING	SQ FT	1589	1589	
* 81028200	UNDERGROUND CONDUIT, GALVANIZED STEEL, 2" DIA.	FOOT	93	93	
* 85000200	MAINTENANCE OF EXISTING TRAFFIC SIGNAL INSTALLATION	EACH	3	3	
* 87301215	ELECTRIC CABLE IN CONDUIT, SIGNAL NO. 14 2C	FOOT	686	686	
* 87301225	ELECTRIC CABLE IN CONDUIT, SIGNAL NO. 14 3C	FOOT	716	716	
* 87900200	DRILL EXISTING HANDHOLE	EACH	6	6	
* 88102717	PEDESTRIAN SIGNAL HEAD, LED, 1-FACE, BRACKET MOUNTED WITH COUNTDOWN TIMER	EACH	6	6	
* 88600100	DETECTOR LOOP, TYPE 1	FOOT	259	259	
* 88600600	DETECTOR LOOP REPLACEMENT	FOOT	117	117	
* 89000100	TEMPORARY TRAFFIC SIGNAL INSTALLATION	EACH	1	1	
* 89000100	TEMPORARY TRAFFIC SIGNAL INSTALLATION	EACH	1	1	



* SPECIALTY ITEMS

MODEL: Default
 FILE NAME: C:\SPR\WHKS & CO\Jobs\Spring - Projects\DOT D-18793.21 IL 72 Deck Overlay (WQ-42)\CAD\DWG\CAD_Sheets\18793-shf-500.dgn



USER NAME = gjameson	DESIGNED - BJJ	REVISED -
PLOT SCALE = 1200.0:0.0000 '"/ft.	DRAWN - GSJ	REVISED -
PLOT DATE = 4/27/2023	CHECKED - CWC	REVISED -
	DATE - 4/27/2023	REVISED -

STATE OF ILLINOIS
 DEPARTMENT OF TRANSPORTATION

SUMMARY OF QUANTITIES			
IL 72 (HIGGINS ROAD) OVER WILLOW CREEK			
SCALE: 1" = 50'	SHEET 5	OF 7 SHEETS	STA. TO STA.

F.A.U. RTE. 1350	SECTION FAU 1350 22 BJ	COUNTY COOK	TOTAL SHEETS 56	SHEET NO. 7
CONTRACT NO. 62T39				
ILLINOIS FED. AID PROJECT				

1 REVISED SHEET 7/19/2023

CODE NO.	ITEM	UNIT	URBAN TOTAL QUANTITY	CONSTR. CODE
				80% FEDERAL 20% STATE BRIDGE 0047 S.N. 016-2533
* 89502300	REMOVE ELECTRIC CABLE FROM CONDUIT	FOOT	1300	1300
* 89502375	REMOVE EXISTING TRAFFIC SIGNAL EQUIPMENT	EACH	1	1
X0320050	CONSTRUCTION LAYOUT (SPECIAL)	L SUM	1	1
* X1400367	PEDESTRIAN SIGNAL POST, 10 FT.	EACH	6	6
<input type="checkbox"/> X5537800	STORM SEWERS TO BE CLEANED 12"	FOOT	50	50
X5870015	BRIDGE DECK CONCRETE SEALER	SQ FT	2826	2826
* X6330725	STEEL PLATE BEAM GUARDRAIL (SHORT RADIUS)	FOOT	13	13
* X6330900	VERTICAL ADJUSTMENT OF GUARDRAIL	FOOT	38	38
X6700407	ENGINEER'S FIELD OFFICE, TYPE A (D1)	CAL MO	6	6
* X7010216	TRAFFIC CONTROL AND PROTECTION, (SPECIAL)	L SUM	1	1
* X7010216	TRAFFIC CONTROL AND PROTECTION, (SPECIAL)	L SUM	1	1
X7830050	RAISED REFLECTIVE PAVEMENT MARKER, REFLECTOR REMOVAL	EACH	78	78
* X8780012	CONCRETE FOUNDATION, TYPE A 12-INCH DIAMETER	FOOT	24	24
Z0001800	APPROACH SLAB REPAIR (PARTIAL DEPTH)	SQ YD	31	31
Z0004552	APPROACH SLAB REMOVAL	SQ YD	5	5

* SPECIALTY ITEMS



REVISED SHEET 7/19/2023

NON-PART 100% STATE

MODEL: Default; FILE NAME: C:\SPR\WHKS & CO\Jobs\Spring - Projects\DOT D-18793.21 IL 72 Deck Overlay W0-42\CADD\CAD Sheets\18793-sh-500.dgn

design firm
no. 184001036
whks
engineers + planners + land surveyors

USER NAME = gjamason	DESIGNED - BJJ	REVISED -
PLOT SCALE = 1200.0.0000 '"/ft.	DRAWN - GSJ	REVISED -
PLOT DATE = 4/27/2023	CHECKED - CWC	REVISED -
	DATE - 4/27/2023	REVISED -

**STATE OF ILLINOIS
DEPARTMENT OF TRANSPORTATION**

**SUMMARY OF QUANTITIES
IL 72 (HIGGINS ROAD) OVER WILLOW CREEK**

SCALE: 1" = 50' SHEET 6 OF 7 SHEETS STA. TO STA.

F.A.U. RTE.	SECTION	COUNTY	TOTAL SHEETS	SHEET NO.
1350	FAU 1350 22 BJ	COOK	56	8
			CONTRACT NO. 62T39	
ILLINOIS FED. AID PROJECT				

TRAFFIC CONTROL GENERAL NOTES

1. THE CONTRACTOR SHALL NOT MOUNT SIGNS ON EXISTING SIGNS.
2. CONTRACTOR SHALL MAINTAIN SATISFACTORY INGRESS AND EGRESS TO ADJACENT PROPERTIES THROUGHOUT THE CONSTRUCTION.
3. ALL TEMPORARY PAVEMENT MARKINGS SHALL BE PAVEMENT MARKING TAPE, TYPE IV OR AS OTHERWISE NOTED.
4. REMOVAL OF TEMPORARY PAVEMENT MARKINGS SHALL BE PAID FOR AS SHORT TERM PAVEMENT MARKING REMOVAL.
5. EXISTING, CONFLICTING PAVEMENT MARKINGS SHALL BE REMOVED. THIS WORK SHALL BE PAID FOR AS PAVEMENT MARKING REMOVAL - WATER BLASTING.
6. THE EXISTING PAVEMENT MARKINGS THAT HAVE BEEN REMOVED SHALL BE REPLACED. SEE PAVEMENT MARKING PLAN FOR TYPE.
7. A MONO-DIRECTIONAL FLASHING AMBER BEACON SHALL BE MOUNTED ON THE FIRST THREE WARNING SIGNS ON EACH APPROACH.
8. TEMPORARY CONCRETE BARRIER SHALL BE PLACED AS SHOWN ON THE SUGGESTED TRAFFIC CONTROL AND PROTECTION PLAN AND IN CONJUNCTION WITH STANDARD 704001.
9. CHANGEABLE MESSAGE SIGNS SHALL BE INSTALLED TWO WEEKS PRIOR TO ALL TRAFFIC STAGE CHANGES ON EACH APPROACH OF THE EFFECTED ROADWAY TO WARN MOTOTISTS OF THE UPCOMING EVENT. THE SIGN MESSAGES SHALL BE REVISED TWO WEEKS THEREAFTER WITH MESSAGES WARNING TRAFFIC OF POTENTIAL TRAFFIC DELAYS, QUEING AND/OR WITH MESSAGES NOTIFYING TRAFFIC TO USE ALTERNATE ROUTES. THE SIGN LOCATIONS AND MESSAGES SHALL BE DETERMINED BY THE ENGINEER.

SUGGESTED STAGING AND MAINTENANCE OF TRAFFIC

CONSTRUCTION STAGING

STAGE I

WESTBOUND HALF OF BRIDGE: SCARIFY; REPAIR DECK AND APPROACH SLABS; PLACE LATEX CONCRETE OVERLAY. NORTH HALF OF ROADWAY: REMOVE AND REPLACE SIDEWALK AND COMBINATION CONCRETE CURB AND GUTTER.

STAGE II

EASTBOUND HALF OF BRIDGE: SCARIFY; REPAIR DECK, APPROACH SLABS AND BRIDGE JOINTS; PLACE LATEX CONCRETE OVERLAY. SOUTH HALF OF ROADWAY: REMOVE AND REPLACE SIDEWALK AND COMBINATION CONCRETE CURB AND GUTTER.

OVERLAY APPROACH SLABS AND EXISTING PAVEMENT AT THE END OF STAGE II.

MAINTENANCE OF TRAFFIC

STAGE I

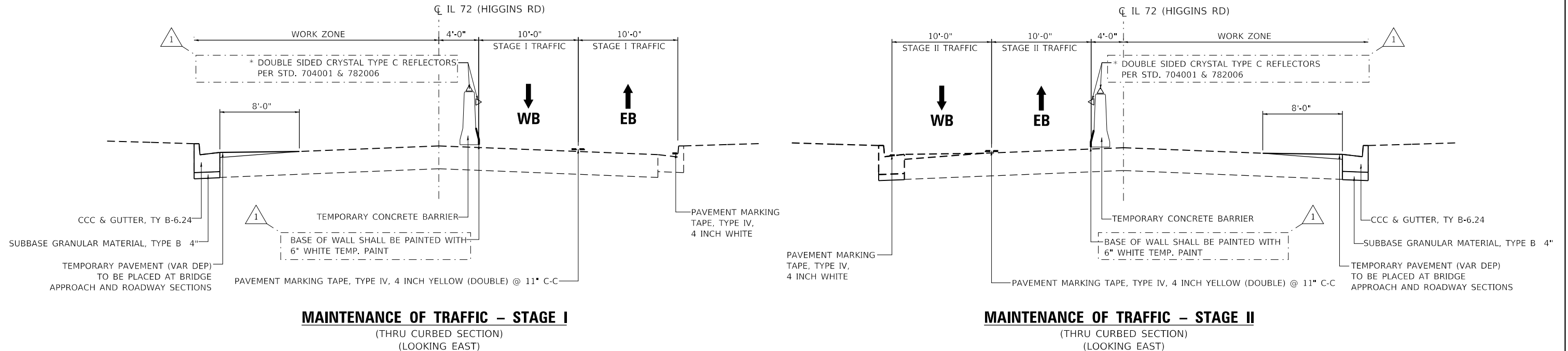
UTILIZE SUGGESTED TRAFFIC CONTROL & PROTECTION - STAGE I PLANS. MAINTAIN TWO-LANE TWO-WAY TRAFFIC ON EASTBOUND PAVEMENT ACROSS BRIDGE. MAINTAIN SIGNALIZED INTERSECTION. REMOVE CONFLICTING EXISTING PAVEMENT MARKINGS. CLOSE SIDEWALK ON NORTH UTILIZING IDOT HIGHWAY STANDARD 701801.

STAGE II

UTILIZE SUGGESTED TRAFFIC CONTROL & PROTECTION - STAGE II PLANS. MAINTAIN TWO-LANE TWO-WAY TRAFFIC ON WESTBOUND PAVEMENT ACROSS BRIDGE. MAINTAIN SIGNALIZED INTERSECTION. REMOVE CONFLICTING EXISTING PAVEMENT MARKINGS. CLOSE SIDEWALK ON SOUTH UTILIZING IDOT HIGHWAY STANDARD 701801.

USE LANE CLOSURES TO OVERLAY APPROACH SLABS AND PAVEMENT AT THE END OF STAGE II UTILIZING IDOT HIGHWAY STANDARD 701606 OR 701701.

* TYPE C REFLECTORS SHALL BE CONSIDERED INCLUDED IN THE COST OF TEMPORARY CONCRETE BARRIER.



1 REVISED SHEET 7/19/2023

MODEL: Default
FILE NAME: C:\SPR\WHS & CO\Jobs-Spring - Projects\IDOT 13-18793.21 IL 72 Deck Overlay (W0-42)\CAD\CAD_Sheets\1318793-21-IL-72-Deck-Overlay\1318793-21-IL-72-Deck-Overlay.dgn

design firm
no. 184001036
whks
engineers + planners + land surveyors

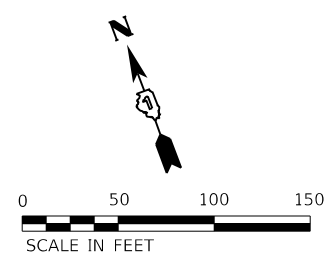
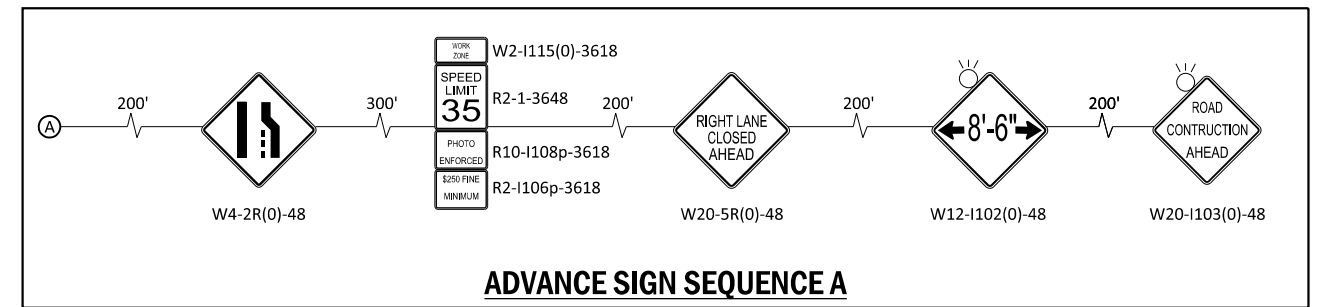
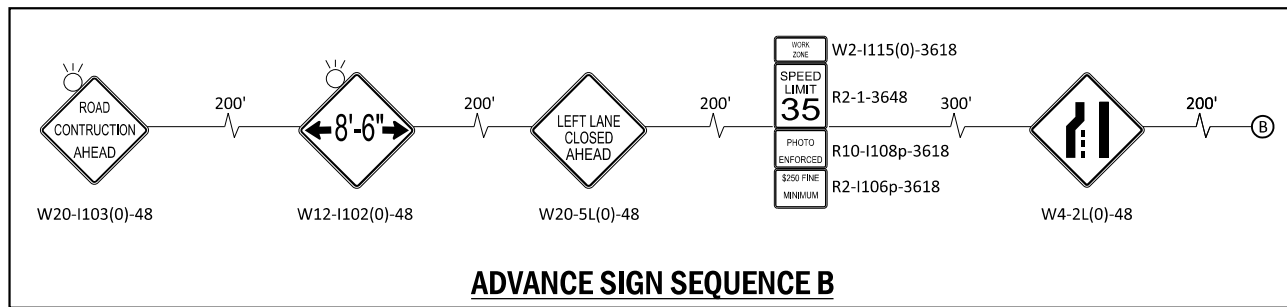
USER NAME = gjameson	DESIGNED - BJJ	REVISED - 07-18-23 RKA
PLOT SCALE = 1/200,0000' / ft.	DRAWN - GSJ	REVISED -
PLOT DATE = 7/18/2023	CHECKED - CWC	REVISED -
	DATE - 7/18/2023	REVISED -

STATE OF ILLINOIS
DEPARTMENT OF TRANSPORTATION

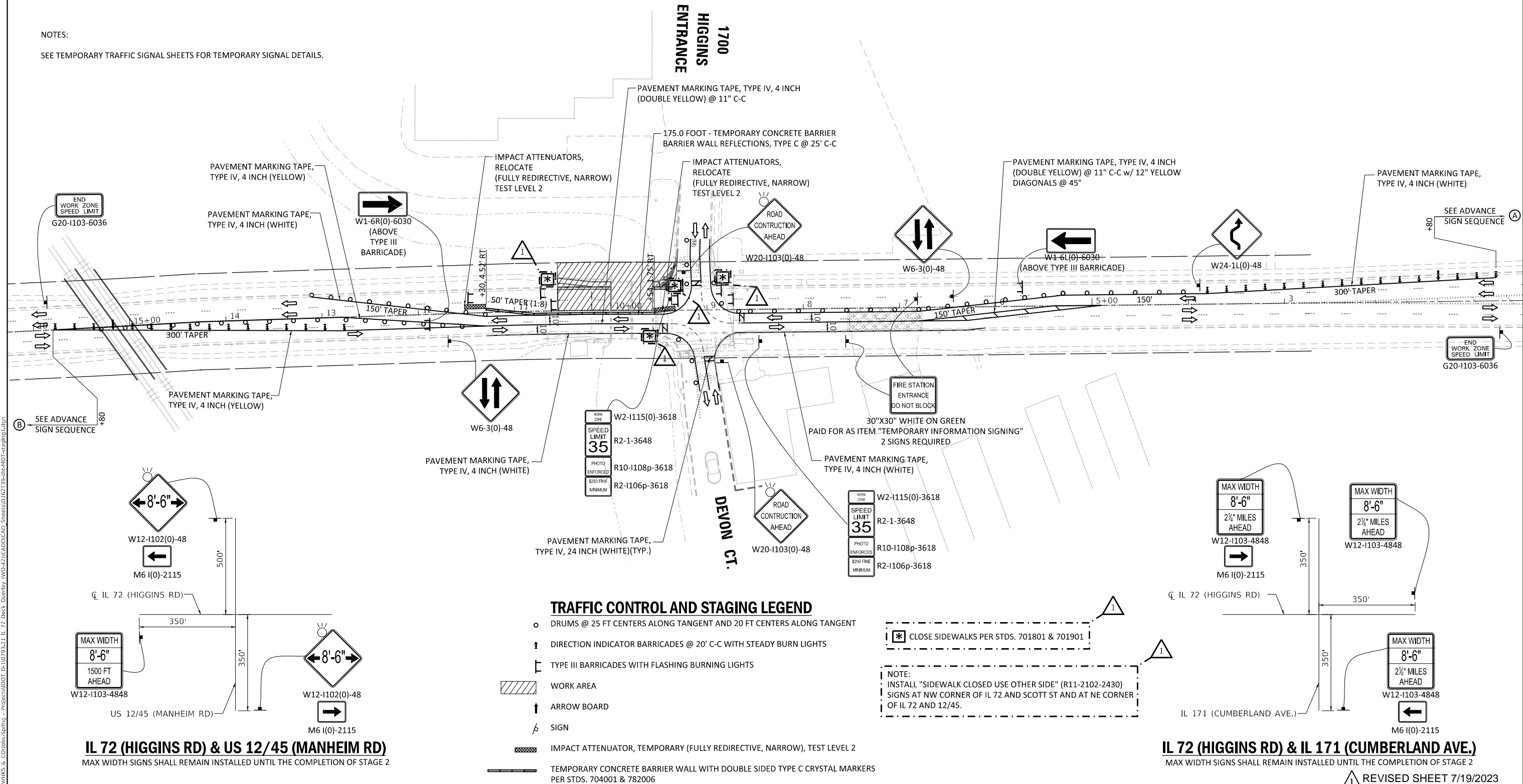
MAINTENANCE OF TRAFFIC NOTES & SEQUENCE OF CONSTRUCTION
IL 72 (HIGGINS ROAD) OVER WILLOW CREEK

SCALE: 1" = 50' SHEET 1 OF 1 SHEETS STA. TO STA.

F.A.U. RTE.	SECTION	COUNTY	TOTAL SHEETS	SHEET NO.
1350	FAU 1350 22 BJ	COOK	56	15
CONTRACT NO. 62T39				
ILLINOIS FED. AID PROJECT				



NOTES:
SEE TEMPORARY TRAFFIC SIGNAL SHEETS FOR TEMPORARY SIGNAL DETAILS.



TRAFFIC CONTROL AND STAGING LEGEND

- DRUMS @ 25 FT CENTERS ALONG TANGENT AND 20 FT CENTERS ALONG TANGENT
 - ⚡ DIRECTION INDICATOR BARRICADES @ 20' C-C WITH STEADY BURN LIGHTS
 - ⌈ TYPE III BARRICADES WITH FLASHING BURNING LIGHTS
 - ▨ WORK AREA
 - ↑ ARROW BOARD
 - ♣ SIGN
 - ▩ IMPACT ATTENUATOR, TEMPORARY (FULLY REDIRECTIVE, NARROW), TEST LEVEL 2
 - ▬ TEMPORARY CONCRETE BARRIER WALL WITH DOUBLE SIDED TYPE C CRYSTAL MARKERS PER STDS. 704001 & 782006
- NOTE:
INSTALL "SIDEWALK CLOSED USE OTHER SIDE" (R11-2102-2430) SIGNS AT NW CORNER OF IL 72 AND SCOTT ST AND AT NE CORNER OF IL 72 AND 12/45.

IL 72 (HIGGINS RD) & US 12/45 (MANHEIM RD)
MAX WIDTH SIGNS SHALL REMAIN INSTALLED UNTIL THE COMPLETION OF STAGE 2

IL 72 (HIGGINS RD) & IL 171 (CUMBERLAND AVE.)
MAX WIDTH SIGNS SHALL REMAIN INSTALLED UNTIL THE COMPLETION OF STAGE 2

REVISED SHEET 7/19/2023



USER NAME = gjameson	DESIGNED - BJJ	REVISION 07-18-23 RKA
PLOT SCALE = 1/200,000" = 1' / ft.	DRAWN - GSJ	REVISION
PLOT DATE = 7/18/2023	CHECKED - CWC	REVISION
	DATE - 7/18/2023	REVISION

STATE OF ILLINOIS
DEPARTMENT OF TRANSPORTATION

SUGGESTED TRAFFIC CONTROL AND PROTECTION - STAGE I
IL 72 (HIGGINS ROAD) OVER WILLOW CREEK

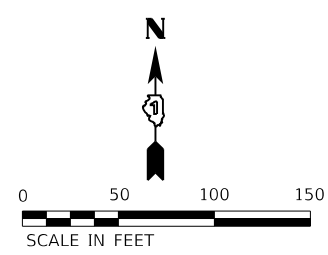
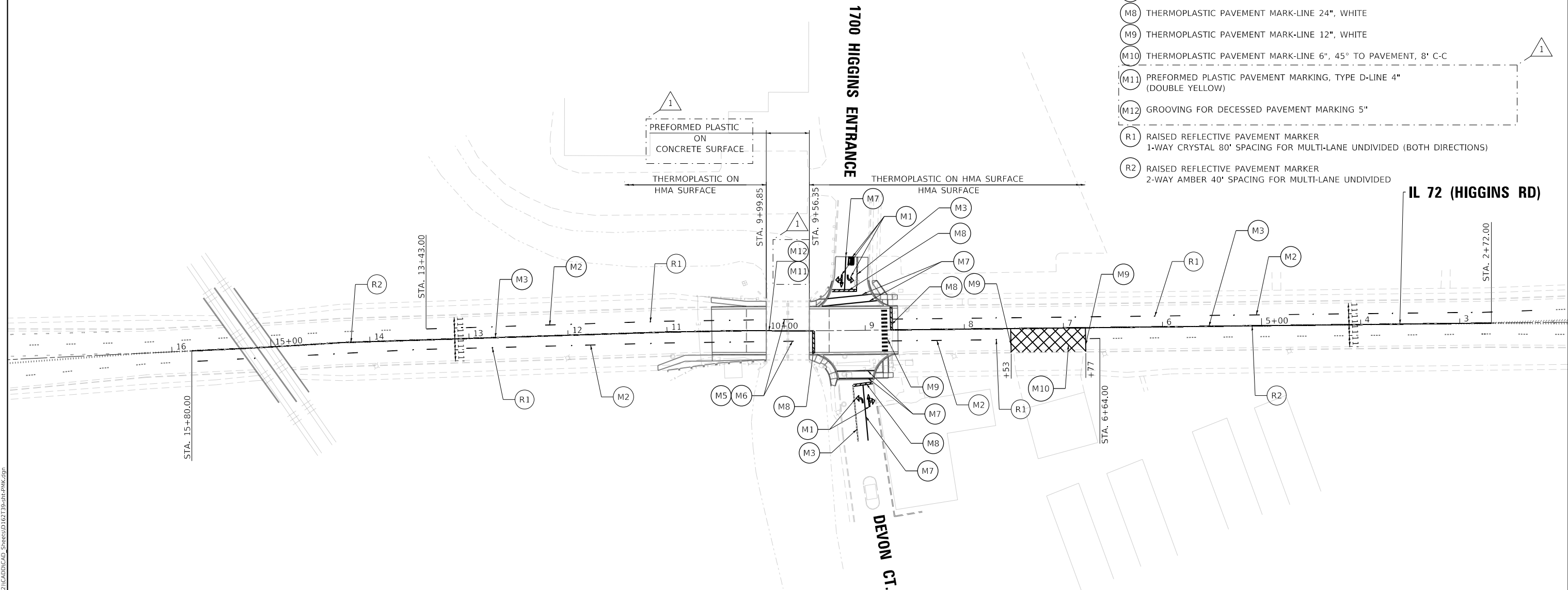
F.A.U. RTE.	SECTION	COUNTY	TOTAL SHEETS	SHEET NO.
1350	FAU 1350 22 BJ	COOK	56	16
CONTRACT NO. 62T39				
ILLINOIS		FED. AID PROJECT		

MODEL: Default; design firm no. 184001036; FILE NAME: C:\SPR\WHS & CO\obsc-Sprng - Project\DOT D-18793.21 IL 72 Deck Overlay (W0-42)\CAD\CADD_Sheets\102739-sh-401-rtatgno1.dwg

NOTE:
RAISED REFLECTIVE PAVEMENT MARKERS SHALL
BE REMOVED AND NOT REPLACED WITHIN BRIDGE LIMITS.

LEGEND

- (M1) THERMOPLASTIC PAVEMENT MARKING - LETTERS AND SYMBOLS
- (M2) THERMOPLASTIC PAVEMENT MARK-LINE 4", WHITE (10' DASH-30' SKIP)
- (M3) THERMOPLASTIC PAVEMENT MARK-LINE 4", YELLOW (DOUBLE SOLID 11" C-C)
- (M4) MODIFIED URETHANE PAVEMENT MARK-LINE 4", YELLOW (DOUBLE SOLID 11" C-C)
- (M5) PREFORMED PLASTIC PAVEMENT MARK, TYPE D|7" WHITE (10' DASH-30' SKIP)
- (M6) GROOVING FOR RECESSED PAVEMENT MARK 8"
- (M7) THERMOPLASTIC PAVEMENT MARK-LINE 6", WHITE
- (M8) THERMOPLASTIC PAVEMENT MARK-LINE 24", WHITE
- (M9) THERMOPLASTIC PAVEMENT MARK-LINE 12", WHITE
- (M10) THERMOPLASTIC PAVEMENT MARK-LINE 6", 45° TO PAVEMENT, 8" C-C
- (M11) PREFORMED PLASTIC PAVEMENT MARKING, TYPE D-LINE 4" (DOUBLE YELLOW)
- (M12) GROOVING FOR DECESSED PAVEMENT MARKING 5"
- (R1) RAISED REFLECTIVE PAVEMENT MARKER
1-WAY CRYSTAL 80' SPACING FOR MULTI-LANE UNDIVIDED (BOTH DIRECTIONS)
- (R2) RAISED REFLECTIVE PAVEMENT MARKER
2-WAY AMBER 40' SPACING FOR MULTI-LANE UNDIVIDED



MODEL: Default
 FILE NAME: C:\SPR\WHKS & CO\Jobs-Spring - Projects\BIDD\15-18793.21 IL 72 Deck Overlay\150-42\CADD\CADD_Sheets\152T39-shl-PMK.dgn

 design firm no. 184001036 engineers + planners + land surveyors	USER NAME = gjameson	DESIGNED - BJJ	REVISED - 07-18-23 RKA
	PLOT SCALE = 1/200,000" = 1/4" = 1" / ft.	DRAWN - GSJ	REVISED -
	PLOT DATE = 7/18/2023	CHECKED - CWC	REVISED -
		DATE - 7/18/2023	REVISED -

**STATE OF ILLINOIS
DEPARTMENT OF TRANSPORTATION**

**PAVEMENT MARKING PLAN
IL 72 (HIGGINS ROAD) OVER WILLOW CREEK**

F.A.U. RTE.	SECTION	COUNTY	TOTAL SHEETS	SHEET NO.
1350	FAU 1350 22 BJ	COOK	56	19
CONTRACT NO. 62T39				
ILLINOIS FED. AID PROJECT				

REVISED SHEET 7/19/2023

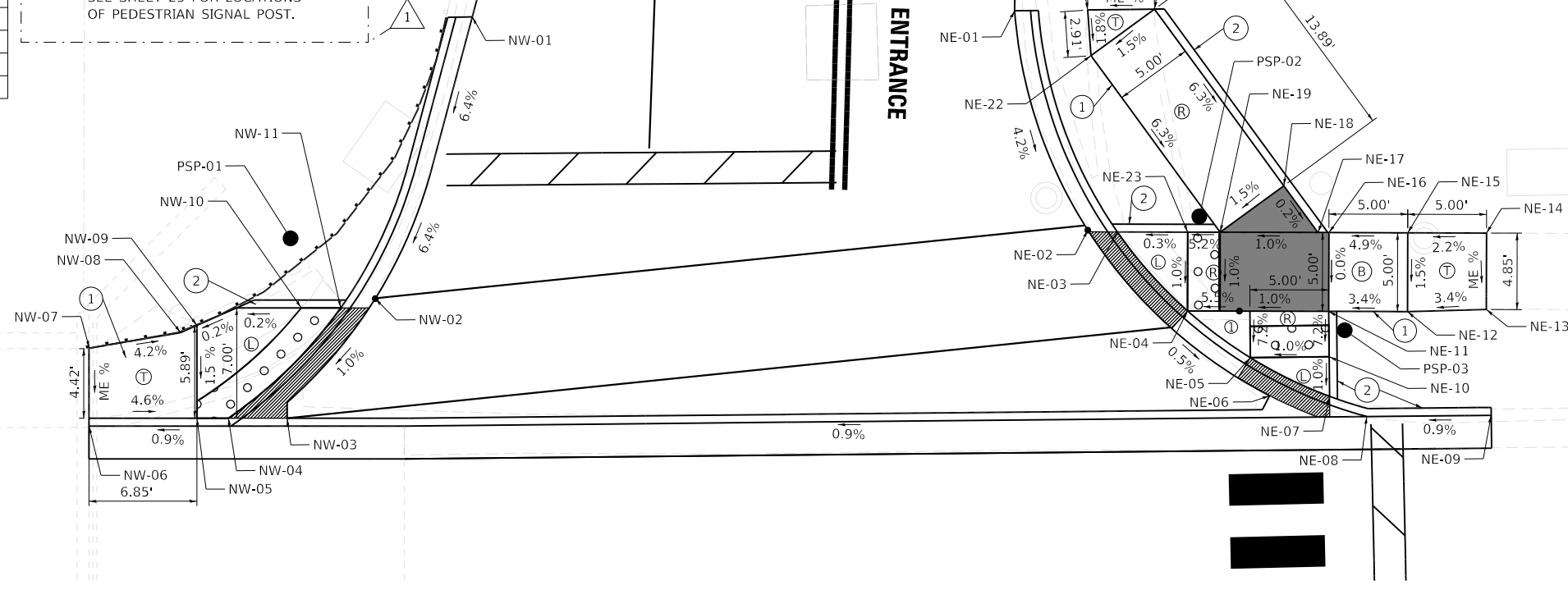
SCALE: 1" = 50' SHEET 1 OF 1 SHEETS STA. TO STA.

NORTHWEST QUADRANT			
POINT	STATION	OFFSET	ELEVATION
NW-01	9+31.46	50.00	637.11
NW-02	9+38.19	32.17	635.91
NW-03	9+43.78	24.58	635.80
NW-04	9+47.51	24.58	635.77
NW-05	9+49.50	24.58	635.77
NW-06	9+56.35	24.08	635.58
NW-07	9+56.33	29.03	636.24
NW-08	9+50.54	30.01	635.90
NW-09	9+49.51	30.47	635.85
NW-10	9+42.88	31.58	635.86
NW-11	9+40.38	31.58	635.87

PEDESTRIAN SIGNAL POST		
POINT	STATION	OFFSET
PSP-01	9+43.56	36.00
PSP-02	8+85.50	36.80
PSP-03	8+76.32	29.48
PSP-04	8+76.32	-39.48
PSP-05	8+82.30	-49.03
PSP-06	3+36.43	-51.00

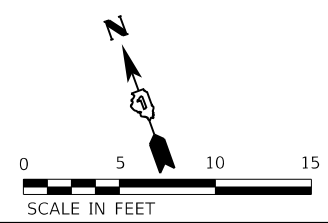
SEE SHEET 25 FOR LOCATIONS OF PEDESTRIAN SIGNAL POST.

NORTHEAST QUADRANT			
POINT	STATION	OFFSET	ELEVATION
NE-01	8+97.03	50.00	637.08
NE-02	8+92.55	36.02	636.46
NE-03	8+90.67	35.88	636.43
NE-04	8+86.28	30.82	636.40
NE-05	8+82.32	27.80	636.37
NE-06	8+81.13	25.38	636.38
NE-07	8+77.32	25.29	636.40
NE-08	8+74.98	23.98	636.28
NE-09	8+67.09	23.97	636.35
NE-10	8+77.33	27.80	636.42
NE-11	8+77.32	30.69	636.63
NE-12	8+72.33	30.62	636.79
NE-13	8+67.32	30.69	636.96
NE-14	8+67.25	35.55	636.98
NE-15	8+72.25	35.62	636.87
NE-16	8+77.25	35.69	636.63
NE-17	8+77.94	35.70	636.62
NE-18	8+80.08	38.70	636.63
NE-19	8+84.15	35.79	636.55
NE-20	8+88.15	50.00	637.50
NE-21	8+92.39	50.00	637.48
NE-22	8+92.22	47.09	637.43
NE-23	8+86.21	35.82	636.45

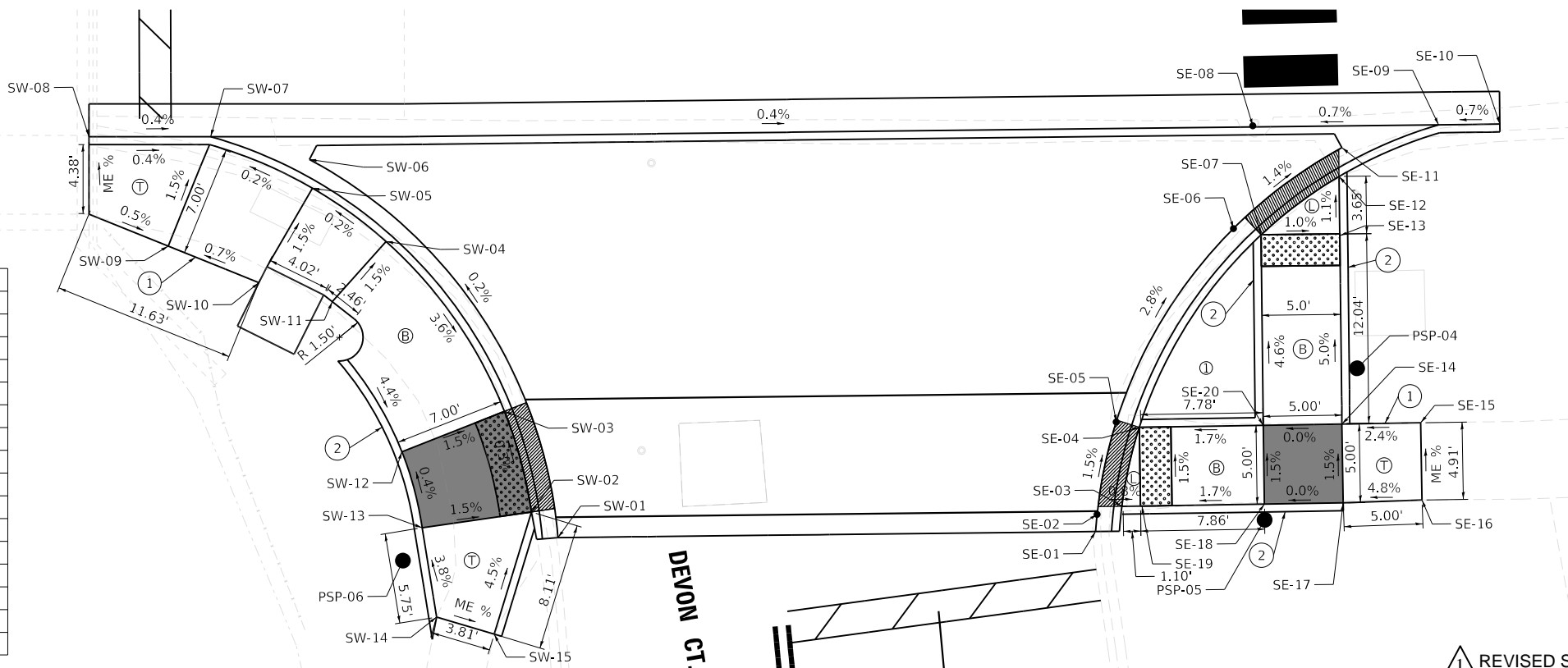


LEGEND

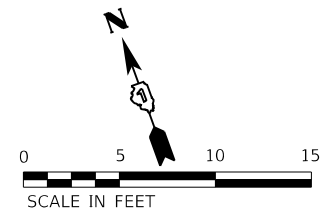
- ① PCC SIDEWALK 5 INCH
- ② TYPE B CURB
- Ⓛ LANDING
- Ⓡ RAMP
- Ⓟ BLENDED TRANSITION
- Ⓣ TRANSITION PANEL
- ▨ DETECTABLE WARNING
- ▩ DEPRESSED CURB AND GUTTER
- TURNING SPACE
- % PROPOSED FINISHED SLOPE
- ME % MATCH EXISTING SLOPE
- PEDESTRIAN SIGNAL POST



SOUTHWEST QUADRANT			
POINT	STATION	OFFSET	ELEVATION
SW-01	9+27.15	-49.65	635.71
SW-02	9+28.83	-48.00	635.69
SW-03	9+30.46	-41.59	635.67
SW-04	9+37.50	-30.75	636.11
SW-05	9+42.17	-27.36	636.10
SW-06	9+42.37	-25.53	635.66
SW-07	9+48.63	-24.08	636.05
SW-08	9+56.35	-24.08	636.58
SW-09	9+51.32	-31.03	636.16
SW-10	9+45.57	-33.36	636.20
SW-11	9+40.91	-34.56	636.19
SW-12	9+36.49	-44.09	635.78
SW-13	9+35.77	-48.92	635.79
SW-14	9+34.92	-54.61	636.00
SW-15	9+31.28	-55.73	636.05



SOUTHEAST QUADRANT			
POINT	STATION	OFFSET	ELEVATION
SE-01	8+93.03	-49.65	636.18
SE-02	8+92.93	-48.56	636.14
SE-03	8+91.35	-48.07	636.11
SE-04	8+90.19	-43.07	636.03
SE-05	8+91.65	-42.71	636.05
SE-06	8+84.07	-30.52	635.64
SE-07	8+82.32	-30.94	635.61
SE-08	8+82.76	-24.01	635.31
SE-09	8+70.98	-24.08	635.39
SE-10	8+67.09	-24.08	635.41
SE-11	8+77.13	-25.47	635.53
SE-12	8+77.32	-27.29	635.52
SE-13	8+77.33	-31.05	635.56
SE-14	8+77.32	-43.01	636.16
SE-15	8+72.33	-42.98	636.28
SE-16	8+72.30	-47.89	636.47
SE-17	8+77.30	-48.01	636.24
SE-18	8+82.30	-48.03	636.24
SE-19	8+90.08	-48.07	636.10
SE-20	8+82.33	-43.03	636.16



REVISION 1 7/19/2023

MODEL: Default; FILE NAME: C:\SPR\WILKS & CO\ibc-spring - Project\DOT D-18793.21 IL 72 Deck Overlay\W0-42\CADD\CAD_Sheets\18793-21-SW-Curb.dwg

design firm
no. 184001036
whks
engineers + planners + land surveyors

USER NAME = gjameson	DESIGNED - BJJ	REVISED - 07-18-23 RKA
PLOT SCALE = 120,0000' / ft.	DRAWN - GSJ	REVISED -
PLOT DATE = 7/18/2023	CHECKED - CWC	REVISED -
	DATE - 7/18/2023	REVISED -

**STATE OF ILLINOIS
DEPARTMENT OF TRANSPORTATION**

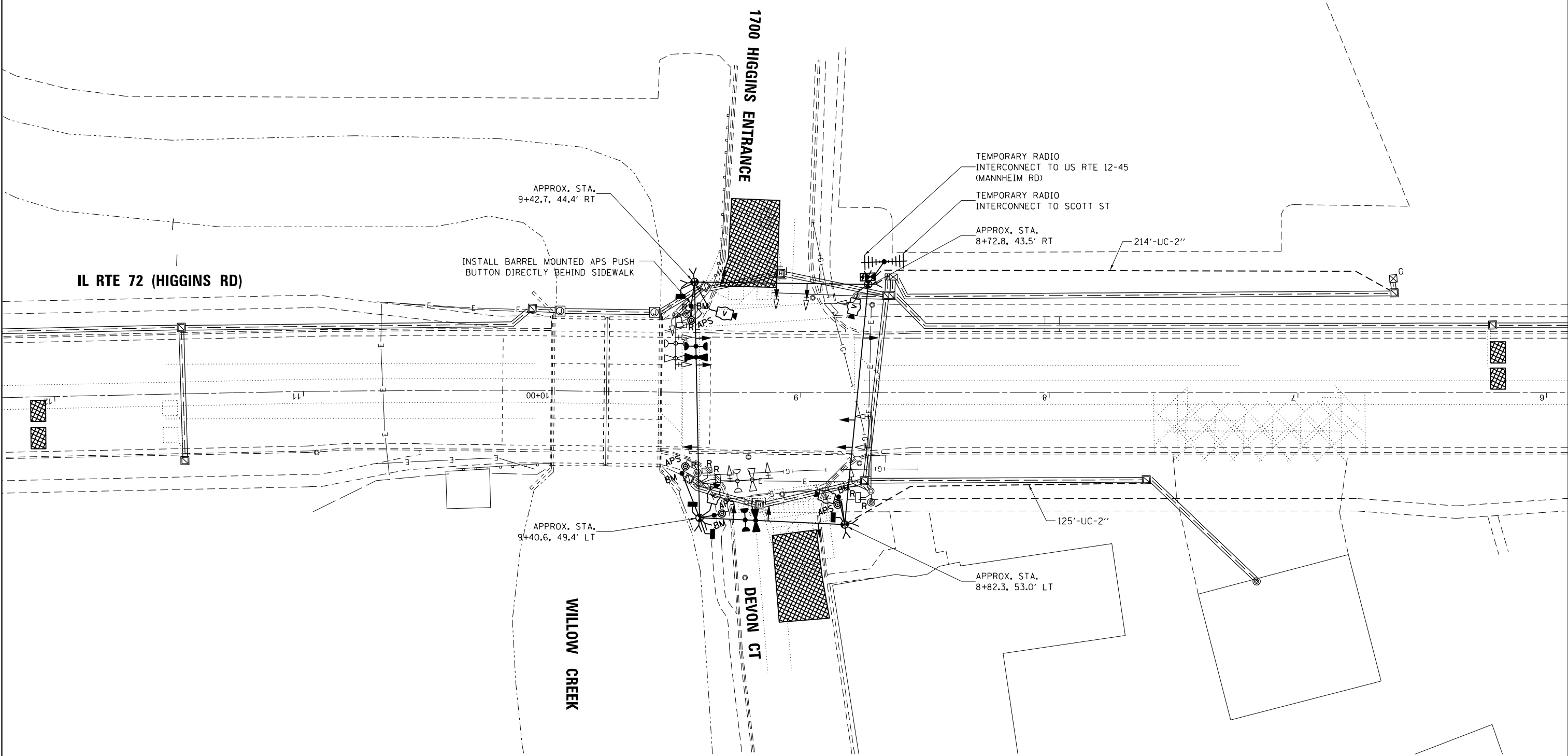
SIDEWALK DETAILS
IL 72 (HIGGINS ROAD) OVER WILLOW CREEK
SCALE: 1" = 5'
SHEET 1 OF 1 SHEETS STA. TO STA.

F.A.U. RTE. 1350	SECTION FAU 1350 22 BJ	COUNTY COOK	TOTAL SHEETS 56	SHEET NO. 20
ILLINOIS FED. AID PROJECT			CONTRACT NO. 62T39	

REMOVAL AND RELOCATION NOTES:

THE FOLLOWING ITEMS SHALL BE REMOVED BY THE CONTRACTOR AND SHALL BE DISPOSED OF BY THEM OUTSIDE THE RIGHT-OF-WAY AT THEIR EXPENSE. THE SALVAGE VALUE OF THE REMOVED EQUIPMENT SHALL BE REFLECTED IN THE CONTRACT BID PRICE.

- 4 EACH PEDESTRIAN SIGNAL HEAD
- 3 EACH PEDESTRIAN PUSH-BUTTON



K:\PROJECTS\Projects\2022\22-IL72-605-IL72-PTB\09-10\043-Millennia-WKS\CADD\Sheets\20-IL-Rte-72-Willow-Creek-Health-Club-Ent-Temp-INT.dgn

GA GANDHI AND ASSOCIATES, INC.
ENGINEERS AND PLANNERS
5035 N. NORTHWEST HIGHWAY
SUITE 306
CHICAGO, ILLINOIS 60630 TEL: (773) 774-590

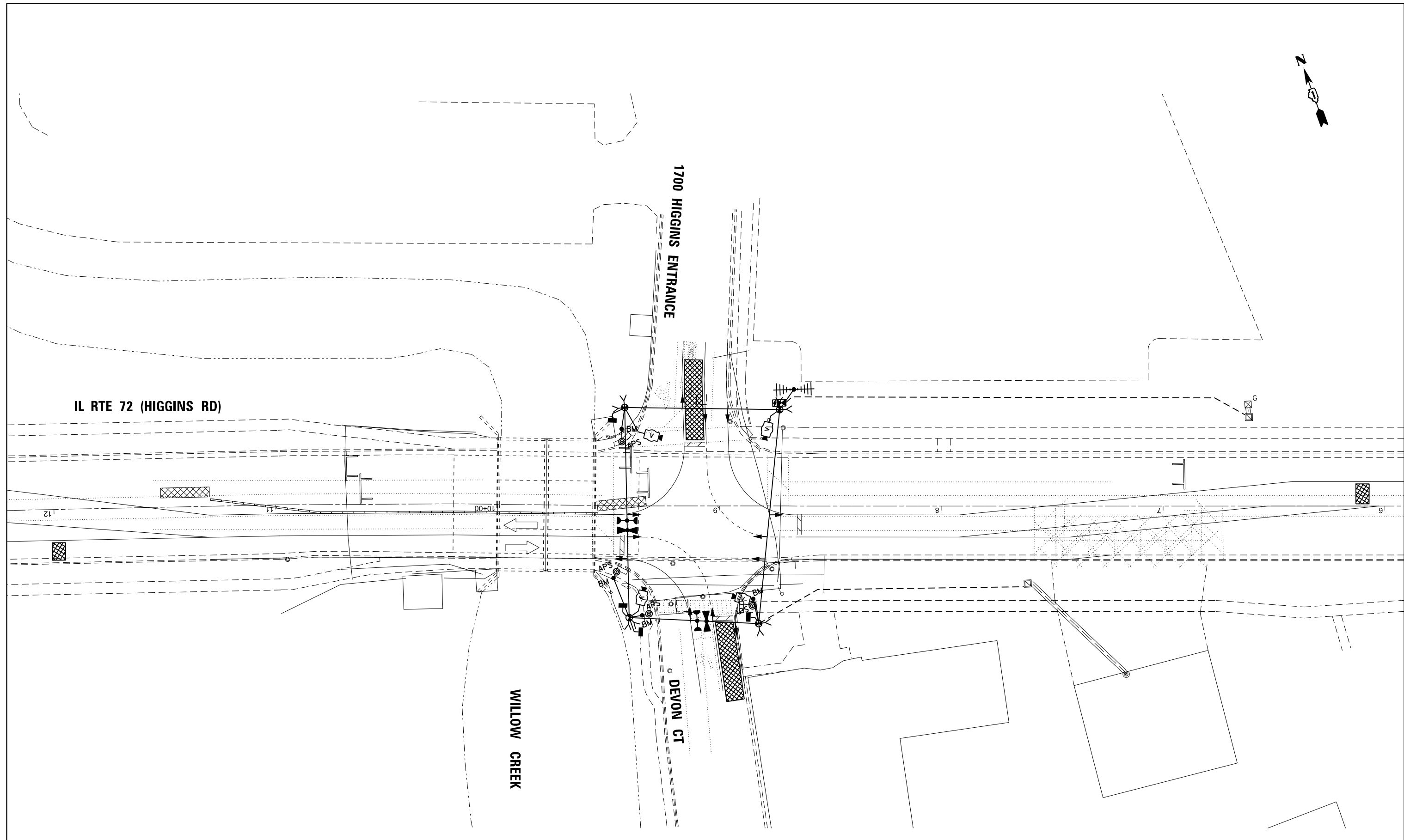
USER NAME = \$USER*	DESIGNED - MAA	REVISED -
DRAWN - MAA	REVISIONS -	
PLOT SCALE = 40.0000' / in.	CHECKED - MS	REVISED -
PLOT DATE = \$DATE*	DATE - 12/29/2022	REVISED -

**STATE OF ILLINOIS
DEPARTMENT OF TRANSPORTATION**

**TEMPORARY TRAFFIC SIGNAL INSTALLATION PLAN AND
REMOVE EXISTING TRAFFIC SIGNAL EQUIPMENT PLAN
IL RTE 72 (HIGGINS RD) AT DEVON CT**

SCALE: 1"=20' SHEET NO. OF SHEETS STA. TO STA.

1 REVISED SHEET 7/19/2023		TS 1102 ECON 146		
F.A.U. RTE.	SECTION	COUNTY	TOTAL SHEETS	SHEET NO.
1350	FAU 1350 22 BJ	COOK	56	21
CONTRACT NO. 62T39				
FED. ROAD DIST. NO. - [ILLINOIS] FED. AID PROJECT				

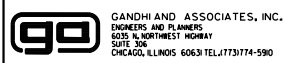


SIGNAL HEAD PLACEMENT FOR STAGE 1

1 REVISED SHEET 7/19/2023

**TS 1102
ECON 146**

K:\PROJECTS\Projects\2022\22-IL72-605-IL72-PTBIB9-10\043_Milestones_WKS\CADD_Sheets\21_IL_Rte_72_Willow_Creek_Health_Club_Entr_TEMP_S1_INT.dgn



GANDHI AND ASSOCIATES, INC.
ENGINEERS AND PLANNERS
5035 N. NORTHWEST HIGHWAY
SUITE 206
CHICAGO, ILLINOIS 60630 TEL: 773/774-590

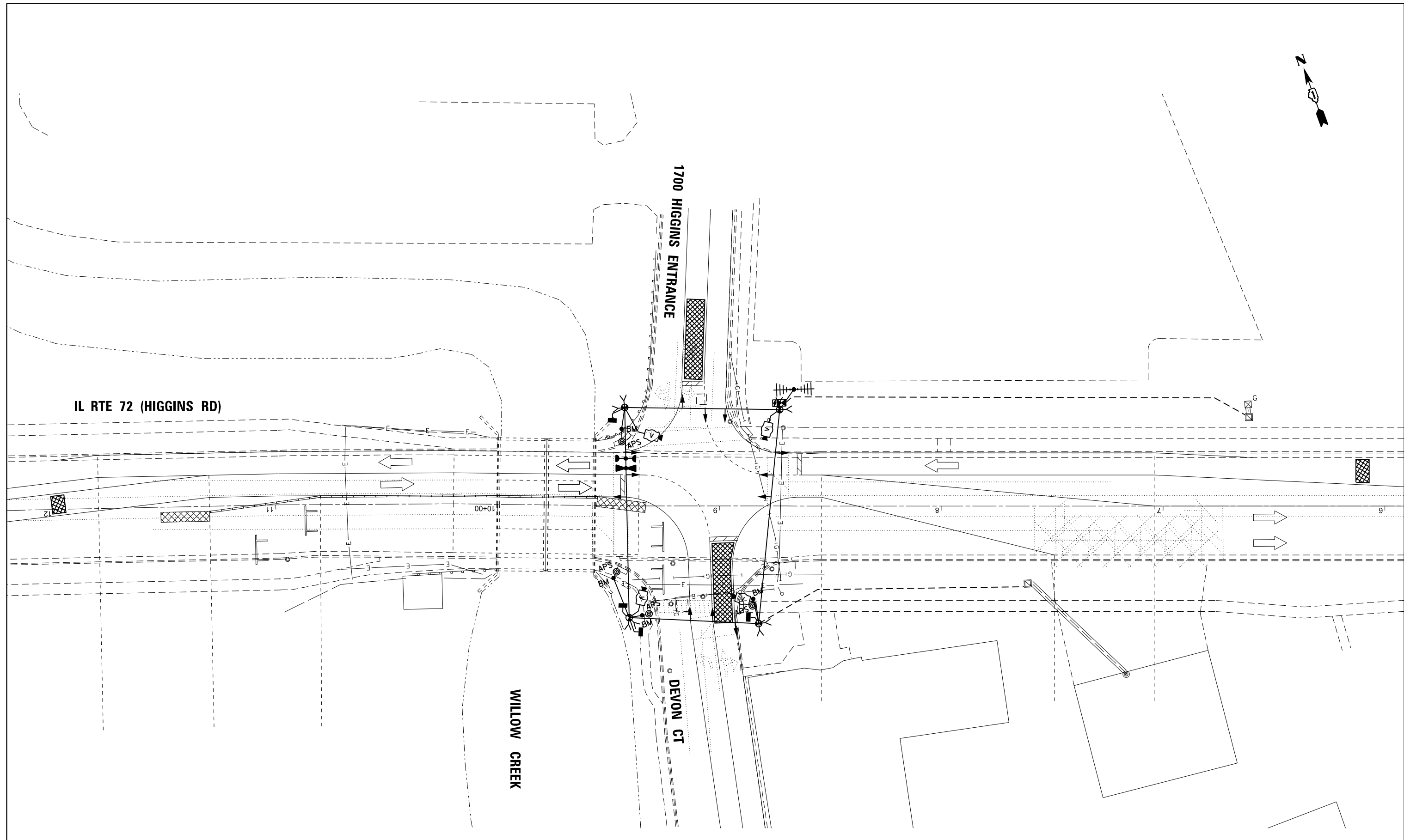
USER NAME = \$USER\$	DESIGNED - MAA	REVISED -
DRAWN - MAA	REVISIONS -	
PLOT SCALE = 40.0000' / in.	CHECKED - MS	REVISED -
PLOT DATE = \$DATE\$	DATE - 12/29/2022	REVISED -

**STATE OF ILLINOIS
DEPARTMENT OF TRANSPORTATION**

**TEMPORARY TRAFFIC SIGNAL INSTALLATION PLAN
IL RTE 72 (HIGGINS RD) AT DEVON CT**

SCALE: 1"=20' SHEET NO. OF SHEETS STA. TO STA.

F.A.U. RTE.	SECTION	COUNTY	TOTAL SHEETS	SHEET NO.
1350	FAU 1350 22 BJ	COOK	56	22
CONTRACT NO. 62T39				
FED. ROAD DIST. NO. - [ILLINOIS] FED. AID PROJECT				



FILE NAME = K:\PROJECTS\Projects 2022\22-IL72-605-IL72-PTB189-10\043-Millennia WKS\CADD\Sheets\22-IL-Rte 72 @ Willow Creek Health Club Ent-TEMP22-INT.dgn

SIGNAL HEAD PLACEMENT FOR STAGE 2

1 REVISED SHEET 7/19/2023 TS 1102
ECON 146

	USER NAME = \$USER\$	DESIGNED - MAA	REVISED -
	PLOT SCALE = 40.0000' / in.	DRAWN - MAA	REVISED -
	PLOT DATE = \$DATE\$	CHECKED - MS	REVISED -
		DATE - 12/29/2022	REVISED -

STATE OF ILLINOIS
DEPARTMENT OF TRANSPORTATION

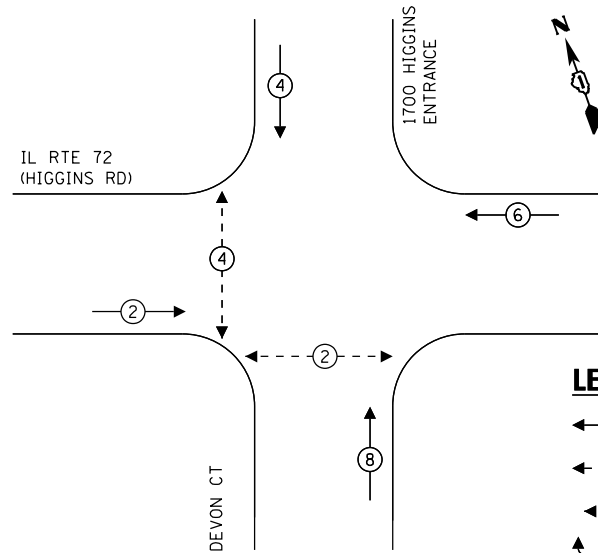
TEMPORARY TRAFFIC SIGNAL INSTALLATION PLAN
IL RTE 72 (HIGGINS RD) AT DEVON CT

SCALE: 1"=20' SHEET NO. OF SHEETS STA. TO STA.

F.A.U. RTE.	SECTION	COUNTY	TOTAL SHEETS	SHEET NO.
1350	FAU 1350 22 BJ	COOK	56	23
CONTRACT NO. 62T39				
FED. ROAD DIST. NO. - [ILLINOIS] FED. AID PROJECT				

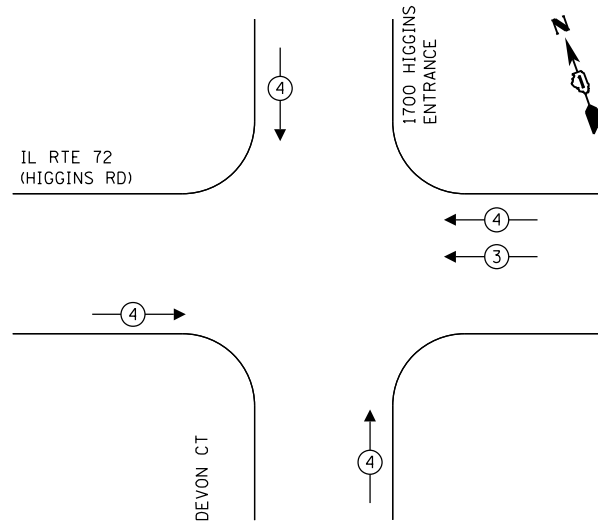
FILE NAME = K:\PROJECTS\Projects\2022\22-IL72-505-IL72_PTB\09-10\043_Millennia_WKS\CADD\Sheets\23_IL_Rte_72_Willow_Creek_Health_Club_Ext_TEMP_CD.dgn

TEMPORARY CONTROLLER SEQUENCE



- LEGEND:**
- ← (⊛) ← PROTECTED PHASE
 - ← (⊛) ← PROTECTED/PERMITTED PHASE
 - ← (⊛) ← PEDESTRIAN PHASE
 - ← (⊛) ← OVERLAP

TEMPORARY EMERGENCY VEHICLE PREEMPTION SEQUENCE



TRAFFIC SIGNAL ELECTRICAL SERVICE REQUIREMENTS

TYPE	NO. OF LAMPS	LED WATTAGE	% OPERATION	TOTAL WATTAGE
SIGNAL (RED)	12	11	50	66.0
(YELLOW)	12	20	5	12.0
(GREEN)	12	12	45	64.8
PERMISSIVE ARROW		10	10	8.0
PED. SIGNAL	4	20	100	80.0
CONTROLLER	1	100	100	100.0
UPS	1	25	100	25.0
VIDEO SYSTEM	1	150	100	150.0
BLANK-OUT SIGN	-	25	5	-
FLASHER	-	-	50	-
STREET NAME SIGN	-	120	50	-
LUMINAIRE	-	240	50	-
TOTAL =				505.8

ENERGY COSTS TO:
 ILLINOIS DEPARTMENT OF TRANSPORTATION
 201 WEST CENTER COURT
 SCHAUMBURG, ILLINOIS 60196-1096
 ENERGY SUPPLY: CONTACT: ELLIE SARALLO
 PHONE: (630) 424-5124
 COMPANY: COMMONWEALTH EDISON
 ACCOUNT NUMBER:

GO GANDHI AND ASSOCIATES, INC.
 ENGINEERS AND PLANNERS
 5015 N. NORTHWEST HIGHWAY
 SUITE 206
 CHICAGO, ILLINOIS 60630 TEL: (773) 774-590

USER NAME = \$USER\$	DESIGNED - MAA	REVISED -
PLOT SCALE = 48.0000' / 1"	DRAWN - MAA	REVISED -
PLOT DATE = \$DATE\$	CHECKED - MS	REVISED -
	DATE - 12/29/2022	REVISED -

**STATE OF ILLINOIS
 DEPARTMENT OF TRANSPORTATION**

**TEMPORARY CABLE PLAN, TEMPORARY PHASE DESIGNATION DIAGRAM, AND
 TEMPORARY EMERGENCY VEHICLE PREEMPTION SEQUENCE
 IL RTE 72 (HIGGINS RD) AT DEVON CT**

SCALE: 1"=20' SHEET NO. OF SHEETS STA. TO STA.

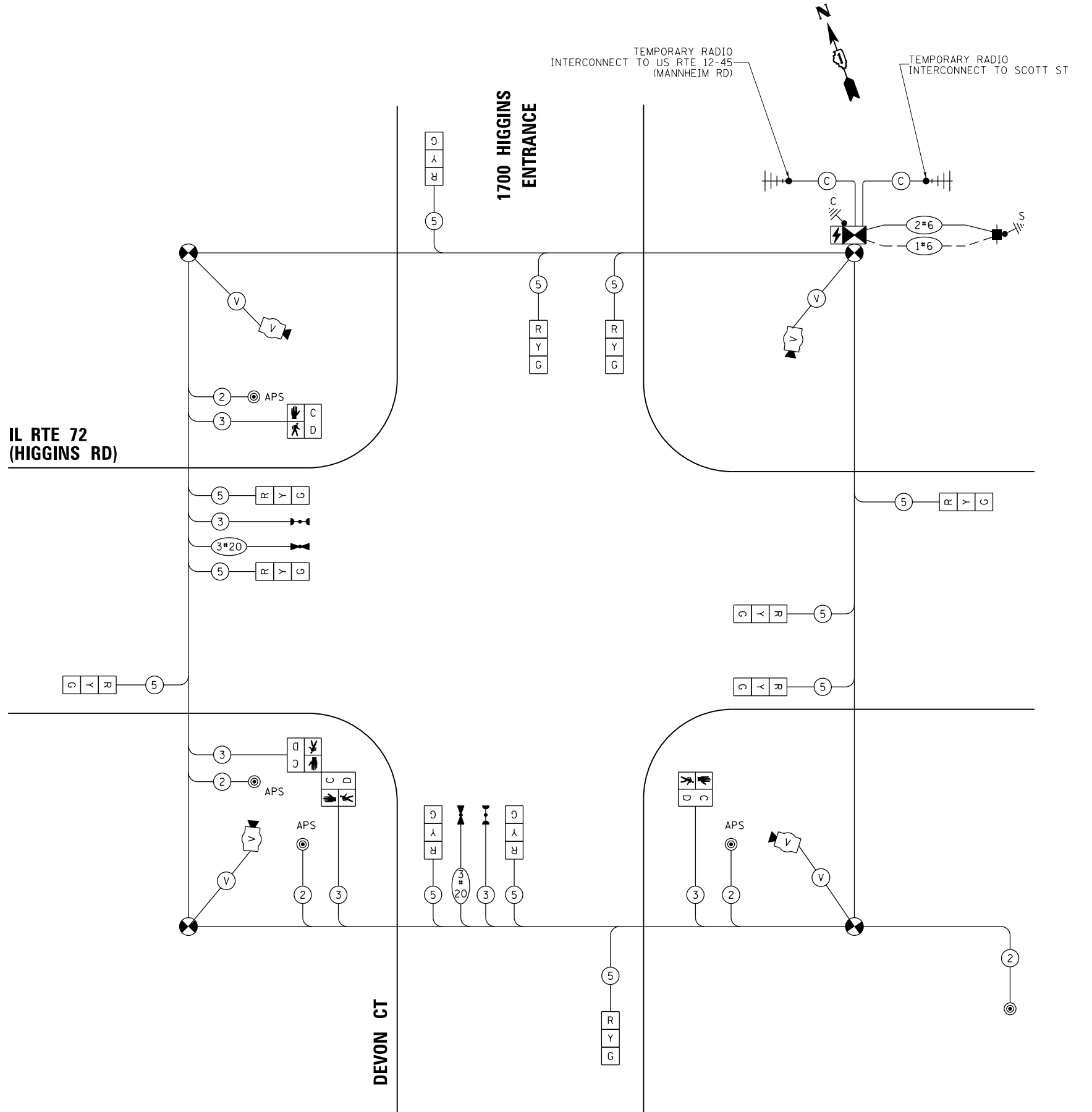
REVISIONS
 1 REVISED SHEET 7/19/2023

**TS 1102
 ECON 146**

F.A.U. RTE.	SECTION	COUNTY	TOTAL SHEETS	SHEET NO.
1350	FAU 1350 22 BJ	COOK	56	24
CONTRACT NO. 62T39				

FED. ROAD DIST. NO. ILLINOIS FED. AID PROJECT

IL RTE 72 (HIGGINS RD)

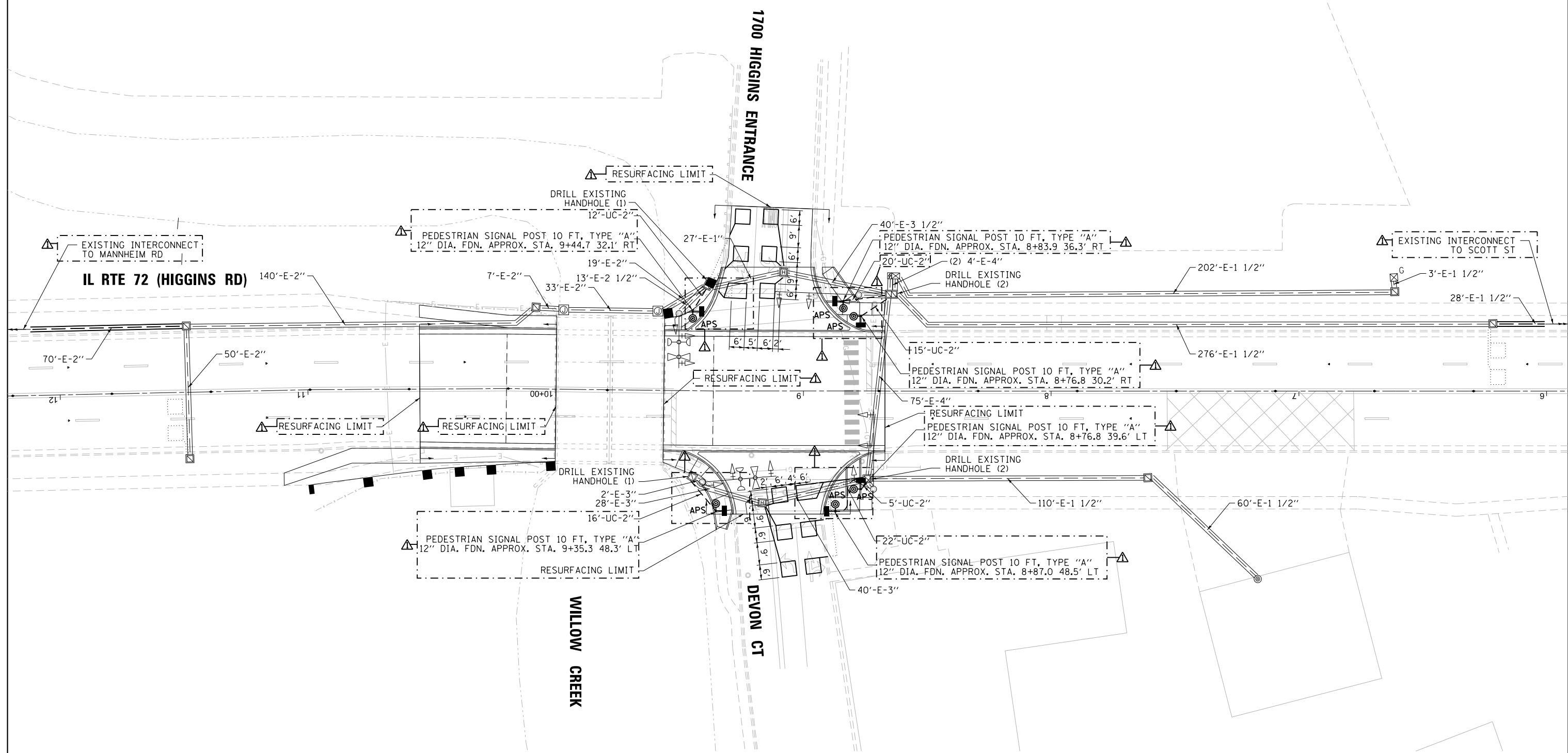


TEMPORARY CABLE PLAN
 (NOT TO SCALE)

NOTES:

CONTRACTOR SHALL CONFIRM THE FINAL LOCATION OF THE PEDESTRIAN EQUIPMENT BEFORE INSTALLATION WITH THE TRAFFIC SIGNAL ENGINEER.

APS SHALL BE PLACED PARALLEL TO THE CORRESPONDING CROSS WALK.



K:\PROJECTS\Projects 2022\22-IL72-605-IL72-PTBIB9-10N043-Millennia WKS\CADD\Sheets\24_IL_Rte_72 @ Willow Creek Health Club Ent_INT.dgn

REVISIED SHEET 7/19/2023 **TS 1102**
ECON 146

<p>GANDHI AND ASSOCIATES, INC. ENGINEERS AND PLANNERS 5035 N. NORTHWEST HIGHWAY SUITE 206 CHICAGO, ILLINOIS 60630 TEL: 773-774-590</p>	USER NAME = \$USER*	DESIGNED - MAA	REVISED - 07-12-23 MAA
	PLOT SCALE = 48.0000' / in.	DRAWN - MAA	REVISED -
	PLOT DATE = \$DATE*	CHECKED - MS	REVISED -
		DATE - 12/29/2022	REVISED -

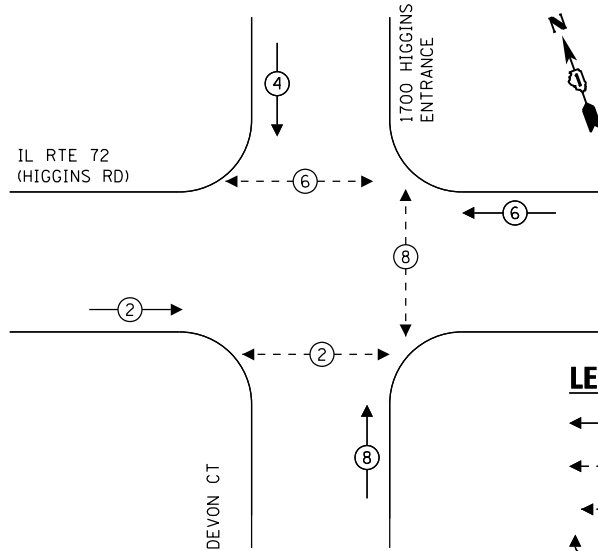
STATE OF ILLINOIS
DEPARTMENT OF TRANSPORTATION

TRAFFIC SIGNAL MODIFICATION PLAN
IL RTE 72 (HIGGINS RD) AT DEVON CT

SCALE: 1"=20' SHEET NO. OF SHEETS STA. TO STA.

F.A.U. RTE.	SECTION	COUNTY	TOTAL SHEETS	SHEET NO.
1350	FAU 1350 22 BJ	COOK	56	25
CONTRACT NO. 62T39				
FED. ROAD DIST. NO. - [ILLINOIS] FED. AID PROJECT				

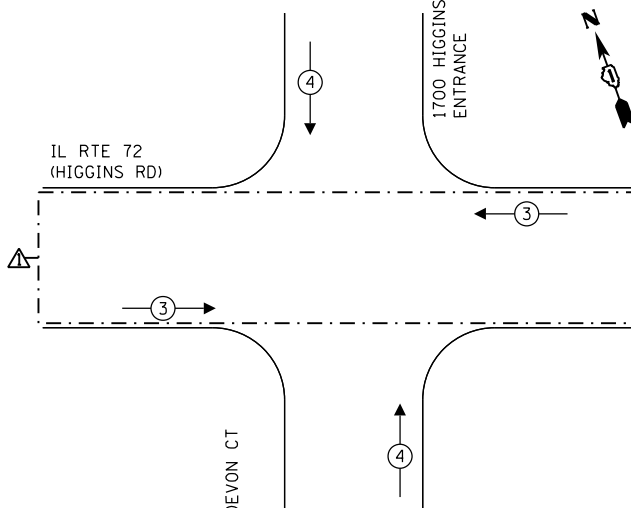
EXISTING CONTROLLER SEQUENCE



LEGEND:

- ← (P) → PROTECTED PHASE
- ← (M) → PROTECTED/PERMITTED PHASE
- ← (P) → PEDESTRIAN PHASE
- ← (OL) → OVERLAP

EXISTING EMERGENCY VEHICLE PREEMPTION SEQUENCE



TRAFFIC SIGNAL ELECTRICAL SERVICE REQUIREMENTS

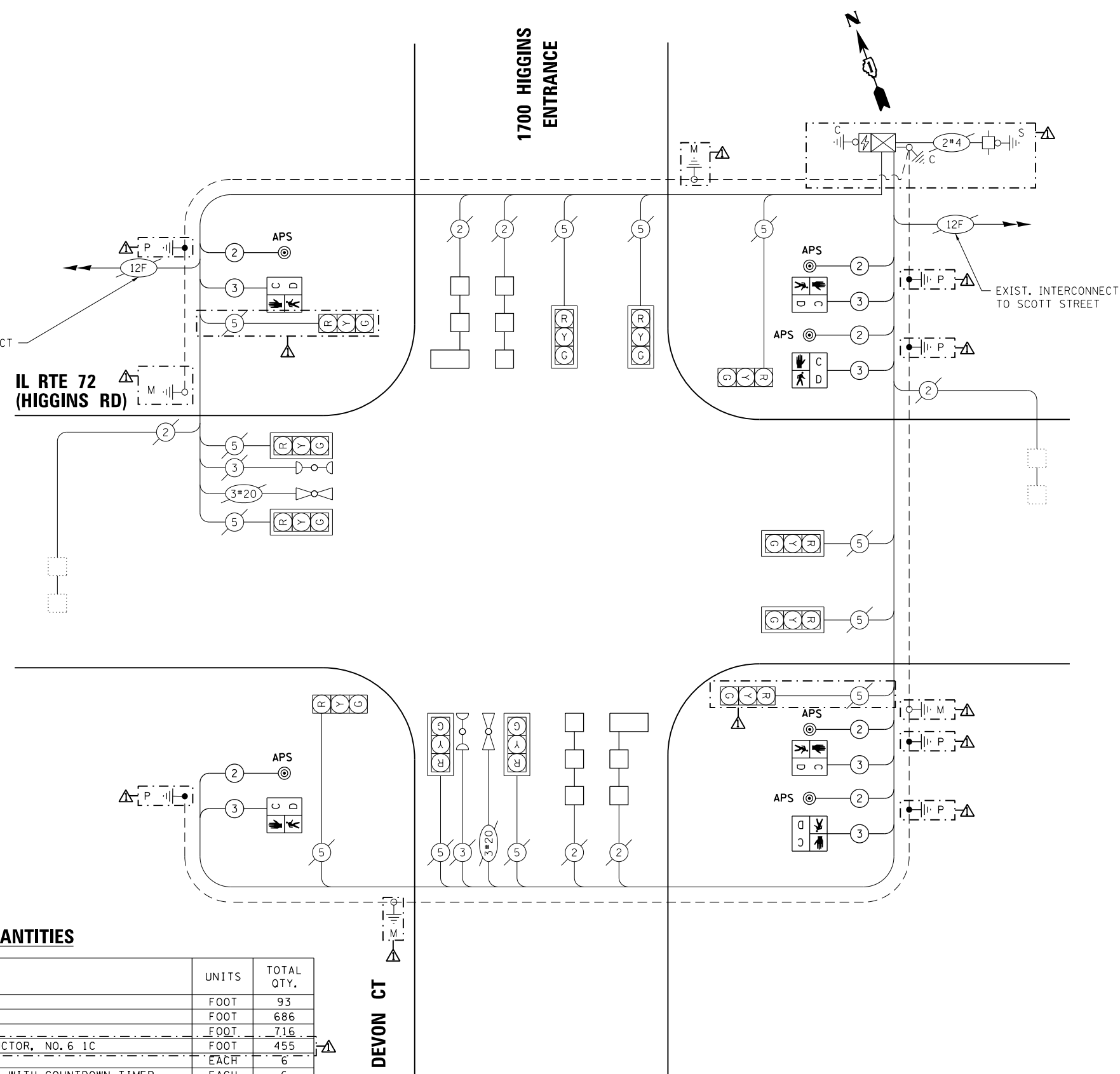
TYPE	NO. OF LAMPS	LED WATTAGE	% OPERATION	TOTAL WATTAGE
SIGNAL (RED)	12	11	50	66.0
(YELLOW)	12	20	5	12.0
(GREEN)	12	12	45	64.8
PERMISSIVE ARROW		10	10	-
PED. SIGNAL	6	20	100	120.0
CONTROLLER	1	100	100	100.0
UPS	1	25	100	25.0
VIDEO SYSTEM		150	100	-
BLANK-OUT SIGN	-	25	5	-
FLASHER	-	-	50	-
STREET NAME SIGN	-	120	50	-
LUMINAIRE	-	240	50	-
TOTAL =				387.8

ENERGY COSTS TO:
 ILLINOIS DEPARTMENT OF TRANSPORTATION
 201 WEST CENTER COURT
 SCHAUMBURG, ILLINOIS 60196-1096
 ENERGY SUPPLY: CONTACT: ELLIE SARALLO
 PHONE: (630) 424-5124
 COMPANY: COMMONWEALTH EDISON
 ACCOUNT NUMBER:

SCHEDULE OF QUANTITIES

ITEM DESCRIPTION	UNITS	TOTAL QTY.
UNDERGROUND CONDUIT, GALVANIZED STEEL, 2" DIA.	FOOT	93
ELECTRIC CABLE IN CONDUIT, SIGNAL NO. 14 2C	FOOT	686
ELECTRIC CABLE IN CONDUIT, SIGNAL NO. 14 3C	FOOT	716
ELECTRIC CABLE IN CONDUIT, EQUIPMENT GROUNDING CONDUCTOR, NO. 6 1C	FOOT	455
DRILL EXISTING HANDHOLE	EACH	6
PEDESTRIAN SIGNAL HEAD, LED, 1-FACE, BRACKET MOUNTED WITH COUNTDOWN TIMER	EACH	6
DETECTOR LOOP REPLACEMENT	FOOT	412
TEMPORARY TRAFFIC SIGNAL INSTALLATION	EACH	1
REMOVE ELECTRIC CABLE FROM CONDUIT	FOOT	1300
REMOVE EXISTING TRAFFIC SIGNAL EQUIPMENT	EACH	1
PEDESTRIAN SIGNAL POST, 10 FT	EACH	6
ACCESSIBLE PEDESTRIAN SIGNALS	EACH	6
CONCRETE FOUNDATION, TYPE A 12-INCH DIAMETER	FOOT	24

CABLE PLAN
(NOT TO SCALE)



FILE NAME = K:\PROJECTS\Projects\2022\22-IL-72-905-IL-72_PTB\09-10\043_M\Items\WKS\CADD\Sheets\25-IL_Rte_72 @ Willow Creek Health Club Ent_CD.dgn



USER NAME = \$USER\$
 DESIGNED - MAA
 DRAWN - MAA
 CHECKED - MS
 DATE - 12/29/2022

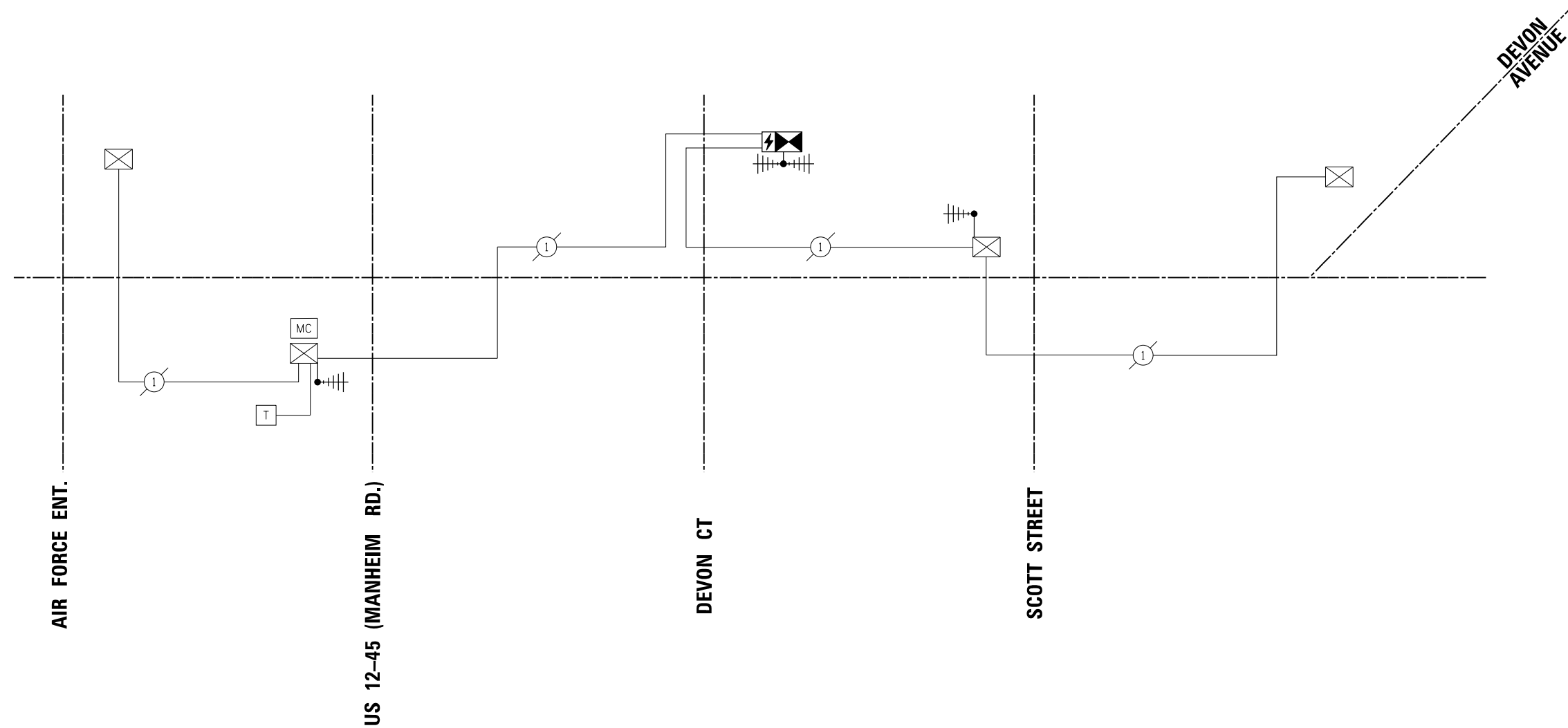
REVISED - 07-12-23 MAA
 REVISED -
 REVISED -
 REVISED -

**STATE OF ILLINOIS
 DEPARTMENT OF TRANSPORTATION**

**MODIFIED CABLE PLAN, SCHEDULE OF QUANTITIES, EXISTING CONTROLLER &
 EMERGENCY VEHICLE SEQUENCE, TRAFFIC SIGNAL ELECTRICAL SERVICE REQUIREMENTS
 IL RTE 72 (HIGGINS RD) AT DEVON CT**

REVISED SHEET 7/19/2023		TS 1102 ECON 146	
FAU-1350	SECTION 1350 22 BJ	COUNTY COOK	TOTAL SHEETS 56
SCALE: 1"=20'		SHEET NO. OF SHEETS STA. TO STA.	
FED. ROAD DIST. NO. ILLINOIS FED. AID PROJECT		CONTRACT NO. 62T39	

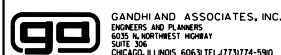
IL RTE 72
(HIGGINS RD)



SCHEDULE OF QUANTITIES

ITEM DESCRIPTION	UNITS	TOTAL QTY.
MAINTENANCE OF EXISTING TRAFFIC SIGNAL INSTALLATION	EACH	3
TEMPORARY TRAFFIC SIGNAL TIMING	EACH	1

FILE NAME = K:\PROJECTS\Projects\2022\22-IL72-605-IL72-PTB\09-10\043-Milemto-WKS\CADD\Sheets\26-IL-Rte-72-Temp-Schematic.dgn



USER NAME = \$USER\$	DESIGNED - MAA	REVISED - 07-12-23 MAA
DRAWN - MAA	CHECKED - MS	REVISED -
PLOT SCALE = 100.00' / 1" =	DATE - 12/29/2022	REVISED -
PLOT DATE = \$DATE\$		

**STATE OF ILLINOIS
DEPARTMENT OF TRANSPORTATION**

**TEMPORARY INTERCONNECT SCHEMATIC & SCHEDULE OF QUANTITIES
IL RTE 72 (HIGGINS RD)
FROM AIR FORCE ENT TO DEVON AVE**

REVISED SHEET 7/19/2023

**TS 1102
ECON 146**

SCALE: 1" = 20'	SHEET NO. 01 OF 2 SHEETS	STA. 0+00 TO STA. 0+00	F.A.U. RTE. 1350	SECTION FAU 1350 22 BJ	COUNTY COOK	TOTAL SHEETS 56	SHEET NO. 27	CONTRACT NO. 62T39	FED. ROAD DIST. NO. ILLINOIS FED. AID PROJECT
-----------------	--------------------------	------------------------	------------------	------------------------	-------------	-----------------	--------------	--------------------	---

IL RTE 72
(HIGGINS RD)

AIR FORCE ENT.

US 12-45 (MANHEIM RD.)

DEVON CT

SCOTT STREET

DEVON AVENUE

SCHEDULE OF QUANTITIES

ITEM DESCRIPTION	UNITS	TOTAL QTY.
RE-OPTIMIZE TRAFFIC SIGNAL SYSTEM LEVEL 1	EACH	1

K:\PROJECTS\Projects\2022\22-IL72-605-IL72-PTBIB9-10\043-Milemto-WKS\CADD\Sheets\27-IL Rte 72-Prop.Schematic.dgn



USER NAME = \$USER\$	DESIGNED - -	REVISED - 07-12-23 MAA
DRAWN - -	REVISIONS - -	REVISIONS - -
PLOT SCALE = 100.00' / 1" =	CHECKED - -	REVISIONS - -
PLOT DATE = \$DATE\$	DATE - -	REVISIONS - -

**STATE OF ILLINOIS
DEPARTMENT OF TRANSPORTATION**

**EXISTING INTERCONNECT SCHEMATIC & SCHEDULE OF QUANTITIES
IL RTE 72 (HIGGINS RD) FROM AIR FORCE ENT TO DEVON AVE**

SCALE: _____ SHEET NO. _____ OF _____ SHEETS STA. _____ TO STA. _____

REVISED SHEET 7/19/2023		TS 1102 ECON 146	
F.A.U. RTE.	SECTION	COUNTY	TOTAL SHEETS
1350	FAU 1350 22 BJ	COOK	56
			SHEET NO. 28
CONTRACT NO. 62T39			
FED. ROAD DIST. NO. . ILLINOIS FED. AID PROJECT			