

STATE OF ILLINOIS
DEPARTMENT OF TRANSPORTATION

F.A.P. RTE.	SECTION	COUNTY	TOTAL SHEETS	SHEET NO.
330	FAP 0330 22 BJ3	COOK	23	1
		ILLINOIS	CONTRACT NO. 62T05	

FOR INDEX OF SHEETS, SEE SHEET NO. 2

TRAFFIC DATA

U.S. ROUTE 45:

2021 ADT = 18,100

SPEED LIMIT = 45 MPH

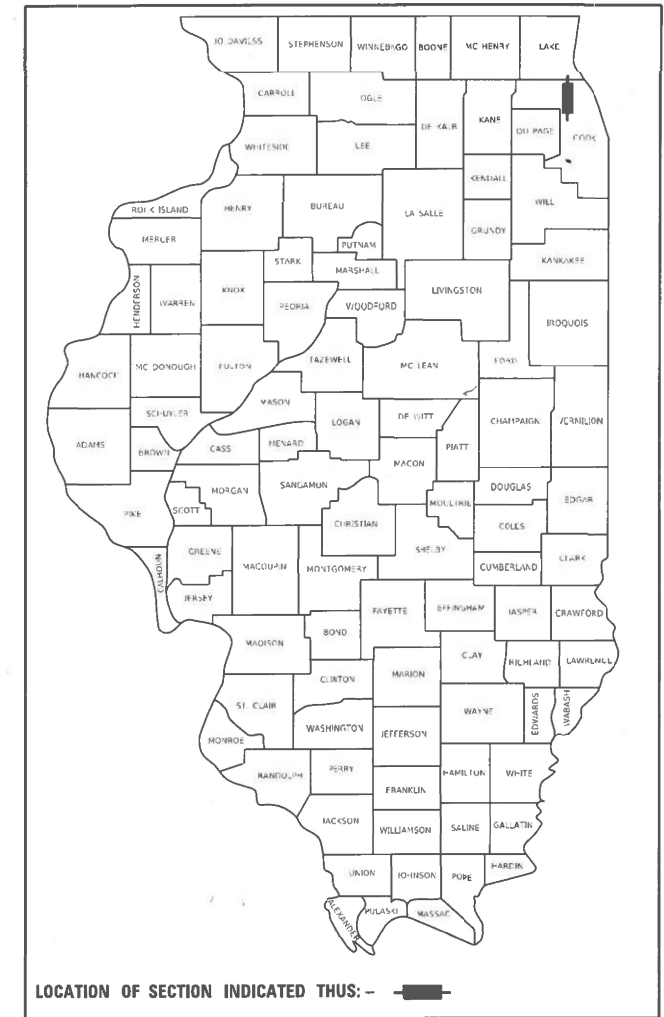
DESIGN CLASSIFICATION:

OTHER PRINCIPAL ARTERIAL

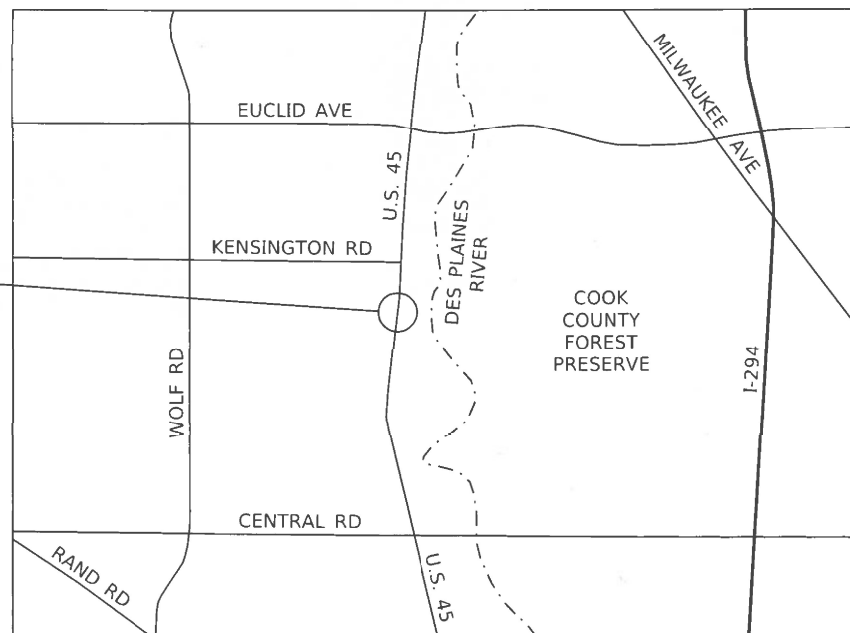
PROPOSED HIGHWAY PLANS

**FAP 330: US ROUTE 45 (DES PLAINES RIVER RD)
AT MCDONALD CREEK (N OF ENCLAVE DR)
SECTION: FAP 0330 22 BJ3
PROJECT: NHPP-JG1Z(895)
BRIDGE DECK OVERLAY, BRIDGE JOINT
REPLACEMENT AND REPAIR
COOK COUNTY**

D-91-229-22



C-91-282-22



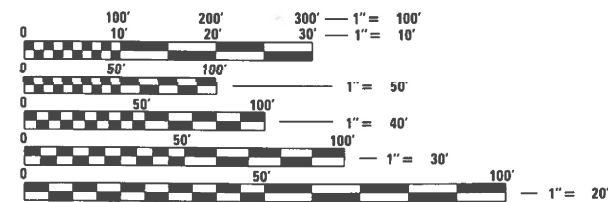
LOCATION MAP

NOT TO SCALE

GROSS LENGTH = 105.5 FT. = 0.02 MILE
NET LENGTH = 105.5 FT. = 0.02 MILE

**THE PROJECT IS LOCATED IN
UNINCORPORATED MOUNT PROSPECT**

**U.S. ROUTE 45
S.N. 016-2418**



FULL SIZE PLANS HAVE BEEN PREPARED USING STANDARD ENGINEERING SCALES. REDUCED SIZED PLANS WILL NOT CONFORM TO STANDARD SCALES. IN MAKING MEASUREMENTS ON REDUCED PLANS, THE ABOVE SCALES MAY BE USED.

J.U.L.I.E.
JOINT UTILITY LOCATION INFORMATION FOR EXCAVATORS
1-800-892-0123
OR 811

PROJECT ENGINEER: LUKASZ POCIECHA (847) 705-4255
PROJECT MANAGER: FAWAD AQUEEL (847) 705-4211

CONTRACT NO. 62T05

CONSULTING ENGINEERS  **BLA, Inc.**
333 PIERCE ROAD SUITE 200 ITASCA, IL 60143
P:(630) 438 6400 F:(630) 438 6444 www.bla-inc.com
ILLINOIS * INDIANA



Signed: *John P. O'Neill*
Date: 04/18/2023
License Expires: 11/30/2023

STATE OF ILLINOIS
DEPARTMENT OF TRANSPORTATION

SUBMITTED May 8 2023
Jose Pineda REGIONAL ENGINEER
June 30, 2023
John A. Etkin
ENGINEER OF DESIGN AND ENVIRONMENT
June 30, 2023
Stephen M. Smith
DIRECTOR OF HIGHWAYS PROJECT IMPLEMENTATION

**PRINTED BY THE AUTHORITY
OF THE STATE OF ILLINOIS**

INDEX OF SHEETS

1	COVER SHEET
2	INDEX, HIGHWAY STANDARDS, GENERAL NOTES
3-4	SUMMARY OF QUANTITIES
5	ALIGNMENT, TIES, AND BENCHMARKS
6-9	STAGING PLANS
10	PAVEMENT MARKING & LANDSCAPING PLANS
11-17	STRUCTURAL PLANS
18-23	DISTRICT DETAILS

DISTRICT ONE DETAILS

BD-33	HMA TAPER AT EDGE OF PCC PAVEMENT
TC-10	TRAFFIC CONTROL & PROTECTION FOR SIDEROADS, INTERSECTIONS & DRIVEWAYS
TC-11	RAISED REFLECTIVE PAVEMENT MARKERS (SNOW-PLOW RESISTANT)
TC-13	DISTRICT ONE TYPICAL PAVEMENT MARKINGS
TC-22	ARTERIAL ROAD INFORMATION SIGN
TC-26	DRIVEWAY ENTRANCE SIGNING

HIGHWAY STANDARDS

000001-08	STANDARD SYMBOLS, ABBREVIATIONS AND PATTERNS
001006	DECIMAL OF AN INCH AND OF A FOOT
280001-07	TEMPORARY EROSION CONTROL SYSTEMS
701301-04	LANE CLOSURE, 2L, 2W, SHORT TIME OPERATIONS
701311-03	LANE CLOSURE, 2L, 2W MOVING OPERATIONS- DAY ONLY
701426-09	LANE CLOSURE, MULTILANE, INTERMITTENT OR MOVING OPER., SPD >= 45 MPH
701427-05	LANE CLOSURE, MULTILANE, INTERMITTENT OR MOVING OPER., SPD <= 40 MPH
701611-01	URBAN HALF-RD CLOSURE, MULTILANE, 2W W/ MOUNTABLE MEDIAN
701801-06	SIDEWALK, CORNER OR CROSSWALK CLOSURE
701901-08	TRAFFIC CONTROL DEVICES
704001-08	TEMPORARY CONCRETE BARRIER
780001-05	TYPICAL PAVEMENT MARKINGS
781001-04	TYPICAL APPLICATIONS RAISED REFLECTIVE PAVEMENT MARKERS
782006-01	GUARDRAIL AND BARRIER WALL REFLECTOR MOUNTING DETAILS

GENERAL NOTES

- BEFORE STARTING ANY EXCAVATION, THE CONTRACTOR SHALL CALL "J.U.L.I.E." AT (800) 892-0123 OR 811 FOR FIELD LOCATIONS OF BURIED ELECTRIC, TELEPHONE AND GAS UTILITIES. 48 HOURS NOTIFICATION IS REQUIRED.
- THE CONTRACTOR SHALL COORDINATE CONSTRUCTION ACTIVITIES WITH UTILITY COMPANIES AND WITH LOCAL EMERGENCY SERVICES AND THE VILLAGE OF CRESTWOOD.
- THE CONTRACTOR WILL NOT BE ALLOWED TO SET UP A YARD OR FIELD OFFICE ON STATE OR VILLAGE PROPERTY WITHOUT WRITTEN PERMISSION FROM THE DEPARTMENT.
- THE RESIDENT ENGINEER SHALL CONTACT AREA TRAFFIC FIELD ENGINEER FADI SULTAN AT FADISULTAN@ILLINOIS.GOV A MINIMUM OF TWO WEEKS PRIOR TO PLACEMENT OF PERMANENT PAVEMENT MARKINGS.
- THE CONTRACTOR SHALL COORDINATE CONSTRUCTION ACTIVITIES WITH AFFECTED UTILITY COMPANIES AND THE VILLAGE OF MOUNT PROSPECT.
- DO NOT SCALE PLANS FOR CONSTRUCTION DIMENSIONS.
- THE CONTRACTOR SHALL TAKE CARE IN REMOVING OR EXCAVATING NEAR ALL EXISTING ITEMS WHICH WILL REMAIN. ANY DAMAGE DONE TO EXISTING ITEMS BY THE CONTRACTOR SHALL BE REPAIRED AT THE CONTRACTOR'S EXPENSE.
- DURING CONSTRUCTION OPERATIONS, IF ANY LOOSE MATERIAL IS DEPOSITED IN THE FLOWLINE OF DRAINAGE STRUCTURES SUCH THAT THE NATURAL FLOW OF WATER IS OBSTRUCTED, THE MATERIAL SHALL BE REMOVED AT THE CLOSE OF EACH WORKDAY. THIS WORK WILL NOT BE PAID SEPARATELY BUT SHALL BE INCLUDED IN THE COST OF THE CONTRACT.
- THE CONTRACTOR SHALL OBTAIN ALL NECESSARY PERMITS, AS REQUIRED, PRIOR TO COMMENCING WITH CONSTRUCTION. ANY COST ASSOCIATED WITH OBTAINING THESE PERMITS SHALL BE CONSIDERED INCLUDED IN THE CONTRACT UNIT PRICE FOR THE ITEMS BEING INSTALLED.
- POLLUTION CONTROL: THE CONTRACTOR SHALL BE REQUIRED TO COMPLY WITH STATE REGULATIONS REGARDING AIR, WATER, AND NOISE POLLUTION. THIS WORK WILL NOT BE PAID FOR SEPARATELY BUT SHALL BE CONSIDERED INCLUDED IN THE COST OF THE CONTRACT.
- THE COST OF SAW CUTTING, (FULL DEPTH) SHALL BE INCLUDED IN THE UNIT PRICES FOR THE VARIOUS REMOVAL PAY ITEMS.
- 10 FOOT TRANSITIONS SHALL BE USED TO MATCH PROPOSED CURB & GUTTER AND MEDIANS TO THE EXISTING CURB & GUTTER AND MEDIANS IN THE FIELD UNLESS OTHERWISE SHOWN. THE TRANSITION SHALL BE CONSIDERED INCLUDED IN THE COST OF THE ITEM(S) OF WORK.
- TREES (3) INCHES OR GREATER IN DIAMETER AT BREAST HEIGHT WILL NOT BE CLEARED BETWEEN APRIL 1 AND OCTOBER 31.
- ANY DAMAGE TO EXISTING PAVEMENT MARKINGS OR RAISED REFLECTIVE PAVEMENT MARKERS OUTSIDE THE REMOVAL LIMITS SHOWN ON THE PLANS SHALL BE REPLACED AT NO ADDITIONAL COST TO THE DEPARTMENT.
- BEFORE BEGINNING ANY WORK, THE CONTRACTOR SHALL RETAIN AND RECORD FOR FUTURE REFERENCE ALL EXISTING PAVEMENT MARKING LINES (AND RAISED REFLECTIVE PAVEMENT MARKERS) IN ORDER THAT THESE LOCATIONS CAN BE RE-ESTABLISHED FOR STRIPING AT THE COMPLETION OF THIS CONTRACT. EXACT LOCATIONS OF ALL PAVEMENT MARKINGS SHALL BE AS SHOWN ON THE PLANS OR AS DIRECTED BY THE ENGINEER.

HOT-MIX ASPHALT MIXTURE REQUIREMENTS CHART

MIXTURE TYPE	AIR VOIDS @ N DES	QMP
HMA OVERLAY		
HMA SURFACE COURSE, 1L-9.5, MIX "D" N70	4% @ 70 GYR.	QC/QA
QMP DESIGNATION: QUALITY CONTROL/QUALITY ASSURANCE (QC/QA)		

NOTES:

- THE UNIT WEIGHT USED TO CALCULATE ALL HOT-MIX ASPHALT SURFACE MIXTURE QUANTITIES IS 112 LB/SQ YD/IN.
- THE AC TYPE FOR POLYMERIZED HMA MIXES SHALL BE SBS/SBR PG 76-22 AND FOR NON-POLYMERIZED HMA THE AC TYPE SHALL BE PG 64-22 UNLESS MODIFIED BY RECLAIMED MATERIALS SPECIFICATIONS.

MODEL Path: H:\195-002_EFK_Mean_USA5_Overby\CAD_Sheets\Sheet_General_Notes.dgn



USER NAME = WTeng	DESIGNED - WT	REVISOR -
PLOT SCALE = 20,0000 * / in.	CHECKED - JPO	REVISIONS -
PLOT DATE = 5/8/2023	DATE - 05/04/2023	

DRAWN -	REVISOR -
CHECKED - JPO	REVISIONS -
DATE - 05/04/2023	

STATE OF ILLINOIS
DEPARTMENT OF TRANSPORTATION

U.S. 45 OVER MCDONALD CREEK	
INDEX, STANDARDS AND GENERAL NOTES	
SCALE: _____	SHEET 1 OF 1 SHEETS STA. _____ TO STA. _____

F.A.P. RTE.	SECTION	COUNTY	TOTAL SHEETS	SHEET NO.
330	FAP 0330 22 BJ3	COOK	23	2
CONTRACT NO. 62T05				
ILLINOIS FED. AID PROJECT				

CODE NO.	ITEM	UNIT	URBAN TOTAL QUANTITY	CONSTRUCTION CODE	
				80% FED 20% STATE	80% FED 20% STATE
				ROADWAY	BRIDGE
				0005	0047
					S.N. 016-2418
28000510	INLET FILTERS	EACH	1	1	
40600290	BITUMINOUS MATERIALS (TACK COAT)	POUND	104		104
40604062	HOT-MIX ASPHALT SURFACE COURSE, IL-9.5, MIX "D", N70	TON	26	26	
50300260	BRIDGE DECK GROOVING	SQ YD	364		364
50300300	PROTECTIVE COAT	SQ YD	486		486
67100100	MOBILIZATION	L SUM	1	1	
70107025	CHANGEABLE MESSAGE SIGN	CAL DA	100	100	
70300150	SHORT TERM PAVEMENT MARKING REMOVAL	SQ FT	1941	1941	
70307120	TEMPORARY PAVEMENT MARKING - LINE 4" - TYPE IV TAPE	FOOT	5703	5703	
70307160	TEMPORARY PAVEMENT MARKING - LINE 12" - TYPE IV TAPE	FOOT	40	40	
70400100	TEMPORARY CONCRETE BARRIER	FOOT	325	325	
70400200	RELOCATE TEMPORARY CONCRETE BARRIER	FOOT	325	325	
70600255	IMPACT ATTENUATORS, TEMPORARY (FULLY REDIRECTIVE, NARROW), TEST LEVEL 2	EACH	2	2	
70600322	IMPACT ATTENUATORS, RELOCATE (FULLY REDIRECTIVE, NARROW), TEST LEVEL 2	EACH	2	2	

* SPECIALTY ITEM

CODE NO.	ITEM	UNIT	URBAN TOTAL QUANTITY	CONSTRUCTION CODE	
				80% FED 20% STATE	80% FED 20% STATE
				ROADWAY	BRIDGE
				0005	0047
					S.N. 016-2418
* 78000200	THERMOPLASTIC PAVEMENT MARKING - LINE 4"	FOOT	1954	1954	
* 78004635	PREFORMED PLASTIC PAVEMENT MARKING, TYPE D - STANDARD - LINE 7"	FOOT	20	20	
* 78009004	MODIFIED URETHANE PAVEMENT MARKING - LINE 4"	FOOT	132	132	
* 78011040	GROOVING FOR RECESSED PAVEMENT MARKING 8"	FOOT	20	20	
* 78100100	RAISED REFLECTIVE PAVEMENT MARKER	EACH	4	4	
* 78100300	REPLACEMENT REFLECTOR	EACH	86	86	
78300200	RAISED REFLECTIVE PAVEMENT MARKER REMOVAL	EACH	14		14
78300202	PAVEMENT MARKING REMOVAL - WATER BLASTING	SQ FT	702	702	
X0326766	CLEAN & RESEAL RELIEF JOINT	FOOT	104		104
X6700407	ENGINEER'S FIELD OFFICE, TYPE A (D1)	CAL MO	6	6	
X7010216	TRAFFIC CONTROL AND PROTECTION, (SPECIAL)	L SUM	1	1	
Z0001700	APPROACH SLAB REPAIR (FULL DEPTH)	SQ YD	14		14
Z0001800	APPROACH SLAB REPAIR (PARTIAL DEPTH)	SQ YD	18		18
Z0006014	BRIDGE DECK LATEX CONCRETE OVERLAY, 2 1/2 INCHES	SQ YD	379		379

* SPECIALTY ITEM

MODEL: Default
FILE NAME: W:\195-002_EFK_Mean_US45_Overby\CAD_Sheets\Sheet_500.dgn



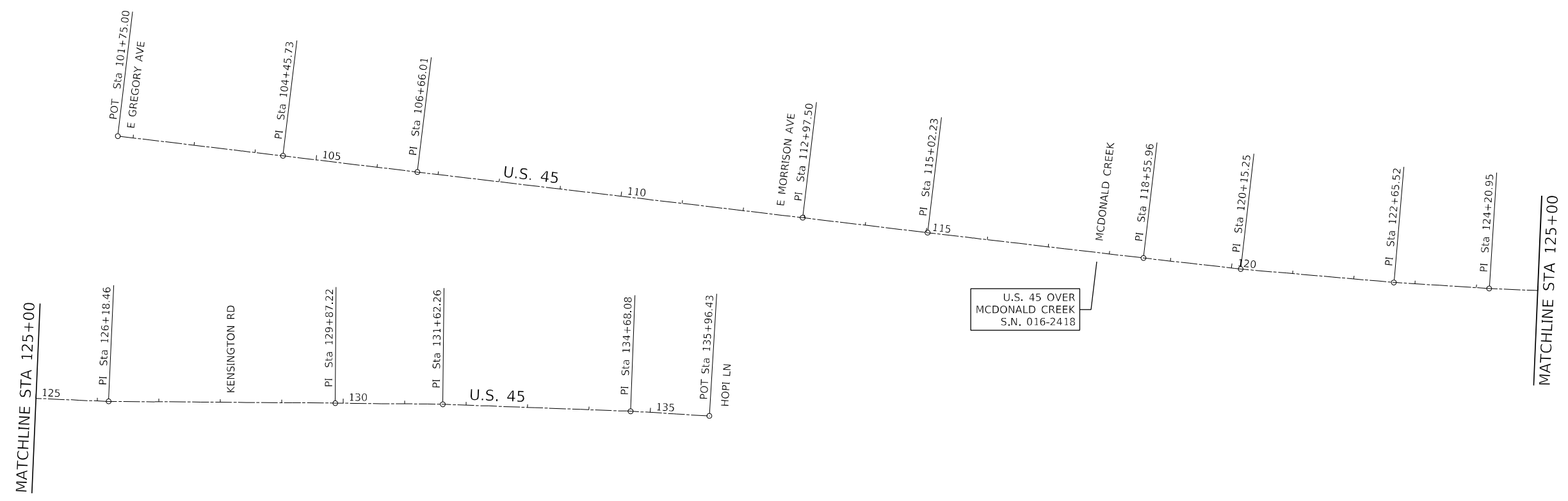
USER NAME = WTeng	DESIGNED - WT	REVISED -
	DRAWN -	REVISED -
PLOT SCALE = 20.0000' / in.	CHECKED - JPO	REVISED -
PLOT DATE = 5/8/2023	DATE - 05/04/2023	REVISED -

**STATE OF ILLINOIS
DEPARTMENT OF TRANSPORTATION**

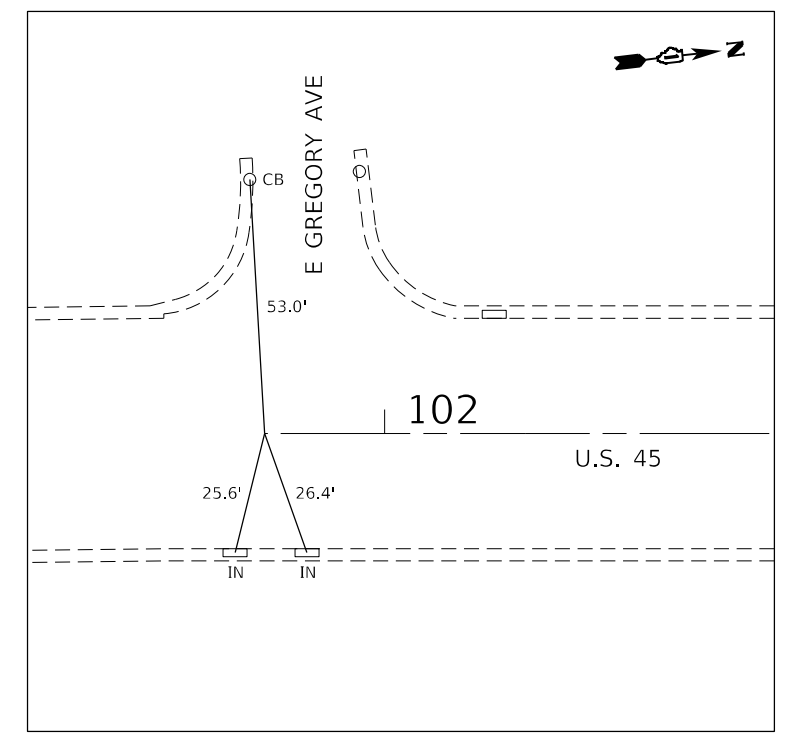
**U.S. 45 OVER MCDONALD CREEK
SUMMARY OF QUANTITIES**

SCALE: SHEET 1 OF 2 SHEETS STA. TO STA.

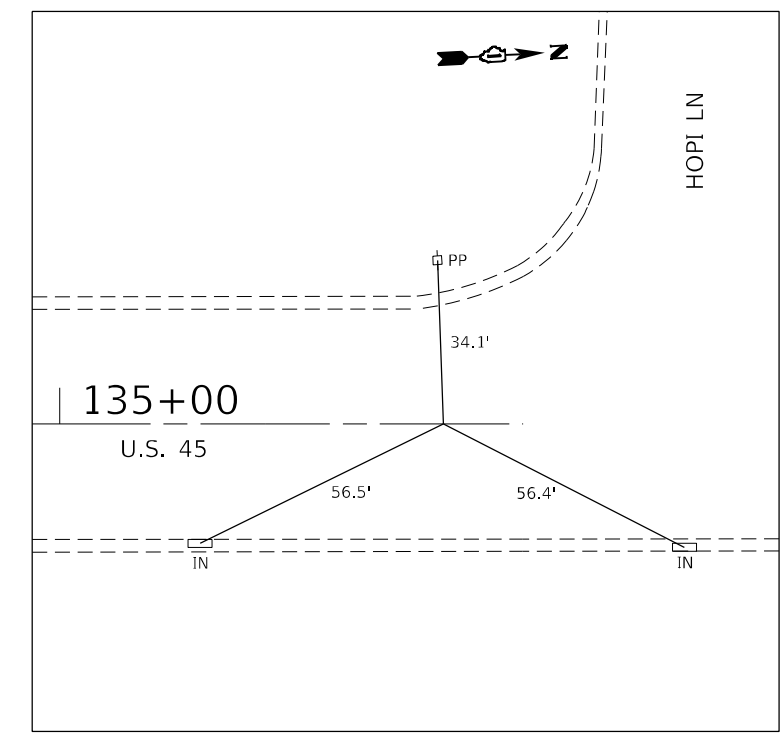
F.A.P. RTE.	SECTION	COUNTY	TOTAL SHEETS	SHEET NO.
330	FAP 0330 22 BJ3	COOK	23	3
CONTRACT NO. 62T05			ILLINOIS FED. AID PROJECT	



COORDINATE DATA - EXISTING U.S. 45			
STATION	ELEMENT	NORTHING	EASTING
101+75.00	POT	1,969,594.01	1,103,620.67
104+45.73	PI	1,969,862.97	1,103,651.55
106+66.01	PI	1,970,081.78	1,103,676.96
112+97.50	PI	1,970,709.25	1,103,748.08
115+02.23	PI	1,970,912.63	1,103,771.50
118+55.96	PI	1,971,264.16	1,103,810.98
120+15.25	PI	1,971,422.51	1,103,828.24
122+65.52	PI	1,971,671.93	1,103,848.78
124+20.95	PI	1,971,827.10	1,103,857.92
126+18.46	PI	1,972,024.46	1,103,865.33
129+87.22	PI	1,972,393.23	1,103,866.23
131+62.26	PI	1,972,568.26	1,103,867.25
134+68.08	PI	1,972,873.93	1,103,877.14
135+96.43	POT	1,973,002.08	1,103,884.15



ALIGNMENT TIE #1
 U.S. 45 STA. 101+75.00
 N: 1,969,594.01
 E: 1,103,620.67



ALIGNMENT TIE #2
 U.S. 45 STA. 135+78.00
 N: 1,972,983.36
 E: 1,103,883.13

MODEL: Sheet_Pkx
 FILE NAME: \\0195-002_EFK_Mean_US45_Overby\CAD_Sheets\Sheet_Alignment_Tie.dgn



USER NAME = WTeng	DESIGNED - WT	REVISED -
	DRAWN -	REVISED -
PLOT SCALE = 200,0000' / in.	CHECKED - JPO	REVISED -
PLOT DATE = 4/17/2023	DATE - 04/14/2023	REVISED -

STATE OF ILLINOIS
DEPARTMENT OF TRANSPORTATION

U.S. 45 OVER MCDONALD CREEK
ALIGNMENT AND TIES

SCALE: 1" = 100' SHEET 1 OF 1 SHEETS STA. TO STA.

F.A.P. RTE.	SECTION	COUNTY	TOTAL SHEETS	SHEET NO.
330	FAP 0330 22 BJ3	COOK	23	5
CONTRACT NO. 62T05				

ILLINOIS FED. AID PROJECT

MAINTENANCE OF TRAFFIC GENERAL NOTES

- CHANGEABLE MESSAGE SIGNS SHALL BE INSTALLED TWO WEEKS PRIOR TO ALL TRAFFIC STAGE CHANGES ON EACH APPROACH OF THE AFFECTED ROADWAY TO WARN MOTORISTS OF THE UPCOMING EVENTS. THE SIGN MESSAGES SHALL BE REVISED TWO WEEKS THEREAFTER WITH MESSAGES WARNING TRAFFIC OF POTENTIAL TRAFFIC DELAYS, QUEUING AND/OR WITH MESSAGES NOTIFYING TRAFFIC TO USE ALTERNATE ROUTES. THE SIGN LOCATIONS AND MESSAGES SHALL BE DETERMINED BY THE ENGINEER.
- THE CONTRACTOR SHALL CONTACT THE DISTRICT ONE TRAFFIC CONTROL SUPERVISOR AT KALPANA.KANNAN-HOSADURGA@ILLINOIS.GOV A MINIMUM OF 72 HOURS IN ADVANCE OF BEGINNING ANY WORK.
- NO WORK SHALL COMMENCE UNTIL TRAFFIC CONTROL REQUIREMENTS ARE MET.
- BEFORE BEGINNING ANY WORK, THE CONTRACTOR SHALL RETAIN AND RECORD FOR FUTURE REFERENCE ALL EXISTING PAVEMENT MARKING LINES (AND RAISED REFLECTIVE PAVEMENT MARKERS) IN ORDER THAT THESE LOCATIONS CAN BE RE-ESTABLISHED FOR STRIPING AT THE COMPLETION OF THIS CONTRACT. EXACT LOCATIONS OF ALL PAVEMENT MARKINGS SHALL BE AS SHOWN ON THE PLANS OR AS DIRECTED BY THE ENGINEER.
- RAISED REFLECTIVE PAVEMENT MARKER REMOVAL ON U.S. 45 SHALL INCLUDE ONLY THE REMOVAL OF THE REFLECTIVE ELEMENTS, EXCEPT AT BRIDGE S.N. 016-2418 WHERE THE REFLECTIVE ELEMENTS AND BASE CASTINGS SHALL BOTH BE REMOVED PRIOR TO SCARIFICATION, PER ARTICLE 783.03(b).
- THE CONTRACTOR WILL GIVE THE ENGINEER AT LEAST 10 DAYS NOTICE PRIOR TO ANY TRAFFIC STAGING CHANGES.
- ARROW BOARDS SHALL HAVE SOLAR POWER CAPABILITY.
- THE CONTRACTOR SHALL PROVIDE AT LEAST 48 HOURS PRIOR NOTICE TO THE RESIDENT ENGINEER, LOCAL EMERGENCY SERVICES, SCHOOLS, AND POST OFFICE PRIOR TO IMPLEMENTING LANE CLOSURES OR MAJOR TRAFFIC CONTROL CHANGES.
- ADVANCE WIDTH RESTRICTION SIGNS SHALL REMAIN IN PLACE UNTIL THE COMPLETION OF M.O.T. STAGE 2.

GENERAL SEQUENCE OF CONSTRUCTION

STAGE 1

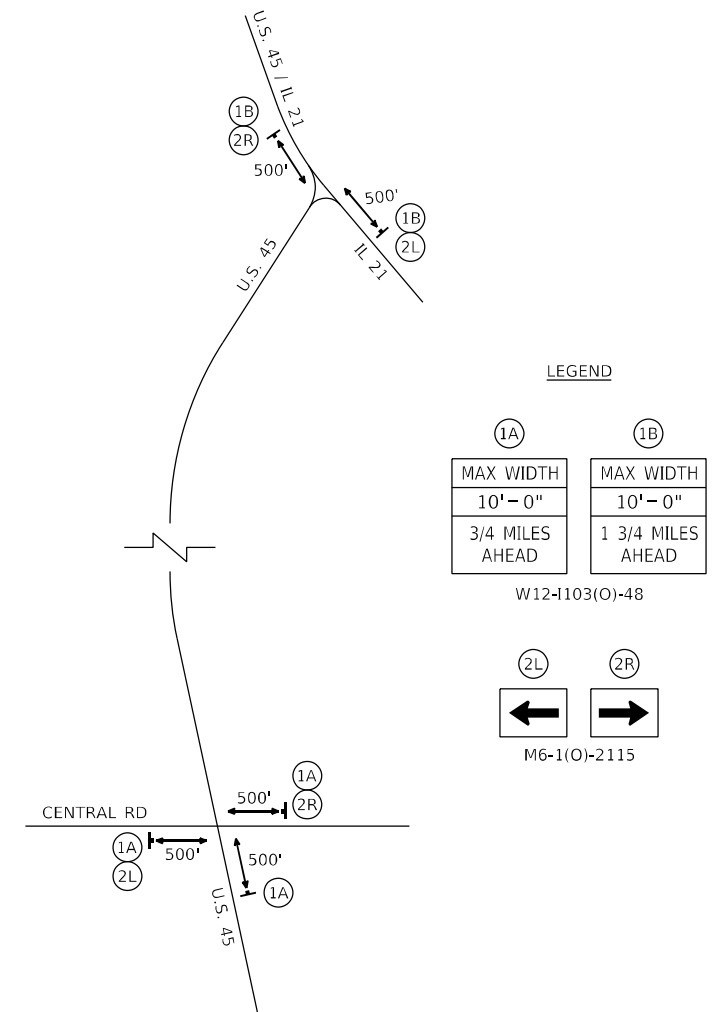
SHIFT TRAFFIC TO WEST HALF OF U.S. 45 AS SHOWN IN STAGE 1 PLANS TO MAINTAIN ONE LANE OF TRAFFIC IN EACH DIRECTION. PERFORM DECK SCARIFICATION AND OVERLAY ON EAST HALF OF BRIDGE S.N. 016-2418.

STAGE 2

SHIFT TRAFFIC TO EAST HALF OF U.S. 45 AS SHOWN IN STAGE 2 PLANS TO MAINTAIN ONE LANE OF TRAFFIC IN EACH DIRECTION. PERFORM DECK SCARIFICATION AND OVERLAY ON WEST HALF OF BRIDGE S.N. 016-2418.

ADVANCE WIDTH RESTRICTION SIGNING MAP

NOT TO SCALE



MODEL Path: H:\FILE NAME: W12-1103(O)-48_Mean_US45_Overby\CAD_Sheets\Sheet_MOT_Notes.dgn



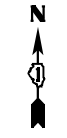
USER NAME = WTeng	DESIGNED - WT	REVISED -
DRAWN -	REVISED -	
PLOT SCALE = 20,0000 * / in.	CHECKED - JPO	REVISED -
PLOT DATE = 4/17/2023	DATE - 04/14/2023	REVISED -

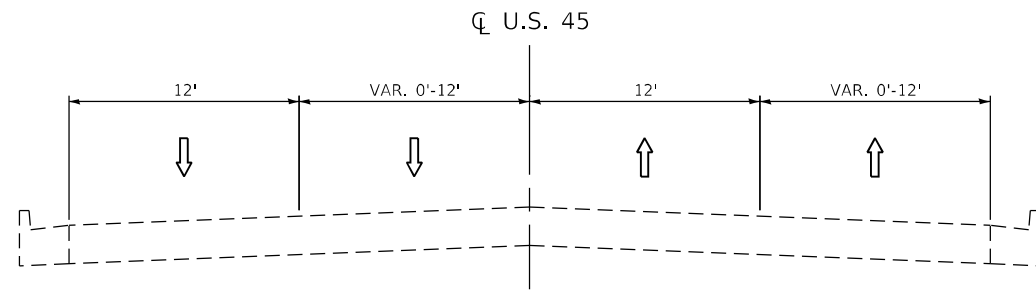
STATE OF ILLINOIS
DEPARTMENT OF TRANSPORTATION

U.S. 45 OVER MCDONALD CREEK
MAINTENANCE OF TRAFFIC GENERAL NOTES & SEQUENCING

SCALE: N.T.S. SHEET 1 OF 4 SHEETS STA. N/A TO STA. N/A

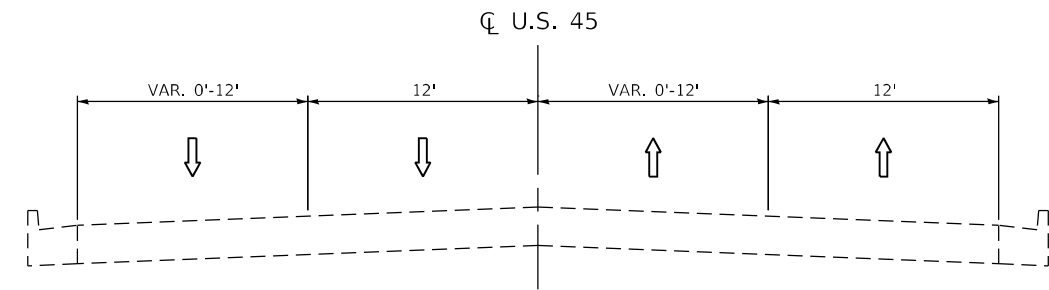
F.A.P. RTE. 330	SECTION FAP 0330 22 BJ3	COUNTY COOK	TOTAL SHEETS 23	SHEET NO. 6
ILLINOIS			FED. AID PROJECT	





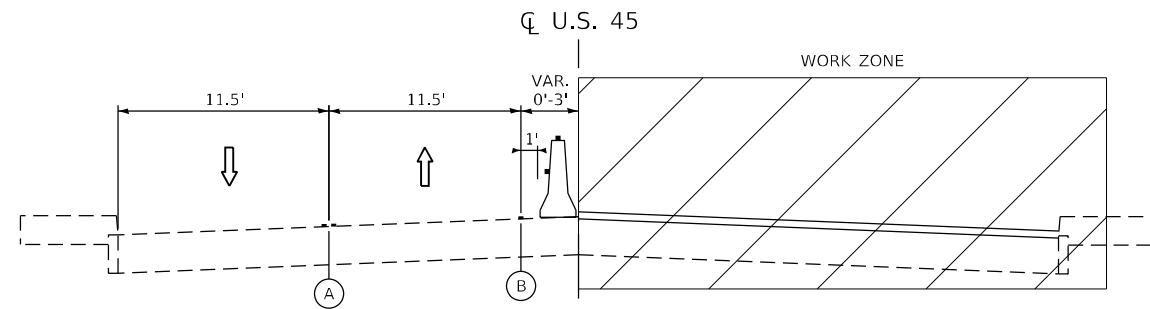
U.S. 45 – STAGE 1

STA 109+39 TO 116+51



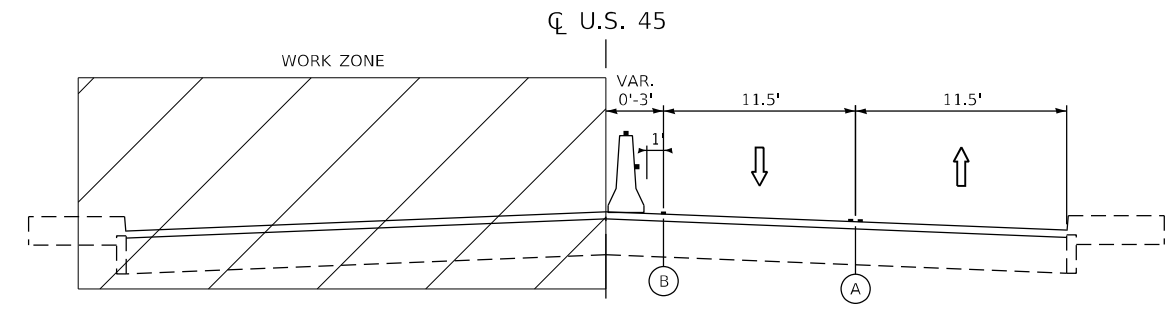
U.S. 45 – STAGE 2

STA 107+19 TO 115+51



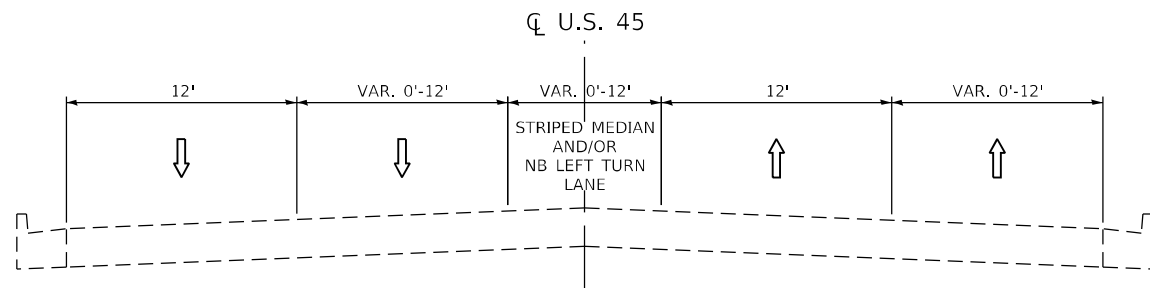
U.S. 45 – STAGE 1

STA 116+51 TO 119+01



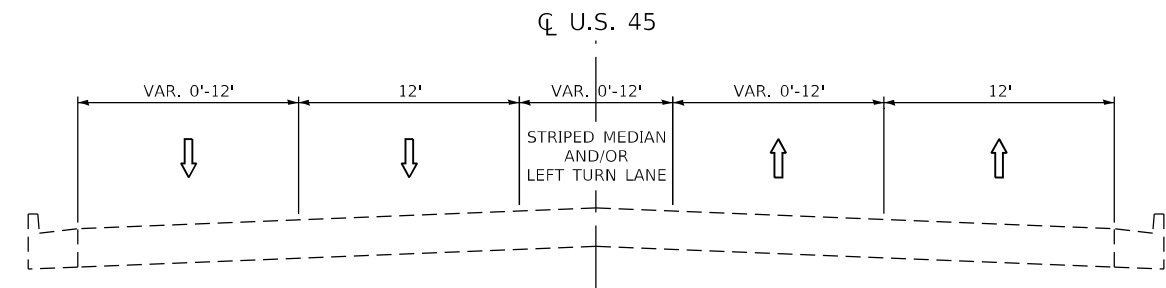
U.S. 45 – STAGE 2

STA 116+51 TO 119+01



U.S. 45 – STAGE 1


STA 119+01 TO 123+22



U.S. 45 – STAGE 2


STA 119+01 TO 125+21

LEGEND

 * TEMP. CONC. BARRIER W/ TY. C BI-DIRECTIONAL CRYSTAL REFLECTORS (PER STDS. 704001 & 782006)

 WORK ZONE

 4" DOUBLE YELLOW @ 11" C-C TYPE IV TAPE

 4" SOLID WHITE TYPE IV TAPE

* TYPE C REFLECTORS SHALL BE CONSIDERED INCLUDED IN THE COST OF TEMP. CONC. BARRIER.

MODEL: D:\p\bl\195-002_EFK_Mean_US45_Overby\CAD_Sheets\Sheet_MOT_Typical.dgn



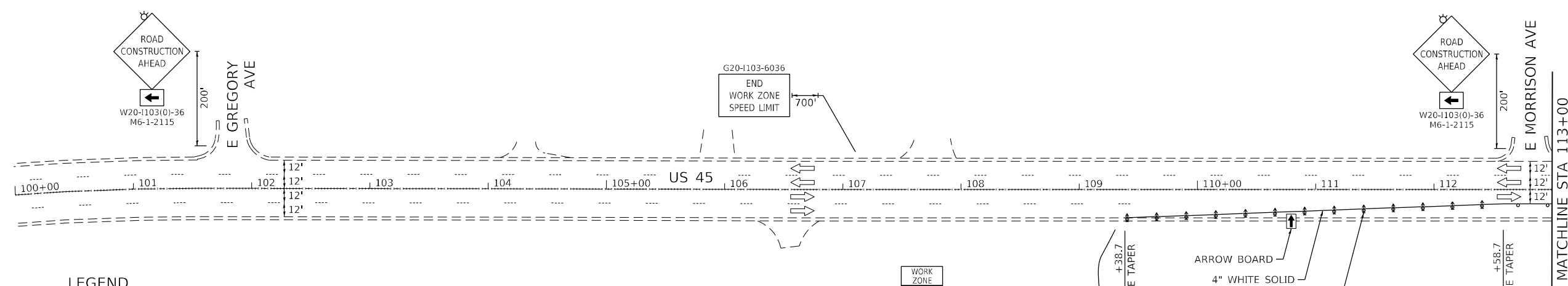
USER NAME = WTeng	DESIGNED - WT	REVISED -
DRAWN -	REVISOR -	REVISOR -
PLOT SCALE = 20,0000 * / in.	CHECKED - JPO	REVISOR -
PLOT DATE = 4/17/2023	DATE - 04/14/2023	REVISOR -

**STATE OF ILLINOIS
DEPARTMENT OF TRANSPORTATION**

**U.S. 45 OVER MCDONALD CREEK
MAINTENANCE OF TRAFFIC TYPICAL SECTIONS**

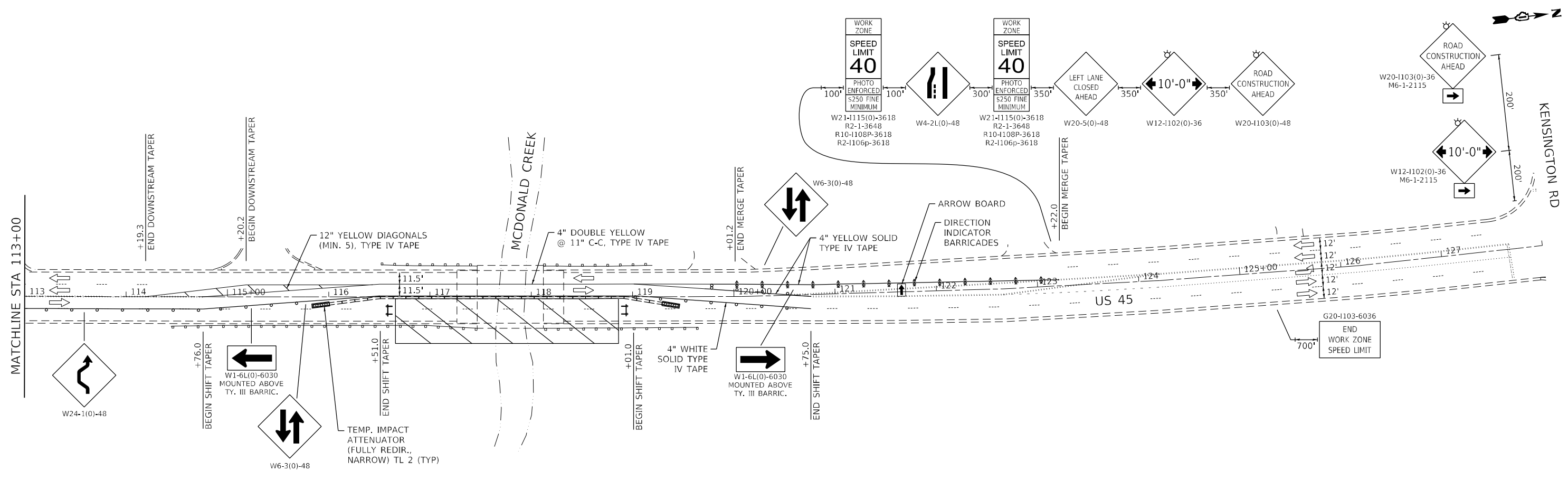
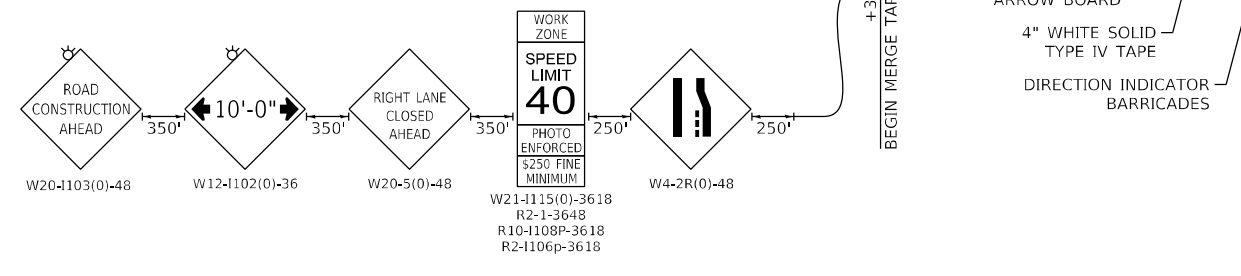
SCALE: SHEET 2 OF 4 SHEETS STA. TO STA.

F.A.P. RTE.	SECTION	COUNTY	TOTAL SHEETS	SHEET NO.
330	FAP 0330 22 BJ3	COOK	23	7
CONTRACT NO. 62T05				
ILLINOIS FED. AID PROJECT				



LEGEND

	DRUMS OR BARRICADE TY. II (50' C-C ON TANGENTS, 25' C-C ON TAPERS & CURVES, AND 10' C-C ON RADII)		WORK ZONE
	DIRECTION INDICATOR BARRICADE W/ STEADY-BURN LIGHT, 50' C-C OR UNLESS OTHERWISE NOTED		BARRICADE TYPE III W/ FLASHING LIGHTS
	DIRECTION OF TRAFFIC		ARROW BOARD



MODEL: Sheet: Stage 1
 FILE NAME: W:\95-602_EFK_Mean_US45_Overby\CAD_Sheets\Sheet_MOT.dgn



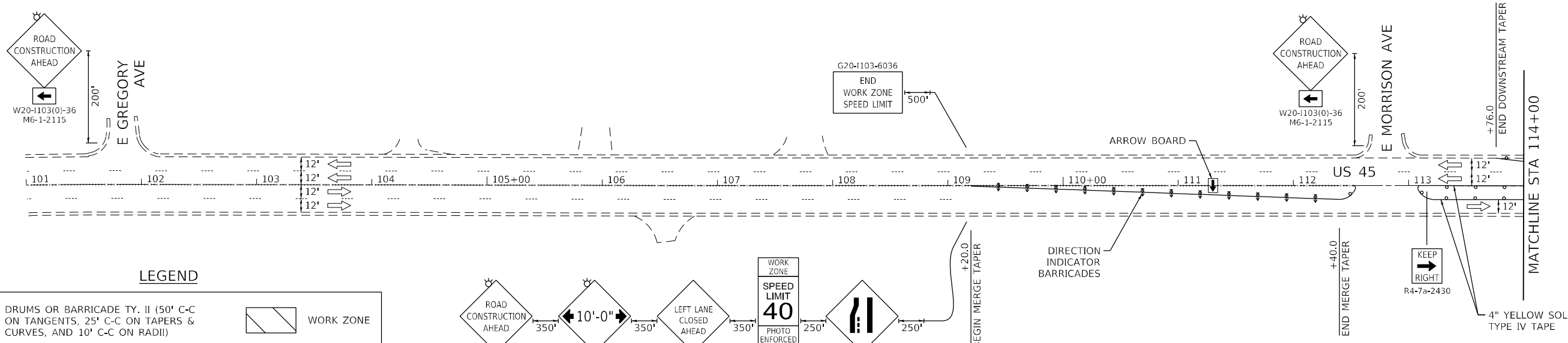
USER NAME = WTeng	DESIGNED - WT	REVISED -
PLOT SCALE = 100,0000' / in.	DRAWN -	REVISED -
PLOT DATE = 4/17/2023	CHECKED - JPO	REVISED -
	DATE - 04/14/2023	REVISED -

**STATE OF ILLINOIS
 DEPARTMENT OF TRANSPORTATION**

**U.S. 45 OVER MCDONALD CREEK
 MAINTENANCE OF TRAFFIC - STAGE 1**

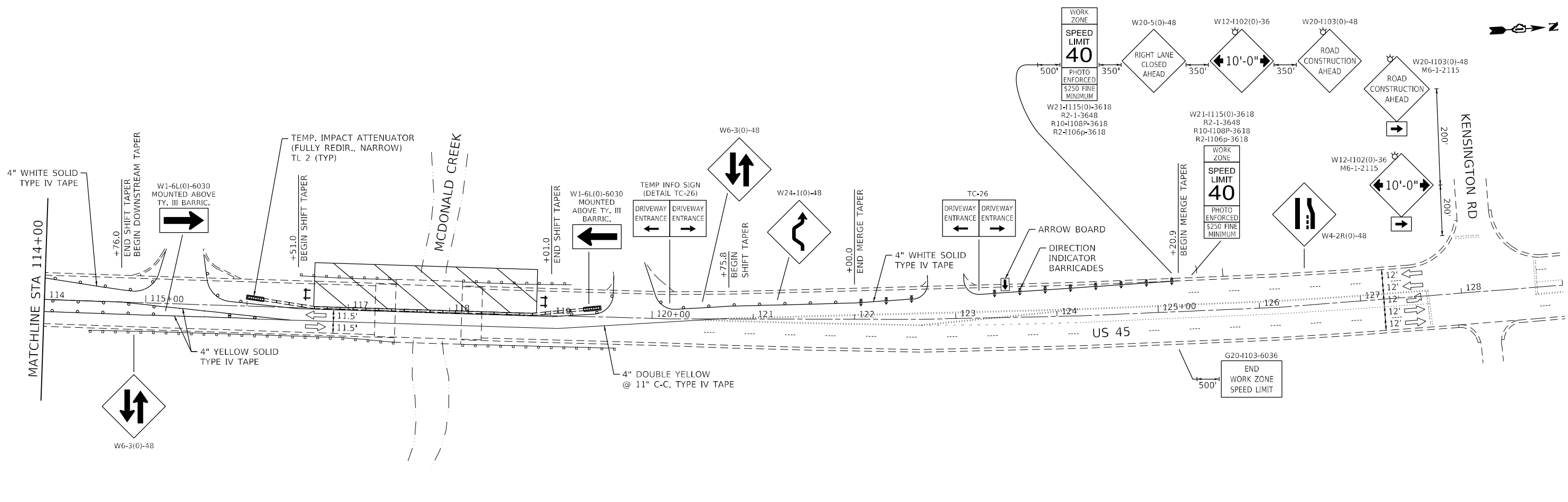
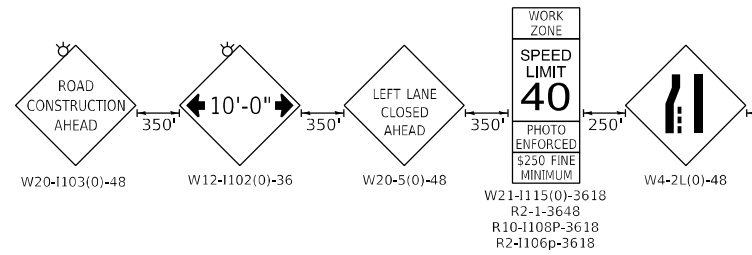
SCALE: 1" = 50' SHEET 3 OF 4 SHEETS STA. TO STA.

F.A.P. RTE. 330	SECTION FAP 0330 22 BJ3	COUNTY COOK	TOTAL SHEETS 23	SHEET NO. 8
CONTRACT NO. 62T05				
ILLINOIS FED. AID PROJECT				



LEGEND

	DRUMS OR BARRICADE TY. II (50' C-C ON TANGENTS, 25' C-C ON TAPERS & CURVES, AND 10' C-C ON RADII)		WORK ZONE
	DIRECTION INDICATOR BARRICADE W/ STEADY-BURN LIGHT, 50' C-C OR UNLESS OTHERWISE NOTED		BARRICADE TYPE III W/ FLASHING LIGHTS
	DIRECTION OF TRAFFIC		ARROW BOARD



MODEL: Sheet_Stage_2
 FILE NAME: W:\195602_EFK_Mean_US45_Overby\CAD_Sheets\Sheet_MOT.dgn

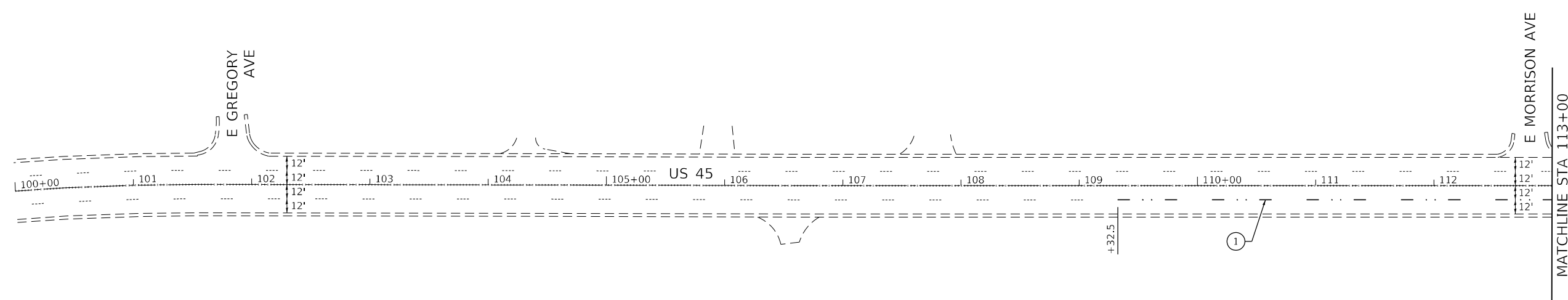


USER NAME = WTeng	DESIGNED - WT	REVISED -
PLOT SCALE = 100,0000' / in.	DRAWN -	REVISED -
PLOT DATE = 4/17/2023	CHECKED - JPO	REVISED -
	DATE - 04/14/2023	REVISED -

STATE OF ILLINOIS
DEPARTMENT OF TRANSPORTATION

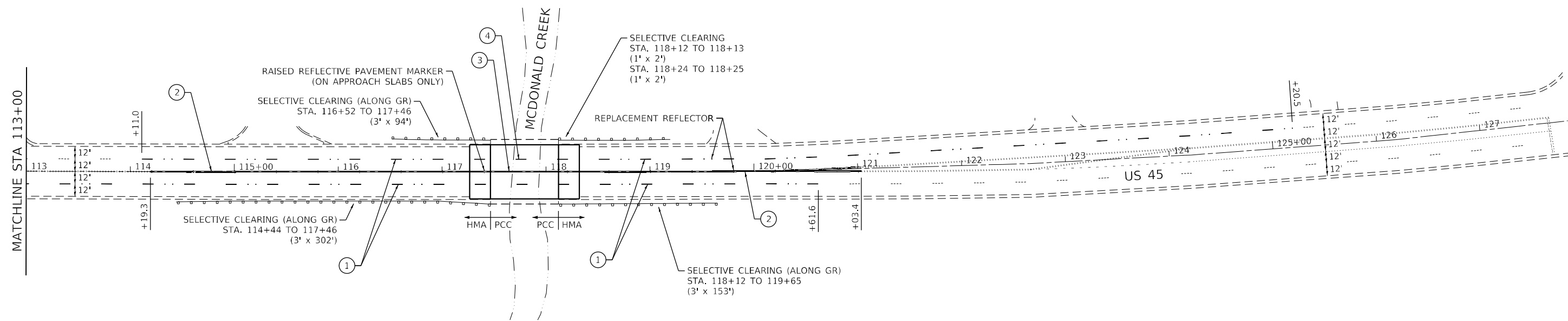
U.S. 45 OVER MCDONALD CREEK MAINTENANCE OF TRAFFIC - STAGE 2		
SCALE: 1" = 50'	SHEET 4 OF 4 SHEETS	STA. TO STA.

F.A.P. RTE. 330	SECTION FAP 0330 22 BJ3	COUNTY COOK	TOTAL SHEETS 23	SHEET NO. 9
CONTRACT NO. 62T05				
ILLINOIS FED. AID PROJECT				



PAVEMENT MARKING LEGEND

- ① THERMOPLASTIC - LINE 4" WHITE (10' DASH, 30' SKIP)
- ② THERMOPLASTIC - LINE TWO-4" YELLOW (11" C-C)
- ③ MODIFIED URETHANE - LINE TWO-4" YELLOW (11" C-C)
- ④ PREFORMED PLASTIC, TY. B - LINE 7" CONTRAST (10' DASH, 30' SKIP)



NOTE:

PAVEMENT MARKING MATERIAL SHALL BE THERMOPLASTIC FOR ASPHALT SURFACES AND MODIFIED URETHANE OR PREFORMED PLASTIC FOR P.C. CONCRETE SURFACES AS INDICATED ON THE PLANS.

MODEL: Sheet_Plan; FILE NAME: \\0195-002_EFK_Mean_US45_Overby\CAD_Sheets\Sheet_Plan_Marking_Landscaping.dgn



USER NAME = WTeng	DESIGNED - WT	REVISED -
PLOT SCALE = 100,0000' / in.	DRAWN -	REVISED -
PLOT DATE = 4/17/2023	CHECKED - JPO	REVISED -
	DATE - 04/14/2023	REVISED -

**STATE OF ILLINOIS
DEPARTMENT OF TRANSPORTATION**

**U.S. 45 OVER MCDONALD CREEK
PAVEMENT MARKING AND LANDSCAPING PLANS**

SCALE: 1" = 50' SHEET 1 OF 1 SHEETS STA. TO STA.

F.A.P. RTE.	SECTION	COUNTY	TOTAL SHEETS	SHEET NO.
330	FAP 0330 22 BJ3	COOK	23	10
ILLINOIS FED. AID PROJECT			CONTRACT NO. 62T05	

Existing Structure: S.N 016-2418 was built in 1984 as a slab bridge. The structure has a back-to-back abutment length of 66'-6" and the width is 64'-0" out to out deck. The superstructure consists of a 1'-2" thick reinforced concrete slab.

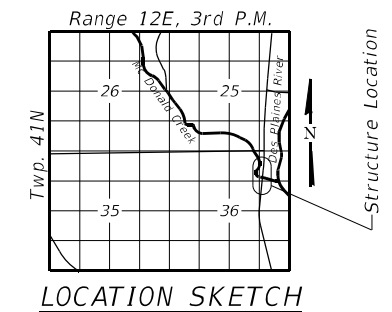
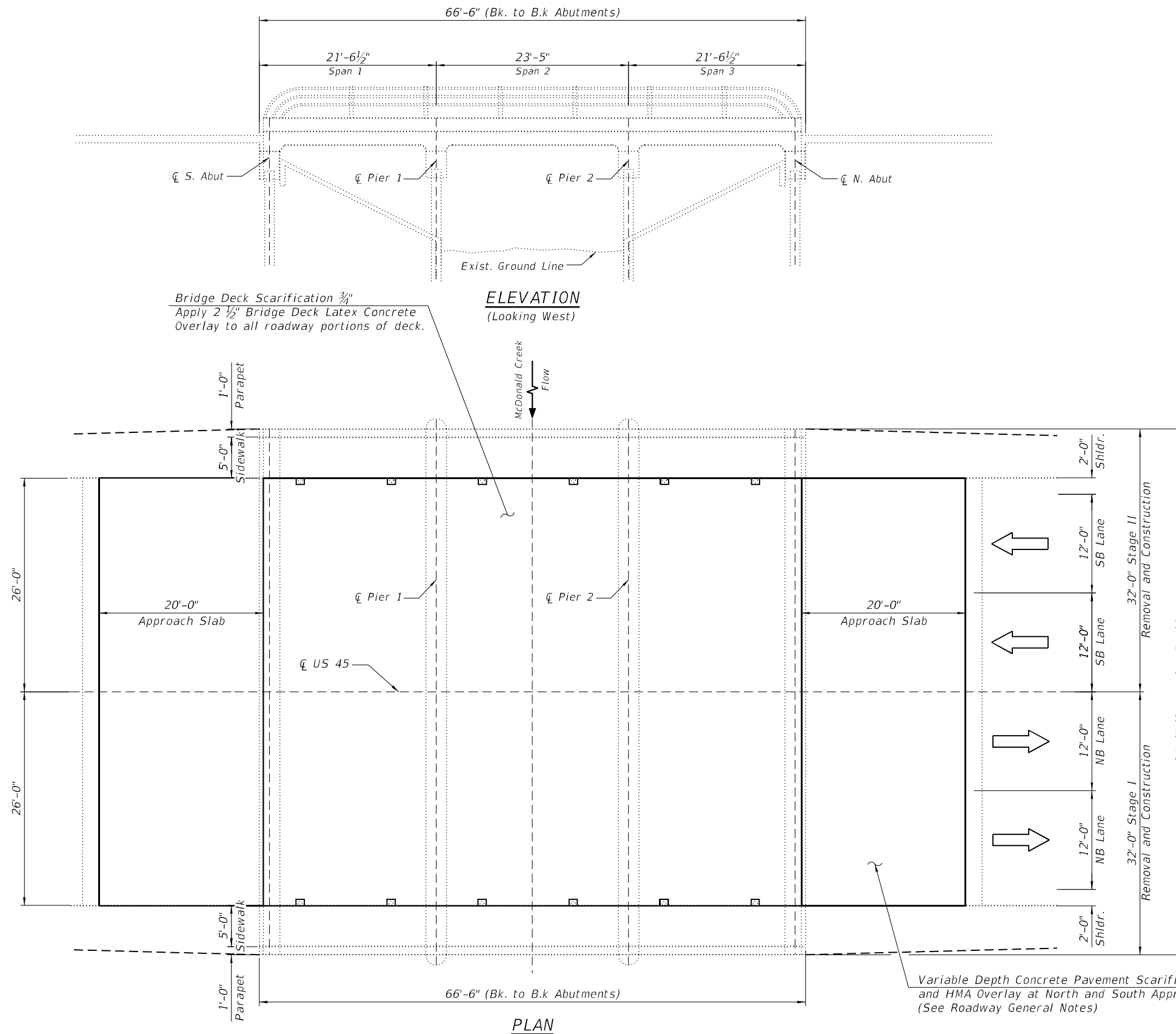
Traffic to be maintained utilizing stage construction.

LOADING HS20-44

Original Construction
Allow 25 psf for FWS

DESIGN SPECIFICATIONS

1977 AASHTO Standard Specifications for Highway, Bridges & Interim Specifications for 1980 (New Construction)
2002 AASHTO Standard Specifications for Highway Bridges, 17th Edition



John A. De...
DATE SIGNED: 1-16-2023
EXP. DATE: 11-30-2024

GENERAL PLAN & ELEVATION

**U.S. RT. 45 OVER
MCDONALD CREEK
F.A.P. ROUTE 330
SEC. 0330 022 BJ3
COOK COUNTY
STATION 256+46.50
S.N 016-2418**

FILE NAME: W:\195-002_EFK\Main\US45_Overlay\CAD_Sheets\Structural\0122022_US45_Overlay_SHT-01_General_Plan & Elevation.dgn

	USER NAME = esocelo	DESIGNED - ES	REVISED -	STATE OF ILLINOIS DEPARTMENT OF TRANSPORTATION	STRUCTURE NO. 016-2418	F.A.P. RTE. = 330	SECTION = 0330 022 BJ3	COUNTY = COOK	TOTAL SHEETS = 23	SHEET NO. = 11	
	PLOT SCALE =	DRAWN - ES	REVISED -			CONTRACT NO. 62T05					
	PLOT DATE = 6/19/2023	CHECKED - KN	REVISED -			ILLINOIS FED. AID PROJECT					
	SHEET NO. 1 OF 7 SHEETS										

GENERAL NOTES

1. Plan dimensions and details relative to existing plans are subject to nominal construction variations. The Contractor shall field verify existing dimensions and details affecting new construction and make necessary approved adjustments prior to construction or ordering of materials. Such variations shall not be cause for additional compensation for a change in scope of the work; however, the Contractor will be paid for the quantity actually furnished based on the unit price bid for the work.
2. Areas of deck repairs are estimated. Actual type, location and dimensions are to be determined by the Engineer during construction and documented on as-built plans.
3. Existing Reinforcement bars extending into the removal area shall be cleaned, straightened and incorporated into the new construction. Any reinforcement bars that are damaged within concrete removal area shall be replaced with an approved bar splicer or anchorage system. Cost included with concrete removal.
4. See Special Provisions "Deck Slab Repair" for additional requirements pertaining to deck slab repair.

INDEX OF SHEETS

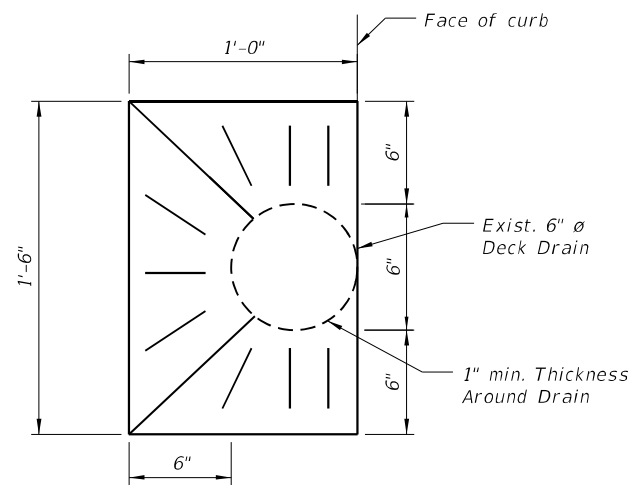
1. General Plan & Elevation
2. General Data
3. Stage Construction Details
4. Bridge Deck and Approach Slabs Overlay and Repairs
5. Parapet Repair Details
6. Pier 2 Repair Details
7. North Abutment Repair Details

TOTAL BILL OF MATERIAL

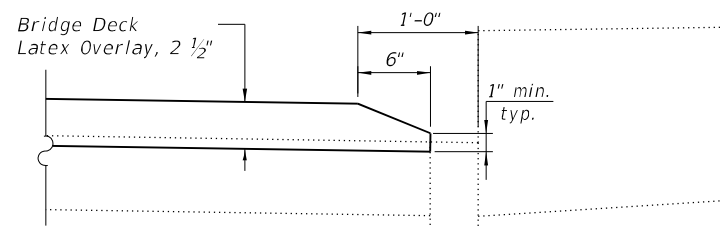
ITEM	UNIT	TOTAL
Bituminous Materials (Tack Coat)	Pound.	104
Bridge Deck Grooving	Sq. Yd.	364
Protective Coat	Sq. Yd.	486
Clean & Reseal Relief Joint	Foot	104
Approach Slab Repair (Full Depth)	Sq. Yd.	14
Approach Slab Repair (Partial Depth)	Sq. Yd.	18
Bridge Deck Latex Concrete Overlay, 2 1/2 Inches	Sq. Yd.	379
Bridge Deck Scarification 3/4"	Sq. Yd.	379
Structural Repair of Concrete (Depth Equal To or Less Than 5 Inches)	Sq. Ft.	142
Concrete Pavement Scarification	Sq. Yd.	232
Debris Removal	Cu. Yd.	10
Deck Slab Repair (Full Depth, Type II)	Sq. Yd.	21

SCOPE OF WORK

1. Scarify 3/4" from the bridge slab and variable depth from approach slabs.
2. Full and partial depth repairs to bridge slab and approach slabs.
3. Apply 2 1/2" Bridge Deck Latex Concrete Overlay on bridge slab and variable depth Hot-Mix Asphalt (HMA) Overlay on approach slabs.
4. Bridge Deck Grooving.
5. Apply Protective Coat to the top and inside faces of parapets, top and inside faces of sidewalks, and top of Latex Overlay.
6. Concrete Repair of West and East Parapet, North Abutment, and Pier 2.



DECK DRAIN TOP PLAN



SECTION AT DECK DRAIN

FILE NAME: W:\195-002_EFK_Mean_US45_Overlay\CAD_Sheets\Structural\01222022_US45_Overlay_SHT-02_General_Data.dgn



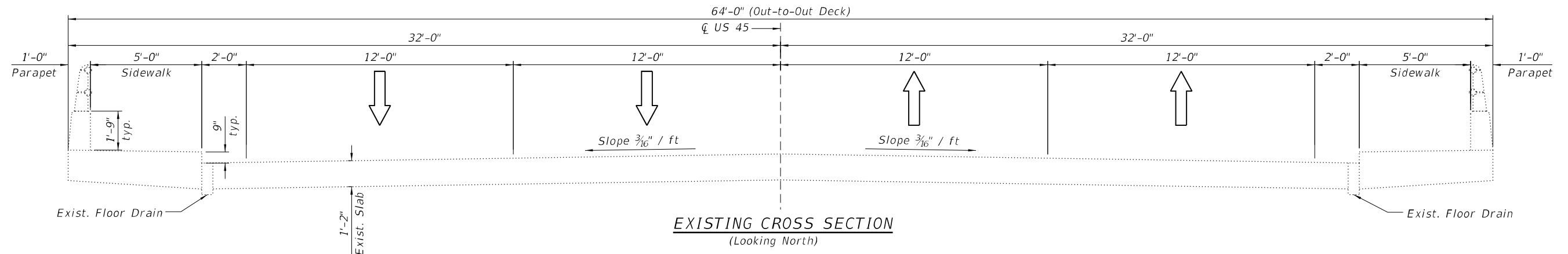
USER NAME = esocelo	DESIGNED - ES	REVISED -
	CHECKED - KN	REVISED -
PLOT SCALE =	DRAWN - ES	REVISED -
PLOT DATE = 6/19/2023	CHECKED - KN	REVISED -

**STATE OF ILLINOIS
DEPARTMENT OF TRANSPORTATION**

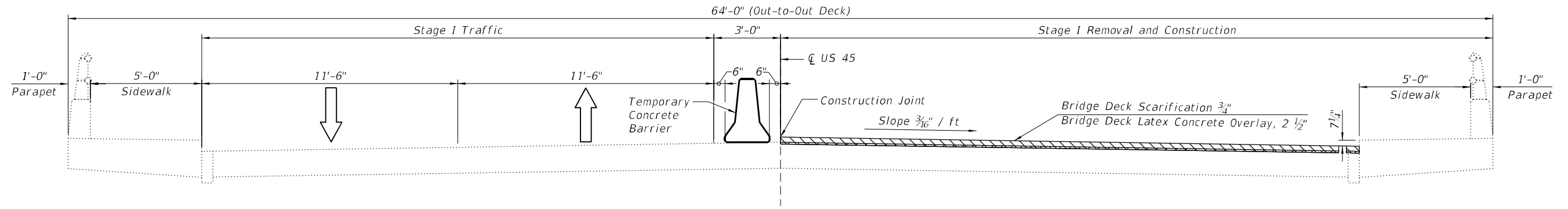
**GENERAL DATA
STRUCTURE NO. 016-2418**

SHEET NO. 2 OF 7 SHEETS

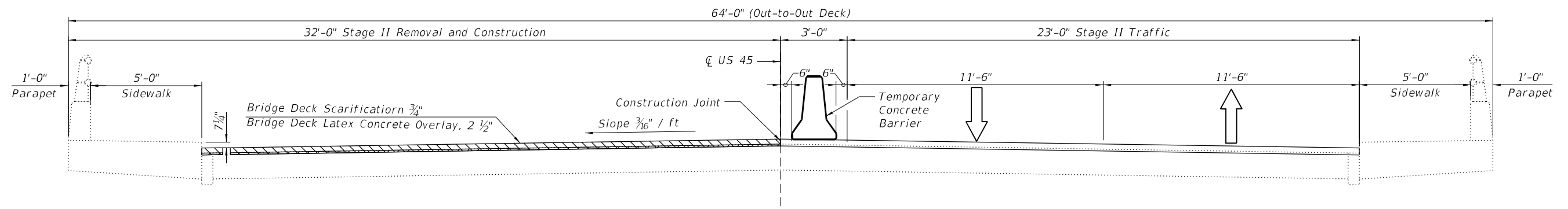
F.A.P. RTE.	SECTION	COUNTY	TOTAL SHEETS	SHEET NO.
330	0330 022 BJ3	COOK	23	12
CONTRACT NO. 62T05				
ILLINOIS		FED. AID PROJECT		



EXISTING CROSS SECTION
(Looking North)



STAGE I REMOVAL & CONSTRUCTION
(Looking North)



STAGE II REMOVAL & CONSTRUCTION
(Looking North)

LEGEND

- Bridge Deck Scarification $\frac{3}{4}$ "
- Bridge Deck Latex Concrete Overlay 2 $\frac{1}{2}$ "

BILL OF MATERIAL

ITEM	UNIT	QUANTITY
Bridge Deck Scarification $\frac{3}{4}$ "	Sq. Yd.	379
Bridge Deck Latex Concrete Overlay, 2 $\frac{1}{2}$ Inches	Sq. Yd.	379

FILE NAME: W:\195-002_EFK\Main\US45_Overlay\CAD_Sheets\Structural\0122022_US45_Overlay_SUIT_03_Stage_Construction_Deck_Sections.dgn



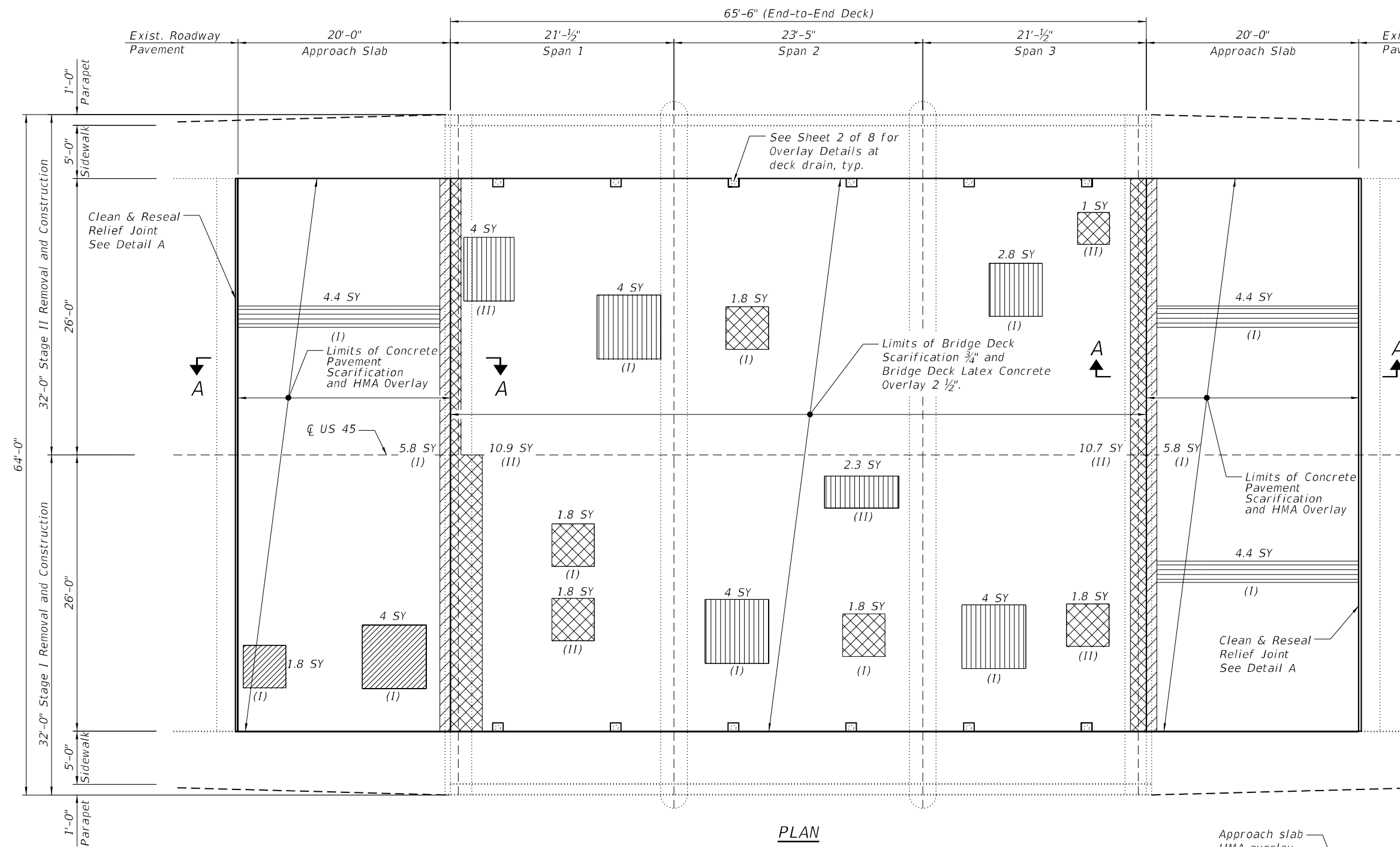
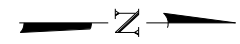
USER NAME = esocelo	DESIGNED - ES	REVISD -
	CHECKED - KN	REVISD -
PLOT SCALE =	DRAWN - ES	REVISD -
PLOT DATE = 6/19/2023	CHECKED - KN	REVISD -

STATE OF ILLINOIS
DEPARTMENT OF TRANSPORTATION

STAGE CONSTRUCTION DETAILS
STRUCTURE NO. 016-2418

SHEET NO. 3 OF 7 SHEETS

F.A.P. RTE.	SECTION	COUNTY	TOTAL SHEETS	SHEET NO.
330	0330 022 BJ3	COOK	23	13
CONTRACT NO. 62T05			ILLINOIS FED. AID PROJECT	



NOTES:

1. Areas of deck slab and approach slab repairs are estimated based on the District survey and are for information only. Actual type, location, and dimensions are to be determined by the Engineer during construction and documented on as-built plans.
2. Protective coat shall be applied to top and inside face of parapets, top and inside face of sidewalks and surface of the new overlay.
3. Construction of Deck Slab Repair (Full Depth and Partial Depth) shall be performed in sequence I and II in each stage. Sequence II removal areas shall not be started until new concrete in sequence I removal areas has reached a minimum of 650 psi modulus of rupture.
4. Bridge Deck Grooving shall be stopped 1 ft from the faces of sidewalks.
5. Scarify approach slabs prior to Approach Slab Repair.

DECK SLAB PATCHING SEQUENCE

(I) = Sequence I
(II) = Sequence II

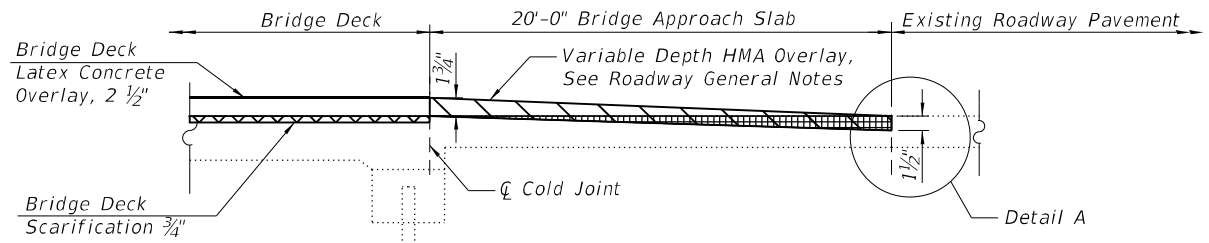
BILL OF MATERIAL

ITEM	UNIT	QUANTITY
Bridge Deck Grooving	Sq. Yd.	364
Protective Coat	Sq. Yd.	486
Approach Slab Repair (Partial Depth)	Sq. Yd.	18
Approach Slab Repair (Full Depth)	Sq. Yd.	14
Deck Slab Repair (Full Depth, Type II)	Sq. Yd.	21
Concrete Pavement Scarification	Sq. Yd.	232
Bituminous Materials (Tack Coat)	Pound.	104
Clean & Reseal Relief Joint	Foot	104

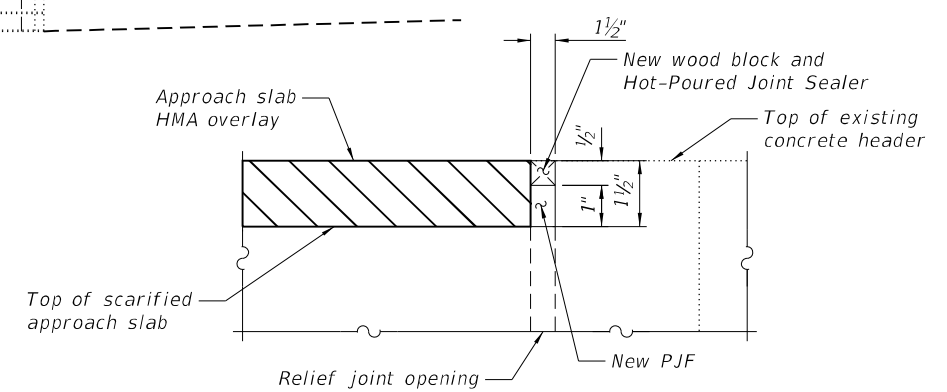
PLAN

LEGEND

- Approach Slab Repair (Partial Depth)
- Approach Slab Repair (Full Depth, Type II)
- Deck Slab Repair (Partial Depth)
- Deck Slab Repair (Full Depth, Type II)
- Hot-Mix Asphalt Overlay Variable Depth 1 3/4" to 1 1/2", See Section A-A
- Concrete Pavement Scarification, Variable Depth up to 1 1/2", See Section A-A



SECTION A-A



DETAIL A

1. Scarify approach slab and relief joint.
2. Place P.J.F. and wood block in joint.
3. Place HMA overlay.
4. After HMA overlay has cooled, remove wood block and place Hot-Poured Joint Sealer.

FILE NAME: W:\195-002_EFK_Mean_US45_Overlay\CAD_Sheets\Structural\0122022_US45_Overlay_SHT-04_Bridge Deck and Approach Slabs_Repair.dgn



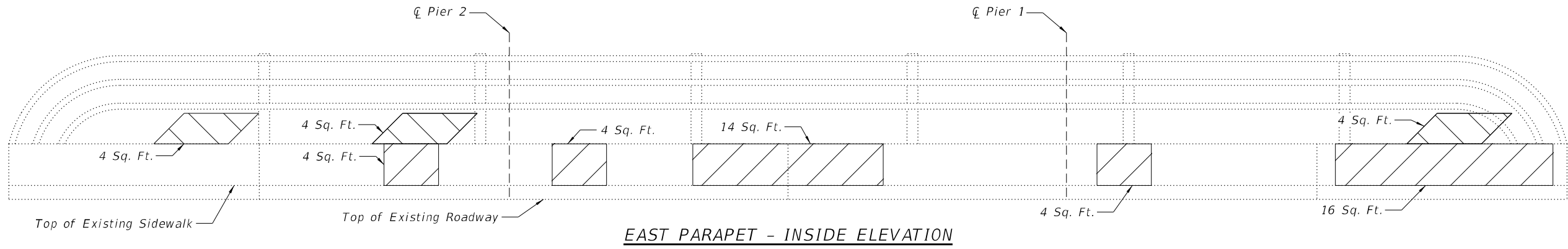
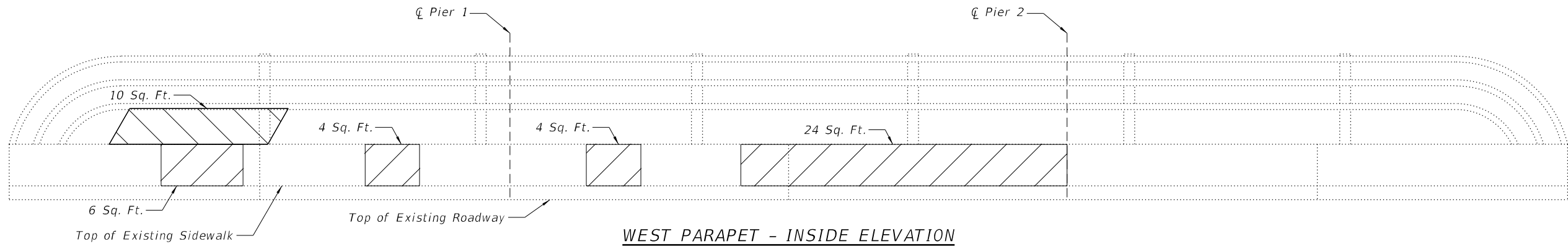
USER NAME = esocelo	DESIGNED - ES	REVISIONS
PLOT SCALE =	CHECKED - KN	REVISIONS
PLOT DATE = 6/19/2023	DRAWN - ES	REVISIONS
	CHECKED - KN	REVISIONS

**STATE OF ILLINOIS
DEPARTMENT OF TRANSPORTATION**

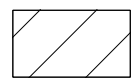
**BRIDGE DECK AND APPROACH SLABS OVERLAY AND REPAIRS
STRUCTURE NO. 016-2418**

SHEET NO. 4 OF 7 SHEETS

F.A.P. RTE. 330	SECTION 0330 022 B13	COUNTY COOK	TOTAL SHEETS 23	SHEET NO. 14
CONTRACT NO. 62T05			ILLINOIS FED. AID PROJECT	



LEGEND



Structural Repair of Concrete - Traffic Face
(Depth Equal to or Less Than 5 Inches)



Structural Repair of Concrete - Back Face
(Depth Equal to or Less Than 5 Inches)

BILL OF MATERIAL

ITEM	UNIT	QUANTITY
Structural Repair of Concrete (Depth Equal To or Less Than 5 Inches)	Sq. Ft.	102

FILE NAME: W:\195-002_EFK\Main\US45_Overlay\CAD_Sheet\Structural\0122022_US45_Overlay_SHT-05_Parapet_Elevation.dgn



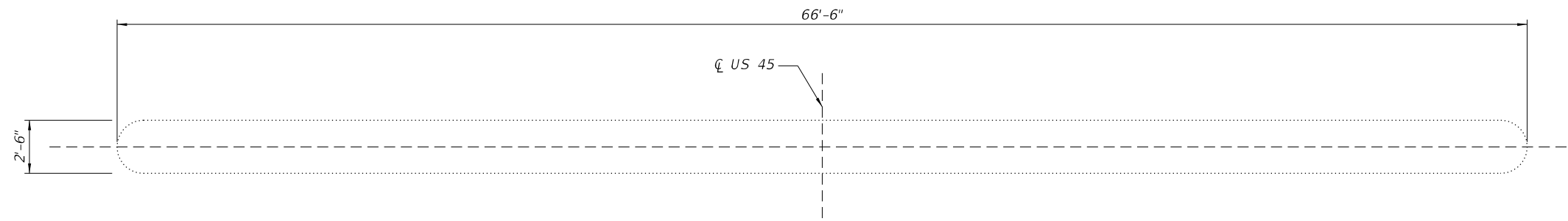
USER NAME = esocelo	DESIGNED - ES	REVISED -
	CHECKED - KN	REVISED -
PLOT SCALE =	DRAWN - ES	REVISED -
PLOT DATE = 4/12/2023	CHECKED - KN	REVISED -

**STATE OF ILLINOIS
DEPARTMENT OF TRANSPORTATION**

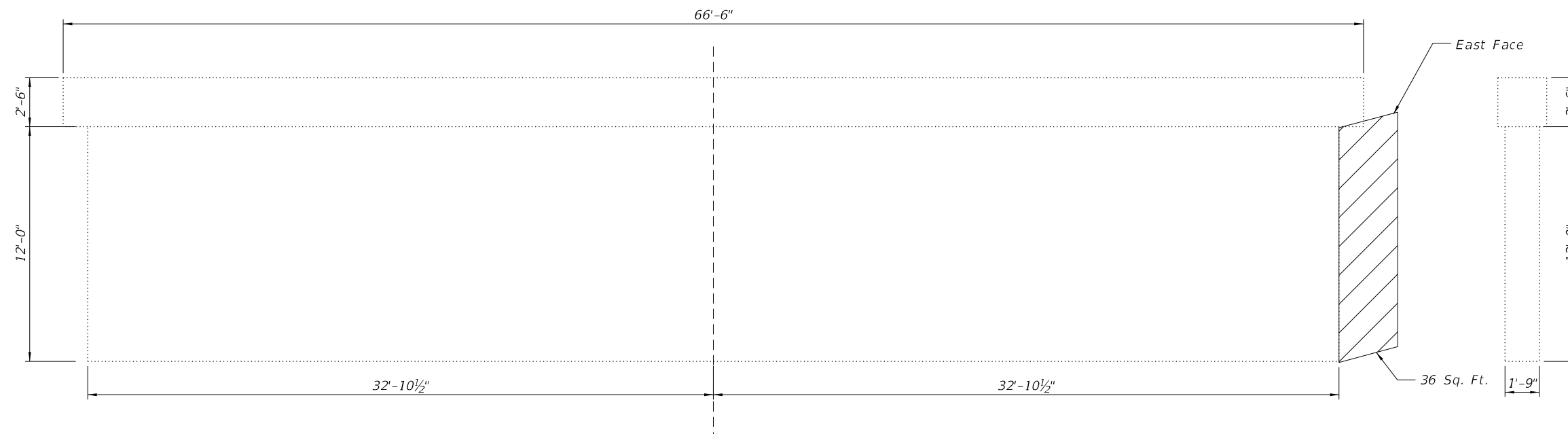
**PARAPET REPAIR DETAILS
STRUCTURE NO. 016-2418**

SHEET NO. 5 OF 7 SHEETS

F.A.P. RTE.	SECTION	COUNTY	TOTAL SHEETS	SHEET NO.
330	0330 022 BJ3	COOK	23	15
ILLINOIS FED. AID PROJECT			CONTRACT NO. 62T05	



PIER 2 - PLAN



PIER 2 - ELEVATION
(Looking North)

LEGEND



Structural Repair of Concrete
(Depth Equal to or Less Than 5 Inches)

BILL OF MATERIAL

ITEM	UNIT	QUANTITY
Structural Repair of Concrete (Depth Equal To or Less Than 5 Inches)	Sq. Ft.	36

FILE NAME: W:\195-002_EFK_Mean_US45_Overby\CAD_Sheets\Structural\195-002_US45_Overby_SHT-06_Pier 2 Repairs.dgn



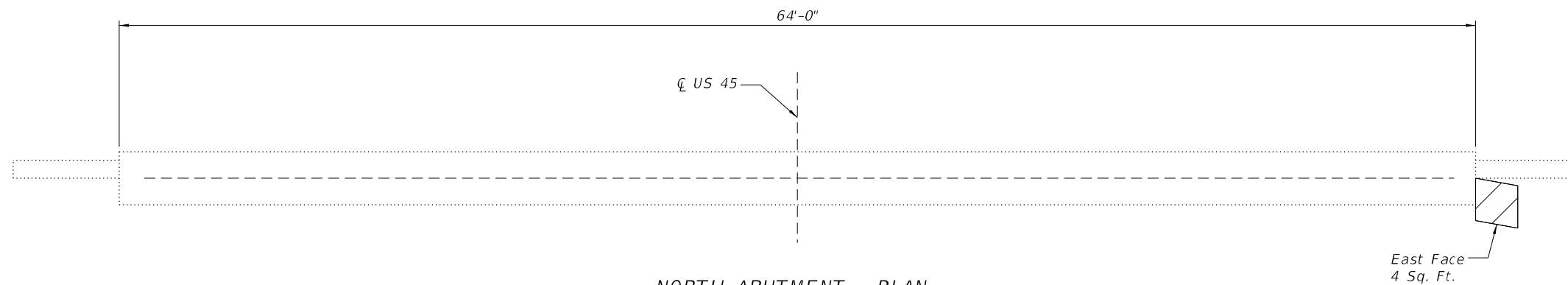
USER NAME = esocelo	DESIGNED - ES	REVISED -
	CHECKED - KN	REVISED -
PLOT SCALE =	DRAWN - ES	REVISED -
PLOT DATE = 4/12/2023	CHECKED - KN	REVISED -

**STATE OF ILLINOIS
DEPARTMENT OF TRANSPORTATION**

**PIER 2 REPAIR DETAILS
STRUCTURE NO. 016-2418**

SHEET NO. 6 OF 7 SHEETS

F.A.P. RTE.	SECTION	COUNTY	TOTAL SHEETS	SHEET NO.
330	0330 022 BJ3	COOK	23	16
ILLINOIS FED. AID PROJECT			CONTRACT NO. 62T05	

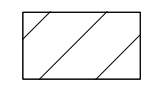


NORTH ABUTMENT - PLAN

BILL OF MATERIAL

ITEM	UNIT	QUANTITY
Structural Repair of Concrete (Depth Equal To or Less Than 5 Inches)	Sq. Ft.	4

LEGEND



Structural Repair of Concrete
(Depth Equal to or Less Than 5 Inches)

FILE NAME: W:\195-002_EFK\Main\US45_Overby\CAD_Sheets\Structural\0122022_US45_Overby_SUIT-01_North_Abutment_Repairs.dwg



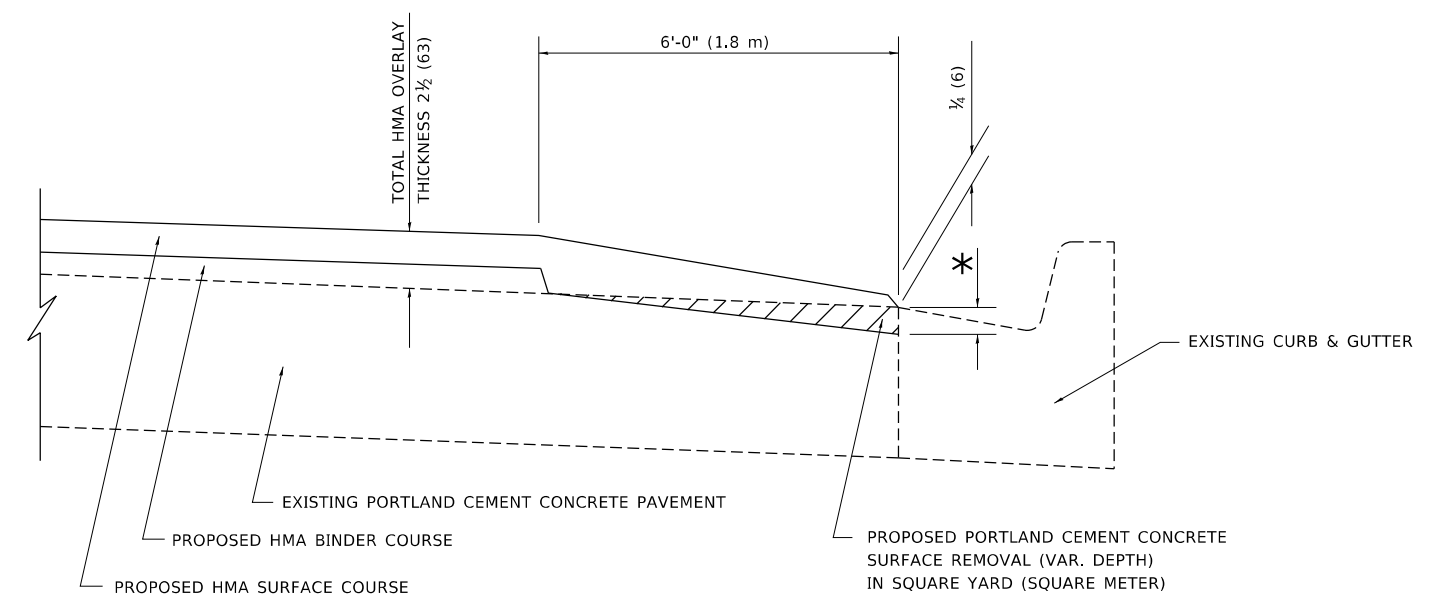
USER NAME = esocelo	DESIGNED - ES	REVISED -
	CHECKED - KN	REVISED -
PLOT SCALE =	DRAWN - ES	REVISED -
PLOT DATE = 4/12/2023	CHECKED - KN	REVISED -

**STATE OF ILLINOIS
DEPARTMENT OF TRANSPORTATION**

**NORTH ABUTMENT REPAIR DETAILS
STRUCTURE NO. 016-2418**

SHEET NO. 7 OF 7 SHEETS

F.A.P. RTE.	SECTION	COUNTY	TOTAL SHEETS	SHEET NO.
330	0330 022 BJ3	COOK	23	17
ILLINOIS FED. AID PROJECT			CONTRACT NO. 62T05	



**HMA TAPER AT
EDGE OF P.C.C. PAVEMENT**

HMA SURFACE COURSE	HMA BINDER COURSE	HMA BINDER COURSE	* MILLING AT GUTTER FLAG
MIX	THICKNESS	THICKNESS	
D	1 1/2 (38)	1 (25)	1 1/4 (33)
E OR SMA 9.5	1 3/4 (44)	3/4 (19)	1 1/2 (38)

ALL DIMENSIONS ARE IN INCHES (MILLIMETERS) UNLESS OTHERWISE SHOWN.

MODEL: Default
FILE: MainE_pav_solid-cw_bentley.com:PWIDOT\Documents\DOT_Offices\District_1\Projects\Dist1\22\33\CA\DD\Dist1\CAD\Projects\1823.dgn

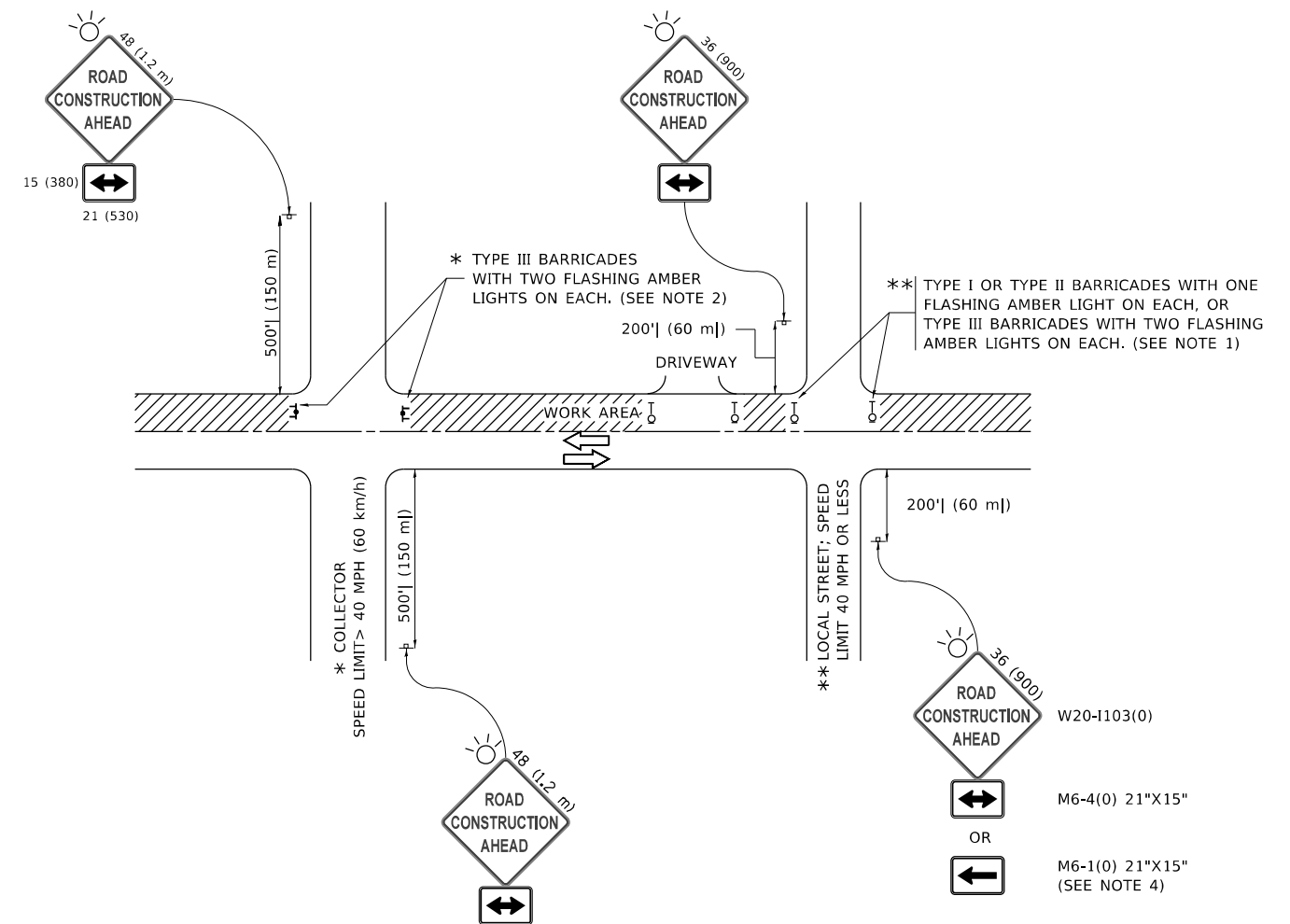
USER NAME = Shawn.Ley	DESIGNED - R. SHAH	REVISED - E. GOMEZ 12-21-00
	DRAWN - JIS	REVISED - R. BORO 01-01-07
PLOT SCALE = 50.0000 ' / in.	CHECKED - A. ABBAS	REVISED - JP CHANG 07-08-16
PLOT DATE = 1/23/2023	DATE - 09-10-94	REVISED - K. SMITH 11-18-22

**STATE OF ILLINOIS
DEPARTMENT OF TRANSPORTATION**

**HMA TAPER AT
EDGE OF P.C.C. PAVEMENT**

SCALE: NONE SHEET 1 OF 1 SHEETS STA. TO STA.

F.A. RTE.	SECTION	COUNTY	TOTAL SHEETS	SHEET NO.
330	FAP 0330 22 BJ3	COOK	23	18
BD400-06		BD-33	CONTRACT NO. 62T05	
ILLINOIS FED. AID PROJECT				



NOTES:

1. SIDE ROAD WITH A SPEED LIMIT OF 40 MPH (60 km/h) OR LESS AS SHOWN ON THE DRAWING AND AS DIRECTED BY THE ENGINEER:
 - a) ONE "ROAD CONSTRUCTION AHEAD" SIGN 36 x 36 (900x900) WITH A FLASHER MOUNTED ON IT APPROXIMATELY 200' (60 m) IN ADVANCE OF THE MAIN ROUTE.
 - b) THE CLOSED PORTION OF THE MAIN ROUTE SHALL BE PROTECTED BY BLOCKING WITH TYPE I, TYPE II OR TYPE III BARRICADES, 1/3 OF THE CROSS SECTION OF THE CLOSED PORTION.
2. SIDE ROAD WITH A SPEED LIMIT GREATER THAN 40 MPH (60 km/h) AS SHOWN ON THE DRAWING AND AS DIRECTED BY THE ENGINEER:
 - a) ONE "ROAD CONSTRUCTION AHEAD" SIGN 48 x 48 (1.2 m x 1.2 m) WITH A FLASHER MOUNTED ON IT APPROXIMATELY 500' (150 m) IN ADVANCE OF THE MAIN ROUTE.
 - b) BLOCKING WITH TYPE III BARRICADES, 1/2 OF THE CROSS SECTION OF THE CLOSED PORTION.
3. CONES MAY BE SUBSTITUTED FOR BARRICADES OR DRUMS AT HALF THE SPACING DURING DAY OPERATIONS. CONES SHALL BE A MINIMUM OF 28 (710) IN HEIGHT.
4. SIGNING AND THE WORK ZONE, A SINGLE HEADED ARROW (M6-1) SHALL BE USED IN LIEU OF THE DOUBLE HEADED ARROW (M6-4).
5. WHEN WORK IS BEING PERFORMED ON A SIDE ROAD OR DRIVEWAY, FOLLOW THE APPLICABLE STANDARD(S). THE DIRECTIONAL ARROW (M6-1 OR M6-4) SHALL BE COVERED OR REMOVED WHEN NO LONGER CONSISTENT WITH THE TRAFFIC CONTROL SET-UP.
6. ADVANCE WARNING SIGNS ARE TO BE OMITTED ON DRIVEWAYS UNLESS OTHERWISE SPECIFIED IN THE PLANS OR BY THE ENGINEER.
7. THE TRAFFIC CONTROL AND PROTECTION FOR SIDE ROADS, INTERSECTIONS, AND DRIVEWAYS SHALL BE INCLUDED IN THE COST OF SPECIFIED TRAFFIC CONTROL STANDARDS OR ITEMS.

All dimensions are in inches (millimeters) unless otherwise shown.

MODEL: D:\draft FILE NAME: p:\1108\BEBIDNTEG Illinois.gov\RWIDOT\Documents\DOT Offices\District 1\Projects\DH5422\34\CADData\CAD\Sheet\TC10.dgn

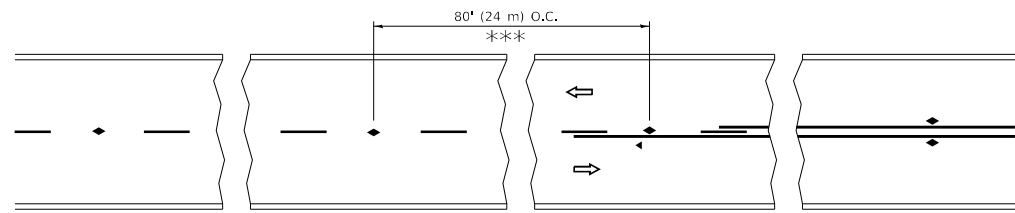
USER NAME = footemj	DESIGNED - L.H.A.	REVISED - A. HOUSEH 10-15-96
PLOT SCALE = 50,0000 ' / in.	CHECKED -	REVISED - T. RAMMACHER 01-06-00
PLOT DATE = 3/4/2019	DATE - 06-89	REVISED - A. SCHUETZE 07-01-13
		REVISED - A. SCHUETZE 09-15-16

**STATE OF ILLINOIS
DEPARTMENT OF TRANSPORTATION**

**TRAFFIC CONTROL AND PROTECTION FOR
SIDE ROADS, INTERSECTIONS, AND DRIVEWAYS**

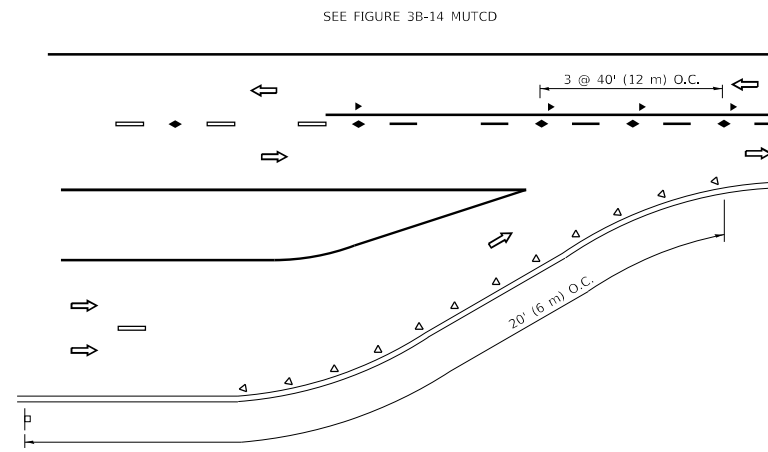
SCALE: NONE SHEET 1 OF 1 SHEETS STA. TO STA.

F.A. RTE.	SECTION	COUNTY	TOTAL SHEETS	SHEET NO.
330	FAP 0330 22 BJ3	COOK	23	19
TC-10			CONTRACT NO. 62T05	
ILLINOIS FED. AID PROJECT				

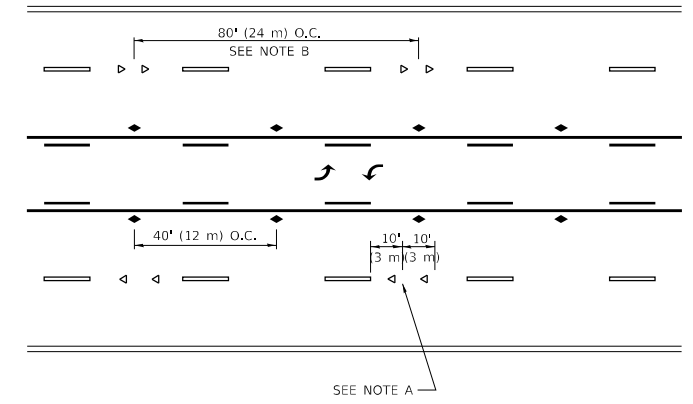


*** REDUCE TO 40' (12 m) O.C. ON CURVES WITH POSTED OR ADVISORY SPEED 45 M.P.H. (70 km/h) OR LESS.

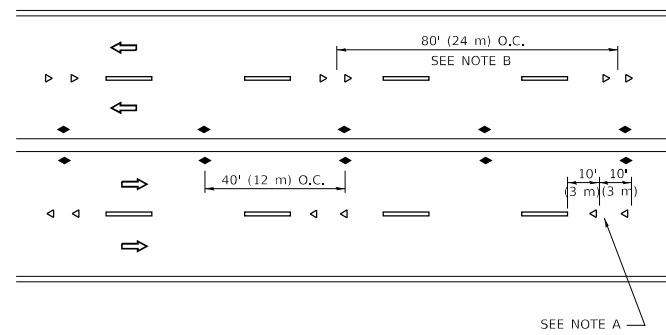
TWO-LANE/TWO-WAY



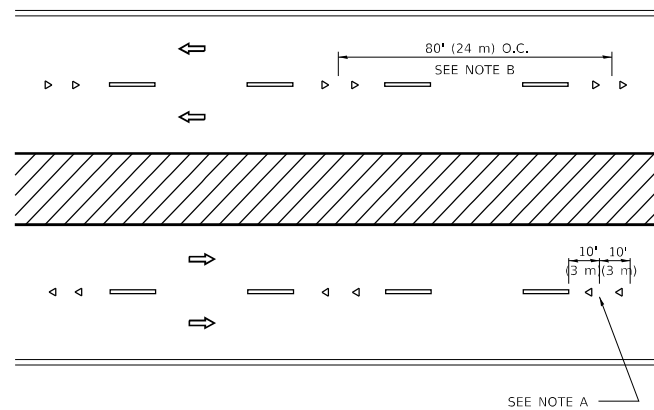
LANE REDUCTION TRANSITION



TWO-WAY LEFT TURN



MULTI-LANE/UNDIVIDED



MULTI-LANE/DIVIDED

GENERAL NOTES

1. MARKERS USED WITH DASHED LINES SHALL BE CENTERED IN THE GAP BETWEEN SEGMENTS.
2. MARKERS USED ADJACENT TO SOLID LINES SHALL BE OFFSET 2 TO 3 (50 TO 75) TOWARD TRAFFIC AS SHOWN.
3. MARKERS THROUGH TANGENTS LESS THAN 500' (150 m) IN LENGTH BETWEEN CURVES SHALL BE INSTALLED AT THE LESSER OF THE TWO CURVE SPACINGS.
4. MARKERS ARE TO BE USED ADJACENT TO BOTH SOLID WHITE LINES IN DUAL LEFT TURN LANES

SYMBOLS

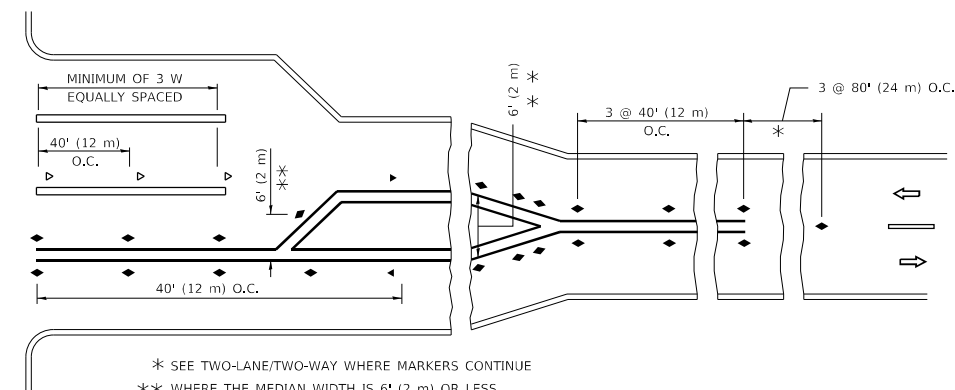
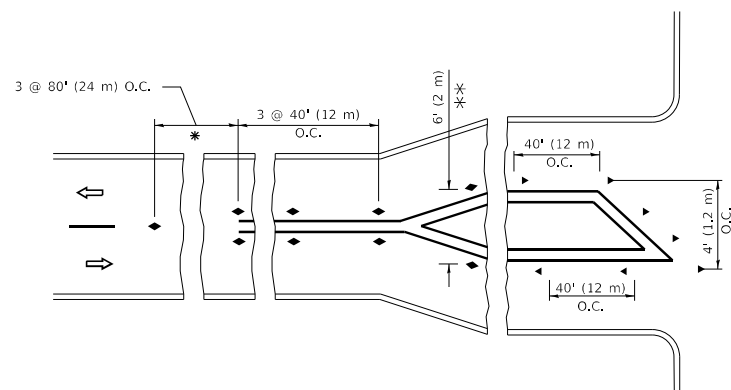
- YELLOW STRIPE
- WHITE STRIPE
- ◀ ONE-WAY AMBER MARKER
- ◀ ONE-WAY CRYSTAL MARKER (W/O)
- ◆ TWO-WAY AMBER MARKER

LANE MARKER NOTES

- A. USE DOUBLE LANE LINE MARKERS SPACED AS SHOWN.
- B. REDUCE TO 40' (12 m) O.C. ON CURVES WHERE ADVISORY SPEEDS ARE 10 M.P.H (20 km/h) LOWER THAN POSTED SPEEDS.

DESIGN NOTES

1. DOUBLE LANE LINE MARKERS SHALL BE USED UNLESS SPECIFIED OTHERWISE.
2. EXCEPT AS SHOWN ON THE LANE REDUCTION TRANSITION AND FREEWAY EXIT RAMP DETAIL, MARKERS ARE NOT TO BE SPECIFIED ON RIGHT EDGE LINES.
3. THE EXACT MARKER LIMITS, SPACING, AND COLOR SHALL BE INCLUDED IN THE PLANS WHEN STANDARD SPECIFICATIONS ARE NOT BEING USED.
4. MARKERS SHOULD NOT BE USED ALONGSIDE CURBS EXCEPT FOR EXTREMELY SHORT SECTIONS OF CURBS WHERE NOT MORE THAN TWO MARKERS WOULD BE INVOLVED.



* SEE TWO-LANE/TWO-WAY WHERE MARKERS CONTINUE
 *** WHERE THE MEDIAN WIDTH IS 6' (2 m) OR LESS USE TWO-WAY MARKERS.

TURN LANES

All dimensions are in inches (millimeters) unless otherwise shown.

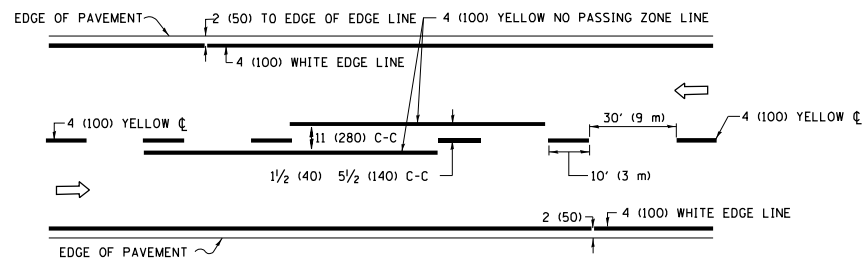
MODEL: D:\default... FILE NAME: p:\u0084EBID\NTEC... PROJECTS\DIHS\22-234\CAD\Draw\CAD\Sheet\TC11.dgn

USER NAME = footemj	DESIGNED -	REVISED - T. RAMMACHER 03-12-99
PLOT SCALE = 50.0000 "/td> <td>DRAWN -</td> <td>REVISED - T. RAMMACHER 01-06-00</td>	DRAWN -	REVISED - T. RAMMACHER 01-06-00
PLOT DATE = 3/4/2019	CHECKED -	REVISED - C. JUCIUS 09-09-09
	DATE -	REVISED - C. JUCIUS 07-01-13

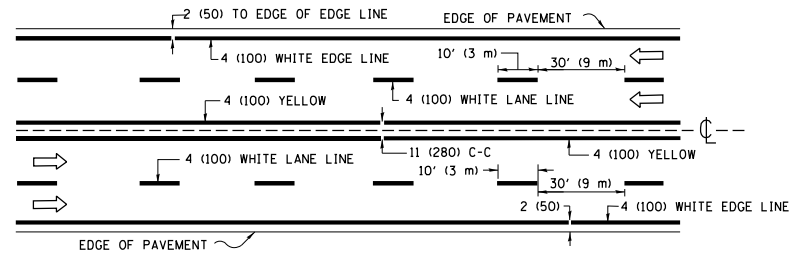
**STATE OF ILLINOIS
DEPARTMENT OF TRANSPORTATION**

TYPICAL APPLICATIONS			
RAISED REFLECTIVE PAVEMENT MARKERS (SNOW-PLOW RESISTANT)			
SCALE: NONE	SHEET 1	OF 1 SHEETS	STA. TO STA.

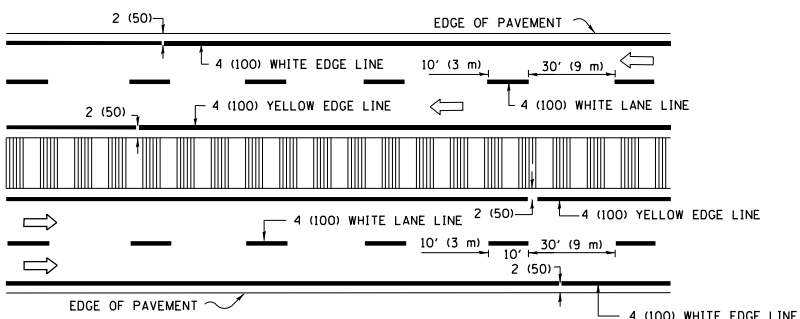
F.A. RTE.	SECTION	COUNTY	TOTAL SHEETS	SHEET NO.
330	FAP 0330 22 BJ3	COOK	23	20
TC-11			CONTRACT NO. 62T05	
ILLINOIS		FED. AID PROJECT		



2-LANE ROADWAY

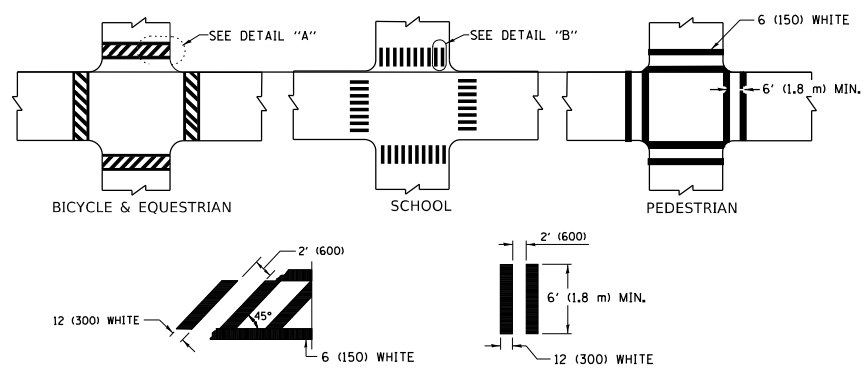


MULTI-LANE UNDIVIDED



MULTI-LANE DIVIDED WITH MEDIAN

TYPICAL LANE AND EDGE LINE MARKING

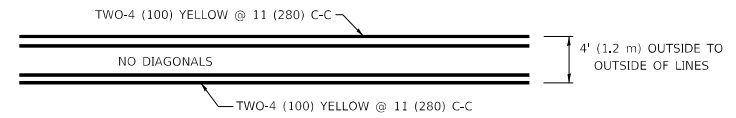


DETAIL "A"

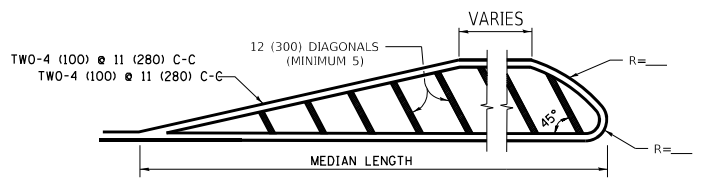
DETAIL "B"

TYPICAL CROSSWALK MARKING

* MARKINGS SHALL BE INSTALLED PARALLEL TO THE CENTERLINE OF THE ROAD WHICH IT CROSSES



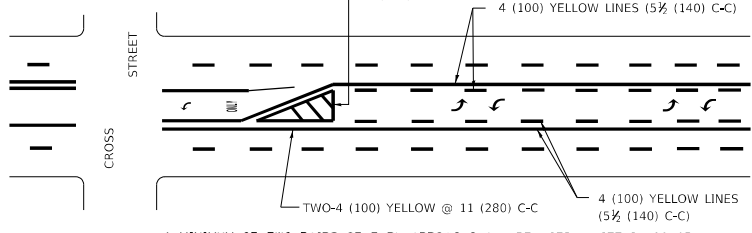
4' (1.2 m) WIDE MEDIANS ONLY



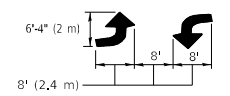
FOR MEDIAN LENGTHS WHERE DIAGONAL SPACING CANNOT BE ATTAINED, USE 5 (FIVE) EQUALLY SPACED DIAGONAL LINES.

DIAGONAL LINE SPACING: 50' (15 m) C-C (LESS THAN 30MPH (50 km/h))
75' (25 m) C-C 30MPH (50 km/h) TO 45MPH (70 km/h)
150' (45 m) C-C (MORE THAN 45MPH (70 km/h))

MEDIANS OVER 4' (1.2 m) WIDE

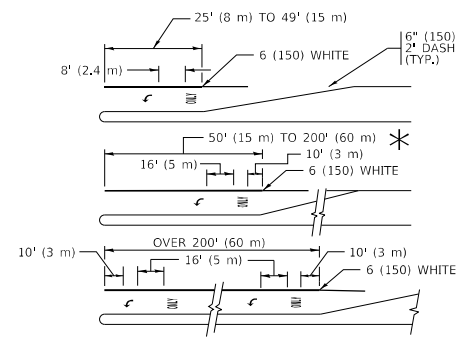


A MINIMUM OF TWO PAIRS OF TURN ARROWS SHALL BE USED, WHITE IN COLOR. ADDITIONAL PAIRS SHALL BE PLACED AT 200' (60 m) TO 300' (90 m) INTERVALS.



MEDIAN WITH TWO-WAY LEFT TURN LANE

TYPICAL PAINTED MEDIAN MARKING

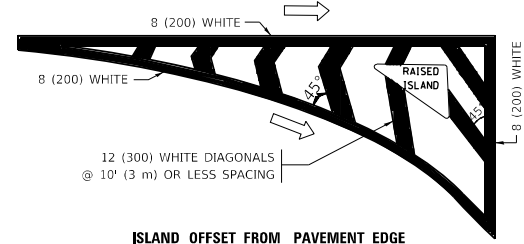


FULL SIZE LETTERS 8' (2.4 m) AND ARROWS SHALL BE USED.
AREA = 15.6 SQ. FT. (1.5 m²) ONLY AREA = 20.8 SQ. FT. (1.9 m²)

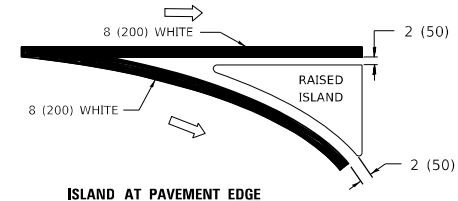
* TURN LANES IN EXCESS OF 400' (120 m) IN LENGTH MAY HAVE AN ADDITIONAL SET OF ARROW - "ONLY" INSTALLED MIDWAY BETWEEN THE OTHER TWO SETS OF ARROW - "ONLY".

TYPICAL LEFT (OR RIGHT) TURN LANE

TYPICAL TURN LANE MARKING

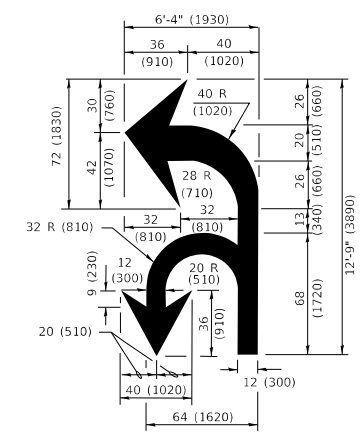


ISLAND OFFSET FROM PAVEMENT EDGE

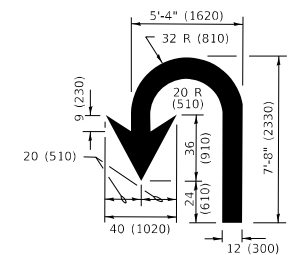


ISLAND AT PAVEMENT EDGE

TYPICAL ISLAND MARKING



COMBINATION LEFT AND U-TURN



U-TURN

LANE REDUCTION TRANSITION

* LANE REDUCTION ARROWS REQUIRED AT SPEEDS OF 45 MPH OR GREATER OR WHEN SPECIFIED IN PLANS.

D(FT)	SPEED LIMIT
345	30
425	35
500	40
580	45
665	50
750	55

TYPE OF MARKING	WIDTH OF LINE	PATTERN	COLOR	SPACING / REMARKS
CENTERLINE ON 2 LANE PAVEMENT	4 (100)	SKIP-DASH	YELLOW	10' (3 m) LINE WITH 30' (9 m) SPACE
CENTERLINE ON MULTI-LANE UNDIVIDED PAVEMENT	2 @ 4 (100)	SOLID	YELLOW	11 (280) C-C
NO PASSING ZONE LINES: FOR ONE DIRECTION FOR BOTH DIRECTIONS	4 (100) 2 @ 4 (100)	SOLID SOLID	YELLOW YELLOW	5/2 (140) C-C FROM SKIP-DASH CENTERLINE 11 (280) C-C OMIT SKIP-DASH CENTERLINE BETWEEN
LANE LINES	4 (100) 5 (125) ON FREEWAYS	SKIP-DASH SKIP-DASH	WHITE WHITE	10' (3 m) LINE WITH 30' (9 m) SPACE
DOTTED LINES (EXTENSIONS OF CENTER, LANE OR TURN LANE MARKINGS)	SAME AS LINE BEING EXTENDED	SKIP-DASH	SAME AS LINE BEING EXTENDED	2' (600) LINE WITH 6' (1.8 m) SPACE
EDGE LINES	4 (100)	SOLID	YELLOW-LEFT WHITE-RIGHT	OUTLINE MEDIANS IN YELLOW
TURN LANE MARKINGS	6 (150) LINE; FULL SIZE LETTERS & SYMBOLS (8' (2.4m))	SOLID	WHITE	SEE TYPICAL TURN LANE MARKING DETAIL
TWO WAY LEFT TURN MARKING	2 @ 4 (100) EACH DIRECTION 8' (2.4m) LEFT ARROW	SKIP-DASH AND SOLID IN PAIRS	YELLOW WHITE	10' (3 m) LINE WITH 30' (9 m) SPACE FOR SKIP-DASH; 5/2 (140) C-C BETWEEN SOLID LINE AND SKIP-DASH LINE SEE TYPICAL TWO-WAY LEFT TURN MARKING DETAIL
CROSSWALK LINES (PEDESTRIAN) A. DIAGONALS (BIKE & EQUESTRIAN) B. LONGITUDINAL BARS (SCHOOL)	2 @ 6 (150) 12 (300) @ 45° 12 (300) @ 90°	SOLID SOLID SOLID	WHITE WHITE WHITE	NOT LESS THAN 6' (1.8 m) APART 2' (600) APART SEE TYPICAL CROSSWALK MARKING DETAILS.
STOP LINES	24 (600)	SOLID	WHITE	PLACE 4' (1.2 m) IN ADVANCE OF AND PARALLEL TO CROSSWALK, IF PRESENT. OTHERWISE, PLACE AT DESIRED STOPPING POINT, PARALLEL TO CROSSROAD CENTERLINE, WHERE POSSIBLE
PAINTED MEDIANS	2 @ 4 (100) WITH 12 (300) DIAGONALS @ 45° NO DIAGONALS USED FOR 4' (1.2 m) WIDE MEDIANS	SOLID	YELLOW: TWO WAY TRAFFIC WHITE: ONE WAY TRAFFIC	11 (280) C-C FOR THE DOUBLE LINE SEE TYPICAL PAINTED MEDIAN MARKING.
GORE MARKING AND CHANNELIZING LINES	8 (200) WITH 12 (300) DIAGONALS @ 45°	SOLID	WHITE	DIAGONALS: 15' (4.5 m) C-C (LESS THAN 30MPH (50 km/h)) 20' (6 m) C-C 30MPH (50 km/h) TO 45MPH (70 km/h) 30' (9 m) C-C (OVER 45MPH (70 km/h))
RAILROAD CROSSING	24 (600) TRANSVERSE LINES "RR" IS 8' (1.8 m) LETTERS: 16 (400) LINE FOR "X"	SOLID	WHITE	SEE STATE STANDARD 780001 AREA OF: "R"=3.6 SQ. FT. (0.33 m ²) EACH "X"=54.0 SQ. FT. (5.0 m ²)
SHOULDER DIAGONALS (REQUIRED FOR SHOULDERS ≥ 8')	12 (300) @ 45°	SOLID	WHITE - RIGHT YELLOW - LEFT	50' (15 m) C-C (LESS THAN 30MPH (50 km/h)) 75' (25 m) C-C (30 MPH (50 km/h) TO 45MPH (70 km/h)) 150' (45 m) C-C (OVER 45MPH (70 km/h))
U TURN ARROW	SEE DETAIL	SOLID	WHITE	16.3 SF
2 ARROW COMBINATION LEFT AND U TURN	SEE DETAIL	SOLID	WHITE	30.4 SF

FOR FURTHER DETAILS ON PAVEMENT MARKING REFER TO STANDARD SPECIFICATIONS FOR ROAD AND BRIDGE CONSTRUCTION AND STATE STANDARD 780001.

All dimensions are in inches (millimeters) unless otherwise shown.

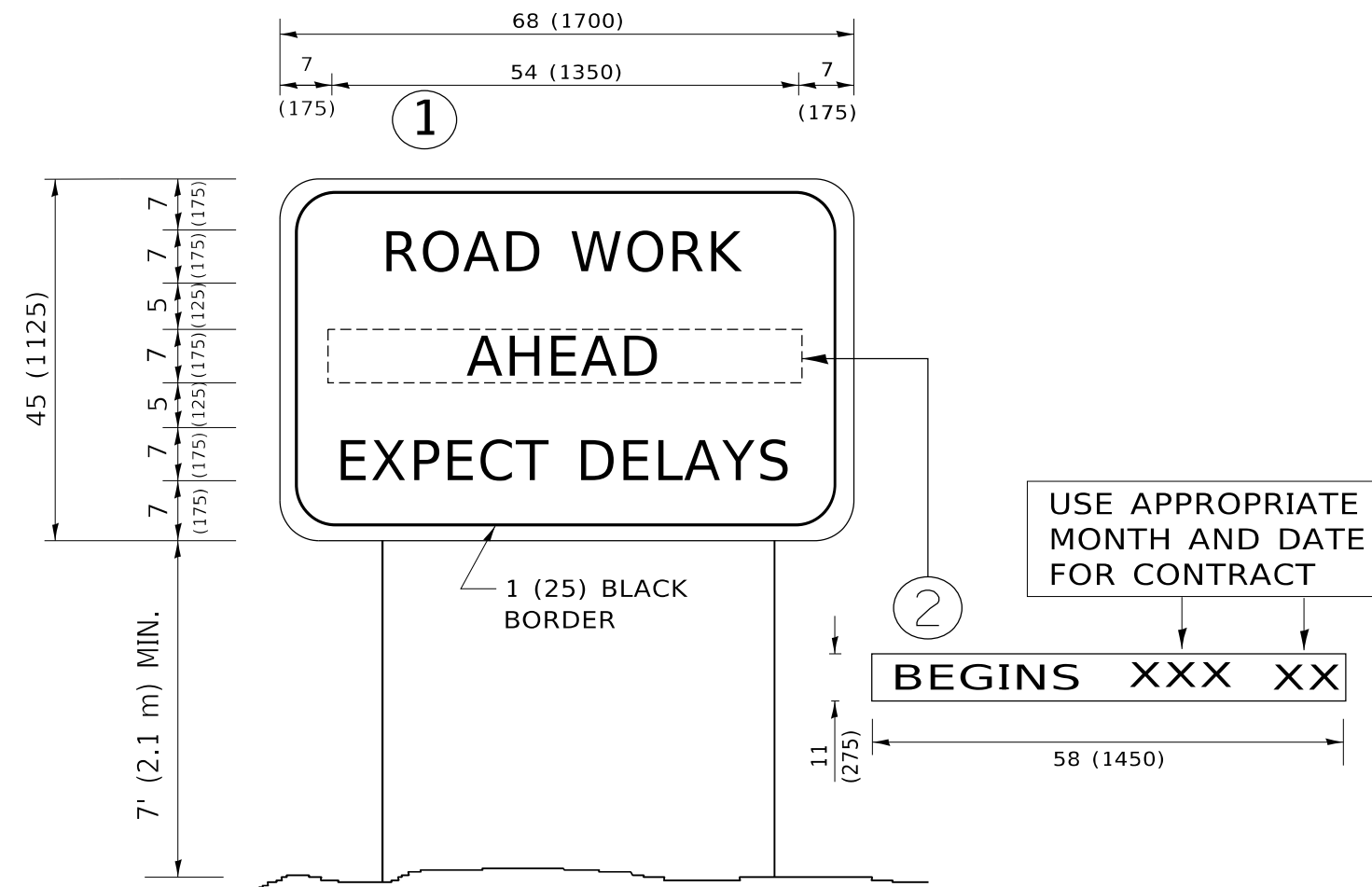
MODEL: D:\default
FILE NAME: p:\u0008\EBID\ITEC\Illinois\pav\RWDOT\Documents\DOT Office\District 1\Projects\Dist1\5422-234\CD\Drawn\CAD\pav\sheet13.dwg

USER NAME = footemj	DESIGNED - EVERS	REVISED - C. JUCIUS 09-09-09
PLOT SCALE = 50.0000" / in.	CHECKED -	REVISED - C. JUCIUS 07-01-13
PLOT DATE = 3/4/2019	DATE - 03-19-90	REVISED - C. JUCIUS 12-21-15
		REVISED - C. JUCIUS 04-12-16

**STATE OF ILLINOIS
DEPARTMENT OF TRANSPORTATION**

DISTRICT ONE TYPICAL PAVEMENT MARKINGS	
SCALE: NONE	SHEET 1 OF 2 SHEETS STA. TO STA.

F.A. RTE.	SECTION	COUNTY	TOTAL SHEETS	SHEET NO.
330	FAP 0330 22 BJ3	COOK	23	21
TC-13		CONTRACT NO. 62T05		
		ILLINOIS FED. AID PROJECT		



NOTES:

1. USE BLACK LETTERING ON ORANGE BACKGROUND.
2. ERECT SIGNS IN ADVANCE OF THE LOCATION FOR THE "ROAD CONSTRUCTION AHEAD" SIGN AT LOCATIONS AS DIRECTED BY THE ENGINEER.
3. ERECT SIGN ① WITH INSTALLED PANEL ② ONE WEEK PRIOR TO THE START OF CONSTRUCTION.
4. REMOVE PANEL ② SOON AFTER THE START OF CONSTRUCTION.
5. SEE SPECIAL PROVISION FOR "TEMPORARY INFORMATION SIGNING" FOR ADDITIONAL INFORMATION.
6. ONE SIGN ASSEMBLY EQUALS 25.70 SQ. FT. (2.3 SQ. M.)
7. SHALL BE PAID FOR AS TEMPORARY INFORMATION SIGNING.

ALL DIMENSIONS ARE IN INCHES (MILLIMETERS) UNLESS OTHERWISE SHOWN.

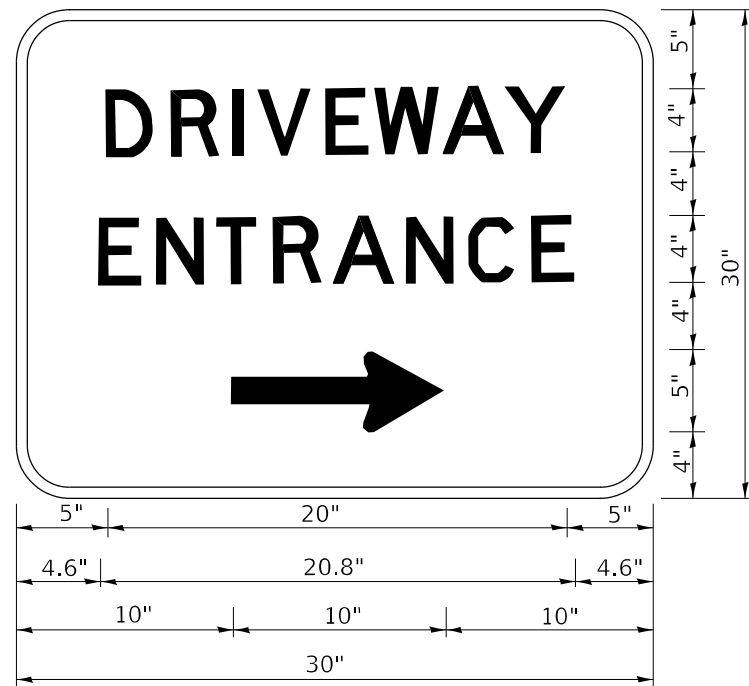
MODEL: D:\draft FILE NAME: p:\1108\EBID\NTEG\Illinois.gov\PWIDOT\Documents\DOT_Offices\District_1\Projects\DH\5422\240\CAD\Drawings\CAD\Sheet\TC22.dgn

USER NAME = foote[m]	DESIGNED -	REVISED - R. MIRS 09-15-97
	DRAWN -	REVISED - R. MIRS 12-11-97
PLOT SCALE = 50.0000 ' / in.	CHECKED -	REVISED - T. RAMMACHER 02-02-99
PLOT DATE = 3/4/2019	DATE -	REVISED - C. JUCIUS 01-31-07

**STATE OF ILLINOIS
DEPARTMENT OF TRANSPORTATION**

ARTERIAL ROAD INFORMATION SIGN			
SCALE: NONE	SHEET 1	OF 1 SHEETS	STA. TO STA.

F.A. RTE.	SECTION	COUNTY	TOTAL SHEETS	SHEET NO.
330	FAP 0330 22 BJ3	COOK	23	22
TC-22		CONTRACT NO. 62T05		
ILLINOIS FED. AID PROJECT				



3.0" RADIUS, 0.5" BORDER, WHITE ON GREEN; REFLECTORIZED
 "DRIVEWAY" D; "ENTRANCE" D; STANDARD ARROW CUSTOM 12.0" x 5.0"

NOTES:

1. HALF OF THE SIGNS WILL REQUIRE A LEFT HAND FACING ARROW.
2. TWO SIGNS SHALL BE USED AT EACH COMMERCIAL ENTRANCE PLACED BACK-TO-BACK: ONE WITH A RIGHT HAND ARROW (SHOWN) SHALL BE PLACED ON THE NEAR RIGHT SIDE THE DRIVEWAY AND ONE WITH A LEFT HAND ARROW SHALL BE PLACED ON THE FAR LEFT SIDE OF THE DRIVEWAY.
3. SIGNS TO BE PAID FOR AS ITEM "TEMPORARY INFORMATION SIGNING".

MODEL: D:\default
 FILE NAME: p:\planning\mtdat\illinois.gov\PWIDOT\Documents\DOT_Offices\District_1\Projects\Dist5022\2A\CD\Drawn\CD\Sheet326.dgn

USER NAME = Ieysa	DESIGNED -	REVISED - C. JUCIUS 02-15-07
	DRAWN -	REVISED -
PLOT SCALE = 50.0000 ' / in.	CHECKED -	REVISED -
PLOT DATE = 8/6/2021	DATE -	REVISED -

**STATE OF ILLINOIS
 DEPARTMENT OF TRANSPORTATION**

DRIVEWAY ENTRANCE SIGNING

SCALE: NONE SHEET 1 OF 1 SHEETS STA. TO STA.

F.A. RTE.	SECTION	COUNTY	TOTAL SHEETS	SHEET NO.
330	FAP 0330 22 BJ3	COOK	23	23
TC-26			CONTRACT NO. 62T05	
		ILLINOIS	FED. AID PROJECT	