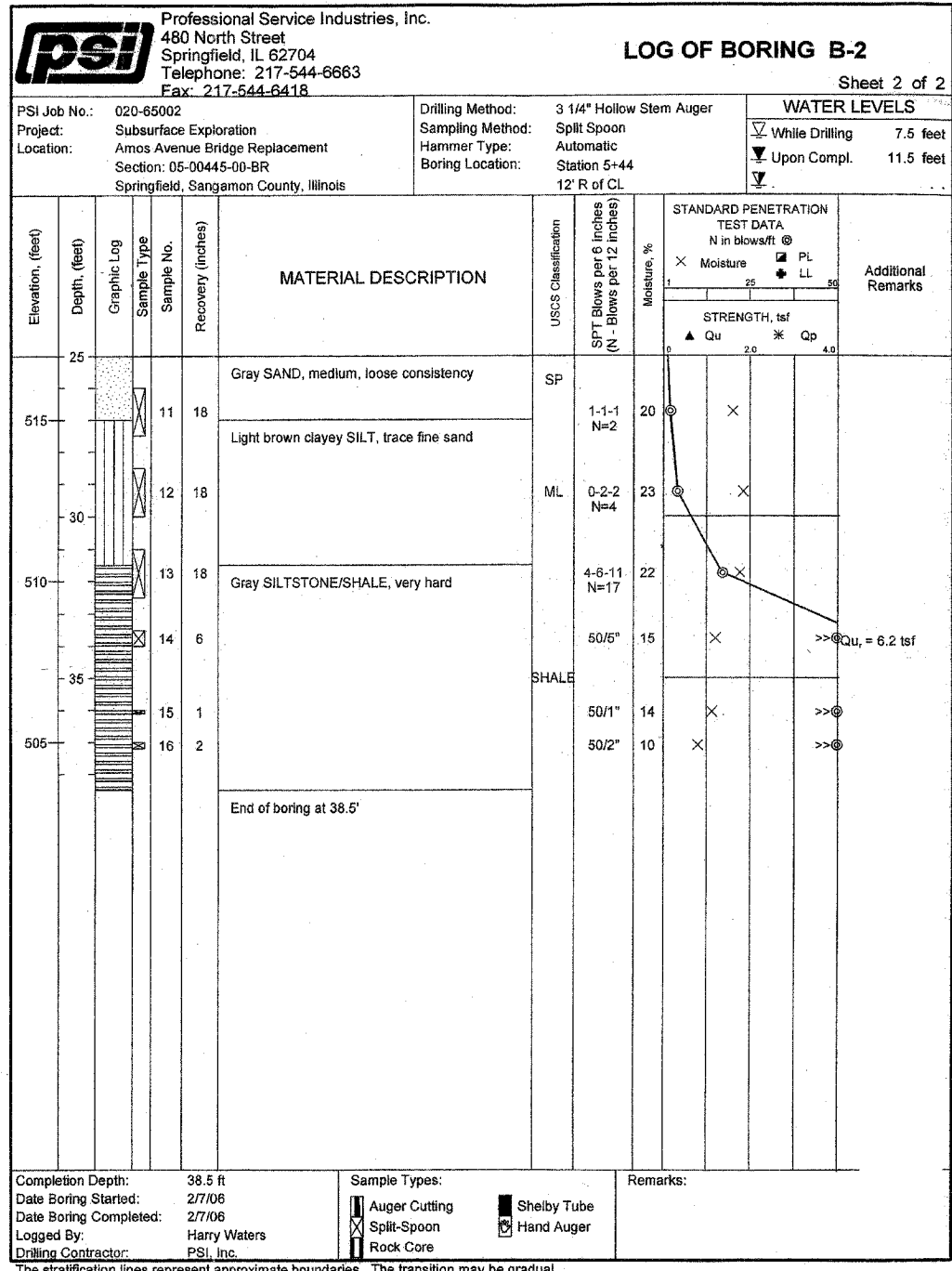
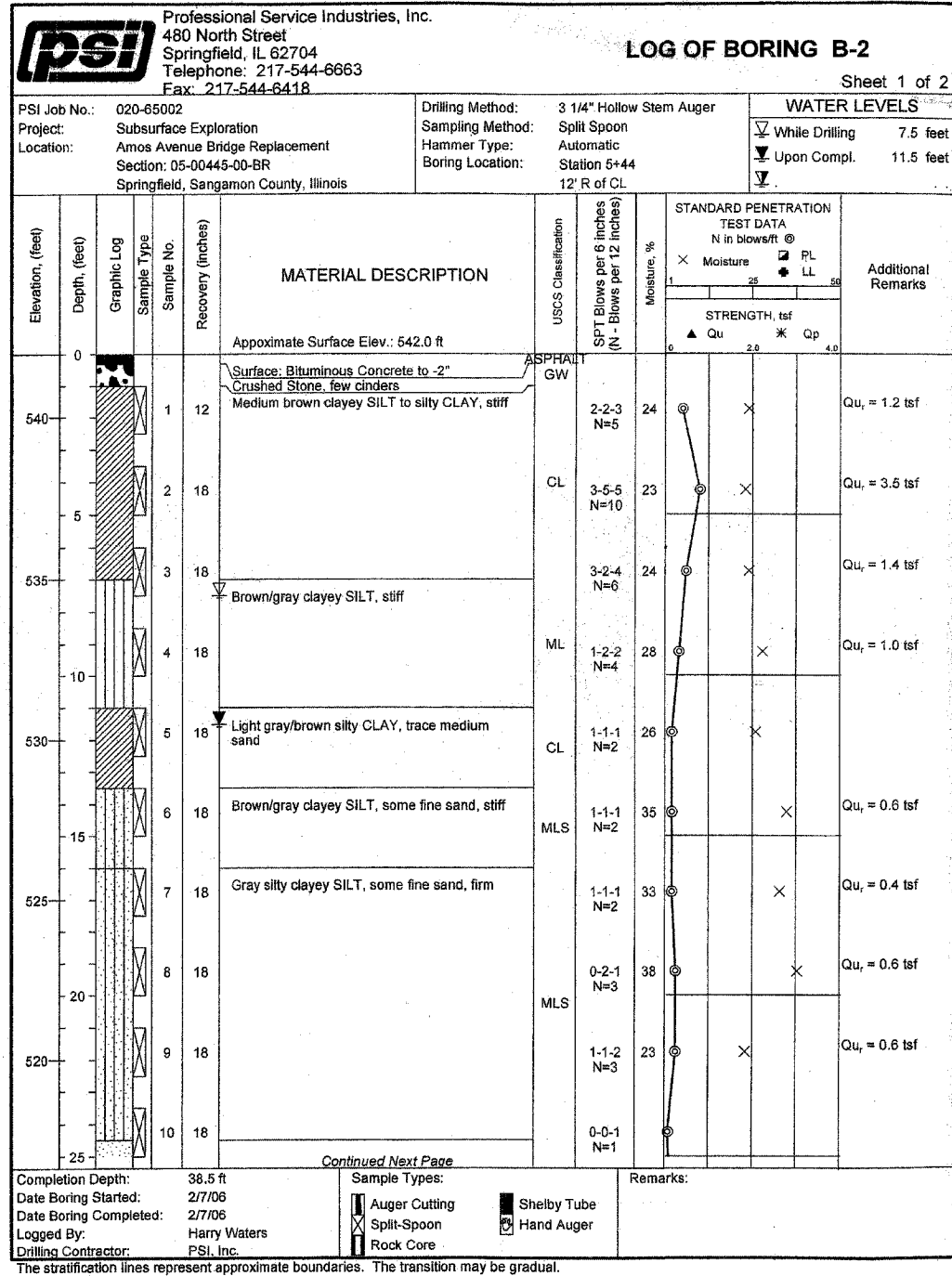


F.A.U. RTE.	SECTION	COUNTY	TOTAL SHEETS	SHEET NO.
8009	05-00445-00-BR	SANGAMON	17	15
STA.		TO STA.		
FED. ROAD DIST. NO.		ILLINOIS FED. AID PROJECT		

SHEET 9 OF 9 SHEETS



L:\Springfield\0500445\Draw\Sheets\Borings\Bo2.dwg 2/24/2006

REVISIONS	
NAME	DATE

CRAWFORD MURPHY & TILLY, INC.  
CONSULTING ENGINEERS  
SPRINGFIELD, IL ■ AURORA, IL ■ ST. LOUIS, MO  
ROCKFORD, IL ■ PEORIA, IL ■ CHICAGO, IL

CITY OF SPRINGFIELD, ILLINOIS

**BORING LOG II**

FAU 8009-AMOS AVE. OVER DRAINAGE DITCH  
SECTION 05-00445-00-BR  
SANGAMON COUNTY  
STATION 4+69.00 S.N. 084-8009

SCALE: NONE      DRAWN BY: GLD  
DATE: 5/26/06      CHECKED BY: GBR