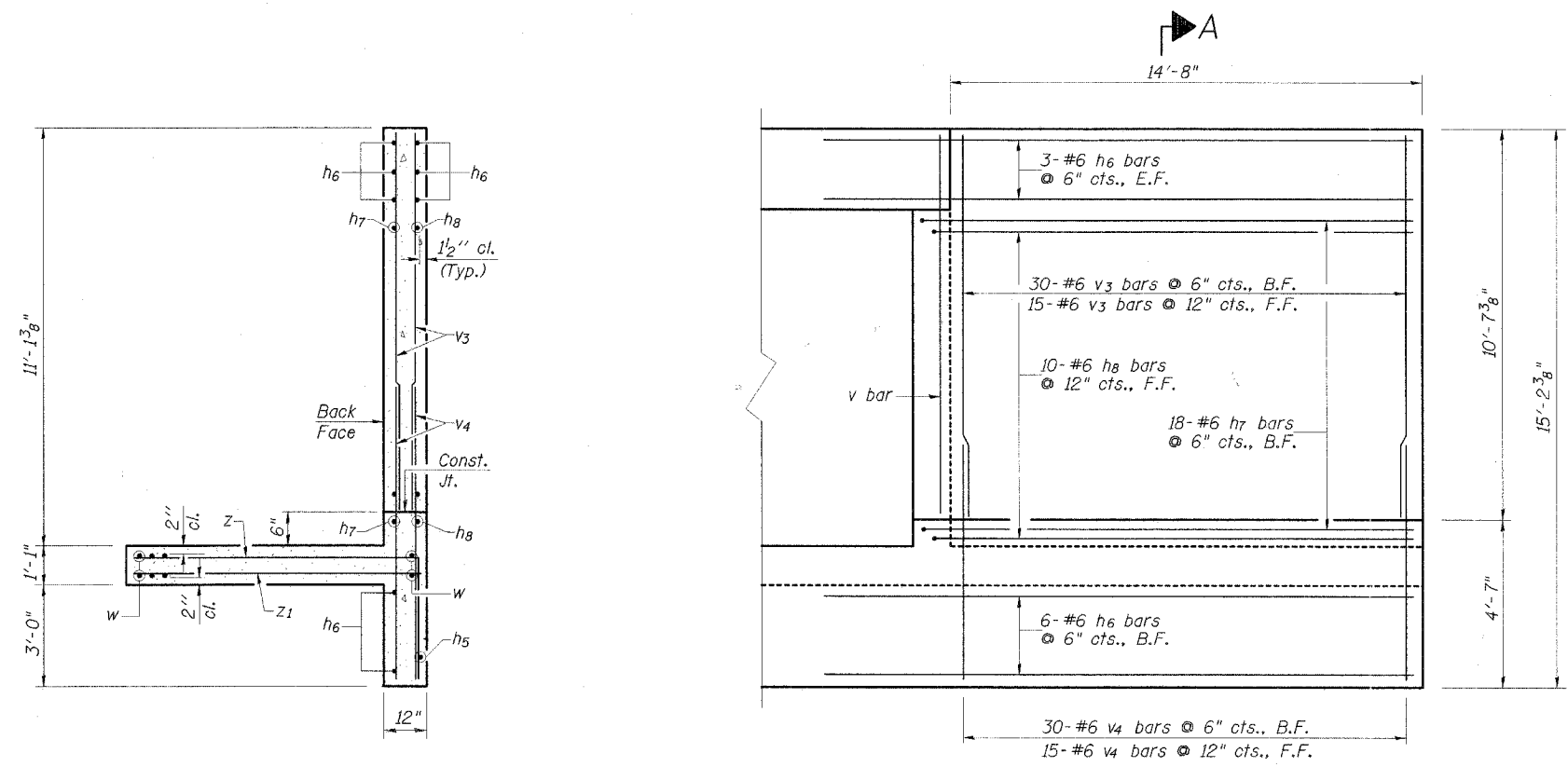
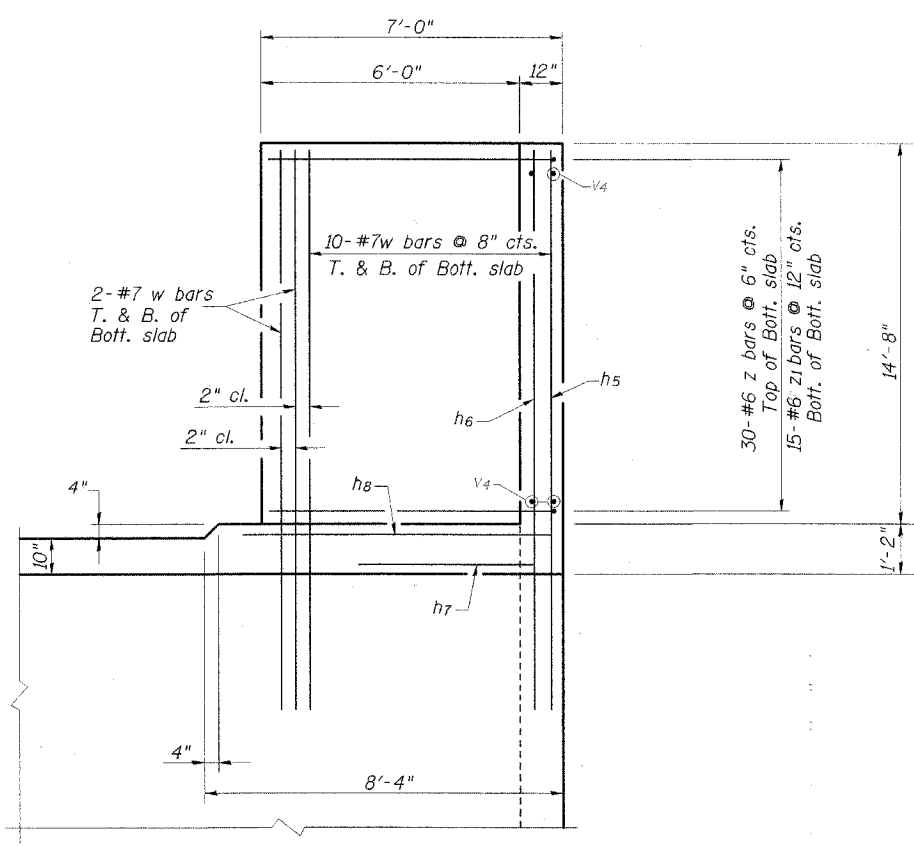


F.A.U. RTE.	SECTION	COUNTY	TOTAL SHEETS	SHEET NO.
8009	05-00445-00-BR	SANGAMON	17	12
STA.		TO STA.		
FED. ROAD DIST. NO.		ILLINOIS FED. AID PROJECT		
SHEET 6 OF 9 SHEETS				

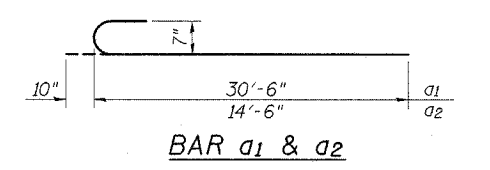


SECTION A-A

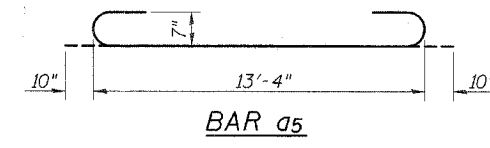
WINGWALL ELEVATION



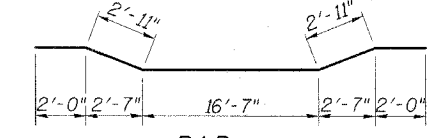
PLAN - BOTTOM SLAB



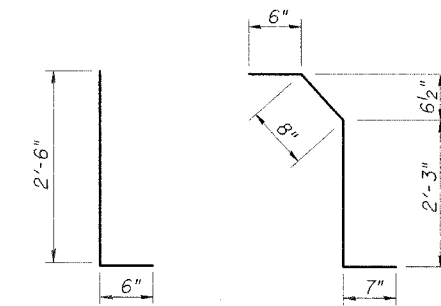
BAR a1 & a2



BAR a5

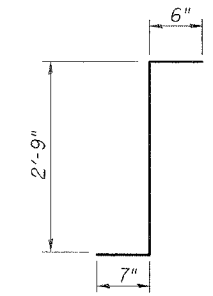


BAR a6

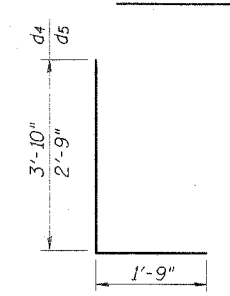


BARS d & d2

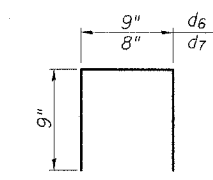
BAR d1



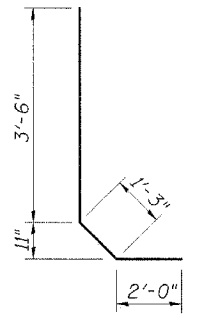
BAR d3



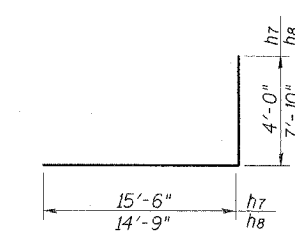
BARS d4 & d5



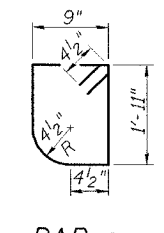
BARS d6 & d7



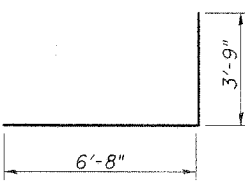
BAR v2



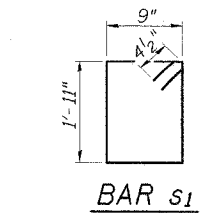
BARS h7 & h8



BAR s



BAR z



BAR s1

BILL OF MATERIAL

Bar	No.	Size	Length	Shape
a	61	#7	28'-6"	
a1	61	#7	31'-4"	
a2	61	#7	15'-4"	
a3	62	#5	8'-5"	
a4	63	#7	19'-7"	
a5	126	#7	15'-0"	
a6	63	#7	26'-5"	
a7	126	#7	13'-4"	
d(E)	114	#5	3'-0"	
d1(E)	130	#5	4'-0"	
d2(E)	114	#4	3'-0"	
d3(E)	130	#4	3'-10"	
d4	52	#4	5'-7"	
d5	32	#4	4'-6"	
d6(E)	44	#4	2'-3"	
d7(E)	16	#4	2'-2"	
e (E)	24	#4	11'-1"	
e1(E)	12	#4	15'-6"	
e2(E)	8	#8	12'-0"	
e3(E)	4	#8	15'-6"	
e4(E)	8	#5	13'-3"	
e5(E)	4	#5	15'-6"	
h	210	#6	22'-0"	
h1	86	#4	21'-7"	
h2	16	#8	23'-7"	
h3	16	#5	22'-2"	
h4	176	#5	21'-9"	
h5	4	#6	37'-0"	
h6	48	#6	18'-5"	
h7	72	#6	19'-6"	
h8	40	#6	22'-7"	
s	44	#4	5'-11"	
s1	44	#4	6'-1"	
v	344	#4	9'-2"	
v1	170	#4	3'-3"	
v2	170	#4	6'-9"	
v3	180	#6	10'-3"	
v4	180	#6	7'-3"	
w	96	#7	19'-3"	
z	120	#6	10'-5"	
z1	60	#6	6'-8"	
Concrete Box Culverts		Cu. Yd.	274.4	
Reinforcement Bars		Pound	56220	
Reinforcement Bars, Epoxy Coated		Pound	2450	

Reinforcement bars designated (E) shall be epoxy coated.

REVISIONS	
NAME	DATE

CITY OF SPRINGFIELD, ILLINOIS
CULVERT DETAILS II
 FAU 8009-AMOS AVE. OVER DRAINAGE DITCH
 SECTION 05-00445-00-BR
 SANGAMON COUNTY
 STATION 4+69.00 S.N. 084-8009
 SCALE: NONE DRAWN BY: GLD
 DATE: 5/26/06 CHECKED BY: GBR

CMT
 CRAWFORD MURPHY & TILLY, INC.
 CONSULTING ENGINEERS
 SPRINGFIELD, IL ■ AURORA, IL ■ ST. LOUIS, MO
 ROCKFORD, IL ■ PEORIA, IL ■ CHICAGO, IL

I:\Springfield\050250\Draw\Sheets\CULVERT DETAILS I.dgn
 5/24/2006