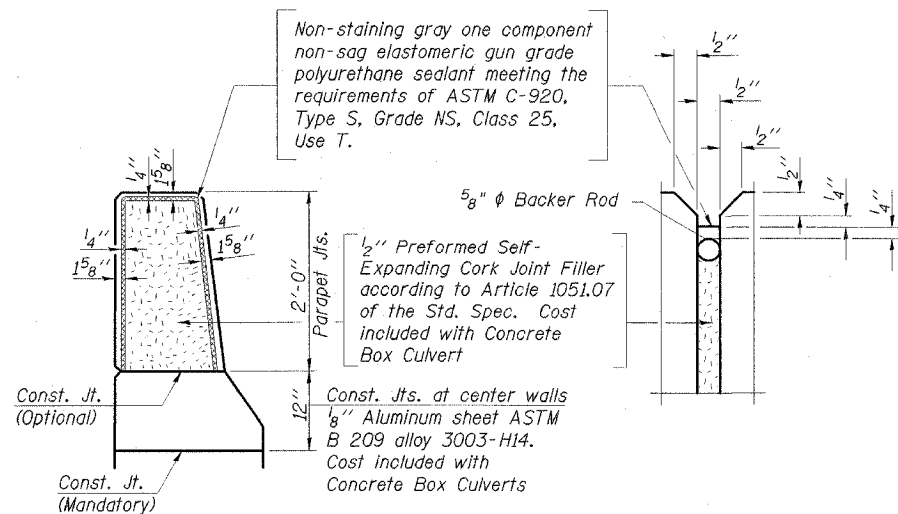
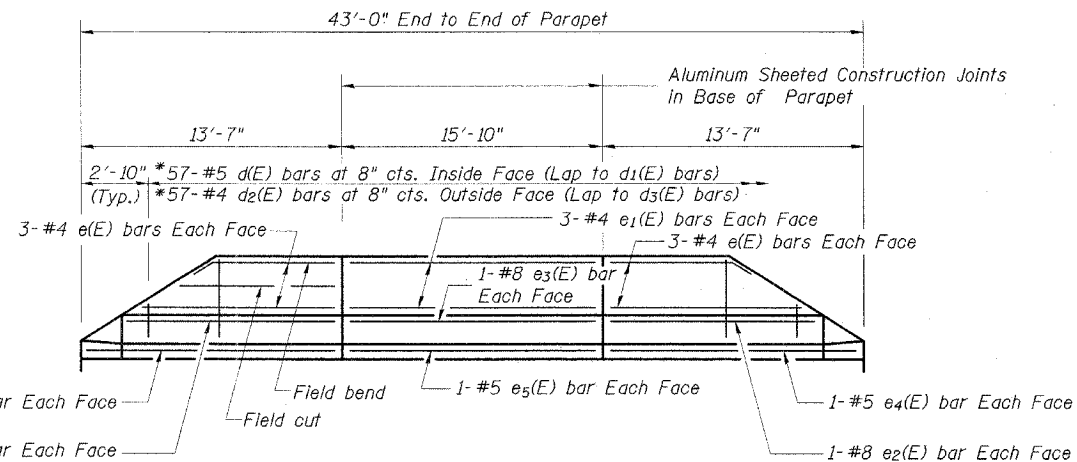


F.A.U. RTE.	SECTION	COUNTY	TOTAL SHEETS	SHEET NO.
8009	05-00445-00-BR	SANGAMON	17	11
STA.		TO STA.		
FED. ROAD DIST. NO.		ILLINOIS	FED. AID PROJECT	

SHEET 5 OF 9 SHEETS

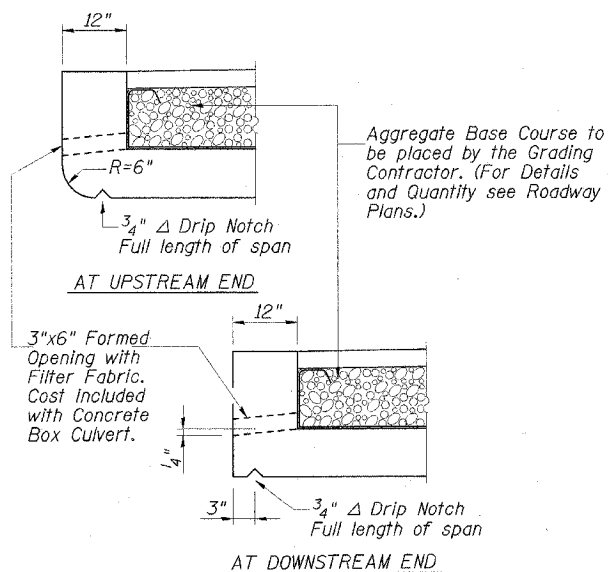


**PARAPET JOINT DETAILS**

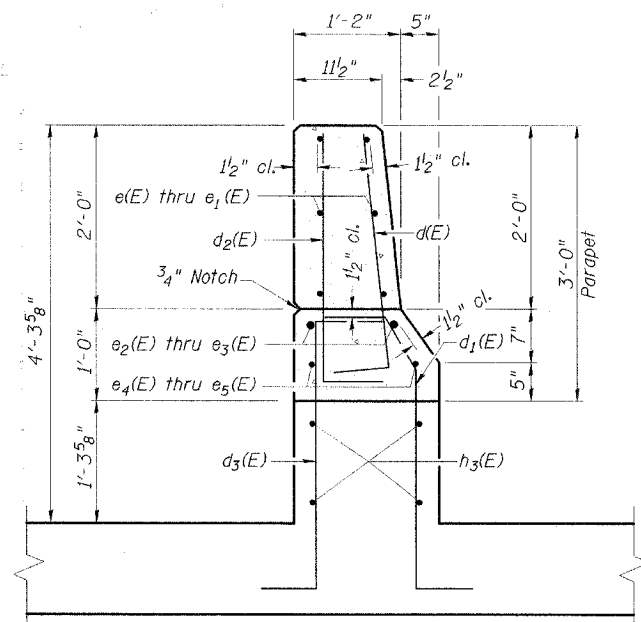


**INSIDE ELEVATION OF PARAPET**

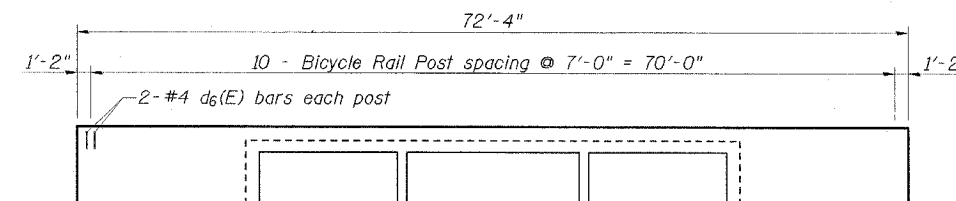
\*Cut to fit @ end of parapet



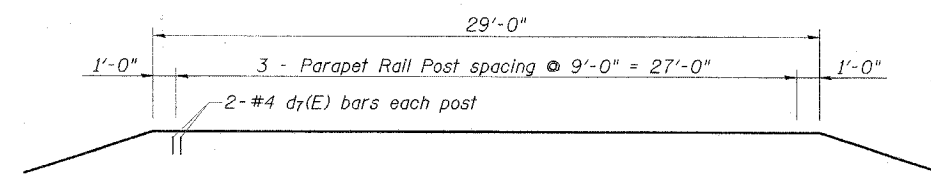
**DRAIN DETAIL**



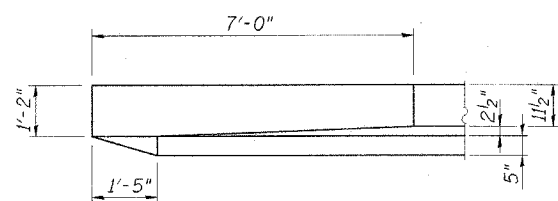
**SECTION A-A**



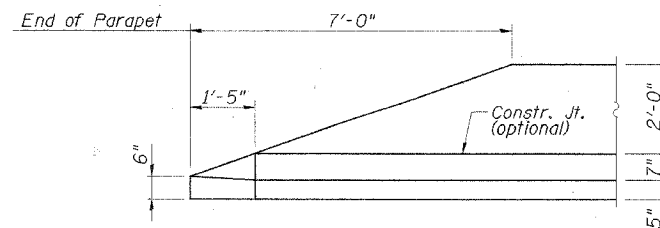
**BICYCLE RAIL POST SPACING**  
(Typical both sides)



**PARAPET RAIL POST SPACING**  
(Typical both Parapets)



**PLAN**



**ELEVATION**

**END OF PARAPET DETAIL**

**NOTES:**

1. Reinforcement bars designated (E) shall be epoxy coated.

REVISIONS	
NAME	DATE

CITY OF SPRINGFIELD, ILLINOIS  
**PARAPET DETAILS**  
 FAU 8009-AMOS AVE. OVER DRAINAGE DITCH  
 SECTION 05-00445-00-BR  
 SANGAMON COUNTY  
 STATION 4+69.00 S.N. 084-8009

SCALE: NONE DRAWN BY: GLD  
 DATE: 5/26/06 CHECKED BY: GBR

**CMT**  
 CRAWFORD MURPHY & TILLY, INC.  
 CONSULTING ENGINEERS  
 SPRINGFIELD, IL ■ AURORA, IL ■ ST. LOUIS, MO  
 ROCKFORD, IL ■ PEORIA, IL ■ CHICAGO, IL