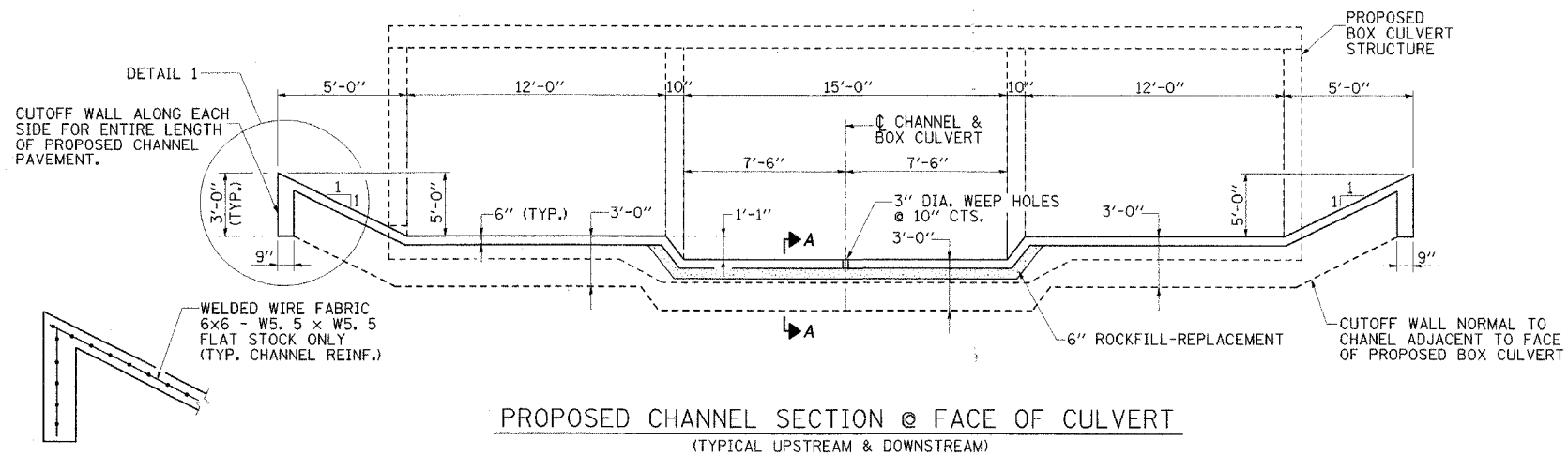
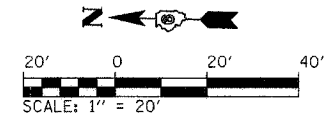
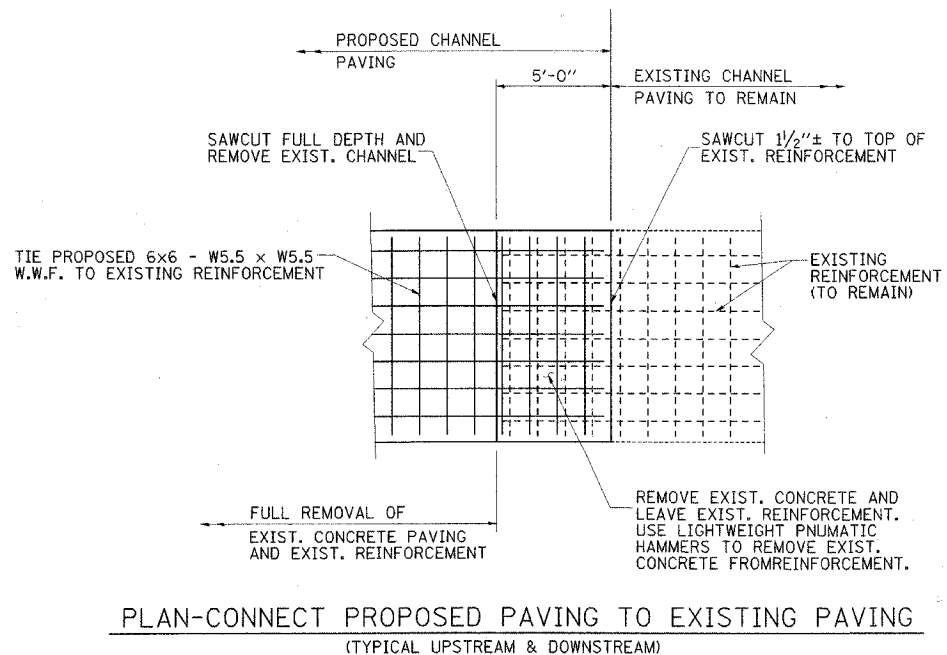
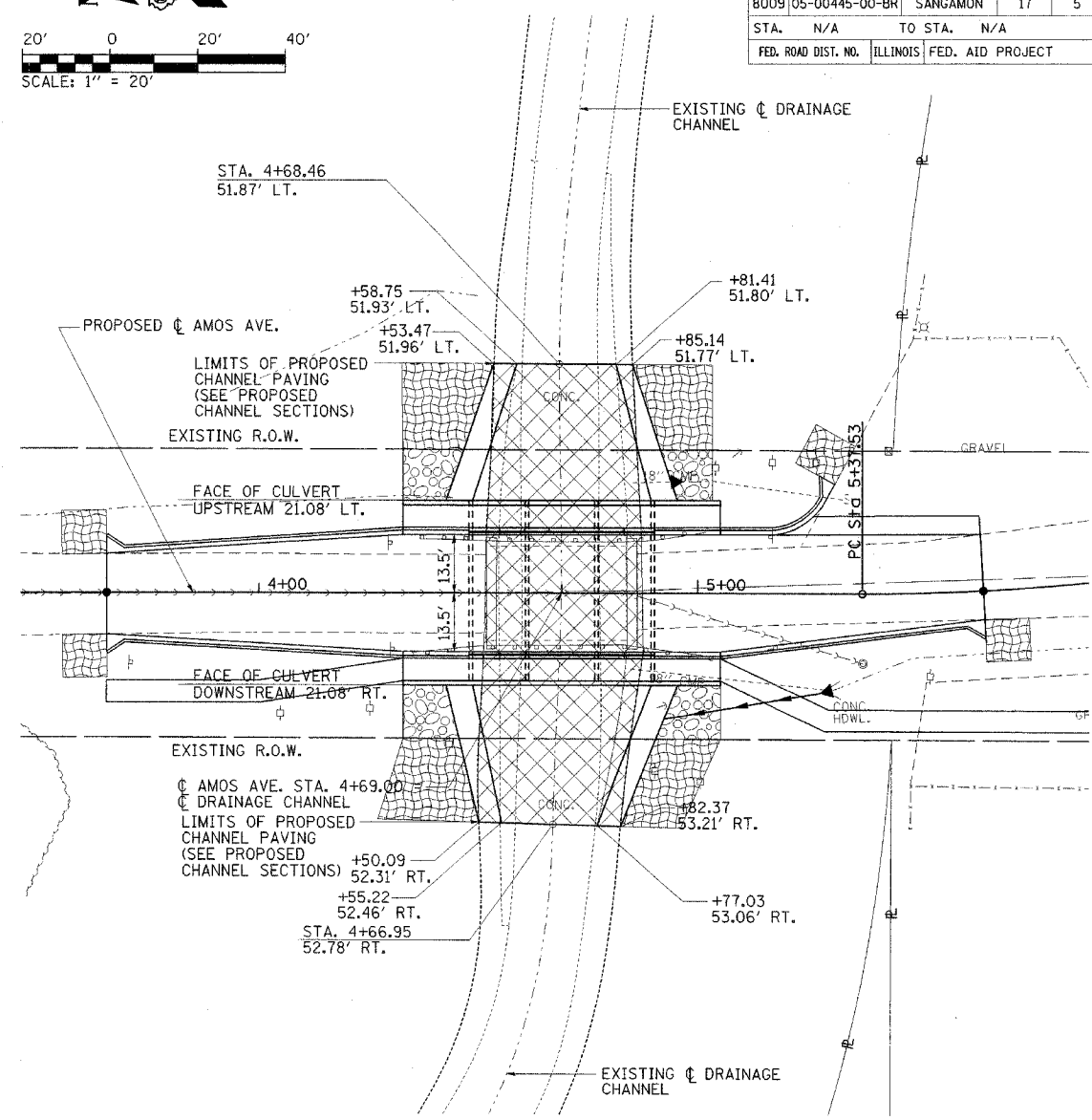
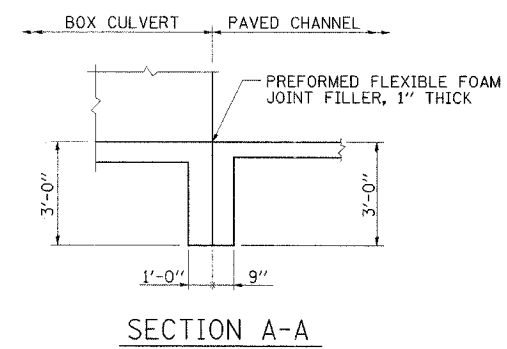
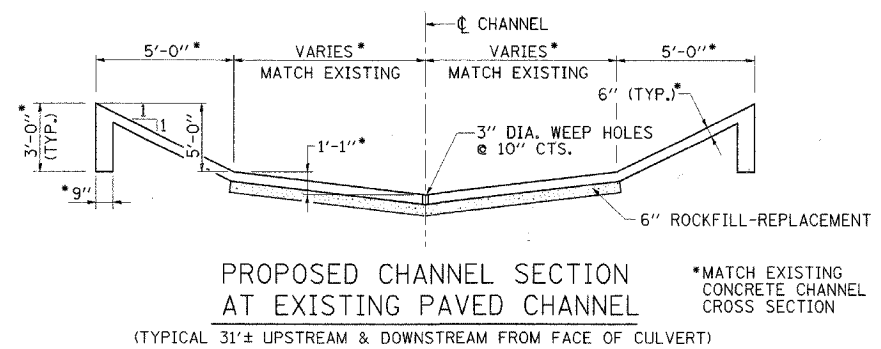


F.A.U. RTE.	SECTION	COUNTY	TOTAL SHEETS	SHEET NO.
8009	05-00445-00-BR	SANGAMON	17	5
STA. N/A	TO STA. N/A			
FED. ROAD DIST. NO.	ILLINOIS	FED. AID PROJECT		



DETAIL 1



LEGEND

	REMOVAL OF EXISTING CHANNEL PAVING
--	------------------------------------

PAVED DITCH REMOVAL	SQ. YD.	400
PAVED DITCH (SPECIAL)	FOOT	62

REVISIONS

NAME	DATE

CITY OF SPRINGFIELD, ILLINOIS

CHANNEL PAVING DETAILS

CMT
CRAWFORD MURPHY & TILLY, INC.
CONSULTING ENGINEERS
SPRINGFIELD, IL ■ AURORA, IL ■ ST. LOUIS, MO
ROCKFORD, IL ■ PEORIA, IL ■ CHICAGO, IL

SCALE: NONE
DATE: 5/26/06
DRAWN BY: GLD
CHECKED BY: GBR/SPH

L:\Springfield\050250\Draw\Sheets\Channel Pave Details.dgn 5/27/2006