

F.A. RTE.	SECTION	COUNTY	TOTAL SHEETS	SHEET NO.
05-00445-00-BR		SANGAMON	17	3
STA. 3+65.33		TO STA. 6+94.32		
FED. ROAD DIST. NO.		ILLINOIS	FED. AID PROJECT	

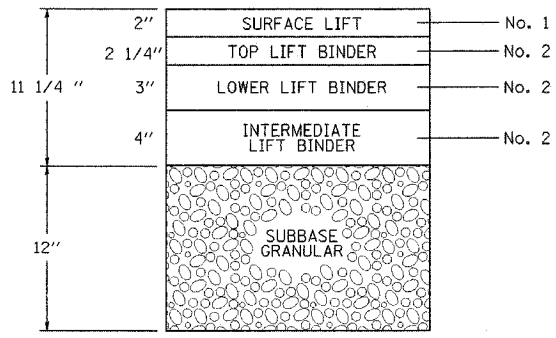
STRUCTURAL DESIGN INFORMATION (AMOS AVENUE)

DESIGN TRAFFIC (2016):
 P.V. = 3222 S.U. = 190 M.U. = 379
 T.F. = 1.678
 DESIGN STRAIN = 90 (MICROSTRAIN)
 E_{AC} = 535 ksi (AC-20)
 SSR : "POOR"

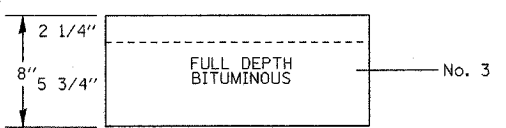
CONSTRUCT: BITUMINOUS CONCRETE PAVEMENT (FULL DEPTH), SUPERPAVE 11 1/4"

MIXTURE REQUIREMENTS

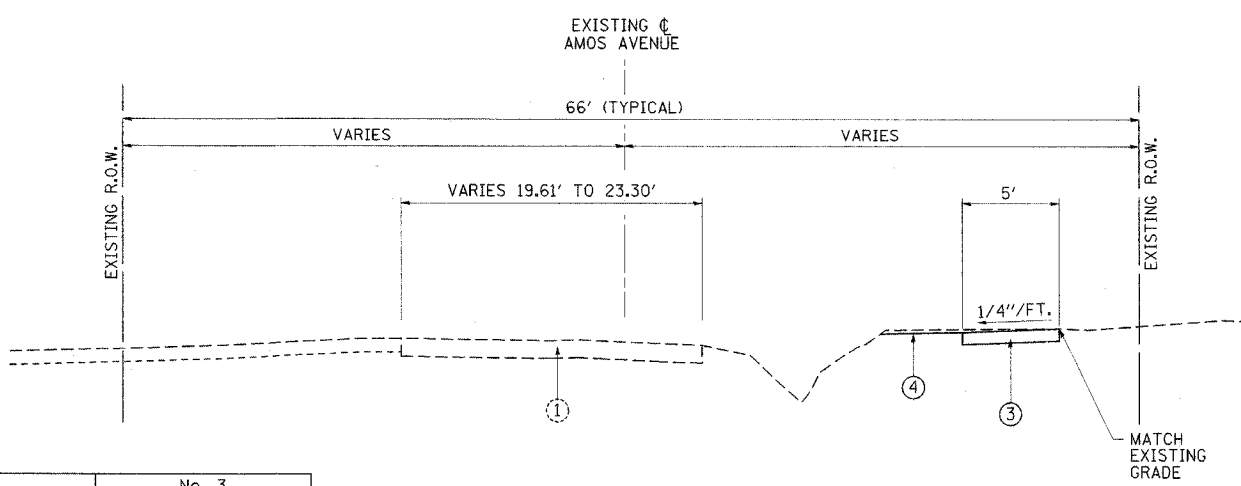
MIXTURE NUMBER:	No. 1	No. 2	No. 3
LOCATION(S):			
MIXTURE USE(S):	BITUMINOUS CONCRETE SURFACE LIFT	ALL BINDER LIFTS	BITUMINOUS SHOULDER
AC/PG:	PG 64-22	PG 64-22	PG 58-22
RAP % (MAX):	0%	15%	15%
DESIGN AIR VOIDS:	4.0% @ N _{design} = 50	4.0% @ N _{design} = 50	2.0% @ N _{design} = 30
MIXTURE COMPOSITION (GRADATION MIXTURE):	IL-9.5 OR IL-12.5	IL-19.0	BAM
FRICTION AGGREGATE:	MIX "C"	N/A	N/A



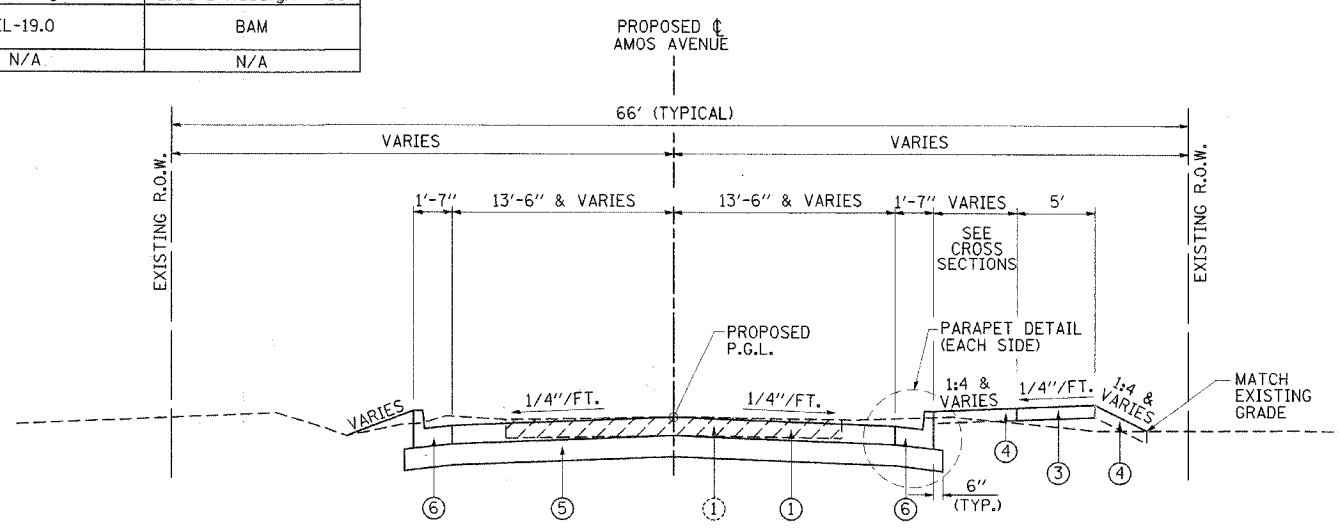
AMOS AVENUE BITUMINOUS LIFT DIAGRAM



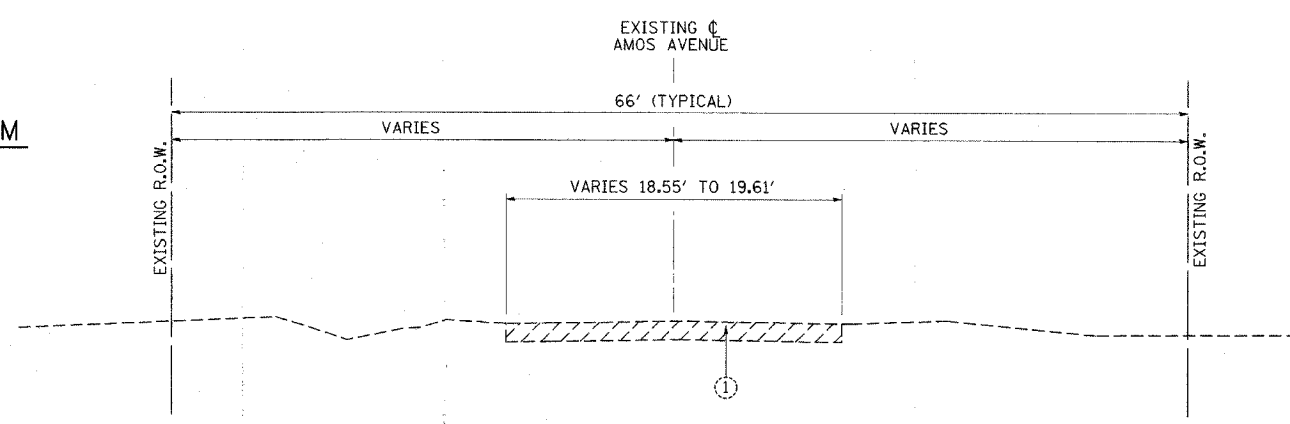
AMOS AVENUE SHOULDER LIFT DIAGRAM



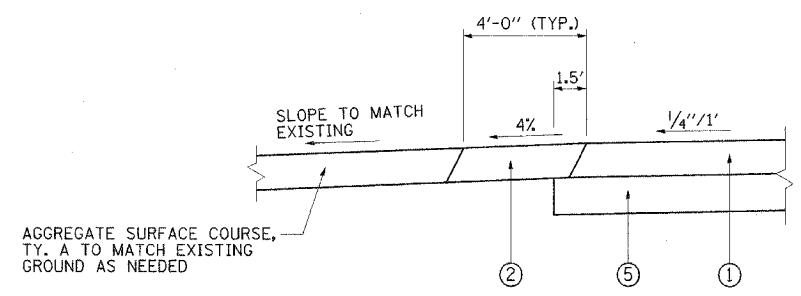
AMOS AVENUE - PROPOSED
 STA 5+65.18 TO STA 6+94.32



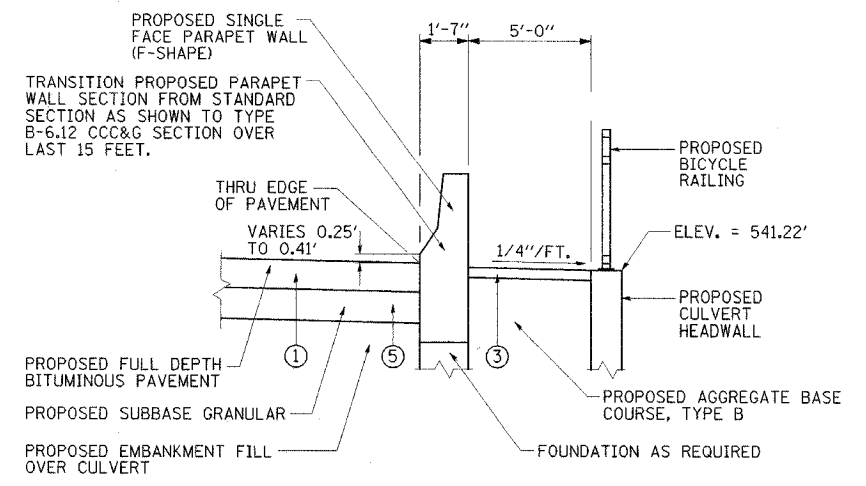
AMOS AVENUE - PROPOSED
 STA. 3+65.33 TO STA 5+65.18



AMOS AVENUE - EXISTING
 STA 3+65.33 TO STA 6+94.32
 (EXISTING BRIDGE OMISSION STA. 4+51.84 TO STA. 4+86.19)



SHOULDER DETAIL
 STA. 5+16.24, LT. TO STA 5+65.17, LT.



PARAPET DETAIL THRU CULVERT SECTION
 (SEE STRUCTURAL DETAILS)
 STA. 4+47.83 TO STA 4+90.17 RT. & LT.

- EXISTING LEGEND**
- ① EXISTING OIL & CHIP PAVEMENT WITH BITUMINOUS SURFACE TREATMENTS (TO BE REMOVED STA. 3+65.33 TO STA. 5+65.18 - COST INCLUDED IN EARTH EXCAVATION)

- PROPOSED LEGEND**
- ① PROP. BITUMINOUS CONCRETE PAVEMENT (FULL DEPTH), SUPERPAVE, 11-1/4"
 - ② PROP. BITUMINOUS SHOULDER, SUPERPAVE, 8"
 - ③ PROP. P.C.C. SIDEWALK, 4"
 - ④ PROP. SEEDING CLASS 2, WITH MULCH METHOD 2
 - ⑤ PROP. SUBBASE GRANULAR, TYPE B, 12"
 - ⑥ PROP. COMBINATION CONCRETE CURB AND GUTTER, TYPE B-6.12 (GUTTER FLAG 1 1/4" THICK)

REVISIONS	
NAME	DATE

ILLINOIS DEPARTMENT OF TRANSPORTATION

TYPICAL SECTIONS

SCALE: NONE
 DATE: 5/26/06

DRAWN BY: BJD
 CHECKED BY: SPH/JMM

PLOT DATE = 6/2/2006
 FILE NAME = 05-00445-00-BR
 PLOT SCALE = 1/8"=1'-0"
 REFERENCE = #REF#