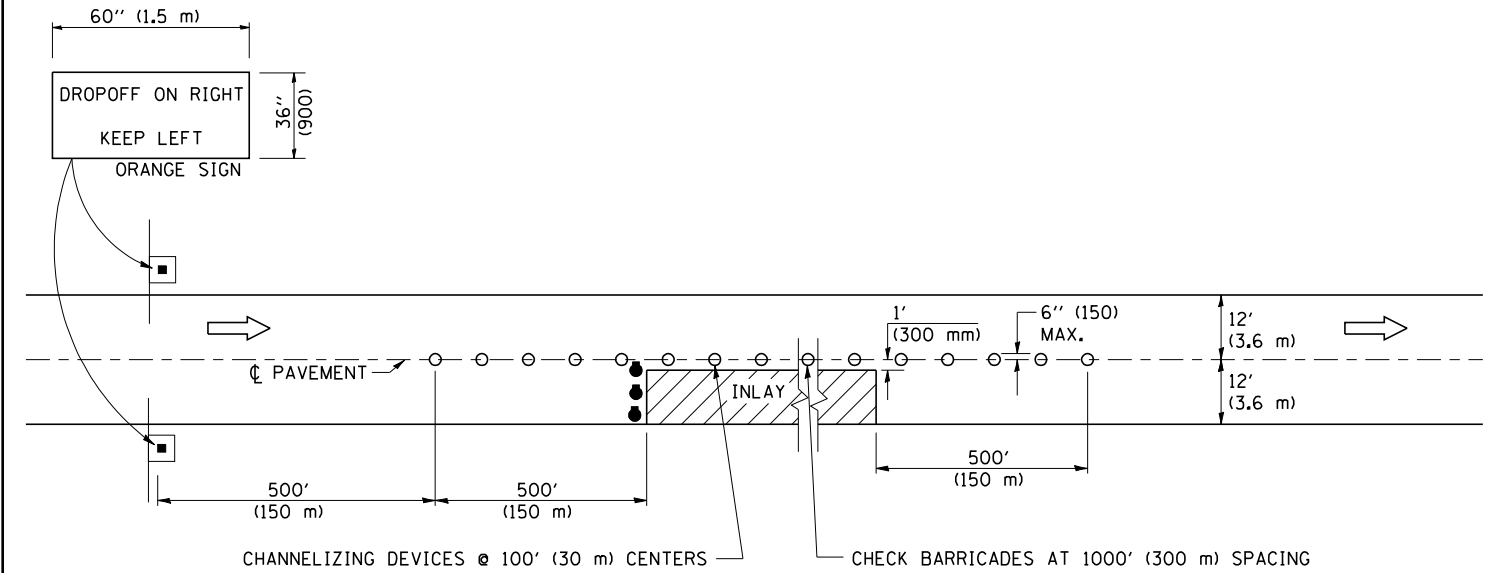


F.A.I. RTE.	SECTION	COUNTY	TOTAL SHEETS	SHEET NO.
72	(74-68)MRS	PIATT	10	10

## TRAFFIC CONTROL FOR INLAYS

DRIVING LANE INLAYS WITHIN STD. 701401 SET-UP



**NOTES:**

TRAFFIC CONTROL DETAILS NOT SHOWN SHALL BE ACCORDING TO TRAFFIC CONTROL STANDARD 701401.

AT RAMP, THE INLAY WORK AREA SHALL BE STAGED TO COORDINATE WITH STANDARD 701411. TEMPORARY RAMP THROUGH THE INLAY AREA TO MAINTAIN RAMP TRAFFIC IN LIEU OF STAGING WILL NOT BE ALLOWED.

THE DETAILS SHOWN ON THIS SHEET ARE TO SUPPLEMENT TRAFFIC CONTROL AND PROTECTION 701401. THESE ITEMS WILL NOT BE PAID FOR SEPARATELY BUT SHALL BE CONSIDERED AS INCLUDED IN THE CONTRACT UNIT PRICE PER LUMP SUM FOR TRAFFIC CONTROL AND PROTECTION 701401.

**SYMBOLS**

- DIRECTION OF TRAVEL
- DRUMS WITH FLASHING LIGHTS
- 42" (1.07 m) HIGH INTENSITY REFLECTORIZED CONE, DRUMS OR VERTICAL BARRICADES

ALL DIMENSIONS ARE IN INCHES (MILLIMETERS) UNLESS OTHERWISE SHOWN.