

F.A.U. RTE.	SECTION	COUNTY	TOTAL SHEETS	SHEET NO.
2710	(1213&3219)RS-7	COOK	22	1

STATE OF ILLINOIS
DEPARTMENT OF TRANSPORTATION
DIVISION OF HIGHWAYS

**PROPOSED
HIGHWAY PLANS**

FAU ROUTE 2710: DES PLAINES RIVER ROAD
FROM US 12 (RAND ROAD) TO US 14 (DEMPSTER STREET)
AND FROM KENNICOTT CT TO DEVON AVE.
SECTION (1213 & 3219) RS-7
PATCHING AND RESURFACING
COOK COUNTY
C-91-322-06

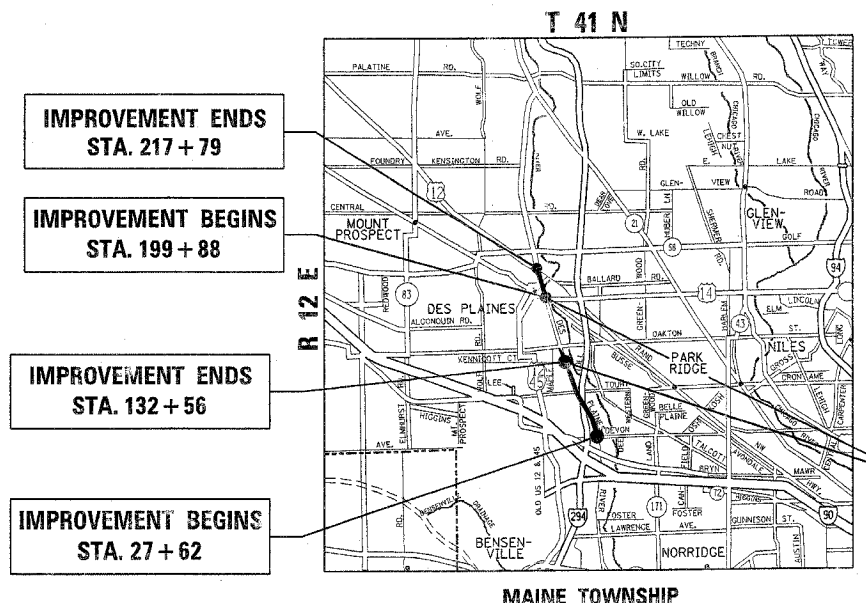
FOR INDEX OF SHEETS, SEE SHEET NO. 2

D-91-322-06



LOCATION OF SECTION INDICATED THUS: - [black rectangle] -

PROJECT LOCATED IN THE CITY OF DES PLAINES



- IMPROVEMENT ENDS
STA. 217 + 79
- IMPROVEMENT BEGINS
STA. 199 + 88
- IMPROVEMENT ENDS
STA. 132 + 56
- IMPROVEMENT BEGINS
STA. 27 + 62

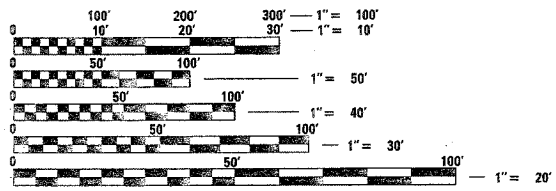


TRAFFIC DATA

2004 ADT = 19,700 - 24,600
SPEED LIMIT = 35 - 40 MPH

OMISSION
STA. 132 + 56 TO STA. 199 + 88

GROSS LENGTH OF IMPROVEMENT: 19,017 FEET = 3.60 MILES
NET LENGTH OF IMPROVEMENT: 12,285 FEET = 2.33 MILES



FULL SIZE PLANS HAVE BEEN PREPARED USING STANDARD ENGINEERING SCALES. REDUCED SIZED PLANS WILL NOT CONFORM TO STANDARD SCALES. IN MAKING MEASUREMENTS ON REDUCED PLANS, THE ABOVE SCALES MAY BE USED.

J.U.L.I.E.
JOINT UTILITY LOCATION INFORMATION FOR EXCAVATION
1-800-892-0123

STATE OF ILLINOIS
DEPARTMENT OF TRANSPORTATION
DIVISION OF HIGHWAYS

SUBMITTED June 5, 2006
Diane M. O'Keefe
DEPUTY DIRECTOR OF HIGHWAYS, REGION ENGINEER

June 30, 2006
Michelle Hine
ENGINEER OF DESIGN AND ENVIRONMENT

June 30, 2006
Milton R. Seas, P.E.
DIRECTOR OF HIGHWAYS, CHIEF ENGINEER

PRINTED BY THE AUTHORITY
OF THE STATE OF ILLINOIS

DISTRICT ONE - DESIGN - PLAN PREPARATION ENGINEER: KEN ENG / ROBERT BORO (847) 705-4178