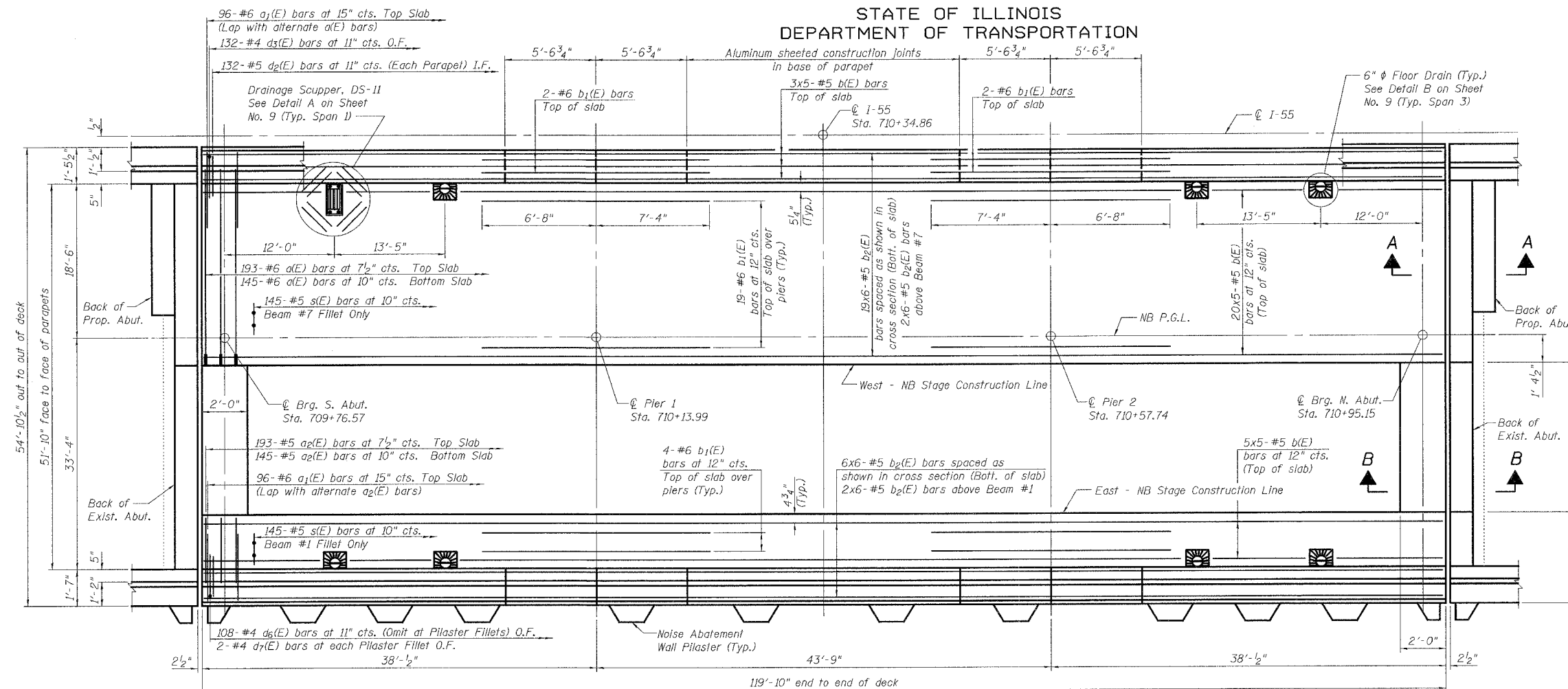


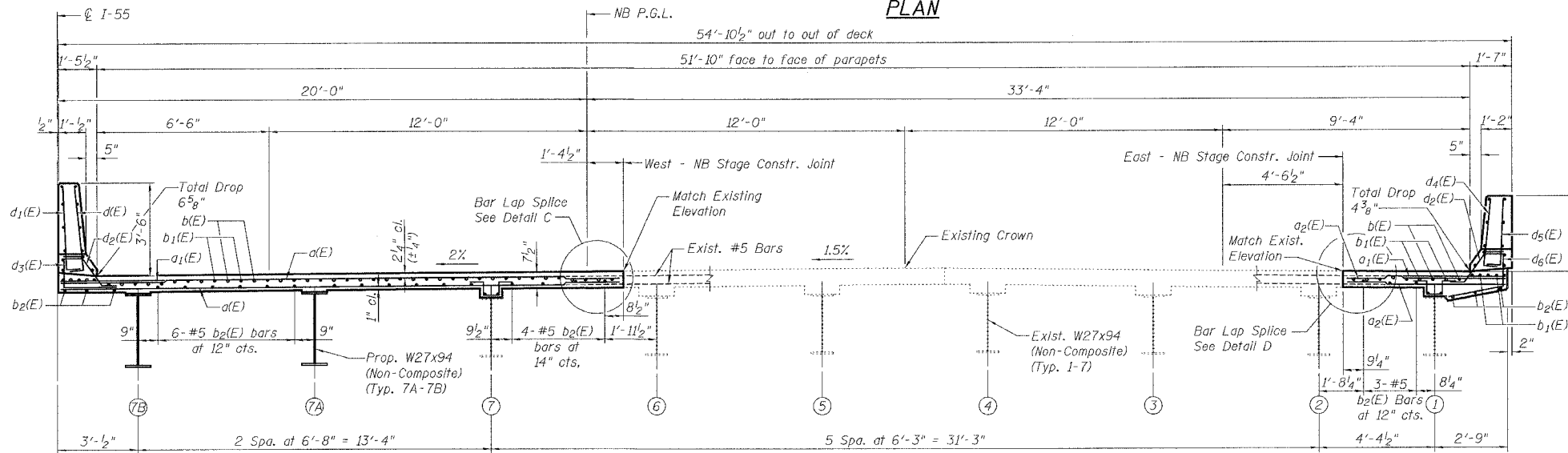
STATE OF ILLINOIS
DEPARTMENT OF TRANSPORTATION

ROUTE NO.	SECTION	COUNTY	DATE	SHEET	SHEET NO. 12
FAI-55	**	WILL	50	49	13 SHEETS
FED. ROAD DIST. NO. 7	ILLINOIS	FED. AID PROJECT-			

** SECTION 2005-063 I
CONTRACT NO. 60A67



PLAN



CROSS SECTION
(Looking North)

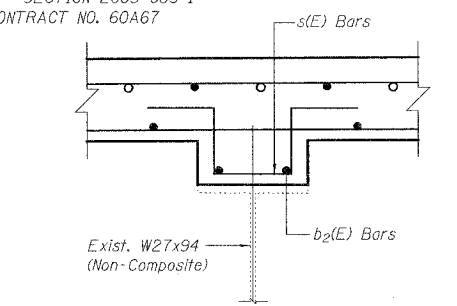
Notes:

1. See Sheet No. 10 for superstructure details and Bill of Material.
2. See Sheet Nos. 9 & 10 for parapet reinforcement.
3. Reinforcement bars designated (E) shall be epoxy coated.
4. Bars indicated thus 19 x 6-#5 etc. Indicates 19 lines of bars with 6 lengths per line.
5. Work this sheet with Sheet Nos. 8, 9 & 10.

DESIGNED	S.CHELBIAN
CHECKED	J.GRAINAWI
DRAWN	S.CHELBIAN
CHECKED	J.GRAINAWI

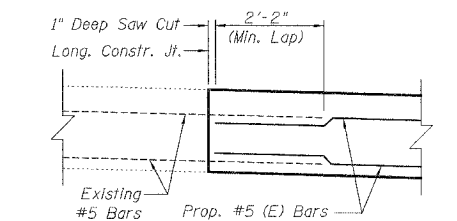
Date: 5/15/2006

FOR INFORMATION ONLY



FILLET REINFORCEMENT DETAIL

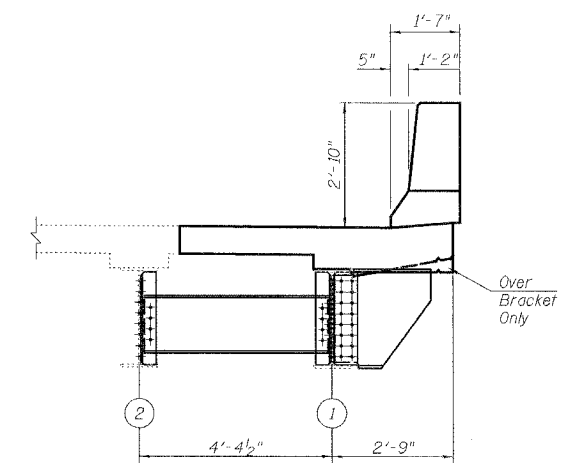
(New Deck At Existing Beam Locations)
(At SB Beam 7 and NB Beams 1 & 7 where fillet exceeds 4")



DETAIL D

Note:

Remove existing concrete to expose a minimum of 2'-2" of the existing top and bottom bars.



DETAIL E

NB DECK PLAN & SECTION
I-55 OVER MS (ABANDONED) R.R.
FAI ROUTE 55-SEC. 2005-063 I
WILL COUNTY
STA. 710+34.86
STRUCTURE NO. 099-0022 (NB)