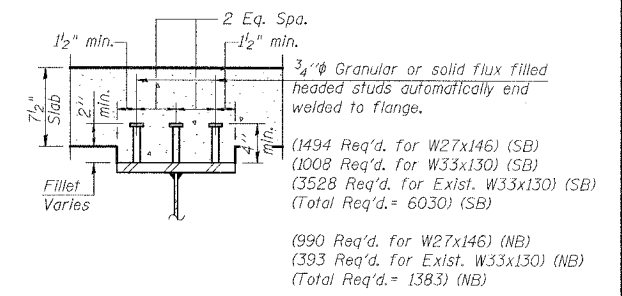


STATE OF ILLINOIS  
DEPARTMENT OF TRANSPORTATION

ROUTE NO.	SECTION	COUNTY	SHEET	SHEET NO.
FAI-55	**	WILL	50	29
FED. ROAD DIST. NO. 7	ILLINOIS	FED. AID PROJECT NO.		

\*\* SECTION 2005-063 I  
CONTRACT NO. 60A67

- Notes:
- All plates except for fill plates shall conform to N.T.R..
  - N.T.R. denotes members subject to the supplemental requirements for notch toughness (Zone 2).
  - All work shall be performed after existing concrete has been removed.
  - See Sheets 8 & 9 for Beam Elevations, Sections and Details.



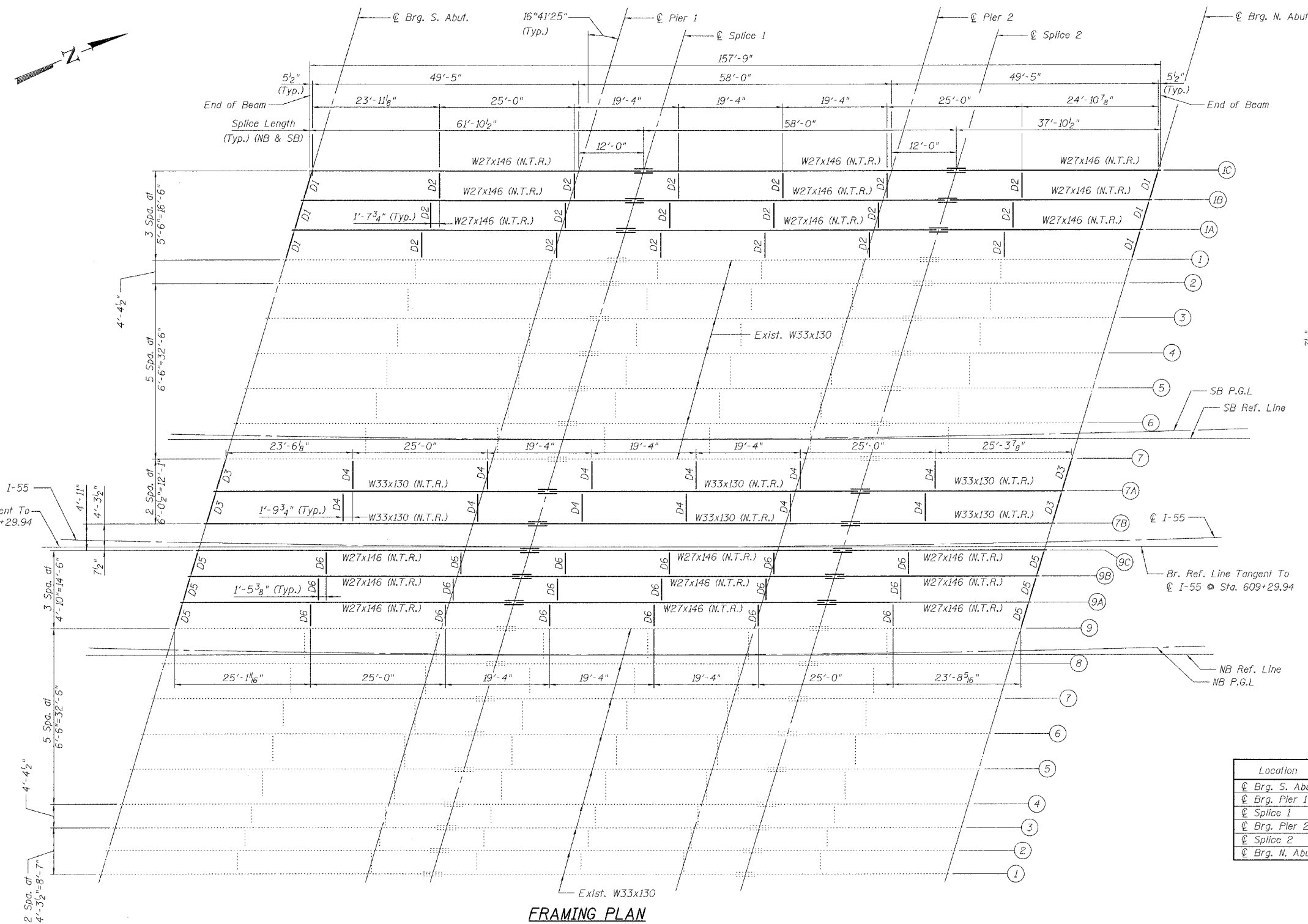
SECTION A-A  
(For Information Only)

TOP OF BEAM ELEVATIONS (N.B.)  
(FOR FABRICATION ONLY)

Location	Beam 9A	Beam 9B	Beam 9C
⊕ Brg. S. Abut.	637.618	637.529	637.440
⊕ Brg. Pier 1	637.786	637.695	637.604
⊕ Splice 1	637.827	637.736	637.644
⊕ Brg. Pier 2	637.949	637.856	637.762
⊕ Splice 2	637.981	637.887	637.793
⊕ Brg. N. Abut.	638.101	638.005	637.908

TOP OF BEAM ELEVATIONS (S.B.)  
(FOR FABRICATION ONLY)

Location	Beam 1A	Beam 1B	Beam 1C	Beam 7A	Beam 7B
⊕ Brg. S. Abut.	637.640	637.538	637.436	638.534	638.645
⊕ Brg. Pier 1	637.777	637.673	637.568	638.668	638.782
⊕ Splice 1	637.810	637.705	637.600	638.701	638.815
⊕ Brg. Pier 2	637.899	637.792	637.684	638.813	638.931
⊕ Splice 2	637.922	637.814	637.705	638.842	638.961
⊕ Brg. N. Abut.	638.013	637.902	637.791	638.985	639.105



FRAMING PLAN

BEAM SEAT ELEVATIONS (NB)  
(FOR INFORMATION ONLY)

Location	Beam 9A	Beam 9B	Beam 9C
⊕ Brg. S. Abut.	635.00	634.91	634.83
⊕ Brg. Pier 1	635.21	635.12	635.03
⊕ Brg. Pier 2	635.24	635.14	635.05
⊕ Brg. N. Abut.	635.29	635.20	635.10

BEAM SEAT ELEVATIONS (SB)  
(FOR INFORMATION ONLY)

Location	Beam 1A	Beam 1B	Beam 1C	Beam 7A	Beam 7B
⊕ Brg. S. Abut.	635.02	634.92	634.82	635.44	635.55
⊕ Brg. Pier 1	635.19	635.09	634.98	635.61	635.72
⊕ Brg. Pier 2	634.36	634.25	634.14	634.84	634.95
⊕ Brg. N. Abut.	635.20	635.09	634.98	635.70	635.82

DESIGNED	J.ZUO
CHECKED	A.HAMMAD
DRAWN	Z.MORILLO
CHECKED	J.GRAINAWI

Date: 5/15/2006

FRAMING PLAN  
I-55 OVER EJ&E R.R.  
FAI ROUTE 55-SEC. 2005-063 I  
WILL COUNTY  
STA. 609+29.37  
STRUCTURE NO. 099-0018 (NB)  
STRUCTURE NO. 099-0019 (SB)

