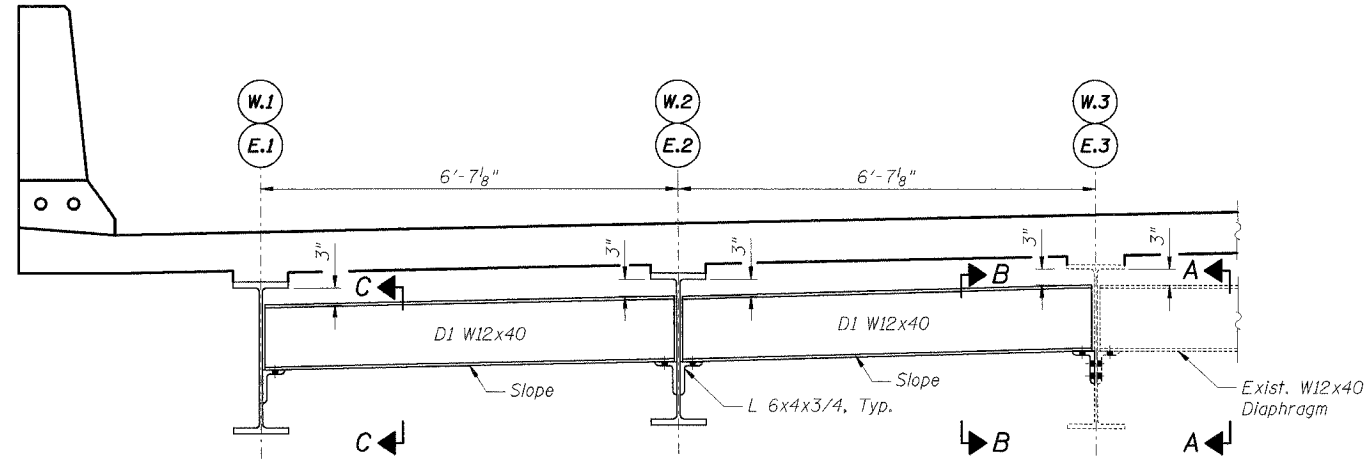
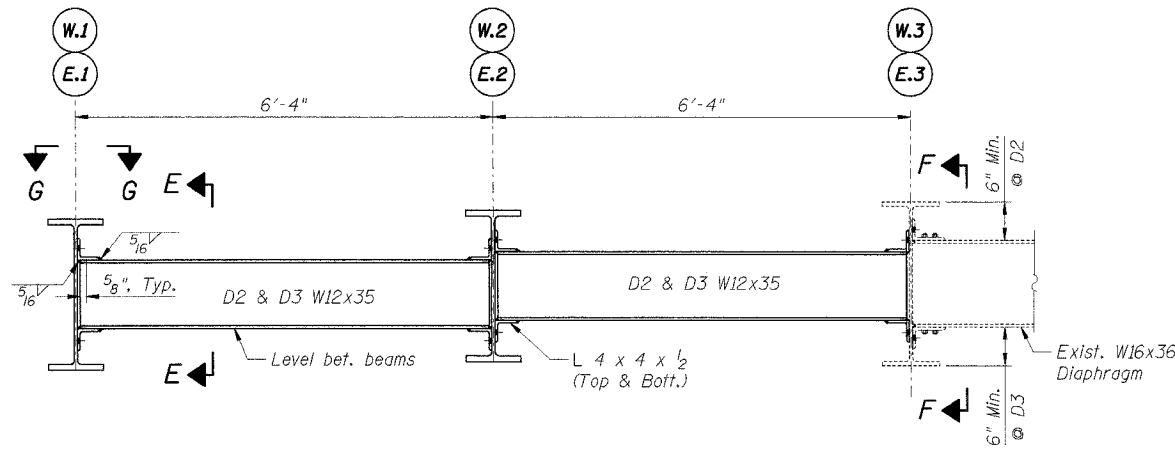


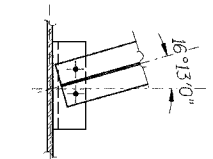
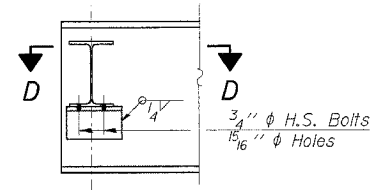
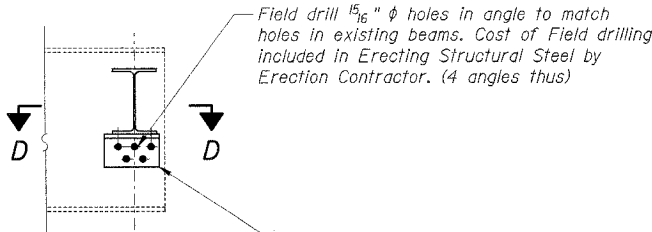
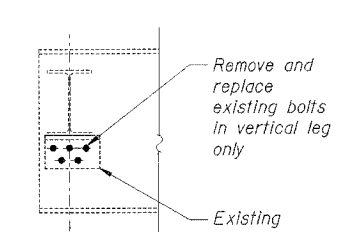
F.A.I. RTE.	SECTION	COUNTY	TOTAL SHEETS	SHEET NO.
55	2005-063 I	WILL	50	20
STA.		TO STA.		
FED. ROAD DIST. NO.	ILLINOIS	FED. AID PROJECT		



END DIAPHRAGM D1
(8 Required)

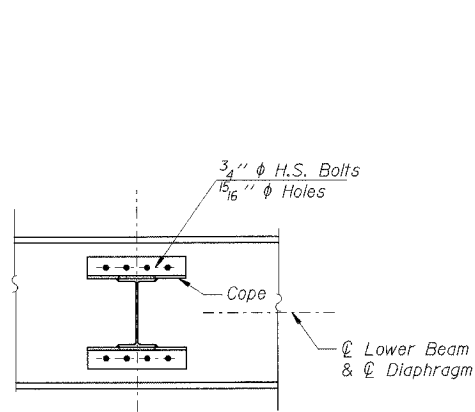


INTERIOR DIAPHRAGM D2 & D3
(D2 - 24 Required)
(D3 - 12 Required)

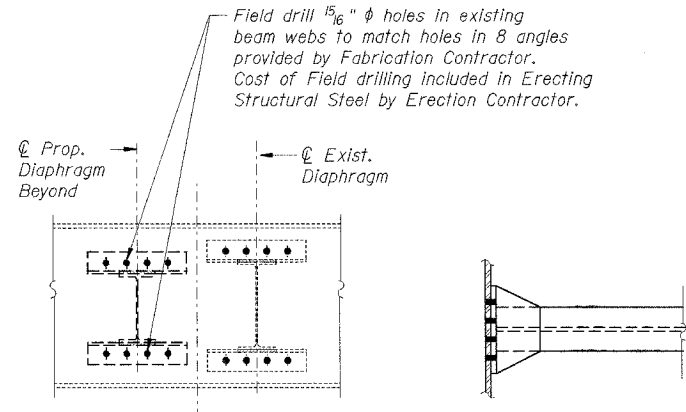


SECTION C-C
(At beams E.1, E.2, W.1 & W.2)

SECTION D-D



SECTION E-E



SECTION F-F

SECTION G-G

Note:
1. Two hardened washers shall be required over all oversize holes for diaphragms.

SHT. SC-21 OF 38

REVISIONS	
NAME	DATE

ILLINOIS DEPARTMENT OF TRANSPORTATION
FAI ROUTE 55 (I-80 TO WEBER ROAD)
BEAM AND BEARING FABRICATION
SB & NB I-55 OVER US RTE. 30, S.N. 099-0016 & 099-0017
STA. 587+80.82, SECTION 2005-063 I
WILL COUNTY

DIAPHRAGM DETAILS

SCALE: DRAWN BY PA
DATE 05/19/06 CHECKED BY MJK

MORCOM, N.V., INC.
CONSULTING ENGINEERS
CHICAGO, ILLINOIS

TENG
TENG & ASSOCIATES, INC.
ENGINEERS/ARCHITECTS/PLANNERS
CHICAGO, ILLINOIS

PLOT DATE = DATE
 FILE NAME = FILE
 USER NAME = USER
 S:\DOCUMENTS\2005\063\STRUCT\WORK\FR0210623.DWG
 5/17/2006, 10:17:22 AM
 ANANTH
 ANANTH