

F.A.I. RTE.	SECTION	COUNTY	TOTAL SHEETS	SHEET NO.
55	2005-063 I	WILL	50	11
STA.		TO STA.		
FED. ROAD DIST. NO.		ILLINOIS FED. AID PROJECT		

BENCHMARKS:

BM 3191 Square cut on northwest edge of 2 foot diameter concrete light pole base #MC2 on south side Route 30 and about 400 feet northwest of I-55. El. 607.08

EXISTING STRUCTURES:

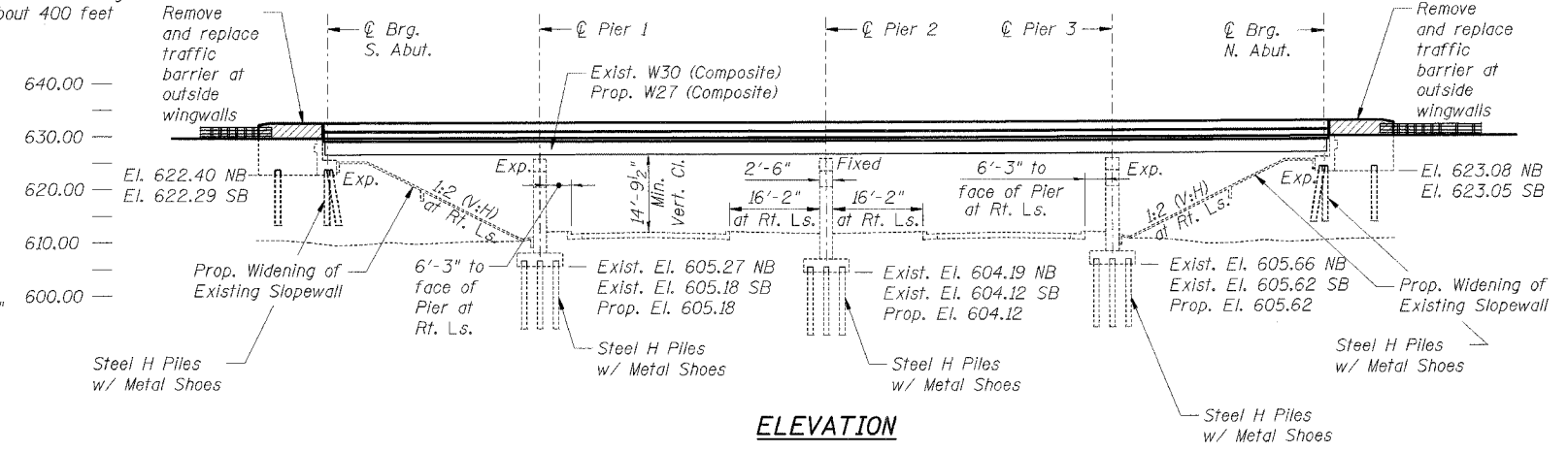
Existing Bridges No. 099-0016 Southbound Bridge at Sta. 587+71.51 (© SB Exist.) and No. 099-0017 Northbound Bridge at Sta. 587+90.13 (© NB Exist.) F.A.I.-55 were built in 1955 as F.A. Route 34 - Project IN-187(9), Section 27HB, widened in 1977 as U.S.30 - Project I-55-6 I-55-6(123)246 Section (99-182)R-5. In 1994, the concrete deck was scarified 1/4" and resurfaced and the superstructure was rehabilitated as F.A.I. Section 27HB-BR(89). They are 4-span continuous non-composite wide flange beam bridges with a 6 3/4" concrete deck slab and 2" overlay, 41'-10" out-to-out of structure and 191'-0" Back-to-Back Abutments.

SALVAGE:

None.

STAGING:

Traffic to be maintained utilizing stage construction.



ELEVATION

DESIGN SPECIFICATIONS:

AASHTO Standard Specifications for Highway Bridges, 17th Edition, 2002

DESIGN LOADING:

HS20-44 and Alt. Military Loading
Future Wearing Surface = 50 psf

DESIGN STRESSES:

New Construction:

Concrete - f'c = 3,500 psi
Reinforcement - fy = 60,000 psi
Structural Steel - fy = 50,000 psi (M270, Gr 50)

Existing Construction:

1955 Construction (Original):

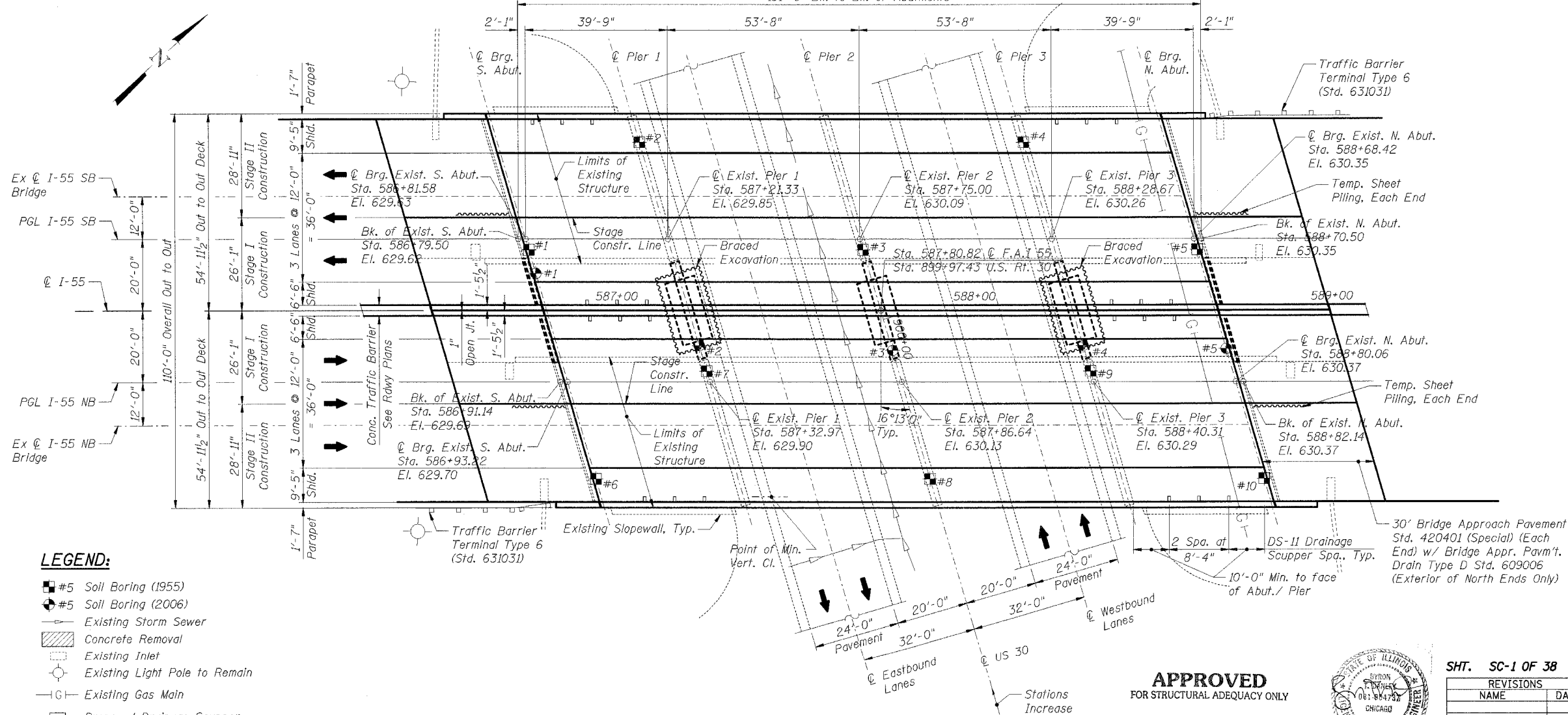
fs Structural Steel = 18,000 psi
fs Reinforcing Steel = 20,000 psi
fc Concrete = 800 psi (Abutments)
fc Concrete = 1200 psi (Piers)

1977 Construction (Widening):

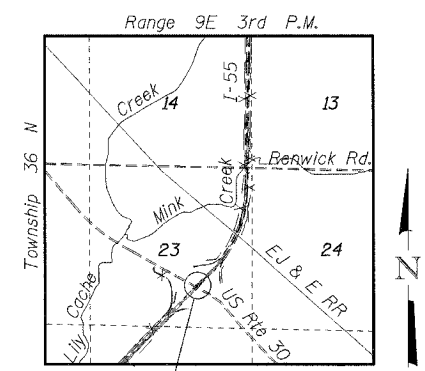
fs Structural Steel = 20,000 psi
fs Reinforcing Steel = 20,000 psi
fc Concrete = 1400 psi (Substructure)

SEISMIC DATA:

Seismic Performance Category (SPC) = A
Bedrock Acceleration Coefficient (A) = 0.04g
Site Coefficient (S) = 1.0



PLAN



LOCATION MAP

Notes:
1. For PGL of US 30 and I-55, See Sht. SC-2.

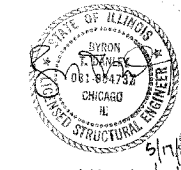
ILLINOIS DEPARTMENT OF TRANSPORTATION
FAI ROUTE 55 (I-80 TO WEBER ROAD)
BEAM AND BEARING FABRICATION
SB & NB I-55 OVER US RTE. 30, S.N. 099-0016 & 099-0017
STA. 587+80.82, SECTION 2005-063 I
WILL COUNTY

GENERAL PLAN & ELEVATION

SCALE: DATE 05/19/2006 DRAWN BY PA CHECKED BY MJK
TENG TENG & ASSOCIATES, INC.
ENGINEERS/ARCHITECTS/PLANNERS
CHICAGO, ILLINOIS

APPROVED
FOR STRUCTURAL ADEQUACY ONLY

Robert E. Anderson
ENGINEER OF BRIDGES AND STRUCTURES



MORCOM, N.V., INC.
CONSULTING ENGINEERS
CHICAGO, ILLINOIS

SHT. SC-1 OF 38

REVISIONS	
NAME	DATE

PLOT DATE = 05/19/2006
FILE NAME = #FILE#
PLOT SCALE = #SCALE#
USER NAME = #USER#
S:\DOCUMENT\2005\10\STRUCT\DRG\SC-1.DWG
5/19/2006 10:25:53
E:\BUDMWD