

STATE OF ILLINOIS
DEPARTMENT OF TRANSPORTATION

F.A.I. RTE.	SECTION	COUNTY	TOTAL SHEETS	SHEET NO.
57	D9 DECK SEAL 2018-2	ALEXANDER	5	1
ILLINOIS			CONTRACT NO. 78634	

FOR INDEX OF SHEETS, SEE SHEET NO. 2
FOR SUMMARY OF QUANTITIES, SEE SHEET NO. 3
FOR STRUCTURAL PAVEMENT DESIGN INFORMATION, SEE SHEET NO. N/A

**PROPOSED
HIGHWAY PLANS**

F.A.I. ROUTE 57 (I-57)
SECTION D9 DECK SEAL 2018-2
PROJECT NHPP-5GH1(693)
DECK SEALING
ALEXANDER COUNTY

C-99-049-18

TRAFFIC DATA

2017 ADT = 12,500
45 % TRUCKS

TOWNSHIPS

COUNTY UNIT ROAD DISTRICT 01

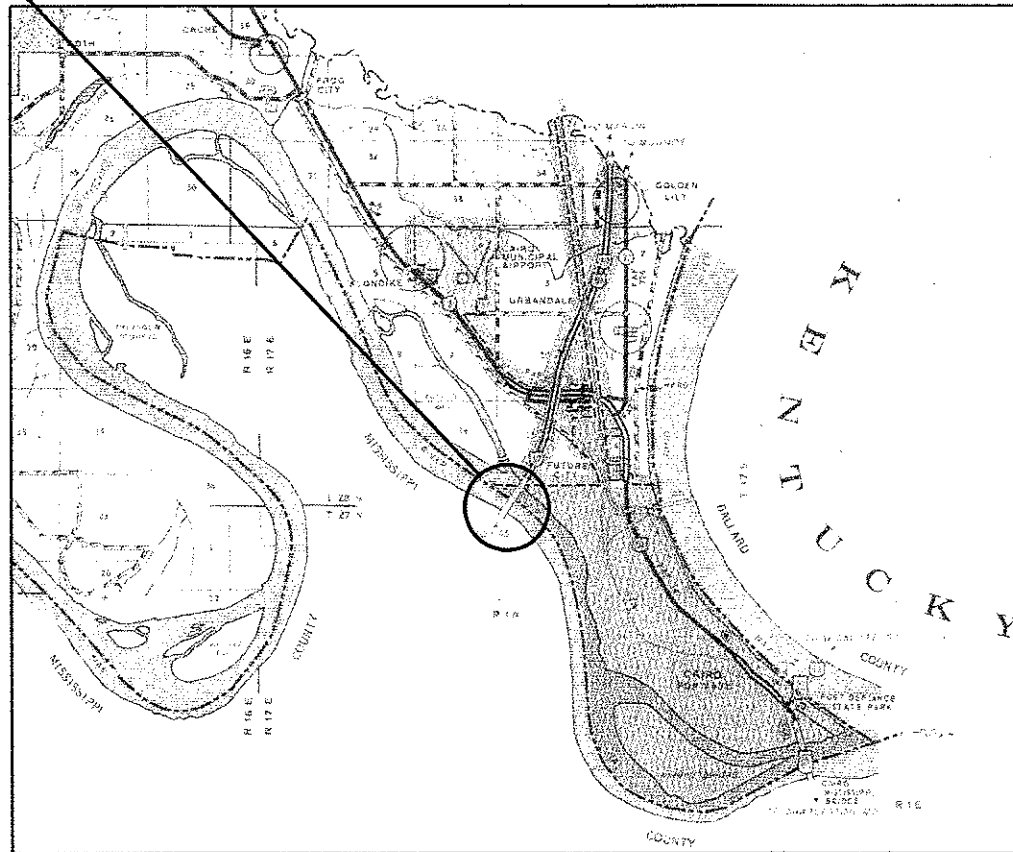
DESIGN DESIGNATION : N/A
COORDINATE SYSTEM : N/A
POSTED SPEED : 70 MPH

J.U.L.I.E.
JOINT UTILITY LOCATION INFORMATION FOR EXCAVATION
1-800-892-0123
OR 811

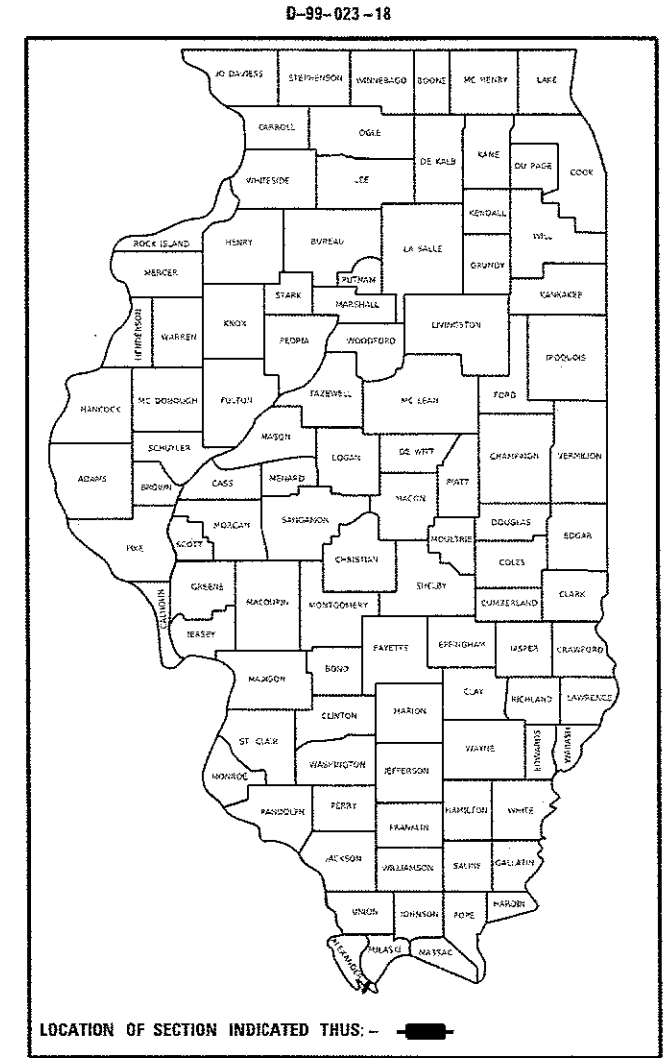
PROJECT ENGINEER: DAVID PICHE 618-351-5227
PROJECT DESIGNER: BILL PORTER 618-351-5224

CONTRACT NO. 78634

EXISTING STRUCTURE NO. 002-0022
FAI 57 (I-57 NB & SB)



GROSS LENGTH = 4090.5 FT. = 0.78 MILES
NET LENGTH = 4090.5 FT. = 0.78 MILES



LOCATION OF SECTION INDICATED THUS: - [shaded area] -



STATE OF ILLINOIS
DEPARTMENT OF TRANSPORTATION

SUBMITTED May 7 20 18
Jeffrey Z. Kiern
REGION FIVE ENGINEER
June 29 20 18
EA. EK
ENGINEER OF DESIGN AND ENVIRONMENT
June 29 20 18
David P. Piche
DIRECTOR OF HIGHWAYS PROJECT IMPLEMENTATION

**PRINTED BY THE AUTHORITY
OF THE STATE OF ILLINOIS**

GENERAL NOTES

1) COMMITMENTS: NONE AS OF MAY 11, 2018.

INDEX OF SHEETS

- 1 COVER SHEET
- 2 INDEX OF SHEETS, GENERAL NOTES, STANDARDS
- 3 SUMMARY OF QUANTITIES
- 4 GENERAL PLAN AND ELEVATION
- 5 STAGING DETAILS

STANDARDS

- 000001-06 STANDARD SYMBOLS, ABBREVIATIONS AND PATTERNS
- 701101-05 OFF-ROAD, MULTILANE 15' TO PAVEMENT EDGE
- 701106-02 OFF-ROAD, MULTILANE MORE THAN 15' AWAY
- 701400-09 APPROACH TO LANE CLOSURE FREEWAY/EXPRESSWAY
- 701406-11 LANE CLOSURE FREEWAY/EXPRESSWAY, DAY OPERATIONS ONLY
- 701901-07 TRAFFIC CONTROL DEVICES

Prepared By: _____
 DISTRICT STUDIES & PLANS ENGINEER

Examined By: *Nanette*
 DISTRICT LAND ACQUISITION ENGINEER

Examined By: *Con Nelson*
 DISTRICT PROGRAM DEVELOPMENT ENGINEER

Examined By: *Keel*
 DISTRICT OPERATIONS ENGINEER

Examined By: *KP*
 DISTRICT PROJECT IMPLEMENTATION ENGINEER

Examined By: *Doug*
 DISTRICT CONSTRUCTION ENGINEER

Examined By: *R*
 DISTRICT MATERIALS ENGINEER

MODEL: Default
 FILE NAME: p:\11094\FID\INTEC, Illinois.gov\PWIDOT\Documents\11007_Offices\District_9\Projects\78634\CADD\Drawn\CAD\Sheets\SD78634-Sheets.dgn

USER NAME = porterc	DESIGNED -	REVISED -
PLOT SCALE = 100.0000" / in.	DRAWN -	REVISED -
PLOT DATE = 4/30/2018	CHECKED -	REVISED -
	DATE -	REVISED -

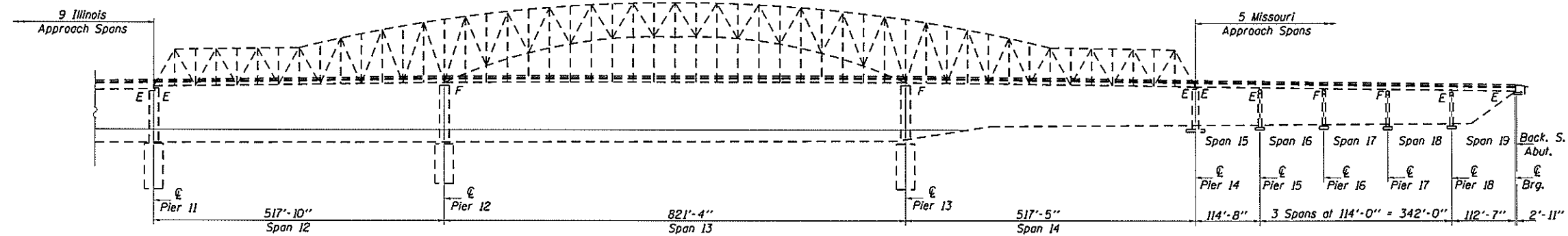
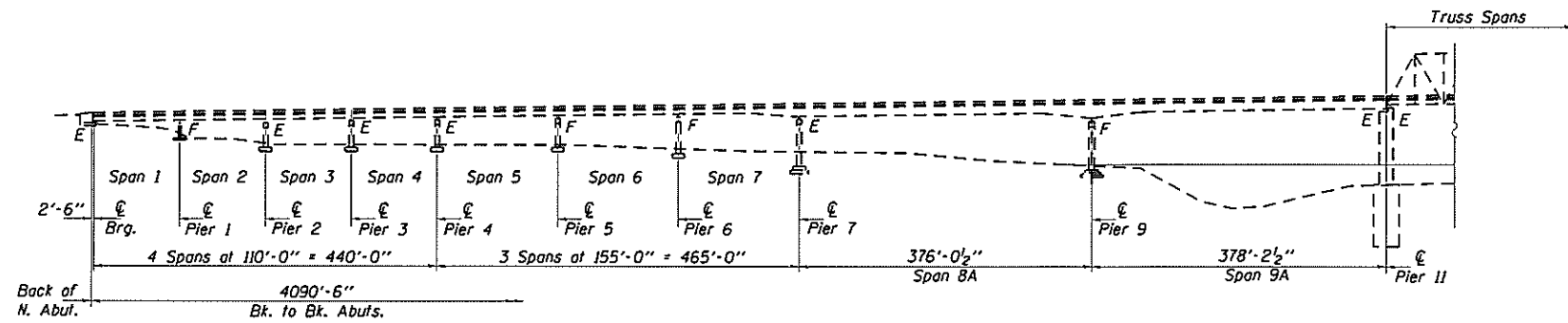
STATE OF ILLINOIS
 DEPARTMENT OF TRANSPORTATION

GENERAL NOTES, INDEX OF SHEETS
 AND STANDARDS

SCALE: SHEET OF SHEETS STA. TO STA.

F.A.I. RTE.	SECTION	COUNTY	TOTAL SHEETS	SHEET NO.
57	D9 DECK SEAL 2018-2	ALEXANDER	5	2
				CONTRACT NO. 78634
ILLINOIS FED. AID PROJECT				

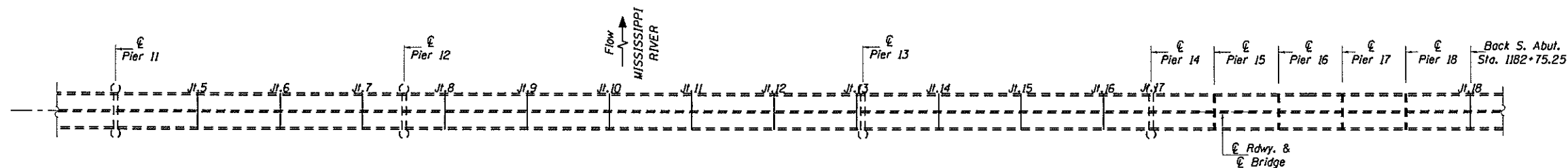
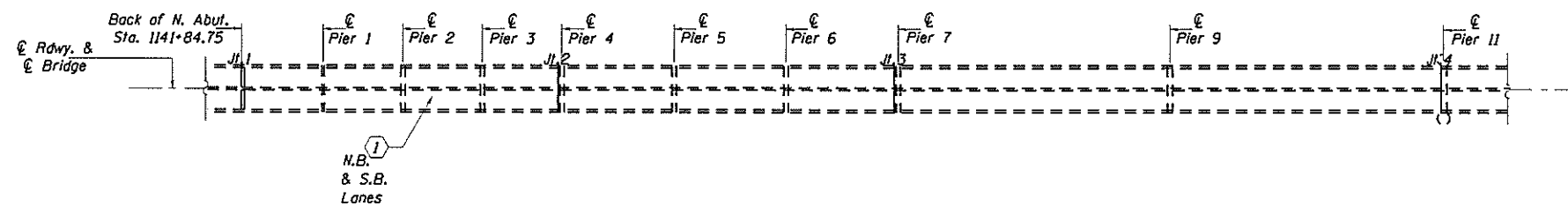
STATE OF ILLINOIS
DEPARTMENT OF TRANSPORTATION



ELEVATION
(Looking East)

BILL OF MATERIAL

ITEM	UNIT	QUANTITY
Bridge Deck Concrete Sealer	Sq. Ft.	32,718

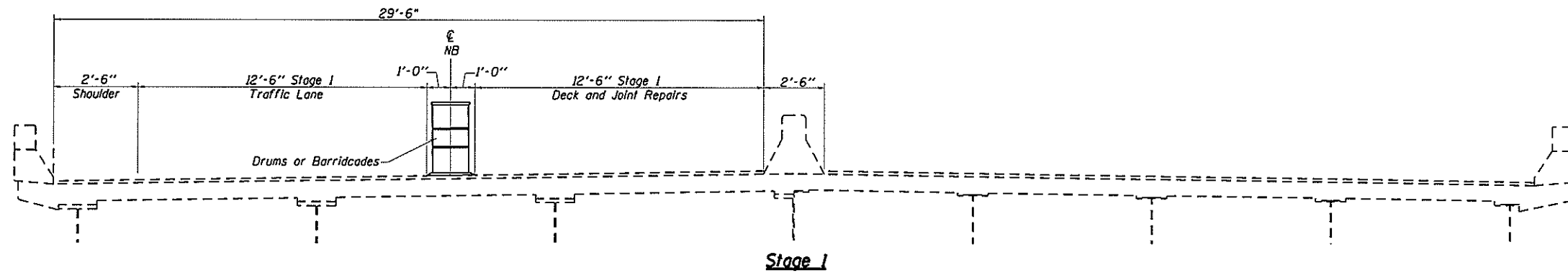


PLAN

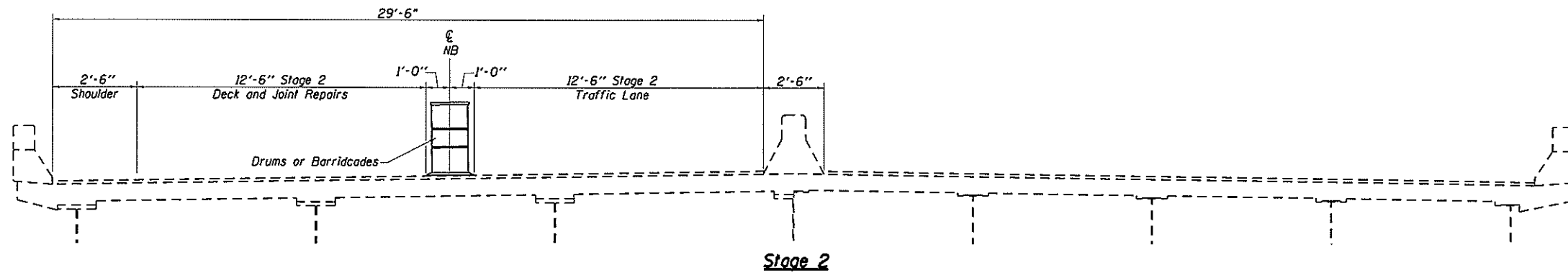
**GENERAL PLAN
AND ELEVATION
BRIDGE REPAIRS
F.A.I. 57 OVER MISSISSIPPI RIVER
SEC. D9 DECK SEAL 2018-2
ALEXANDER COUNTY
S.N. 002-0022**

FILE NAME =	USER NAME = porterc	DESIGNED -	REVISED -	STATE OF ILLINOIS DEPARTMENT OF TRANSPORTATION	GENERAL PLAN AND ELEVATION	F.A.I. RTE.	SECTION	COUNTY	TOTAL SHEETS	SHEET NO.	
path: \\L084EBID\INTEG.illinois.gov\PK100T\Do	uments\DDOT Offices\District 9\Projects\786	DRAWN to\CAB\sheats\0978634-Sheats.dgn	REVISED -			57	D9 DECK SEAL 2018-2	ALEXANDER	5	4	
	PLOT SCALE = 100.0000 / in.	CHECKED -	REVISED -			CONTRACT NO. 78634					
	PLOT DATE = 4/30/2018	DATE -	REVISED -			ILLINOIS FED. AID PROJECT					
SCALE:						SHEET NO. OF SHEETS STA. TO STA.					

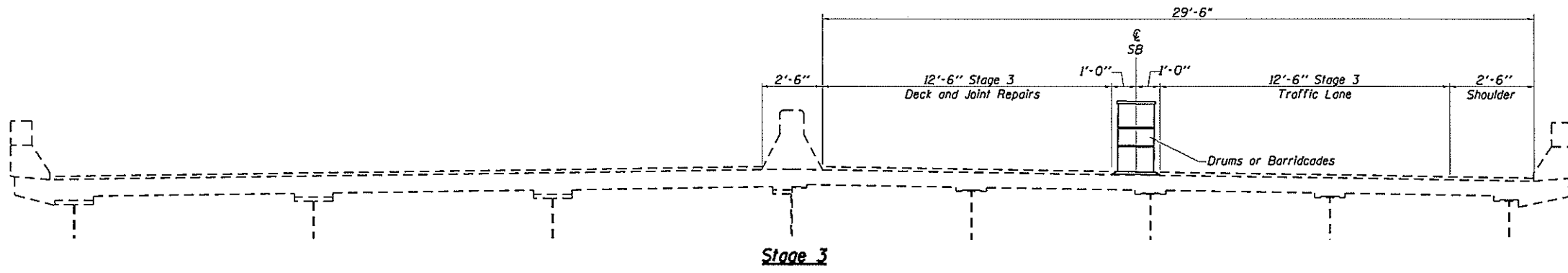
STATE OF ILLINOIS
DEPARTMENT OF TRANSPORTATION



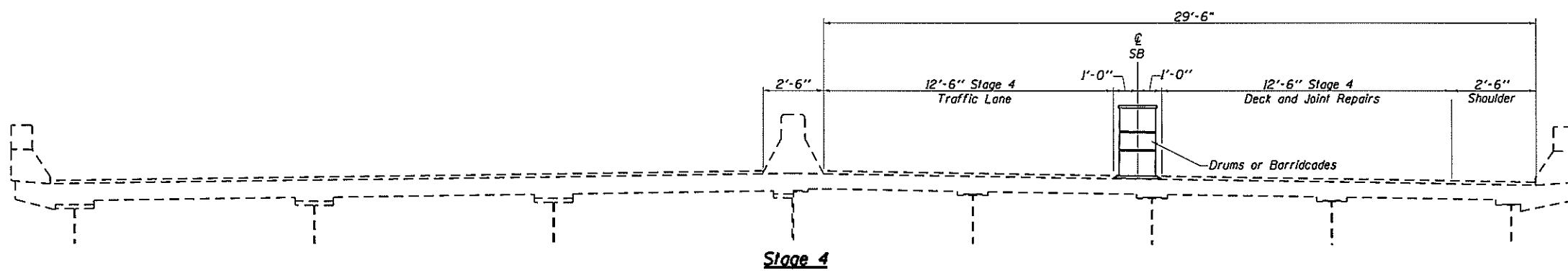
Stage 1



Stage 2



Stage 3



Stage 4

Northbound FAI-57

Southbound FAI-57

NOTES:

If the Contractor chooses to modify the suggested sequence of construction, the Contractor shall submit a revised sequence of construction and traffic control layout details for review and acceptance by the Engineer.

All sections looking South.

For additional traffic control details, refer to Traffic Control and Protection, Standard 701400 and Standard 701406.

STAGE CONSTRUCTION
DETAILS

FILE NAME =	USER NAME = porterc	DESIGNED -	REVISED -	STATE OF ILLINOIS DEPARTMENT OF TRANSPORTATION	STAGE CONSTRUCTION			F.A.I. RTE.	SECTION	COUNTY	TOTAL SHEETS	SHEET NO.
p:\IL084EGID\INTEG\Illinois.gov\PWIDOT\Documents\DOT Offices\District 9\Projects\78634\DRAWN\CAB\Sheets\0978634-Sheets.dgn		CHECKED -	REVISED -					57	09 DECK SEAL 2018-2	ALEXANDER	5	5
PLOT SCALE = 100.0000 / in.		DATE -	REVISED -					CONTRACT NO. 78634				
PLOT DATE = 4/30/2018								[ILLINOIS] FED. AID PROJECT				
				SCALE:	SHEET NO.	OF	SHEETS	STA.	TO STA.			