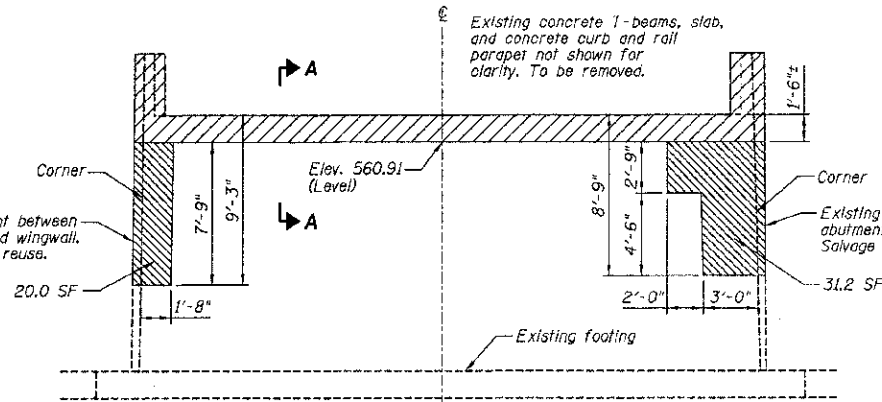
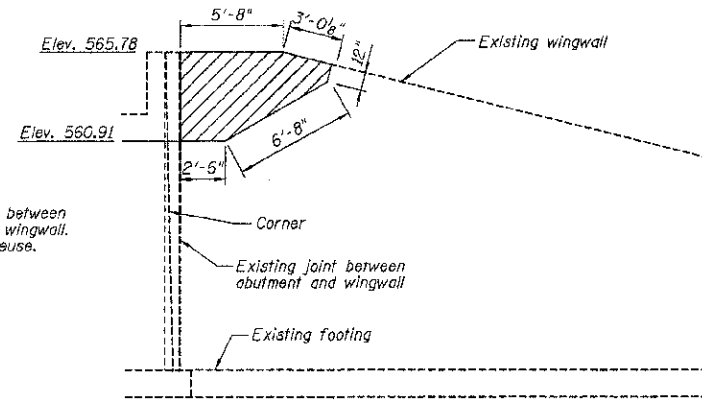


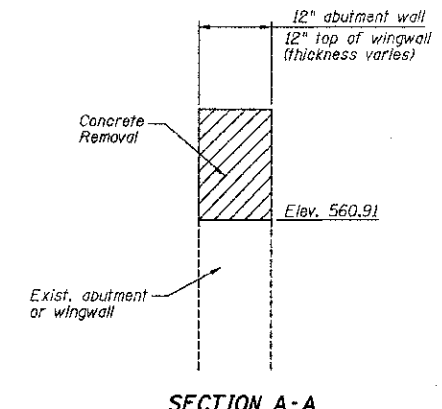
**CONCRETE REMOVAL  
ELEVATION - NORTHWEST WINGWALL**



**CONCRETE REMOVAL AND CONCRETE REPAIR  
ELEVATION - NORTH ABUTMENT  
(Looking at front face)**



**CONCRETE REMOVAL  
ELEVATION - NORTHEAST WINGWALL**

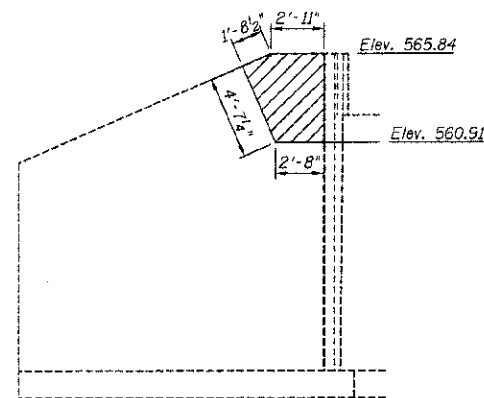


**SECTION A-A**

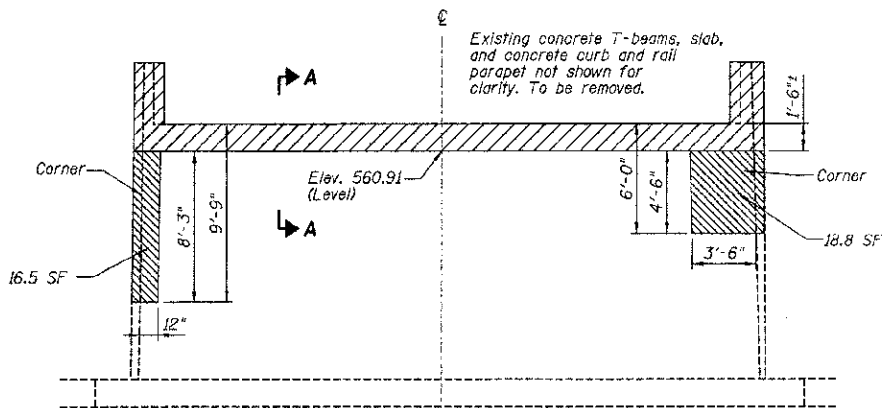
**LEGEND**  
 Concrete removal.  
 Structural Repair of Concrete (depth <math>\leq 5''</math>)

**NOTES**

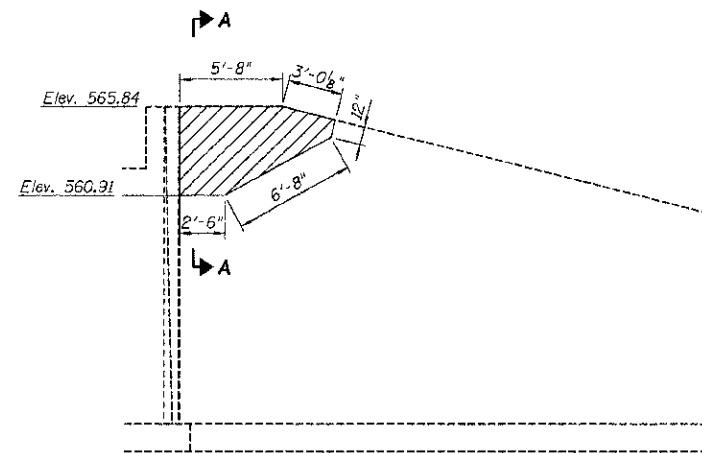
- Remove backfill as required for all concrete removal.
- During concrete removal, salvage all reinforcement (minimum 2'-0" from removal line) for re-use into new wall and cap.
- At structural repair areas, salvage all reinforcement for re-use.
- See Sheet 10 for new cap construction on top of back wall.
- See Sheet 11 for concrete and reinforcement for wingwall placement.
- Existing reinforcement shall be cleaned and incorporated into the new construction. Cost included with Concrete Removal.



**CONCRETE REMOVAL  
ELEVATION - SOUTHEAST WINGWALL**



**CONCRETE REMOVAL AND CONCRETE REPAIR  
ELEVATION - SOUTH ABUTMENT  
(Looking at front face)**



**CONCRETE REMOVAL  
ELEVATION - SOUTHWEST WINGWALL**

**BILL OF MATERIAL  
TWO ABUTMENTS  
(INCLUDING WINGWALLS)**

Item	Unit	Quantity
Concrete Removal	Cu Yd	8.6
Structural Repair of Concrete (Depth Equal to or less Than 5 Inches)	Sq Ft	86.5

**RHUTASEL and ASSOCIATES, INC.**  
 CONSULTING ENGINEERS & LAND SURVEYORS  
 CENTRALIA, ILLINOIS      FREEBURG, ILLINOIS  
 ILLINOIS DESIGN FIRM LICENSE NO. 164-000287

DESIGNED - WDL  
 DRAWN - JN  
 CHECKED - WDL  
 DATE - 05/29/2012

REVISED -  
 REVISED -  
 REVISED -  
 REVISED -

**STATE OF ILLINOIS  
DEPARTMENT OF TRANSPORTATION**

**ABUTMENT AND WINGWALL CONCRETE REMOVAL AND CONCRETE REPAIR  
STRUCTURE NO. 026-3001**

ROUTE	SECTION	COUNTY	TOTAL SHEETS	SHEET NO.
CH 28	12-00124-00-BR	FAYETTE	12	9
RAAI JOB NO. 51312			ILLINOIS FED. AID PROJECT	
			CONTRACT NO. 95691	