

**BENCHMARK:**

R.R. SPIKE IN POWER POLE  
 STA. 21+25.10, 34.4' RT.  
 ELEV. 652.41

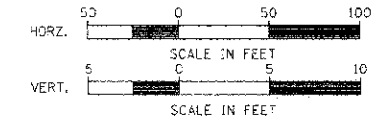
**EXISTING STRUCTURE NO. 058-3118**

SINGLE SPAN CONCRETE SLAB BRIDGE ON CLOSED CONCRETE ABUTMENTS WITH CONCRETE WINGWALLS AND CONCRETE SAFETY RAILING ±26'-0" BK.-BK. ABUTMENTS ±26'-3" C.-C. DECK

STA. 15+05.80 SPECIAL BRIDGE DESIGN PRECAST PRESTRESSED CONCRETE DECK BEAM BRIDGE, SINGLE SPAN AT 48'-6" 51'-4" BK.-BK. ABUTMENTS, 24'-0" F.-F. RAILING, NO SKEW.

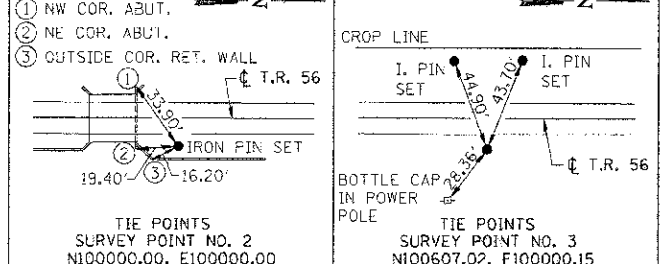
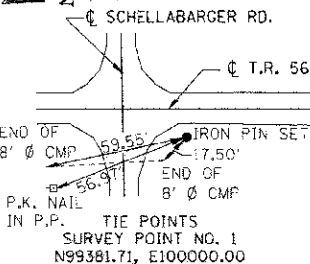
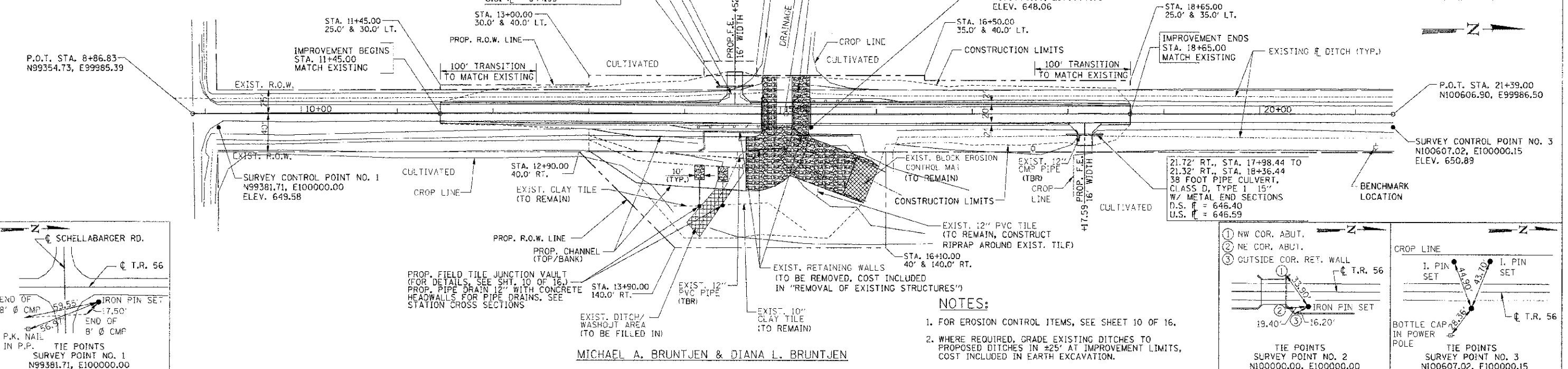
RTE.	SECTION	COUNTY	TOTAL SHEETS	SHEET NO.
T.R. 56	05-07161-00-3R	MACON	16	3
STA. 8+86.53 TO STA. 21+39.00				
FED. ROAD DIST. NO. ILLINOIS PROJECT: BR05-01151668				

CONTRACT NO. 95686



WILLIAM E. PENHALLEGON, BARBARA L. MCKAY, AND G. PATTON PENHALLEGON

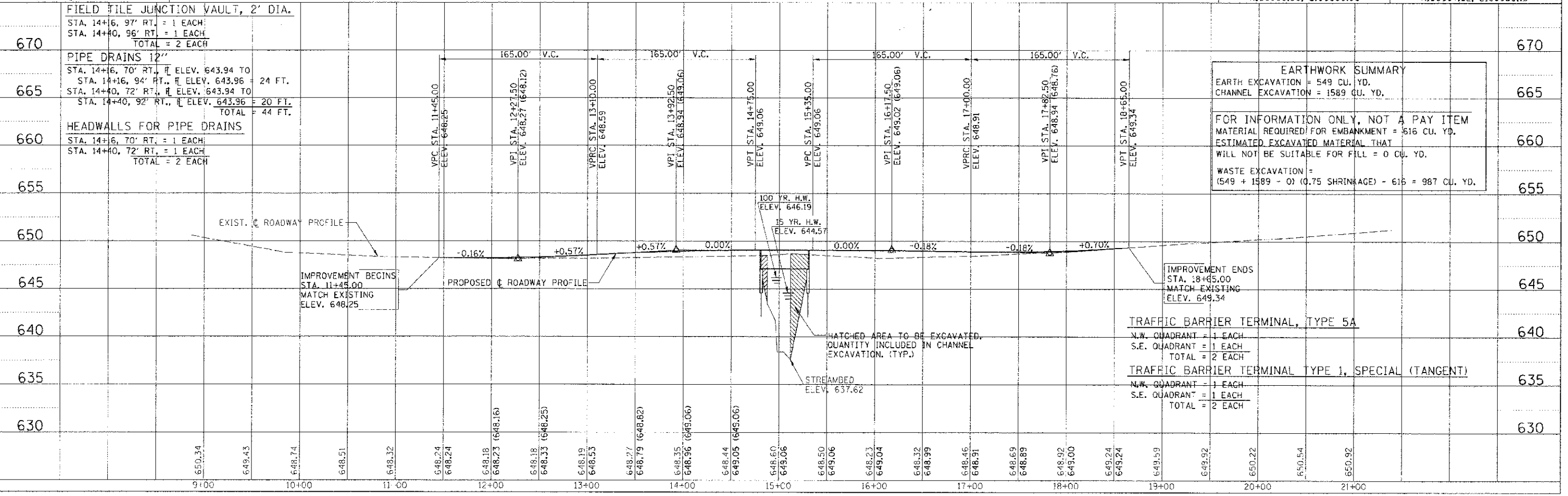
DATE	BY	REVISION



**NOTES:**

- FOR EROSION CONTROL ITEMS, SEE SHEET 10 OF 16.
- WHERE REQUIRED, GRADE EXISTING DITCHES TO PROPOSED DITCHES IN ±25' AT IMPROVEMENT LIMITS, COST INCLUDED IN EARTH EXCAVATION.

MICHAEL A. BRUNTJEN & DIANA L. BRUNTJEN



**EARTHWORK SUMMARY**

EARTH EXCAVATION = 549 CU. YD.
CHANNEL EXCAVATION = 1589 CU. YD.
FOR INFORMATION ONLY, NOT A PAY ITEM
MATERIAL REQUIRED FOR EMBANKMENT = 516 CU. YD.
ESTIMATED EXCAVATED MATERIAL THAT WILL NOT BE SUITABLE FOR FILL = 0 CU. YD.
WASTE EXCAVATION = (549 + 1589 - 0) (0.75 SHRINKAGE) - 615 = 987 CU. YD.

**TRAFFIC BARRIER TERMINAL, TYPE 5A**

N.W. QUADRANT = 1 EACH
S.E. QUADRANT = 1 EACH
TOTAL = 2 EACH

**TRAFFIC BARRIER TERMINAL TYPE 1, SPECIAL (TANGENT)**

N.W. QUADRANT = 1 EACH
S.E. QUADRANT = 1 EACH
TOTAL = 2 EACH

DATE	BY	REVISION