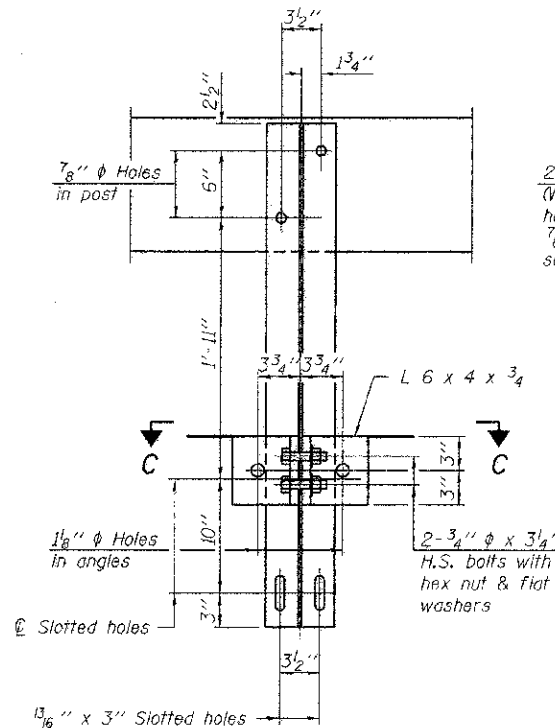
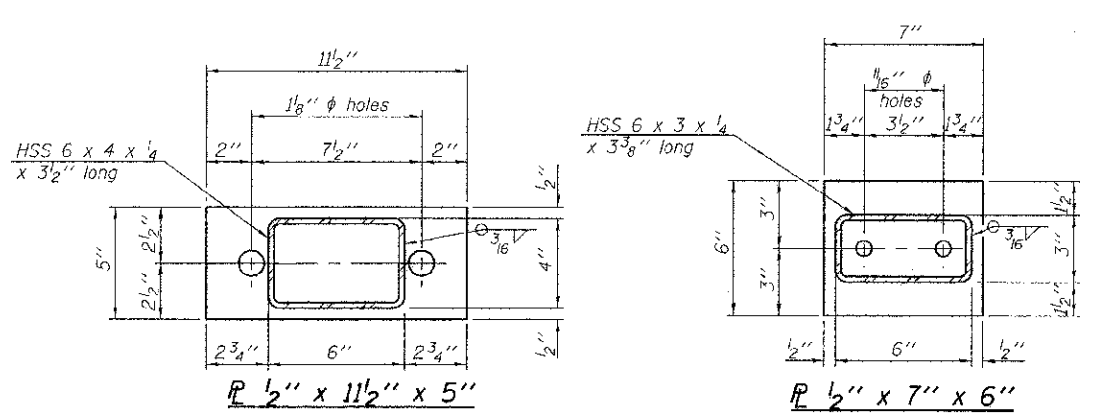
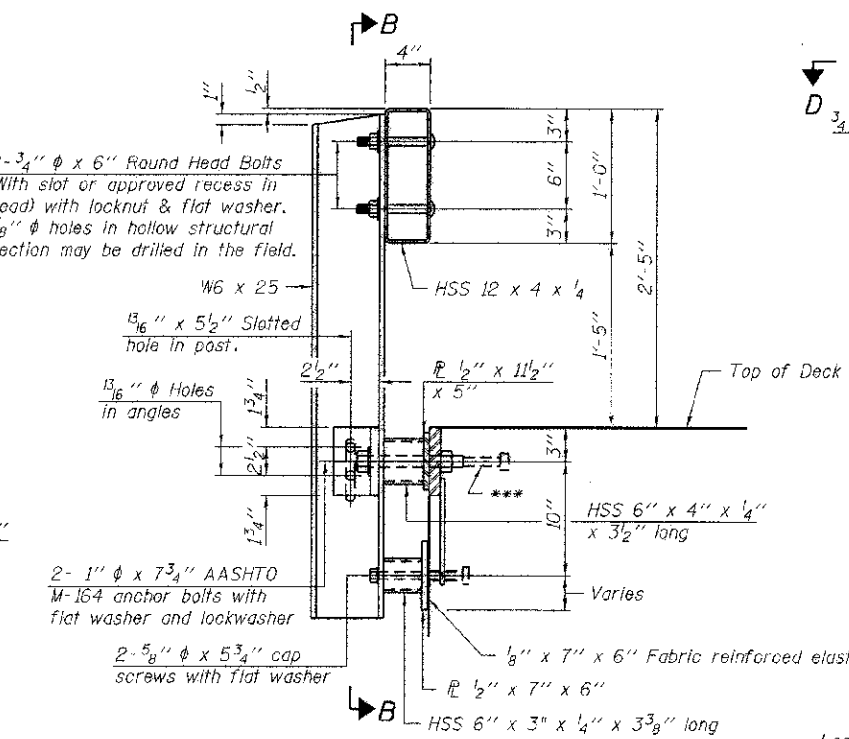


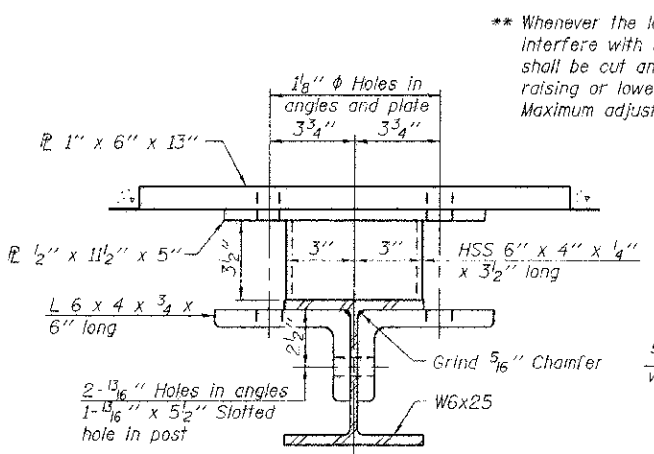
**VIEW A-A
ROUND HEAD BOLT**



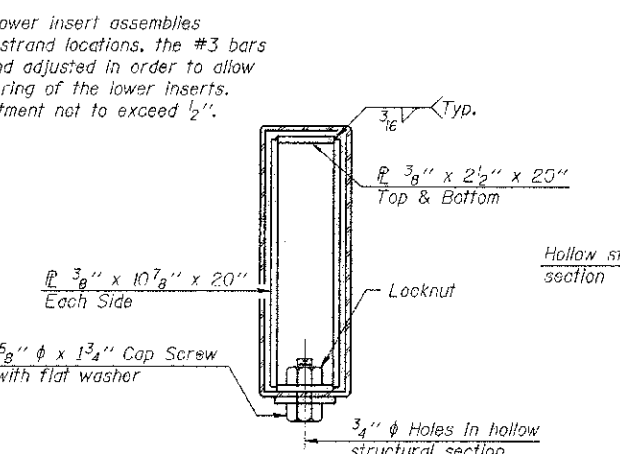
SECTION B-B



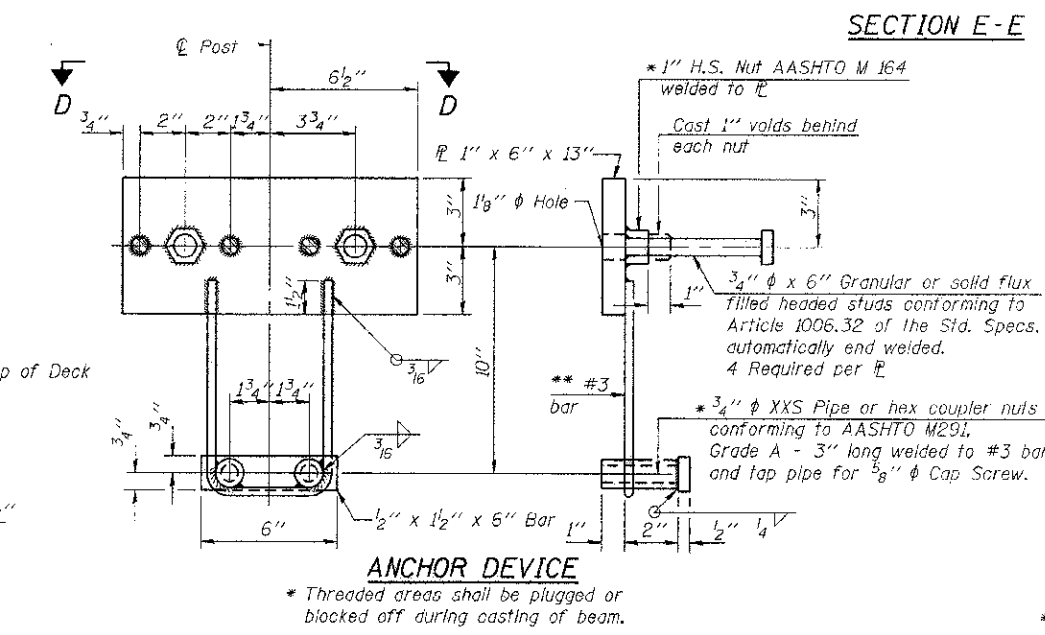
SECTION AT RAILING POST



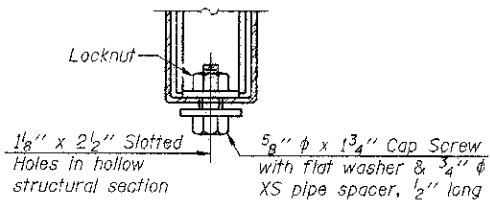
SECTION C-C



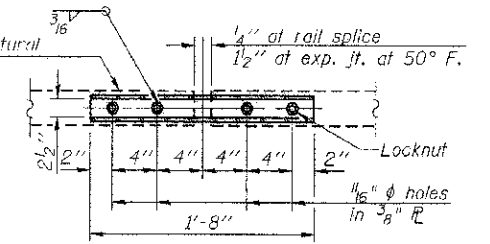
SECTIONS AT RAIL SPLICE



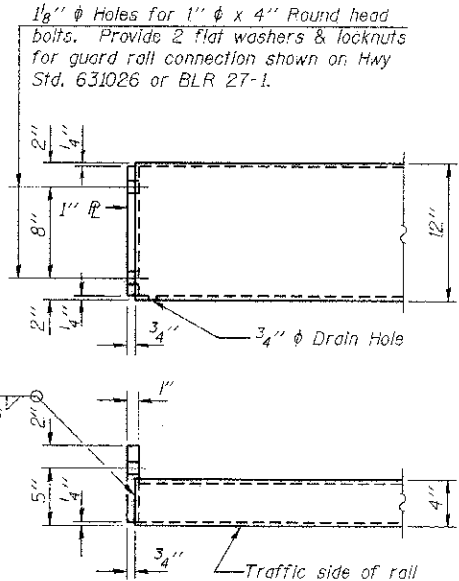
ANCHOR DEVICE



**RAIL SPLICE CONNECTION
AT EXPANSION JT.**

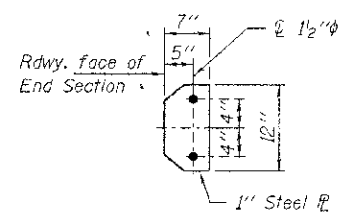


**PLAN-BOTT. SPLICE
TYPICAL**

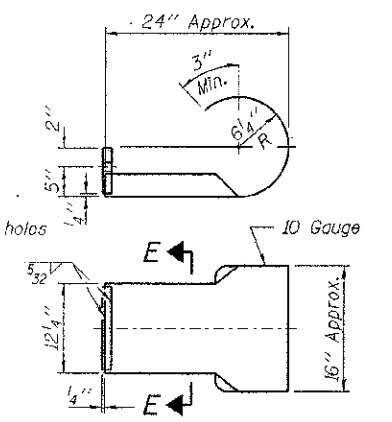


END OF RAIL DETAILS

Note: Cost of curled end sections shall be included with the Steel Railing. (4 Required)

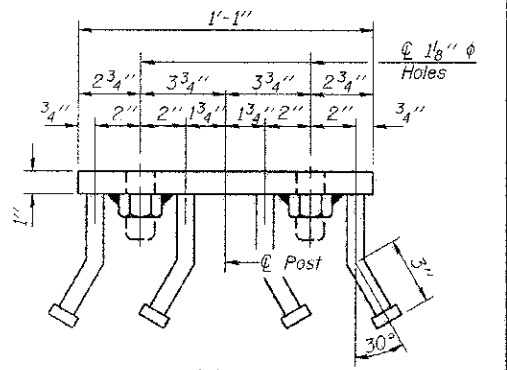


SECTION E-E



CURLED END SECTION DETAILS

Notes:
All field drilled holes shall be coated with an approved zinc rich paint before erection.
For multi-span bridges, sufficient 1/4\"/>



VIEW D-D

BILL OF MATERIAL

Item	Unit	Quantity
Steel Railing, Type S-1	Foot	99

R-23A 7-1-10 (10'-9\"/>

FILE NAME = 110293-ent-brd-bridge.dgn	USER NAME =	DESIGNED - D.W.T.	REVISED -
HAMPTON, LENZINI AND RENICK, INC.	PLDT SCALE =	CHECKED - A.S.L.	REVISED -
1100 SPRINGFIELD, ILLINOIS 62103	PLDT DATE = 4/4/2012	DRAWN - D.A.B.	REVISED -
ILLINOIS PROFESSIONAL DESIGN PRINT L3 / F / S E CORP. (848) 9893		CHECKED - S.W.M.	REVISED -

STATE OF ILLINOIS
JASPER COUNTY HIGHWAY DEPARTMENT

STEEL RAILING, TYPE S-1
STRUCTURE NO. 040-3264

C.H.	SECTION	COUNTY	TOTAL SHEETS	SHEET NO.
14	11-00118-00-BR	JASPER	12	8
				CONTRACT NO. 95685

SHEET NO. 5 OF 9 SHEETS

ILLINOIS FED. AID PROJECT