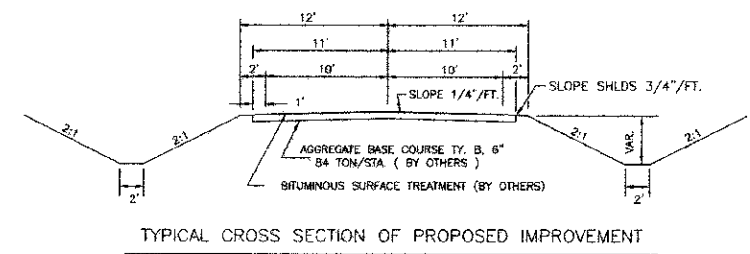
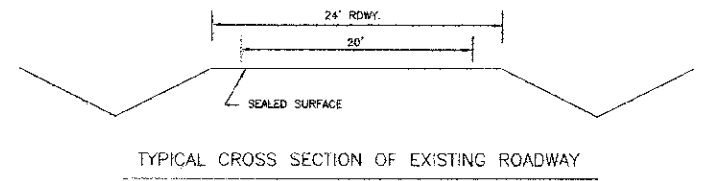


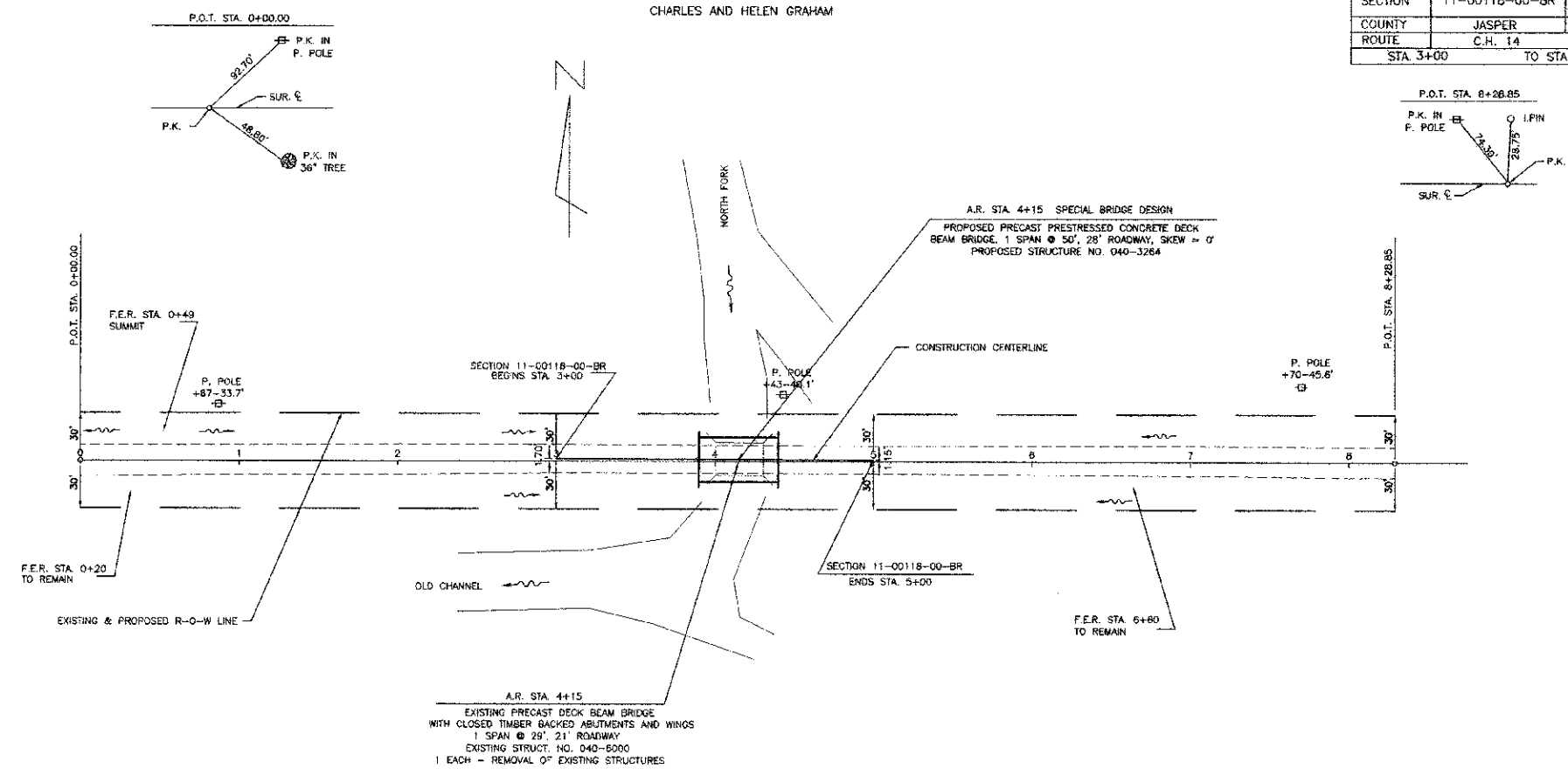
SECTION	11-00118-00-BR	TOTAL SHEETS	12	SHEET NO.	2
COUNTY	JASPER				
ROUTE	C.H. 14				
STA. 3+00		TO STA. 5+00			



TYPICAL CROSS SECTION OF PROPOSED IMPROVEMENT



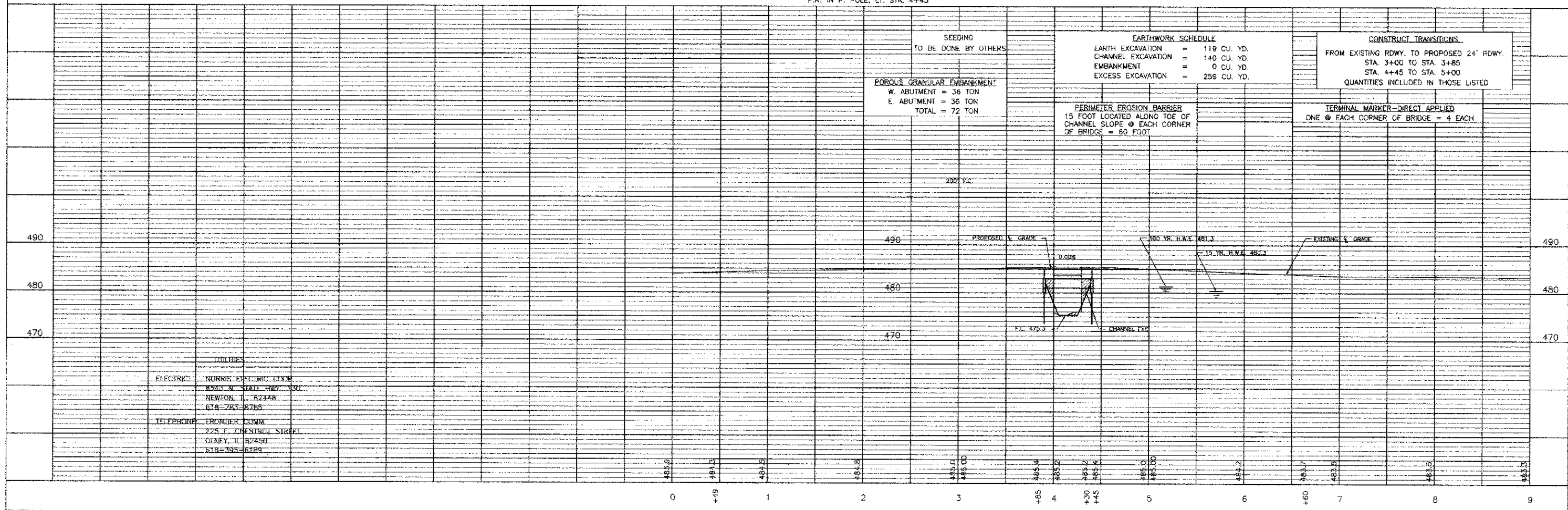
TYPICAL CROSS SECTION OF EXISTING ROADWAY



EXISTING PRECAST DECK BEAM BRIDGE WITH CLOSED TIMBER BACKED ABUTMENTS AND WINGS
1 SPAN @ 50' 21' ROADWAY
EXISTING STRUCT. NO. 040-6000
1 EACH - REMOVAL OF EXISTING STRUCTURES

BENCHMARK #1 ELEVATION 483.55
P.K. IN P. POLE, LT. STA. 4+43

MATHEW RUSSELL



UTILITIES
ELECTRIC: NORRIS ELECTRIC CO. 2593 N. STATE HWY. 130 NEWTON, IL 62448 618-783-8765
TELEPHONE: FRONIER COMM. 225 F. CHESTNUT STREET OLNEY, IL 62450 618-395-6189

CONNOR & CONNOR, Inc.
 CONSULTING ENGINEERS
 210 East Locust Street
 ROXBORO, ILLINOIS 62454
 Phone 618-544-8823
 Fax 618-544-3017
 Licensed Surveyors
 Licensed Engineers

DATE: 02/11/2010
 SCALE: 1" = 50'
 DRAWN BY: DUC
 PROJECT: 0-1541
 SHEET: OF