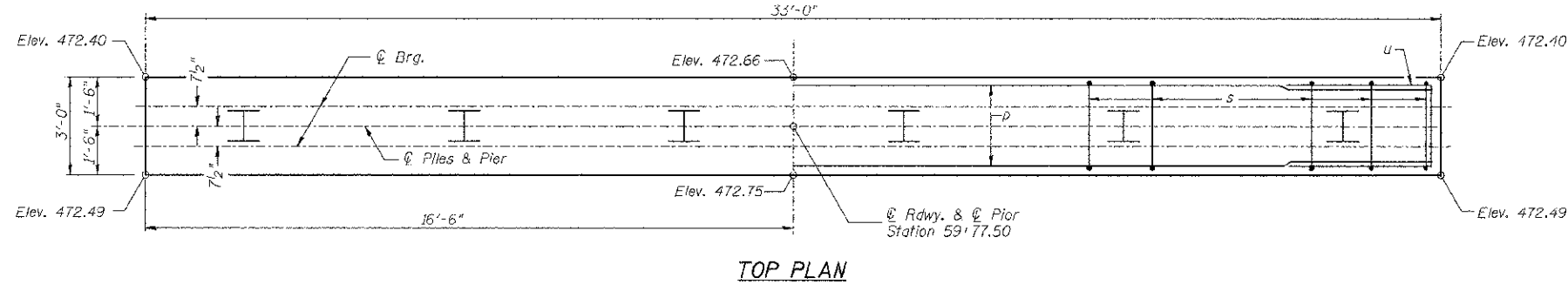
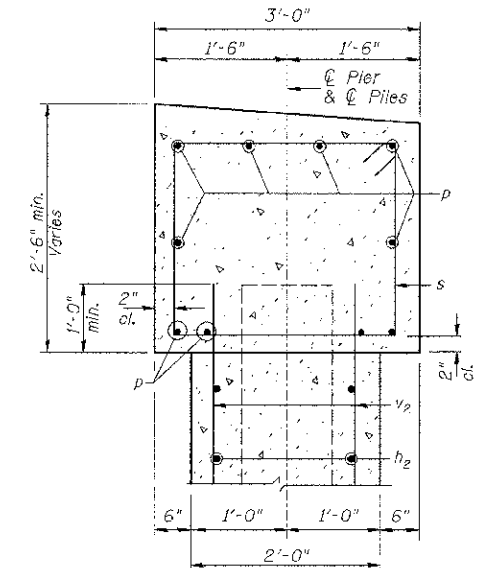


**NOTES:**

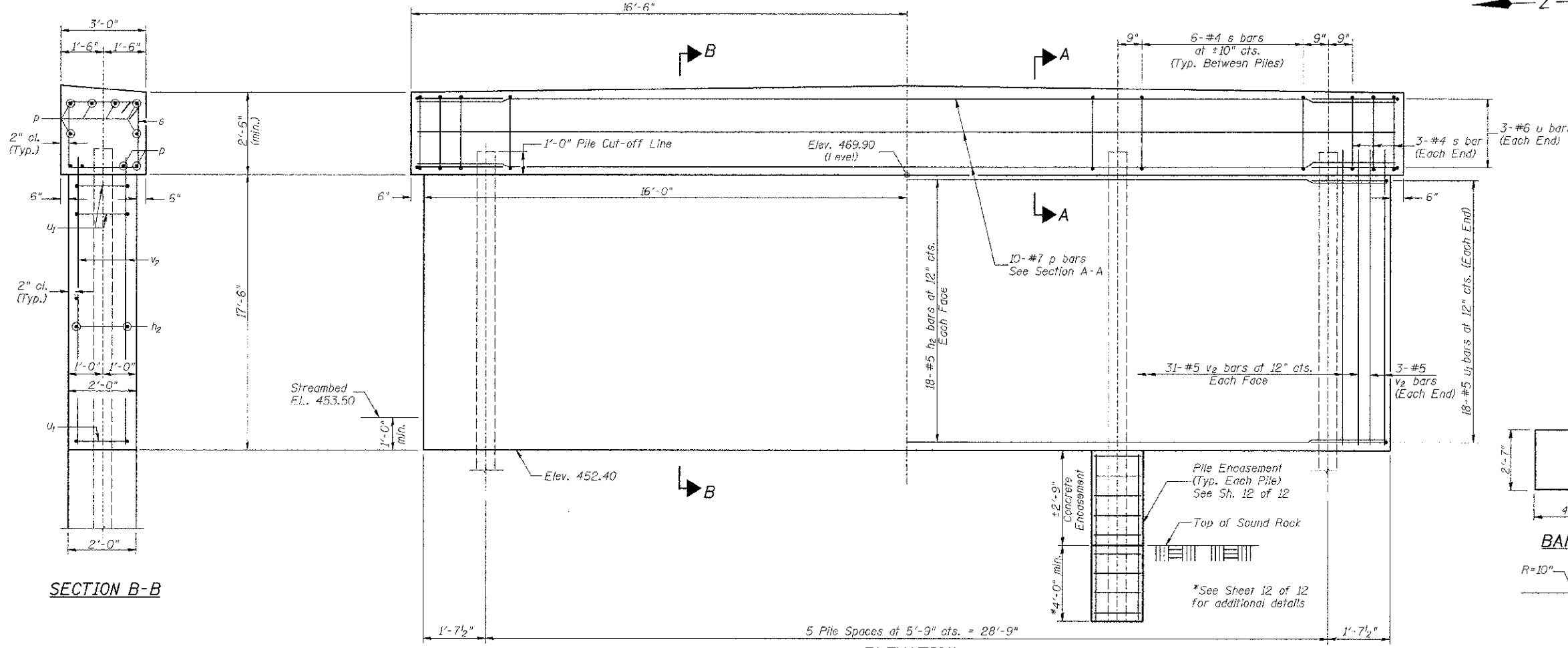
All edges shall have standard  $\frac{3}{4}$ " chamfer.  
The Pier Stem shall be constructed in a single continuous concrete pour.



**TOP PLAN**



**SECTION A-A**



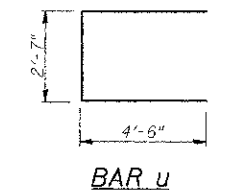
**ELEVATION**  
(Looking Upstation)

**SECTION B-B**

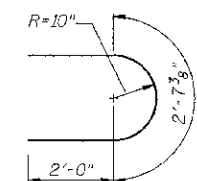
**PIER #1  
BILL OF MATERIAL**

BAR	NO.	SIZE	LENGTH	SHAPE
h <sub>2</sub>	36	#5	29'-8"	—
p	10	#7	32'-9"	—
s	36	#4	10'-5"	□
u	6	#6	11'-7"	□
u <sub>1</sub>	36	#5	6'-8"	□
v <sub>2</sub>	68	#5	18'-4"	—
Concrete Structures			CU YD	50.7
Reinforcement Bars			POUND	3,690
Cofferdam Excavation			CU YD	50
Furnishing Steel Piles HP10x42			FOOT	156
① Selling Piles in Rock			EACH	6
Concrete Encasement			CU YD	1.9
① Cofferdam (Type I) (Location-1)			EACH	1

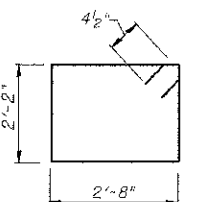
① See Special Provisions



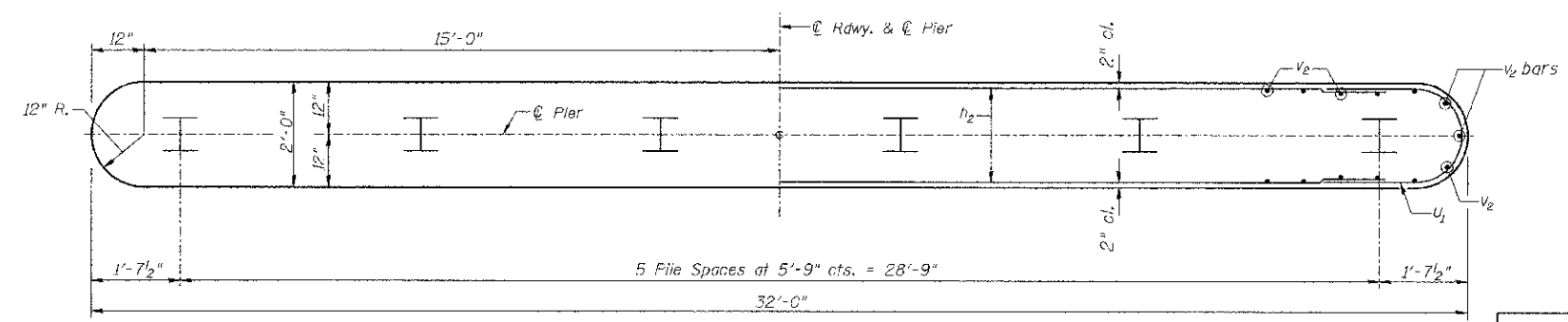
**BAR U**



**BAR U1**



**BAR S**



**FOOTING PLAN**

**PILE DATA**

Type & Size: Steel HP10x42  
Nominal Required Bearing: Set in Rock (335 kips)  
Factored Resistance Available: Set in Rock (184 kips)  
Est. Length: 26'  
No. Req'd.: 6

**PIER #1  
PIKE COUNTY  
SECTION 10-00085-00-BR  
C.H. 10 OVER BAY CREEK TRIBUTARY**

SHEET NO. 10 12 SHEETS	ROUTE NO.	SECTION	COUNTY	TOTAL SHEETS	SHEET NO.
	CH 10	10-00085-00-BR	PIKE	23	16
S.N. 075-3323			CONTRACT NO. 93582		
FED. ROAD DIST. NO. 7 ILLINOIS		FED. AID PROJECT BRS-0603(115)			